

Date of Action: 9.22.14	
Approved <input checked="" type="checkbox"/>	Denied <input type="checkbox"/>
By: <i>[Signature]</i>	

CITY COUNCIL ACTION MEMORANDUM

AM No. 14-37: Authorizing utility relocations for Mack Drive Extension/Clapp Street Improvements in the amount of \$89,125 for Matanuska Electric Association and \$58,558 for General Communications, Inc.

Originator: Public Works Director

Date: September 10, 2014

Agenda of: September 22, 2014

Route to:	Department Head	Signature	Date
X	Public Works Director	<i>[Signature]</i>	9/19/14
X	Finance Director	<i>[Signature]</i>	9-10-14
X	Deputy Administrator	<i>[Signature]</i>	9-10-14
X	City Clerk	<i>[Signature]</i>	9.10.14

Reviewed by Mayor Verne E. Rupright: *[Signature]*

Fiscal Impact: yes \$147,683 **Funds Available:** yes

Account name/number: S. Mack Dr. Reapp-State/160-4320-432-45-65

Attachments: MEA Exhibit A (20 pages)
GCI Exhibit A (11 pages)

Summary Statement: The attached exhibits outline the estimated cost to relocate portions of MEA and GCI utilities along the alignment for the Mack Drive Extension/Clapp Street improvement project. The utilities need to be relocated to allow for construction of the new road. The City's legislative grant for this project is proposed to fund the utility relocations in support of the Borough's Road Bond package that is funding the construction contract. The Borough has awarded the construction contract to Bristol Environmental Services in the amount of \$3.9 million. Their work will begin this fall with the clearing of trees and stumps. The earthwork is scheduled to begin next spring with the road to be paved and open for traffic by September 2015.

Staff Recommendation: Adopt AM No. 14-37.

EXHIBIT "A"
SUMMARY OF ESTIMATE FOR ADJUSTMENT OF FACILITIES REQUIRED BY ROAD CONSTRUCTION

The **MATANUSKA ELECTRIC ASSOCIATION**, estimate of work and materials required in connection with Project No.: **35403**,
Project Name: **MACK DRIVE EXTENSION/CLAPP ROAD IMPROVEMENTS**, Utility Work Order No. Reimbursable **103543**
Agreement No. **35403-2014-03**

	CITY PARTICIPATION	UTILITY COST NON-REIMBURS.	TOTALS
PART I. UTILITY WORK			
RIGHT OF WAY (Acquisition Only)	-	-	-
Preliminary Engineering	6,851		6,851
Preliminary Engineering Overhead	-		-
TOTAL PRELIMINARY ENGINEERING	6,851	-	6,851
Construction Engineering	6,851		6,851
Construction Engineering Overhead	-		-
TOTAL CONSTRUCTION ENGINEERING	6,851	-	6,851
Construction Labor	-		-
Materials & Supplies	20,064		20,064
Materials Handling Charges	-		-
Transportation & Equipment	-		-
Contract Construction	54,810		54,810
DOL Fee 1% of Contract Construction	548	-	548
Miscellaneous Expenses	-		-
Construction Subtotal	75,422	-	75,422
Construction Overhead	-		-
GROSS CONSTRUCTION COSTS	75,422	-	75,422
(Credits)			-
Betterments	-		-
Non-Reimbursable	-		-
TOTAL CREDITS	-	-	-
NET CONSTRUCTION COSTS	75,422	-	75,422
TOTAL UTILITY WORK	89,125	-	89,125

PART II. BOROUGH WORK FOR UTILITY			
Preliminary Engineering @ 5%			-
Contract Construction			-
Construction Engineering @ 15%			-
TOTAL BOROUGH WORK FOR UTILITY	-	-	-
TOTAL ESTIMATED RELOCATION COSTS (Parts I & II)	89,125	-	89,125

UTILITY CONCURRENCE, BY: _____ SUBMITTED BY: _____

DATE: _____, 20____

TITLE: _____

Billing Format

1. Costs associated with Matanuska Electric Association (MEA) Project Work Order #103543 are reimbursable subject to the terms and conditions of this agreement.
2. Billings shall include proper supporting documentation, which shall include but not limited to the following:
 - a. Journal entry reports or timesheets detailing the employee's name, pay rate, hours charged and total costs.
 - b. Invoices for contract services including unit prices or hours and costs billed.
 - c. Material issue/return tickets verifying actual materials installed or returned.
 - d. Receipts or invoices for miscellaneous expenses with cost breakdown by item.
3. The unit estimate provided by MEA included company overheads loaded in the unit costs. DOL fees were applied to Contract Construction.
4. NOTICE OF WORK
Before work commences, the Company shall file a *Notice of Work* (NOW) with the Alaska Department of Labor and Workforce Development (DOL/WD). This requirement does not apply if the *total reimbursable* portion of the Agreement is less than \$2,000.

FILING FEE

Per AS 36.05, the DOL/WD will assess a 1% filing fee with the NOW. The fee is calculated as 1% of the *reimbursable contract construction* amount and is capped at \$5,000. The filing fee is not required when the *total reimbursable agreement* amount is less than \$25,000.

Per WHPL #198 (October 15, 2004) the Company must provide DOL/WD a sworn affidavit that their company labor wages and benefits meet or exceed the total prevailing wage requirements for the specific classification or worker listed in the applicable Laborers' and Mechanics' Minimum Rates of Pay pamphlet.

COMPLETION OF WORK

Upon completion of construction the Company will re-calculate the DOL/WD filing fee using the actual *reimbursable contract construction* amount. With this information, the Company shall file a *notice of completion* with DOL/WD and will either pay additional fees owed or receive a refund, as appropriate.

**MATANUSKA ELECTRIC ASSOCIATION (MEA)
MACK DRIVE EXTENSION/CLAPP STREET IMPROVEMENTS
SUMMARY of ESTIMATED COSTS
MEA WO 103543**

		TOTAL
PRELIMINARY ENGINEERING		
Preliminary Engineering Labor	= \$	6,851.21
Preliminary Engineering Overhead	Unit costs include OH = \$	-
<hr/>		
TOTAL PRELIMINARY ENGINEERING	\$	6,851.21
 CONSTRUCTION ENGINEERING		
Construction Engineering Labor	Portion covered under PO# = \$	6,851.21
Construction Engineering Overhead	Unit costs include OH = \$	-
<hr/>		
TOTAL CONSTRUCTION ENGINEERING	\$	6,851.21
 CONSTRUCTION COSTS		
Construction Labor	= \$	-
Materials & Supplies	= \$	20,064.33
Materials Handling Charges	Unit costs include OH = \$	-
Transportation & Equipment	= \$	-
Contract Construction (Electrical)	527.50 Hrs. = \$	54,809.69
DOL Fee @ 1% of Contract Construction	\$ 54,809.69 x 1.00 % = \$	548.10
Misc. Expenses	= \$	-
Construction Overhead	Unit costs include OH = \$	-
<hr/>		
GROSS CONSTRUCTION COSTS	\$	75,422.12
 TOTAL BETTERMENTS	 \$	 -
 NET CONSTRUCTION COSTS	 \$	 75,422.12
<hr/> TOTAL ESTIMATED RELOCATION COST	<hr/> \$	<hr/> 89,124.54

MEA WORK ORDER NO. 103543
MACK DRIVE EXTENSION/CLAPP STREET IMPROVEMENTS
MEA EXHIBIT "A" - RELOCATION LABOR & MATERIAL COST & MANHOUR ESTIMATE-NEW INSTALLATION

ADJUSTMENT	ITEM NO.	PAY ITEM	QTY	UNIT LABOR	TOTAL LABOR	UNIT MATERIAL	TOTAL MATERIALS	TOTAL COST	HOURS
HI	40-4	POLE, 40-4	1	\$ 977.12	\$ 977.12	\$ 495.95	\$ 495.95	\$ 1,473.07	8.6
HI	C1-1	7.2/12.5 KV 3Ø CROSSARM DOUBLE SUPPORT	1	\$ 610.55	\$ 610.55	\$ 177.05	\$ 177.05	\$ 787.60	5.0
HI	C8-1UB	7.2/12.5 KV 3Ø CROSSARM DOUBLE DEADEND UB	1	\$ 1,911.12	\$ 1,911.12	\$ 701.55	\$ 701.55	\$ 2,612.67	13.0
HI	C8A	7.2/12.5 KV 3Ø CROSSARM HUGHES DOUBLE DEADEND	1	\$ 1,911.12	\$ 1,911.12	\$ 1,200.36	\$ 1,200.36	\$ 3,111.48	13.0
HI	M5-1	HOT LINE CLAMP	4	\$ 122.15	\$ 488.60	\$ 24.23	\$ 96.92	\$ 585.52	3.1
N	#1/0 AL JCN 15	CABLE, UG, 15 KV 1/0 AL JCN	285	\$ 2.07	\$ 589.95	\$ 2.59	\$ 738.15	\$ 1,328.10	3.8
N	#1/0 ACSR	CONDUCTOR, 1/0 ACSR, "RAVEN"	2918	\$ 2.07	\$ 6,040.26	\$ 0.29	\$ 846.22	\$ 6,886.48	42.0
N	#2/0 URD	CABLE, SECONDARY UNDERGROUND, 2/0-1-2/0 AWG ALUM	160	\$ 2.07	\$ 331.20	\$ 1.31	\$ 209.60	\$ 540.80	2.7
N	#350 URD	CABLE, SECONDARY UNDERGROUND, 350 MCM URD	55	\$ 2.26	\$ 124.30	\$ 2.76	\$ 151.85	\$ 276.15	1.1
N	#397.5 AAC	CONDUCTOR, 397.5 AAC, "CANNA"	1000	\$ 2.07	\$ 2,070.00	\$ 0.80	\$ 800.00	\$ 2,870.00	20.4
N	#4/0 TPX	CONDUCTOR, OH, 4/0 TRIPLEX	75	\$ 2.26	\$ 169.50	\$ 1.67	\$ 125.25	\$ 294.75	1.4
N	35-5	POLE, 35-5	2	\$ 751.63	\$ 1,503.26	\$ 330.60	\$ 661.20	\$ 2,164.46	12.0
N	40-4	POLE, 40-4	7	\$ 751.63	\$ 5,261.41	\$ 495.95	\$ 3,471.65	\$ 8,733.06	46.2
N	45-4	POLE, 45-4	2	\$ 751.63	\$ 1,503.26	\$ 601.05	\$ 1,202.10	\$ 2,705.36	13.2
N	50-4	POLE, 50-4	1	\$ 845.57	\$ 845.57	\$ 663.88	\$ 663.88	\$ 1,509.45	8.4
N	A7-1	7.2/12.5 KV 1Ø CROSSARM DEADEND	2	\$ 375.81	\$ 751.62	\$ 209.74	\$ 419.48	\$ 1,171.10	7.7
N	A7X-3	7.2/12.5 KV 1Ø CROSSARM OFF EXISTING 3Ø DEADEND	1	\$ 328.83	\$ 328.83	\$ 151.13	\$ 151.13	\$ 479.96	3.8
N	A8	7.2/12.5 KV 1Ø CROSSARM DOUBLE DEADEND	1	\$ 375.81	\$ 375.81	\$ 302.60	\$ 302.60	\$ 678.41	4.8
N	A9	7.2/12.5 KV 1Ø CROSSARM DOUBLE SUPPORT	1	\$ 281.86	\$ 281.86	\$ 143.38	\$ 143.38	\$ 425.24	3.0
N	A9-1	7.2/12.5 KV 1Ø CROSSARM SINGLE SUPPORT	4	\$ 244.28	\$ 977.12	\$ 66.75	\$ 267.00	\$ 1,244.12	9.6
N	C7-2	7.2/12.5 KV 3Ø CROSSARM CONST, HEAVY DUTY HORZ DEADEND ASSY	2	\$ 563.71	\$ 1,127.42	\$ 638.99	\$ 1,277.98	\$ 2,405.40	21.6
N	C9-3	7.2/12.5 KV 3Ø CROSSARM CONST, HEAVY DUTY SINGLE SUPPORT	1	\$ 281.86	\$ 281.86	\$ 162.37	\$ 162.37	\$ 444.23	3.6
N	E1-3	SINGLE DOWN GUY, SMALL, THROUGH BOLT TYPE	10	\$ 187.90	\$ 1,879.00	\$ 48.09	\$ 480.90	\$ 2,359.90	9.6
N	E2-3	SINGLE OVERHEAD GUY, SMALL	1	\$ 244.28	\$ 244.28	\$ 40.34	\$ 40.34	\$ 284.62	2.4
N	E9-4	TRIPLE DOWN GUY, LARGE	1	\$ 319.44	\$ 319.44	\$ 213.97	\$ 213.97	\$ 533.41	3.2
N	F1-3P	ANCHOR ASSEMBLY, PLATE TYPE, 20 IN, 10,000 LB	8	\$ 375.81	\$ 3,006.48	\$ 48.83	\$ 390.64	\$ 3,397.12	28.8
N	F1-4P	ANCHOR ASSEMBLY, PLATE TYPE, 24 IN, 12,000 LB	3	\$ 375.81	\$ 1,127.43	\$ 79.49	\$ 238.47	\$ 1,365.90	10.8
N	G105C-10	7.2/12.5 KV 1Ø TRANSFORMER, CONV., 10KVA	1	\$ 939.53	\$ 939.53	\$ 908.76	\$ 908.76	\$ 1,848.29	6.6
N	HDPE2	CONDUIT, HDPE, 2"	220	\$ 3.75	\$ 825.00	\$ 1.08	\$ 237.60	\$ 1,062.60	5.3
N	HDPE4	CONDUIT, HDPE, 4"	10	\$ 4.70	\$ 47.00	\$ 3.59	\$ 35.90	\$ 82.90	0.6
N	J-10	SECONDARY ATTACH, CLEVIS	1	\$ 56.37	\$ 56.37	\$ 10.79	\$ 10.79	\$ 67.16	0.5
N	M2-11	GROUNDING ASSEMBLY, ROD TYPE	2	\$ 187.90	\$ 375.80	\$ 44.34	\$ 88.68	\$ 464.48	2.4
N	M2-11B	GROUNDING ASSEMBLY, ROD TYPE	7	\$ 187.90	\$ 1,315.30	\$ 44.34	\$ 310.38	\$ 1,625.68	8.4
N	M5-9	FUSED CUTOUT, CROSSARM MOUNT	1	\$ 187.90	\$ 187.90	\$ 177.04	\$ 177.04	\$ 364.94	2.2
N	PVC2SS	SHORT SWEEP ELBOW, 2" PVC	4	\$ 140.93	\$ 563.72	\$ 6.92	\$ 27.68	\$ 591.40	2.4
N	R2-30	CLEARING, FT, FULL WIDTH	135	\$ 5.68	\$ 766.80	\$ -	\$ -	\$ 766.80	0.0
N	UG7D-15	7.2/12.5 KV 1Ø XFMR, DE, 15 KVA	1	\$ 1,127.44	\$ 1,127.44	\$ 1,380.03	\$ 1,380.03	\$ 2,507.47	7.2
N	UK5	SECONDARY PEDESTAL, FIBERGLASS	1	\$ 281.86	\$ 281.86	\$ 135.09	\$ 135.09	\$ 416.95	2.0
N	UM12P	UNDERGROUND EQUIPMENT SNOW MARKER WAND	2	\$ 5.63	\$ 11.26	\$ 16.72	\$ 33.44	\$ 44.70	1.2
N	UM1-7T	VAULT, 1Ø TRANSFORMER	1	\$ 751.63	\$ 751.63	\$ 322.12	\$ 322.12	\$ 1,073.75	5.4
N	UM2	7.2 KV PRIMARY UG, 1Ø RISER ASSY	1	\$ 1,503.24	\$ 1,503.24	\$ 571.38	\$ 571.38	\$ 2,074.62	10.8
N	UM5/2	SECONDARY RISER ASSY, 2"	1	\$ 375.81	\$ 375.81	\$ 74.85	\$ 74.85	\$ 450.66	3.6
N	UM5/4	SECONDARY RISER ASSY, 4"	1	\$ 375.81	\$ 375.81	\$ 120.60	\$ 120.60	\$ 496.41	3.6
N	UR2-S24	TRENCHING & BACKFILLING, 24" DEEP	110	\$ 6.58	\$ 723.80	\$ -	\$ -	\$ 723.80	4.6
N	UR2-S48	TRENCHING & BACKFILLING, 48" DEEP	215	\$ 8.08	\$ 1,737.20	\$ -	\$ -	\$ 1,737.20	12.4
NX	MTR1	METER, 1Ø	1	\$ 93.96	\$ 93.96	\$ -	\$ -	\$ 93.96	0.6
TOTAL NEW INSTALLATION					\$ 47,097.80	\$ 20,064.33	\$ 59,083.35	\$ 59,083.35	382.6

MEA WORK ORDER NO. 103543
MACK DRIVE EXTENSION/CLAPP STREET IMPROVEMENTS
MEA EXHIBIT "A" - RELOCATION LABOR & MATERIAL COST & MANHOUR ESTIMATE-NEW INSTALLATION

ADJUSTMENT	ITEM NO.	PAY ITEM	QTY	UNIT LABOR	TOTAL LABOR	UNIT MATERIAL	TOTAL MATERIALS	TOTAL COST	HOURS
HR	#397.5 AAC	CONDUCTOR, 397.5 AAC, "CANNA"	392	\$ 1.07	\$ 419.44	\$ -	\$ -	\$ 419.44	4.2
HR	C9-1	7.2/12.5 KV 3Ø SINGLE CROSSARM	1	\$ 146.57	\$ 146.57	\$ -	\$ -	\$ 146.57	1.9
HR	C9-3	7.2/12.5 KV 3Ø HEAVY SINGLE CROSSARM	1	\$ 146.57	\$ 146.57	\$ -	\$ -	\$ 146.57	1.9
HR	M5-1	HOT LINE CLAMP	4	\$ 48.86	\$ 195.44	\$ -	\$ -	\$ 195.44	1.2
R	#1/0 ACSR	CONDUCTOR, BARE OH ACSR, 1/0 AWG, "RAVEN"	252	\$ 0.83	\$ 209.16	\$ -	\$ -	\$ 209.16	1.5
R	#1/0 TPX	CONDUCTOR, OH 1/0 TRIPLEX	154	\$ 0.75	\$ 115.50	\$ -	\$ -	\$ 115.50	1.2
R	#2/0 URD	CABLE, SECONDARY UNDERGROUND, 2/0-1-2/0 AWG ALUM	70	\$ 0.83	\$ 58.10	\$ -	\$ -	\$ 58.10	0.5
R	#4 ACSR	CONDUCTOR, #4 ACSR, "SWANATE"	3020	\$ 0.45	\$ 1,359.00	\$ -	\$ -	\$ 1,359.00	15.9
R	25-7	POLE, 25-7	1	\$ 225.48	\$ 225.48	\$ -	\$ -	\$ 225.48	2.4
R	30-6	POLE, 30-6	1	\$ 263.07	\$ 263.07	\$ -	\$ -	\$ 263.07	2.4
R	40-2	POLE, 40-2	1	\$ 300.65	\$ 300.65	\$ -	\$ -	\$ 300.65	2.6
R	40-4	POLE, 40-4	4	\$ 300.65	\$ 1,202.60	\$ -	\$ -	\$ 1,202.60	10.6
R	45-4	POLE, 45-4	1	\$ 300.65	\$ 300.65	\$ -	\$ -	\$ 300.65	2.6
R	A8	7.2/12.5 KV 1Ø DOUBLE DEADEND	1	\$ 150.32	\$ 150.32	\$ -	\$ -	\$ 150.32	1.9
R	A9	7.2/12.5 KV 1Ø CROSSARM DOUBLE SUPPORT	2	\$ 112.74	\$ 225.48	\$ -	\$ -	\$ 225.48	2.4
R	A9-1	7.2/12.5 KV 1Ø CROSSARM SINGLE SUPPORT	1	\$ 97.71	\$ 97.71	\$ -	\$ -	\$ 97.71	1.0
R	C7-2	7.2/12.5 KV 3Ø CROSSARM CONST, HEAVY DUTY HORZ DEADEND ASSY	1	\$ 225.48	\$ 225.48	\$ -	\$ -	\$ 225.48	4.3
R	E1-3	SINGLE DOWN GUY, SMALL, THROUGH BOLT TYPE	2	\$ 75.16	\$ 150.32	\$ -	\$ -	\$ 150.32	0.8
R	E9-4	TRIPLE DOWN GUY, LARGE	1	\$ 127.77	\$ 127.77	\$ -	\$ -	\$ 127.77	1.3
R	F1-4P	ANCHOR ASSEMBLY, PLATE TYPE, 24 IN, 12,000 LB	4	\$ 150.32	\$ 601.28	\$ -	\$ -	\$ 601.28	5.8
R	G105C-10	7.2/12.5 KV 1Ø TRANSFORMER, CONV., 10KVA	1	\$ 375.81	\$ 375.81	\$ -	\$ -	\$ 375.81	2.6
R	J5	SECONDARY ATTACHMENT, SPOOL	1	\$ 22.55	\$ 22.55	\$ -	\$ -	\$ 22.55	0.2
R	J6	SECONDARY ATTACHMENT, SWING CLEVIS	1	\$ 22.55	\$ 22.55	\$ -	\$ -	\$ 22.55	0.2
R	M2-11	GROUNDING ASSEMBLY, ROD TYPE, VERTICAL CONSTR	2	\$ 75.16	\$ 150.32	\$ -	\$ -	\$ 150.32	1.0
R	M2-11B	GROUNDING ASSEMBLY, ROD TYPE, HORIZONTAL CONSTR	1	\$ 75.16	\$ 75.16	\$ -	\$ -	\$ 75.16	0.5
R	M5-9	FUSED CUTOUT ON CROSSARM BRACKET	1	\$ 75.16	\$ 75.16	\$ -	\$ -	\$ 75.16	0.9
R	UM5/2	SECONDARY RISER, 2"	1	\$ 150.32	\$ 150.32	\$ -	\$ -	\$ 150.32	1.4
R	VA7X	14.4 KV 1Ø OFF EXIST 1Ø DE	1	\$ 93.95	\$ 93.95	\$ -	\$ -	\$ 93.95	1.4
R	VC7-2	25 KV 3Ø HEAVY CROSS ARM, DEADEND	1	\$ 225.48	\$ 225.48	\$ -	\$ -	\$ 225.48	4.3
R	MTR1	METER, 1Ø	1	\$ -	\$ -	\$ -	\$ -	\$ -	0.0
TOTAL NEW INSTALLATION & RETIREMENT					\$ 7,711.89	\$ -	\$ -	\$ 7,711.89	78.9
TOTAL NEW INSTALLATION & RETIREMENT					\$ 54,809.69	\$ 20,064.33	\$ 66,795.24	461.5	

Matanuska Electric Association, Inc.

Work Order Estimated Cost Report

Estimate: 103543 Name: Wasilla City Of Work Order: 103543 Date: Aug 29, 2014
 Est Basis: 3 Palmer Unit Price Pole Number: K69A-3A thru -9 Efficiency Multiplier: 1.2
 Comment: Travel Adder Percentage: None

ADJ	UNIT	DESCRIPTION	QTY	LABOR	MATERIALS	HRS
HI	40-4	Pole, 40-4	1	977.12	495.95	8.6
HI	C1-1	12.5 kV 3Ø Double Support	1	610.55	177.05	5.0
HI	C8-1UB	12.5 kV 3Ø Double Deadend UB	1	1,911.12	701.55	13.0
HI	C8A	12.5 kV 3Ø Hughes Dbl Deadend	1	1,911.12	1,200.36	13.0
HI	M5-1	Hot Line Clamp	4	488.60	96.92	3.1
HR	#397.5AAC	Conductor, 397.5 AAC, "Canna"	392	419.44	0.00	4.2
HR	C9-1	12.5 kV 3Ø Single Crossarm	1	146.57	0.00	1.9
HR	C9-3	12.5 kV 3Ø Hvy Single Crossarm	1	146.57	0.00	1.9
HR	M5-1	Hot Line Clamp	4	195.44	0.00	1.2
N	#1/0 AL JCN 15	Cable, UG, 15 kV 1/0 Al JCN	285	589.95	738.15	3.8
N	#1/0ACSR	Conductor, 1/0 ACSR, "Raven"	2918	6,040.26	846.22	42.0
N	#2/0URD	Cable, UG Sec, 2/0 URD	160	331.20	209.60	2.7
N	#350URD	Cable, UG Sec, 350 MCM URD	55	124.30	151.80	1.1
N	#397.5AAC	Conductor, 397.5 AAC, "Canna"	1000	2,070.00	800.00	20.4
N	#4/0TPX	Conductor, OH, 4/0 Triplex	75	169.50	125.25	1.4
N	35-5	Pole, 35-5	2	1,503.26	661.12	12.0
N	40-4	Pole, 40-4	7	5,261.41	3,471.65	46.2
N	45-4	Pole, 45-4	2	1,503.26	1,202.10	13.2
N	50-4	Pole, 50-4	1	845.57	663.88	8.4
N	A7-1	7.2 kV 1Ø Xarm Deadend	2	751.62	419.48	7.7
N	A7X-3	7.2 kV 1Ø Off Exist 3Ø DE	1	328.83	151.13	3.8
N	A8	7.2 kV 1Ø Double Deadend	1	375.81	302.60	4.8
N	A9	7.2 kV 1Ø Xarm Double Support	1	281.86	143.38	3.0
N	A9-1	7.2 kV 1Ø Xarm Single Support	4	977.12	267.00	9.6
N	C7-2	12.5 kV 3Ø Heavy Xarm Deadend	2	1,127.42	1,277.98	21.6
N	C9-3	12.5 kV 3Ø Hvy Single Crossarm	1	281.86	162.27	3.6
N	E1-3	Single Down Guy, Small	10	1,879.00	480.90	9.6
N	E2-3	Single Overhead Guy, Small	1	244.28	40.34	2.4
N	E9-4	Triple Down Guy, Large	1	319.44	213.97	3.2
N	F1-3P	Anchor Assembly, 20" Plate	8	3,006.48	390.64	28.8
N	F1-4P	Anchor Assembly, 24" Plate	3	1,127.43	238.47	10.8
N	G105C-10	7.2 kV 1Ø Xfrm, Conv, 10 KVA	1	939.53	908.76	6.6
N	HDPE2	Conduit, HDPE, 2"	220	825.00	237.60	5.3

Matanuska Electric Association, Inc.

Work Order Estimated Cost Report

N	HDPE4	Conduit, HDPE, 4"	10	47.00	35.90	0.6
N	J10	Sec Attach, Clevis	1	56.37	10.79	0.5
N	M2-11	Grounding Assembly, Rod Type	2	375.80	88.68	2.4
N	M2-11B	Grounding Assembly, Rod Type	7	1,315.30	310.38	8.4
N	M5-9	Fused Cutout, Crossarm Mount	1	187.90	177.04	2.2
N	PVC2SS	Short Sweep Elbow, 2" PVC	4	563.72	27.68	2.4
N	R2-30	Clearing, 30 ft, full width	135	766.80	0.00	0.0
N	UG7D-15	7.2 kV 1Ø Xfrm, DE, 15 KVA	1	1,127.44	1,380.03	7.2
N	UK5	Secondary Pedestal, Fiberglass	1	281.86	135.09	2.0
N	UM12P	Equip Snow Marker Wand	2	11.26	33.44	1.2
N	UM1-7T	Vault, 1-ph Xfrm	1	751.63	322.12	5.4
N	UM2	7.2 kV 1Ø Primary Riser	1	1,503.24	571.38	10.8
N	UM5/2	Secondary Riser, 2"	1	375.81	74.85	3.6
N	UM5/4	Secondary Riser, 4"	1	375.81	120.60	3.6
N	UR2-S24	Trench & Backfill, 24" deep	110	723.80	0.00	4.6
N	UR2-S48	Trench & Backfill, 48" deep	215	1,737.20	0.00	12.4
NX	MTR1	Meter, 1Ø	1	93.96	0.00	0.6
R	#1/0ACSR	Conductor, 1/0 ACSR, "Raven"	252	209.16	0.00	1.5
R	#1/0TPX	Conductor, OH, 1/0 Triplex	154	115.50	0.00	1.2
R	#2/0URD	Cable, UG Sec, 2/0 URD	70	58.10	0.00	0.5
R	#4ACSR	Conductor, #4 ACSR, "Swanate"	3020	1,359.00	0.00	15.9
R	25-7	Pole, 25-7	1	225.48	0.00	2.4
R	30-6	Pole, 30-6	1	263.07	0.00	2.4
R	40-2	Pole, 40-2	1	300.65	0.00	2.6
R	40-4	Pole, 40-4	4	1,202.60	0.00	10.6
R	45-4	Pole, 45-4	1	300.65	0.00	2.6
R	A8	7.2 kV 1Ø Double Deadend	1	150.32	0.00	1.9
R	A9	7.2 kV 1Ø Xarm Double Support	2	225.48	0.00	2.4
R	A9-1	7.2 kV 1Ø Xarm Single Support	1	97.71	0.00	1.0
R	C7-2	12.5 kV 3Ø Heavy Xarm Deadend	1	225.48	0.00	4.3
R	E1-3	Single Down Guy, Small	2	150.32	0.00	0.8
R	E9-4	Triple Down Guy, Large	1	127.77	0.00	1.3
R	F1-4P	Anchor Assembly, 24" Plate	4	601.28	0.00	5.8
R	G105C-10	7.2 kV 1Ø Xfrm, Conv, 10 KVA	1	375.81	0.00	2.6
R	J5	Sec Attach, Spool	1	22.55	0.00	0.2
R	J6	Sec Attach, Swing Clevis	1	22.55	0.00	0.2
R	M2-11	Grounding Assembly, Rod Type	2	150.32	0.00	1.0
R	M2-11B	Grounding Assembly, Rod Type	1	75.16	0.00	0.5

Matanuska Electric Association, Inc.

Work Order Estimated Cost Report

R	M5-9	Fused Cutout, Crossarm Mount	1	75.16	0.00	0.9
R	UM5/2	Secondary Riser, 2"	1	150.32	0.00	1.4
R	VA7X	14.4 kV 1Ø Off Exist 1Ø DE	1	93.95	0.00	1.4
R	VC7-2	25 kV 3Ø Heavy Xarm Deadend	1	225.48	0.00	4.3
RA	MTR1	Meter, 1Ø	1	0.00	0.00	0.0

461.3

ADJ FACTORS

	<u>Misc Costs</u>	<u>Other Costs</u>		
N	Normal Installation			
R	Retirement	Meters: \$0.00	\$54,809.69	Labor
HI	Hot Installation	Transformers: \$0.00	\$20,064.10	Materials
HR	Hot Retirement		\$13,702.42	Engineering (25% of Labor)
W	Winter		\$0.00	Total Additional Costs:
X	No Material			
		Total Additional Cost	\$0.00	

\$88,576.21 TOTAL ESTIMATE



STAKING SHEET-- MATANUSKA ELECTRIC ASSOCIATION, INC.
ALASKA 2 MATANUSKA

v1.2

Name: Wasilla City Of
Area Location: CITY OF WASILLA S. MACK DRIVE
Map Number: 17-J-6

Township: T17N Range: R1W Section: 24

Voltage: 7.2
Contractor Code: 3 - Palmer Unit Pri
Efficiency Multiplier: 1.2

W/O#: 103543
S/O#: 706208
Engineer: Mary J Dolmatoff Date:
Approved: Thomas O'Hare Date:

STRUCTURE	BACK SPAN	* # LN	WIRE	TOTAL #	POLE TRENCH	#	PRI-UNIT	#	TRANS	#	GRND	#	GUY	GL #	ANCHOR	#	SEC.	#	METER	#	MISC. UNIT	COMMENTS
K69A-2	288	E 1	#2TPX	290	1	40-4	1	VC7-2		1	M2-11B	2	E1-4		1	F1-4P	1	UM5/2		1	M3-25B	
		E					1	VC7X									1	J10				
K69A 3	288	E 4	#397.5AAC	724	1	40-4	1	C9-3	1	G105C-25	1	M2-11B				1	J10					
-3 S1	75	C 1	#4/0TPX	75	1	35-5				1	E1-3	20	1	F1-3P	1	UM5/4						
		C														1	J10					
K69A-3 S1	55	C 1	#350URD	55	10	UR2-S24										1	UK5			10	HDPE4	Do not make connections in pedestal. This is for future services
		C																		1	UM12P	
		C																		2	PVC2SS	
K69A 3A	154	E 1	#397.5AAC	154	1	40-4	1	C9-1	1	G105-25	1	M2-11B				1	J10					



STAKING SHEET-- MATANUSKA ELECTRIC ASSOCIATION, INC.
ALASKA 2 MATANUSKA

v1.2

Name: Wasilla City Of
Area Location: CITY OF WASILLA S. MACK DRIVE
Map Number: 17-J-6
Township: T17N Range: R1W Section: 24

Voltage: 7.2
Contractor Code: 3 - Palmer Unit Pri
Efficiency Multiplier: 1.2

W/O#: 103543
S/O#: 706208
Engineer: Mary J Dolmatoff Date:
Approved: Thomas O'Hare Date:

STRUCTURE	BACK SPAN	* # LN	WIRE	TOTAL #	POLE TRENCH	# PRI-UNIT	# TRANS	# GRND	# GUY	GL #	ANCHOR #	SEC. #	METER #	MISC. UNIT	COMMENTS	
K69A-3AA	166	E 4	#397.5AAC	.664												
		C		1	40-4	1	C9-3									
S1(old)	89	R 1	#1/0TPX	.89	1	30-6					1	J5				
RMP	78	R 1	#1/0TPX	.65	1	25-7					1	J6	1	MTR1	MTR: T53395	
K69A-3B	366	E 4	#1/0ACSR	1444	1	45-4	1	VA7-1	1	M2-11B1	E1-3	24	2	F1-3P	2	M5-1
		E				1	C9-3		1	E9-3					2	M5-5
		E													3	M5-9



STAKING SHEET-- MATANUSKA ELECTRIC ASSOCIATION, INC.
ALASKA 2 MATANUSKA

v1.2

Name: Wasilla City Of
Area Location: CITY OF WASILLA S. MACK DRIVE
Map Number: 17-J-6
Township: T17N Range: R1W Section: 24

Voltage: 7.2
Contractor Code: 3 - Palmer Unit Pri
Efficiency Multiplier: 1.2

W/O#: 103543
S/O#: 706208
Engineer: Mary J Dolmatoff
Approved: Thomas O'Hare
Date:

STRUCTURE	BACK SPAN	* # LN	WIRE	TOTAL #	POLE TRENCH	#	PRI-UNIT	#	TRANS	#	GRND	#	GUY	GL	#	ANCHOR	#	SEC.	#	METER	#	MISC. UNIT	COMMENTS	
K69A-3B-A	264	E 4	#1/0ACSR	1056																				
		C		1	40-4	1	UM2			1	M2-11													
		C				1	C1-1																	
K69A-3B-A-S1	215	C 1	#1/0 AL JCN 15	285	215	UR2-S48	1	UM1-7T	1	UG7D-15												220	HDPE2	
		C																				2	PVC2SS	
		C																				1	UM12P	
MOH	30	C 1	#2/0URD	40	30	UR2-S24														1	MTR1		MTR: T53395	
K69A-4	40	E 4	#397.5AAC	160	1	45-4	1	C9-3														1	M3-41C	
		E 2	#1/0 ACSR 6/1	80			1	VA8														1	M5-9	



v1.2

STAKING SHEET-- MATANUSKA ELECTRIC ASSOCIATION, INC.
ALASKA 2 MATANUSKA

Voltage : 7.2
Contractor Code : 3 - Palmer Unit Pri
Efficiency Multiplier : 1.2

W/O#: 103543

S/O#: 706208

Engineer: Mary J Dolmatoff Date:

Approved: Thomas O'Hare Date:

Name: Wasilla City Of

Area Location: CITY OF WASILLA S. MACK DRIVE

Map Number: 17-J-6

Township: T17N

Range: R1W

Section: 24

STRUCTURE	BACK SPAN	# LN	WIRE	TOTAL #	POLE TRENCH	#	PRI-UNIT	#	TRANS	#	GRND	#	GUY	GL #	ANCHOR	#	SEC.	#	METER	#	MISC. UNIT	COMMENTS
K69A-4-2N	140	E 2	#1/0 ACSR 6/1	252																		Remove pole -2N and install new pole 20' east of existing pole. Pole number to remain the same. Relocate existing service to new pole.
		R 1			1	45-4	1	A9	1	G105C-10	1	M2-11						1	UM5/2			
		C 1			1	45-4	1	A9	1	G105C-10	1	M2-11						1	UM5/2			
MTA (old)	70	E																				Remove/abandon existing service to MTA hute. Trench in new service from new pole -2N after pole has been installed. Make contact with MTA prior to disconnect/reconnect
		R 1	#2/0URD	70																		
MTA (new)	120	E																				
		C 1	#2/0URD	120	70	UR2-S24																



STAKING SHEET-- MATANUSKA ELECTRIC ASSOCIATION, INC.
ALASKA 2 MATANUSKA

v1.2

Name: Wasilla City Of
Area Location: CITY OF WASILLA S. MACK DRIVE
Map Number: 17-J-6

Voltage: 7.2
Contractor Code: 3 - Palmer Unit Pri
Efficiency Multiplier: 1.2

W/O#: 103543
S/O#: 706208
Engineer: Mary J Dolmatoff
Approved: Thomas O'Hare
Date:

Township: T17N Range: R1W Section: 24

STRUCTURE	BACK SPAN	* # LN	WIRE	TOTAL #	POLE TRENCH	# PRI-UNIT	# TRANS	# GRND	# GUY	GL #	ANCHOR #	SEC. #	METER #	MISC. UNIT #	COMMENTS		
K69A-6	234	E 4	#397.5AAC	936	1	40-4	1	G105-15	1	M2-11B		1	UM5/2	1	M3-4	Trans: 6892 C8A to be installed on top of pole C8-1UB to be installed for taps	
		E 1	#1/0ACSR	234													
		R					1	C9-1							4		M5-1
		R					1	C9-3									
		C					1	C8A							4		M5-1
C					1	C8-1UB											
K69A-6-1E(old)	63	R 4	#1/0ACSR	252	1	40-4	1	C7-2			2	E1-3	2	F1-4P		Remove existing pole and equipment, install new pole 20-25' east of existing. Pole number to remain the same.	
K69A 6 1E	82	C 4	#1/0ACSR	328	1	40-4	1	C7-2			2	E1-3	20/25	F1-4P		Set new pole 20-25' east of existing, pole number to remain the same.	
K69A-6A(old)	98	R 4	#397.5AAC	392	1	40-2	1	VC7-2		1	M2-11B	1	E9-4	2	F1-4P	1	M5-9
		R					1	VA7X									



v1.2

STAKING SHEET-- MATANUSKA ELECTRIC ASSOCIATION, INC.
ALASKA 2 MATANUSKA

Voltage: 7.2
Contractor Code: 3 - Palmer Unit Pri
Efficiency Multiplier: 1.2

W/O#: 103543
S/O#: 706208
Engineer: Mary J Dolmatoff
Approved: Thomas O'Hare
Date:

Name: Wasilla City Of
Area Location: CITY OF WASILLA S. MACK DRIVE
Map Number: 17-J-6
Township: T17N Range: R1W Section: 24

Page 6 of 10

STRUCTURE	BACK SPAN	* # LN	WIRE	TOTAL #	POLE TRENCH	# PRI-UNIT	# TRANS	# GRND	# GUY	GL #	ANCHOR #	SEC. #	METER #	MISC. UNIT	COMMENTS
K69A 6A	250	C 4	#397.5AAC	1000 1	50-4	1 A7X-3	1	M2-11B 1	E9-4	25/1	F1-3P			1 M5-9	
		C				1 C7-2		1	E1-3	25 1	F1-4P				
K69A 6A GP	72	C		1	35-5			1	E1-3	25 1	F1-3P				Set pole 10' past outline
		C						1	E2-3						
K69A-7(old)	400	R 2	#4ACSR	800 1	40-4	1 A9-1		1 M2-11							
K69A 7	160	C 2	#1/0ACSR	320 1	40-4	1 A9-1		1 M2-11B 1	E1-3	25 1	F1-3P				
K69A 7A	200	C 2	#1/0ACSR	400 1	40-4	1 A9-1		1 M2-11B							
K69A 7B	200	C 2	#1/0ACSR	400 1	40-4	1 A9-1		1 M2-11B							



STAKING SHEET-- MATANUSKA ELECTRIC ASSOCIATION, INC.
ALASKA 2 MATANUSKA

W/O#: 103543

S/O#: 706208

Voltage : 7.2
Contractor Code : 3 - Palmer Unit Pri
Efficiency Multiplier : 1.2

Engineer: Mary J Dolmatoff Date:

Approved: Thomas O'Hare Date:

v1.2

Name: Wasilla City Of

Area Location: CITY OF WASILLA S. MACK DRIVE

Map Number: 17-J-6

Township: T17N Range: R1W Section: 24

Page 7 of 10

STRUCTURE	BACK SPAN	* # LN	WIRE	TOTAL #	POLE TRENCH	# PRI-UNIT	# TRANS	# GRND	# GUY	GL #	ANCHOR #	SEC. #	METER #	MISC. UNIT	COMMENTS
K69A-8(old)	427	R 2	#4ACSR	854 1	40-4	1 A9									
K69A-8	175	C 2	#1/0ACSR	350 1	40-4	1 A9-1	1	M2-11B							
K69A-8A(old)	338	R 2	#4ACSR	676 1	40-4	1 A8									No number on pole
K69A 8A	280	C 2	#1/0ACSR	560 1	45-4	2 A7-1	1	M2-11B 1	E1-3	25 1	F1-3P				
		C						1	E1-3	25 1	F1-3P				
K69A 8B	160	C 2	#1/0ACSR	320 1	40-4	1 A8	1	M2-11B 1	E1-3		1 F1-3P				
		C						1	E1-3		1 F1-3P				



STAKING SHEET-- MATANUSKA ELECTRIC ASSOCIATION, INC.
ALASKA 2 MATANUSKA

W/O#: 103543

S/O#: 706208

Voltage : 7.2
Contractor Code : 3 - Palmer Unit Pri
Efficiency Multiplier : 1.2

Engineer: Mary J Dolmatoff Date:

Approved: Thomas O'Hare Date:

v1.2

Name: Wasilla City Of
Area Location: CITY OF WASILLA S. MACK DRIVE
Map Number: 17-J-6
Township: T17N Range: R1W Section: 24

STRUCTURE	BACK SPAN	# LN	WIRE	TOTAL #	POLE TRENCH	#	PRI-UNIT	#	TRANS	#	GRND	#	GUY	GL	#	ANCHOR	#	SEC.	#	METER	#	MISC. UNIT	COMMENTS	
K69A-9	345	E		1	40-4	1	VA7				1	E1-3	25	1	F1-3P								Existing #4ACSR to be replaced with #1/0 ACSR	
		E				1	A5-2																	
		R	2	#4ACSR	690																			
K69A-9	120	E		1	40-4	1	VA7				1	E1-3	25	1	F1-3P								Existing #4ACSR to be replaced with #1/0 ACSR	
		E				1	A5-2																	
		C	2	#1/0ACSR	240																			



STAKING SHEET-- MATANUSKA ELECTRIC ASSOCIATION, INC.
ALASKA 2 MATANUSKA

W/O#: 103543

Voltage: 7.2

S/O#: 706208

Contractor Code: 3 - Palmer Unit Pri

Engineer: Mary J Dolmatoff

Date:

Efficiency Multiplier: 1.2

Approved: Thomas O'Hare

Date:

v1.2

Name: Wasilla City Of

Area Location: CITY OF WASILLA S. MACK DRIVE

Map Number: 17-J-6

Township: T17N

Range: R1W

Section: 24

Page 9 of 10

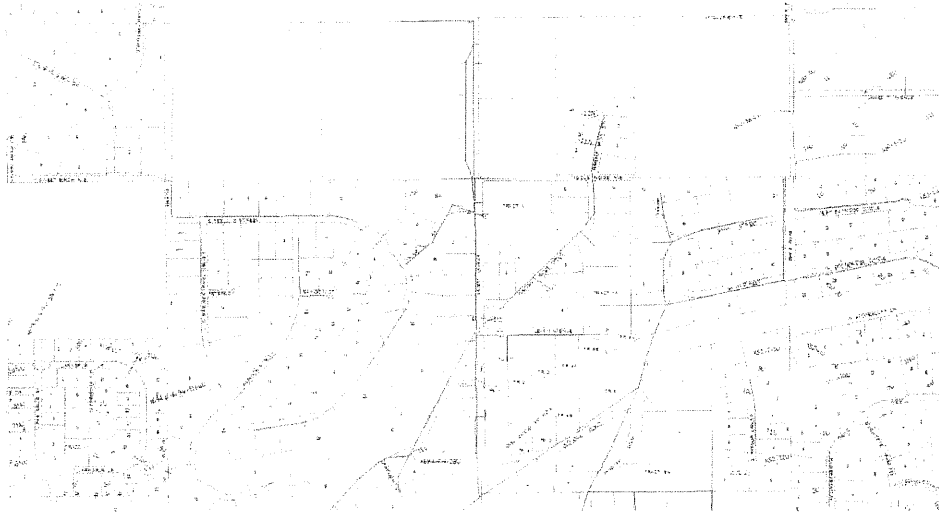
STRUCTURE	BACK SPAN	# LN	WIRE	TOTAL #	POLE TRENCH	# PRI-UNIT	# TRANS	# GRND	# GUY	GL	# ANCHOR	# SEC.	# METER	# MISC. UNIT	COMMENTS
-----------	-----------	------	------	---------	-------------	------------	---------	--------	-------	----	----------	--------	---------	--------------	----------

Sketch:

Substation: COTTLE Feeder: 28 - MC425 Phase: ABC

Directions:

Comment:



Action	Conductor	Wire Feet	No. of Wires	Pole Line Feet
E	#1/0 ACSR 6/1	80	2	40
E	#1/0ACSR	234	1	234
E	#397.5AAC	2,484	4	728
E	#397.5AAC	154	1	154
E	#1/0ACSR	2,500	4	630
E	#1/0 ACSR 6/1	252	2	140
E	#2TPX	290	1	288
R	#2/0URD	70	1	70
R	#1/0ACSR	252	4	63
R	#1/0TPX	154	1	167
R	#4ACSR	1,654	2	828
R	#397.5AAC	392	4	98
R	#4ACSR	1,366	2	683
C	#350URD	55	1	55
C	#1/0ACSR	240	2	120
C	#397.5AAC	1,000	4	250
C	#1/0ACSR	328	4	82
C	#1/0ACSR	2,350	2	1,175
C	#4/0TPX	75	1	75
C	#1/0 AL JCN 15	285	1	215
C	#2/0URD	160	1	150



STAKING SHEET-- MATANUSKA ELECTRIC ASSOCIATION, INC.
 ALASKA 2 MATANUSKA

v1.2

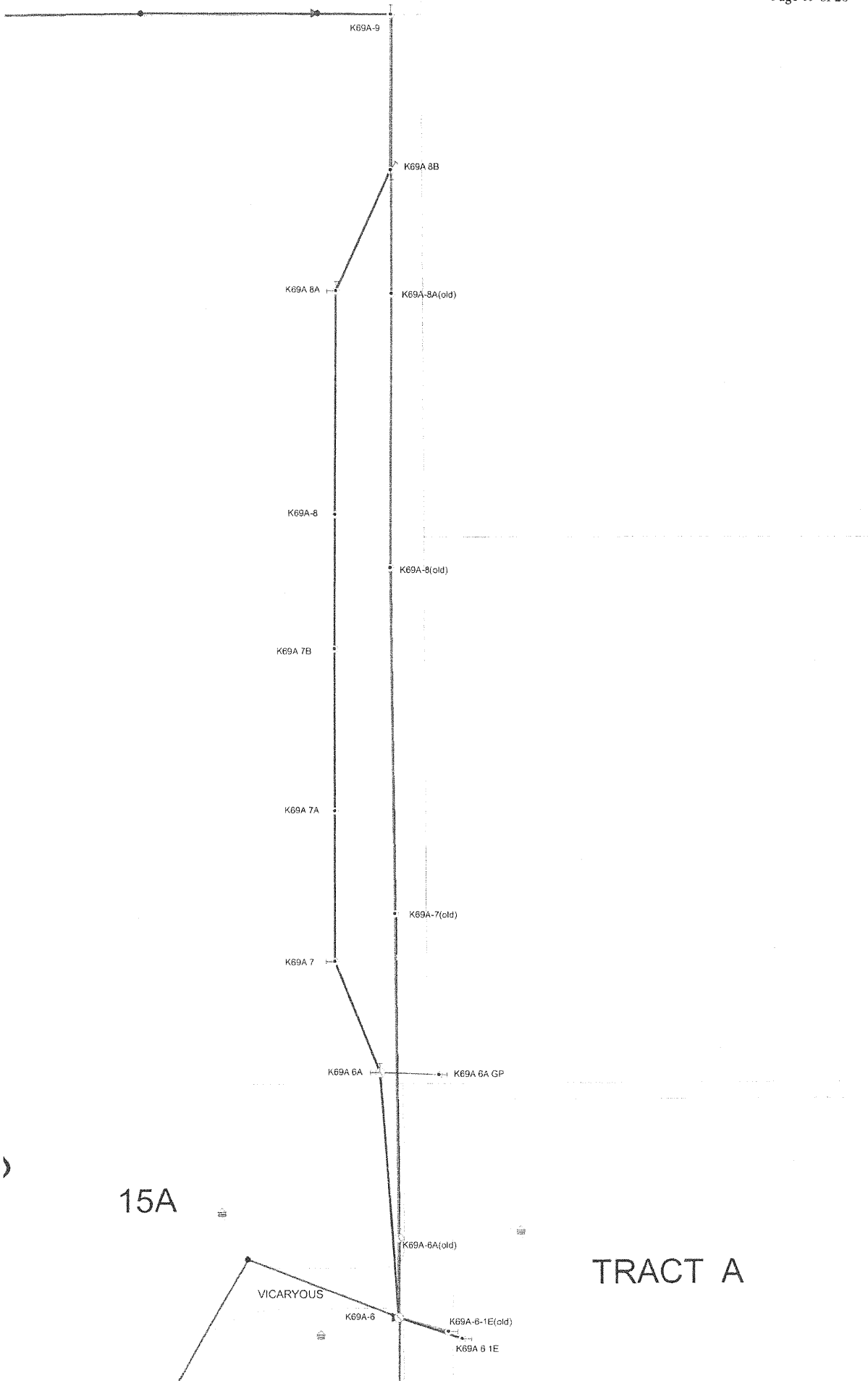
Name: Wasilla City Of
 Area Location: CITY OF WASILLA S. MACK DRIVE
 Map Number: 17-J-6

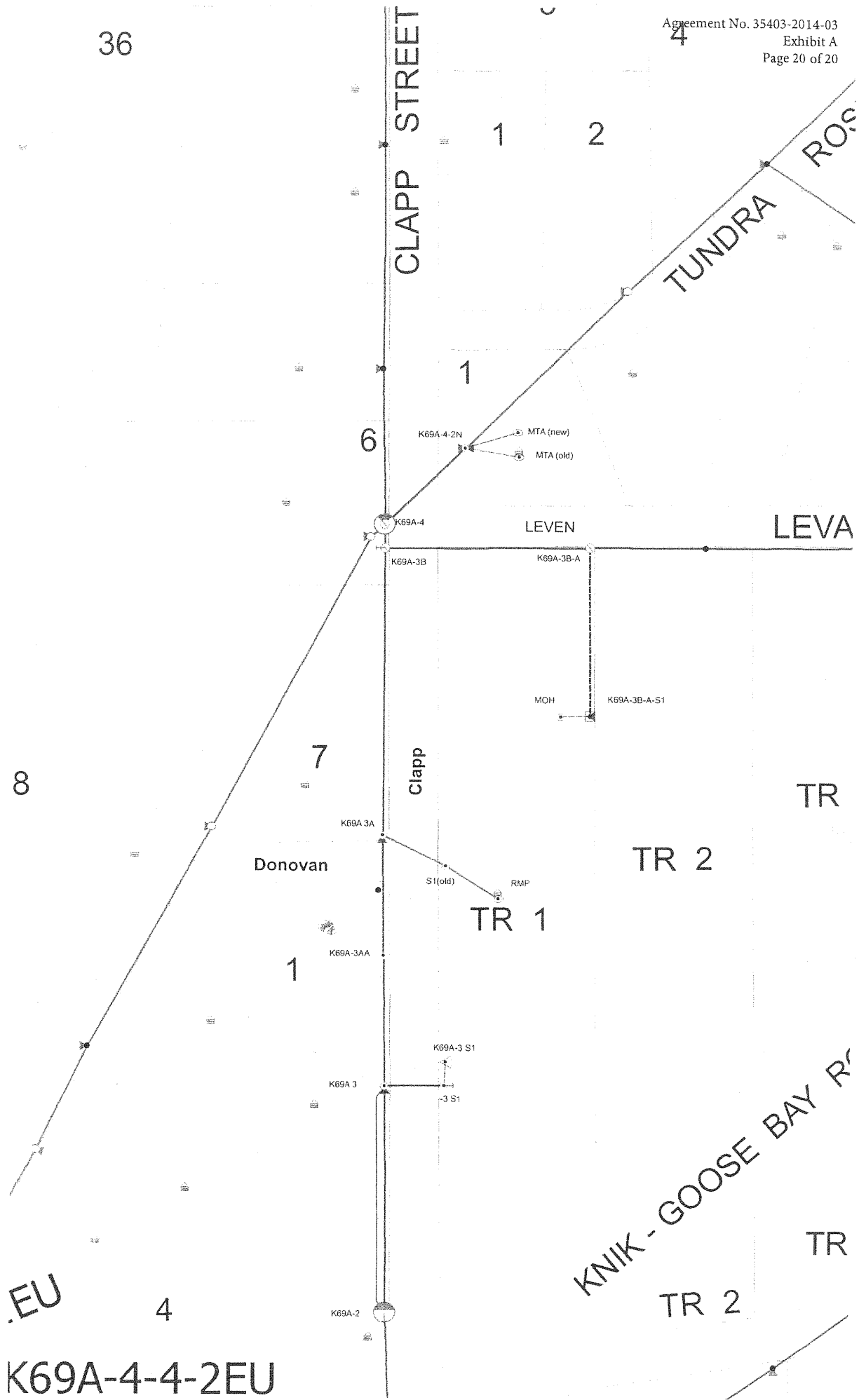
Voltage: 7.2
 Contractor Code: 3 - Palmer Unit Pr
 Efficiency Multiplier: 1.2

W/O#: 103543
 S/O#: 706208
 Engineer: Mary J Dolmatoff
 Approved: Thomas O'Hare

Township: T17N Range: R1W Section: 24

STRUCTURE	BACK SPAN	* # LN	WIRE	TOTAL #	POLE TRENCH	#	PRI-UNIT	#	TRANS	#	GRND	#	GUY	GL #	ANCHOR	#	SEC.	#	METER	#	MISC. UNIT	COMMENTS
-----------	-----------	--------	------	---------	-------------	---	----------	---	-------	---	------	---	-----	------	--------	---	------	---	-------	---	------------	----------





K69A-4-4-2EU

EXHIBIT "A"
SUMMARY OF ESTIMATE FOR ADJUSTMENT OF FACILITIES REQUIRED BY ROAD CONSTRUCTION

The **GENERAL COMMUNICATIONS, INC.**, estimate of work and materials required in connection with Project No.: **35403**,
Project Name: **Mack Drive Extension/Clapp Street Improvements**, Utility Work Order No. **13-3686**,
Agreement No. **35403-2014-02**

	CITY PARTICIPATION	UTILITY COST NON-REIMBURS.	TOTALS
PART I. UTILITY WORK			
RIGHT OF WAY (Acquisition Only)	-	-	-
Preliminary Engineering	5,228	-	5,228
Preliminary Engineering Overhead	-	-	-
TOTAL PRELIMINARY ENGINEERING	5,228	-	5,228
Construction Engineering	7,458	-	7,458
Construction Engineering Overhead	-	-	-
TOTAL CONSTRUCTION ENGINEERING	7,458	-	7,458
Construction Labor	-	-	-
Materials & Supplies	5,038	-	5,038
Materials Handling Charges	-	-	-
Transportation & Equipment	-	-	-
Contract Construction	40,430	-	40,430
DOL Fee 1% of Contract Construction	404	-	404
Miscellaneous Expenses	-	-	-
Construction Subtotal	45,873	-	45,873
Construction Overhead	-	-	-
GROSS CONSTRUCTION COSTS	45,873	-	45,873
(Credits)	-	-	-
Betterments	-	-	-
Non-Reimbursable	-	-	-
TOTAL CREDITS	-	-	-
NET CONSTRUCTION COSTS	45,873	-	45,873
TOTAL UTILITY WORK	58,558	-	58,558
PART II. BOROUGH WORK FOR UTILITY			
Preliminary Engineering @ 5%	-	-	-
Contract Construction	-	-	-
Construction Engineering @ 15%	-	-	-
TOTAL BOROUGH WORK FOR UTILITY	-	-	-
TOTAL ESTIMATED RELOCATION COSTS (Parts I & II)	58,558	-	58,558

UTILITY CONCURRENCE, BY: _____ SUBMITTED BY: _____

DATE: _____, 20____

TITLE: _____

Billing Format

1. Costs associated with GCI Communications Corp. (GCI) Project Work Order #13-3686 are reimbursable subject to the terms and conditions of this agreement.
2. Billings shall include proper supporting documentation, which shall include but not limited to the following:
 - a. Journal entry reports or timesheets detailing the employee's name, pay rate, hours charged and total costs.
 - b. Invoices for contract services including unit prices or hours and costs billed.
 - c. Material issue/return tickets verifying actual materials installed or returned.
 - d. Receipts or invoices for miscellaneous expenses with cost breakdown by item.
3. The unit estimate provided by GCI included company overheads loaded in the unit costs.
4. NOTICE OF WORK
Before work commences, the Company shall file a *Notice of Work* (NOW) with the Alaska Department of Labor and Workforce Development (DOL/WD). This requirement does not apply if the *total reimbursable* portion of the Agreement is less than \$2,000.

FILING FEE

Per AS 36.05, the DOL/WD will assess a 1% filing fee with the NOW. The fee is calculated as 1% of the *reimbursable contract construction* amount and is capped at \$5,000. The filing fee is not required when the *total reimbursable agreement* amount is less than \$25,000.

Per WHPL #198 (October 15, 2004) the Company must provide DOL/WD a sworn affidavit that their company labor wages and benefits meet or exceed the total prevailing wage requirements for the specific classification or worker listed in the applicable Laborers' and Mechanics' Minimum Rates of Pay pamphlet.

COMPLETION OF WORK

Upon completion of construction the Company will re-calculate the DOL/WD filing fee using the actual *reimbursable contract construction* amount. With this information, the Company shall file a *notice of completion* with DOL/WD and will either pay additional fees owed or receive a refund, as appropriate.

**MACK DRIVE EXTENSION/CLAPP STREET IMPROVEMENTS
 MSB PROJECT 35403
 GCI WO #13-3686**

Preliminary Engineering:		
GCI Engineering Labor	550.00	
Contract Design	3,290.00	
In House Project Manager	-	
Contract Project Manger	1,250.00	
In House Business Administrator	137.50	
Preliminary Engineering Overhead	-	
Total Preliminary Engineering		\$ 5,227.50
Construction Engineering:		
In House Project Manager	-	
Contract Project Manger	1,250.00	
Contract Inspector	4,800.00	
In House Business Administrator	137.50	
Survey	720.00	
Travel	550.00	
Construction Engineering Overhead:	-	
Total Construction Engineering		\$ 7,457.50
Construction Labor	-	
Materials & Supplies	5,038.28	
Materials Handling Charges	-	
Transportation & Equipment	-	
Contract Construction	40,430.17	
DOL/WD Fee @1%	404.30	
Miscellaneous Expenses	-	
Construction Subtotal		\$ 45,872.75
Construction Overhead	-	
GROSS CONSTRUCTION COSTS		\$ 45,872.75

MACK DRIVE EXTENSION/CLAPP STREET IMPROVEMENTS
 MSB PROJECT 35403
 GCI WO #13-3686

QUANTITY	Item #		U / M	Unit Labor	Total Labor	Unit Materials	Total Materials	Total
DESIGN								
10	In-House Design		EACH	\$55.00	\$550.00	n/a	n/a	\$550.00
10	Contractor Design Hourly Rate		EACH	\$75.00	\$750.00	n/a	n/a	\$750.00
4	Survey		EACH	\$180.00	\$720.00	n/a	n/a	\$720.00
4	Pole Engineering Load Calculations		EACH	\$285.00	\$1,140.00	n/a	n/a	\$1,140.00
	WILDCARD SPACE		EACH	\$0.00	\$0.00	n/a	n/a	\$0.00
TOTAL DESIGN					\$2,020.00		\$0.00	\$3,160.00
PERMITS								
0	Mat-Su Borough Permit		EACH	\$500.00	\$0.00	n/a	n/a	\$0.00
	Municipality of Anchorage permit fee		EACH	\$500.00	\$0.00	n/a	n/a	\$0.00
	Alaska Department of Transportation		EACH	\$600.00	\$0.00	n/a	n/a	\$0.00
	Alaska Department of Transportation fee per foot		PER FT.	\$1.00	\$0.00	n/a	n/a	\$0.00
	Alyeska		EACH	\$400.00	\$0.00	n/a	n/a	\$0.00
	DNR		EACH	\$400.00	\$0.00	n/a	n/a	\$0.00
	BLM		EACH	\$400.00	\$0.00	n/a	n/a	\$0.00
	ARR		EACH	\$300.00	\$0.00	n/a	n/a	\$0.00
	SWPPP		EACH	\$0.00	\$0.00	n/a	n/a	\$0.00
TOTAL PERMITS					\$0.00		\$0.00	\$0.00
MAKE READY WORK								
	GVEA/Chugach/ Local Power Co.		EACH	\$0.00	\$0.00	\$0.00	\$0.00	\$0.00
	ACS/Local Telco.		EACH	\$0.00	\$0.00	\$0.00	\$0.00	\$0.00
	Alas connect		EACH	\$0.00	\$0.00	\$0.00	\$0.00	\$0.00
4	Pole engineering review		EACH	\$350.00	\$1,400.00	\$0.00	\$0.00	\$1,400.00
	WILDCARD SPACE		EACH	\$0.00	\$0.00	\$0.00	\$0.00	\$0.00
TOTAL MAKE READY WORK					\$1,400.00		\$0.00	\$1,400.00
UNDERGROUND CONSTRUCTION								
1	Highest Cost Contractor		EACH	\$26,575.45	\$26,575.45	\$0.00	\$0.00	\$26,575.45
	WILDCARD SPACE		EACH	\$0.00	\$0.00	\$0.00	\$0.00	\$0.00
1	Materials		EACH	\$0.00	\$0.00	\$3,991.51	\$3,991.51	\$3,991.51
TOTAL UNDERGROUND CONSTRUCTION					\$26,575.45		\$3,991.51	\$30,566.96
AERIAL CONSTRUCTION, CAX & FIBER SPLICING								
1	Highest Cost Contractor		EACH	\$13,854.72	\$13,854.72	\$0.00	\$0.00	\$13,854.72
	WILDCARD SPACE		EACH	\$0.00	\$0.00	\$0.00	\$0.00	\$0.00
1	Materials		EACH	\$0.00	\$0.00	\$1,046.77	\$1,046.77	\$1,046.77
TOTAL AERIAL CONSTRUCTION					\$13,854.72		\$1,046.77	\$14,901.49
PROJECT MANAGEMENT								
20	PROJECT MANAGER CONTRACTED		PER HR.	\$125.00	\$2,500.00	\$0.00	\$0.00	\$2,500.00
50	CONSTRUCTION MANAGER INSPECTOR CONTRACTED		PER HR.	\$96.00	\$4,800.00	\$0.00	\$0.00	\$4,800.00
	Project Manager IN HOUSE ADD BENEFITS		PER HR.	\$85.00	\$0.00	\$0.00	\$0.00	\$0.00
	Construction Manager / QC IN HOUSE ADD BENEFITS		PER HR.	\$65.00	\$0.00	\$0.00	\$0.00	\$0.00
5	Business Administrator IN HOUSE ADD BENEFITS		PER HR.	\$55.00	\$275.00	\$0.00	\$0.00	\$275.00
10	TRAVEL		TRIP	\$55.00	\$550.00	\$0.00	\$0.00	\$550.00
	MEALS		DAY	\$0.00	\$0.00	\$0.00	\$0.00	\$0.00
	HOTEL		DAY	\$0.00	\$0.00	\$0.00	\$0.00	\$0.00
	VEHICLE RENTAL		DAY	\$0.00	\$0.00	\$0.00	\$0.00	\$0.00
	WILDCARD SPACE		EACH	\$0.00	\$0.00	\$0.00	\$0.00	\$0.00
	WILDCARD SPACE		EACH	\$0.00	\$0.00	\$0.00	\$0.00	\$0.00
	WILDCARD SPACE		EACH	\$0.00	\$0.00	\$0.00	\$0.00	\$0.00
	WILDCARD SPACE		EACH	\$0.00	\$0.00	\$0.00	\$0.00	\$0.00
TOTAL PROJECT MANAGEMENT COSTS					\$8,125.00		\$0.00	\$8,125.00
TOTAL PROJECT COSTS					\$51,975.17		\$5,038.28	\$58,153.45
977	TOTAL AERIAL ROUTE CONSTRUCTION FOOTAGE							
325	TOTAL UNDERGROUND ROUTE CONSTRUCTION FOOTAGE							
1701	TOTAL FIBER/COAX INSTALLATION FOOTAGE							

NOTE: Estimate includes materials. Permit cost included in GCI cost estimate removed, MSB to issue no cost permits.

Address or Project Name :	S. Mack Drive Extension
ER# :	
OSP WO# :	13-3686
Coax or Fiber Project :	Coax
Cost Estimate Completed By :	Jason Francis
Date of this Estimate :	5/16/2013

X	Reimbursable
	Non-Reimbursable
	Betterment

		UNIT COSTS				
	U / M	Labor	Total Labor	Total Materials	Total	
Quantity	System Design					
10	In-House Design hourly rate	EACH	\$55.00	\$550.00	\$0.00	\$550.00
10	Contractor Design hourly rate	EACH	\$75.00	\$750.00	\$0.00	\$750.00
4	Survey hourly rate	EACH	\$200.00	\$800.00	\$0.00	\$800.00
4	POLE ENGINEERING LOAD CALCULATIONS	EACH	\$285.00	\$1,140.00	\$0.00	\$1,140.00
0	PROJECT MANAGER CONTRACTED (PE)	EACH	\$0.00	\$0.00	\$0.00	\$0.00
	TOTAL COST FOR SYSTEM DESIGN			\$3,240.00	\$0.00	\$3,240.00
Quantity	PERMITS					
0	City of Cordova Permit Fee	EACH	\$500.00	\$0.00	\$0.00	\$0.00
0	City of Homer Permit Fee	EACH	\$500.00	\$0.00	\$0.00	\$0.00
0	City of Juneau Permit Fee	EACH	\$500.00	\$0.00	\$0.00	\$0.00
0	City of Kenai Permit Fee	EACH	\$500.00	\$0.00	\$0.00	\$0.00
0	City of Ketchikan Permit Fee	EACH	\$500.00	\$0.00	\$0.00	\$0.00
0	City of Nome Permit Fee	EACH	\$500.00	\$0.00	\$0.00	\$0.00
0	City of Petersburg Permit Fee	EACH	\$500.00	\$0.00	\$0.00	\$0.00
0	City of Seward Permit Fee	EACH	\$500.00	\$0.00	\$0.00	\$0.00
0	City of Sitka Permit Fee	EACH	\$500.00	\$0.00	\$0.00	\$0.00
0	City of Soldotna Permit Fee	EACH	\$500.00	\$0.00	\$0.00	\$0.00
0	City of Valdez Permit Fee	EACH	\$500.00	\$0.00	\$0.00	\$0.00
0	City of Wrangell Permit Fee	EACH	\$500.00	\$0.00	\$0.00	\$0.00
0	FNSB Permit Fee	EACH	\$500.00	\$0.00	\$0.00	\$0.00
0	FNSB Permit Fee per foot	PER FT	\$1.00	\$0.00	\$0.00	\$0.00
0	Kenai Borough Permit Fee	EACH	\$500.00	\$0.00	\$0.00	\$0.00
0	Municipality of Anchorage permit fee	EACH	\$500.00	\$0.00	\$0.00	\$0.00
1	Matsu Borough Permit Fee	EACH	\$500.00	\$500.00	\$0.00	\$500.00
0	Alaska Department of Transportation permit fee	EACH	\$600.00	\$0.00	\$0.00	\$0.00
0	Alaska Department of Transportation permit fee per foot	PER FT	\$1.00	\$0.00	\$0.00	\$0.00
0	Alaska Department of Transportation Lane Closure Permit Fee	EACH	\$100.00	\$0.00	\$0.00	\$0.00
0	DNR	EACH	\$0.00	\$0.00	\$0.00	\$0.00
0	BLM	EACH	\$0.00	\$0.00	\$0.00	\$0.00
0	ARRC permit fee	EACH	\$1,000.00	\$0.00	\$0.00	\$0.00
0	WILDCARD SPACE	EACH	\$0.00	\$0.00	\$0.00	\$0.00
0	WILDCARD SPACE	EACH	\$0.00	\$0.00	\$0.00	\$0.00
	TOTAL PERMITS			\$500.00	\$0.00	\$500.00
Quantity	MAKE READY WORK					
0	GVEA/Chugach/Local Power Co	EACH	\$0.00	\$0.00	\$0.00	\$0.00
0	ACS/Local Telco	EACH	\$0.00	\$0.00	\$0.00	\$0.00
0	Alas connect	EACH	\$0.00	\$0.00	\$0.00	\$0.00
4	Pole Engineering Review	EACH	\$350.00	\$1,400.00	\$0.00	\$1,400.00
0	WILDCARD SPACE	EACH	\$0.00	\$0.00	\$0.00	\$0.00
	TOTAL MAKE READY			\$1,400.00	\$0.00	\$1,400.00
Quantity	UNDERGROUND CONSTRUCTION					
1	Highest Cost Contractor	EACH	\$26,575.45	\$26,575.45	\$0.00	\$26,575.45
0	WILDCARD SPACE	EACH	\$0.00	\$0.00	\$0.00	\$0.00
1	Materials	EACH	\$0.00	\$0.00	\$0.00	\$0.00
	TOTAL UNDERGROUND CONSTRUCTION			\$26,575.45	\$0.00	\$26,575.45
Quantity	AERIAL CONSTRUCTION, COAX & FIBER SPLICING					
1	Highest Cost Contractor	EACH	\$13,854.72	\$13,854.72	\$0.00	\$13,854.72
0	WILDCARD SPACE	EACH	\$0.00	\$0.00	\$0.00	\$0.00
1	Materials	EACH	\$0.00	\$0.00	\$0.00	\$0.00
	TOTAL AERIAL CONSTRUCTION			\$13,854.72	\$0.00	\$13,854.72
Quantity	PROJECT MANAGEMENT					
20	PROJECT MANAGER CONTRACTED (CE)	Per Hr.	\$125.00	\$2,500.00	\$0.00	\$2,500.00
50	CONSTRUCTION MANAGER INSPECTOR CONTRACTED	Per Hr.	\$96.00	\$4,800.00	\$0.00	\$4,800.00
0	Project Manager IN HOUSE ADD BENEFITS	Per Hr.	\$85.00	\$0.00	\$0.00	\$0.00
0	Construction Manager / QC IN HOUSE ADD BENEFITS	Per Hr.	\$65.00	\$0.00	\$0.00	\$0.00
5	Business Administrator IN HOUSE ADD BENEFITS	Per Hr.	\$55.00	\$275.00	\$0.00	\$275.00
10	TRAVEL	TRIP	\$55.00	\$550.00	\$0.00	\$550.00
0	MEALS	DAY	\$0.00	\$0.00	\$0.00	\$0.00
0	HOTEL	DAY	\$0.00	\$0.00	\$0.00	\$0.00
0	VEHICLE RENTAL	DAY	\$0.00	\$0.00	\$0.00	\$0.00
0	WILDCARD SPACE	EACH	\$0.00	\$0.00	\$0.00	\$0.00
0	WILDCARD SPACE	EACH	\$0.00	\$0.00	\$0.00	\$0.00
0	WILDCARD SPACE	EACH	\$0.00	\$0.00	\$0.00	\$0.00
	TOTAL PROJECT MANAGEMENT COSTS			\$8,125.00	\$0.00	\$8,125.00
	TOTAL PROJECT COST			\$53,695.17	\$0.00	\$53,695.17
977'	Total Aerial Route Construction Footage					
325'	Total Underground Route Construction Footage					
1701'	Total Fiber/Coax Installation Footage					

COMMENTS:

**Central Region Underground
Technical Bid Unit Sheet**

PROJECT NAME:

Enable Davis Bacon Unit Rates (Y/N)?	Y	S. Mack Road Extension Phase 1
--------------------------------------	---	-----------------------------------

Contractor: NA Contract No.

ITEM	"Regular" BURIED CABLE	Type	Amount	Contractor 1 Line Item Total Cost	Contractor 2 Line Item Total Cost	Contractor 3 Line Item Total Cost	Contractor 4 Line Item Total Cost
101c	Trench 36" - 48" Depth (Dirt) < 500' Place Existing .500 with New .625 CIC from Aerial Riser on S. Clapp Rd to Ped location on S. Tundra Rose Dr	Per ft.	325	\$5,443.75	\$5,525.00	\$5,687.50	\$5,495.75
113a	Place "Bullet Style" Pedestal Place New "Bullet Style" Pedestal on W. Levan Dr Place New "Bullet Style" Pedestal on S. Tundra Rose Cir	Each	2	\$105.00	\$120.00	\$90.00	\$96.86
113b	Place "Dog House Style" Pedestal Place New "Dog House" Pedestal at S. Donovan Dr and S. Clapp Rd Place New "Dog House" Pedestal at W. Levan Dr and S. Clapp Rd	Each	2	\$192.50	\$200.00	\$160.00	\$180.40
114	Place Ground Rods Place Ground Rod at New "Dog House" Locations	Each	2	\$126.00	\$150.00	\$102.00	\$102.50
115	Place Vaults up to 36 X 48	Each		\$0.00	\$0.00	\$0.00	\$0.00

ITEM	"Miscellaneous" BURIED CABLE	Type	Amount	Contractor 1 Line Item Total Cost	Contractor 2 Line Item Total Cost	Contractor 3 Line Item Total Cost	Contractor 4 Line Item Total Cost
116a	Place Riser (2" - 4") with Stand Off Brackets	Each	2	\$787.50	\$450.00	\$450.00	\$380.80

Davis Bacon Hourly Rate Schedule

Position No.	Description	Typical Eqpt Used	Type	Amount	Contractor 1 Line Item Total Cost	Contractor 2 Line Item Total Cost	Contractor 3 Line Item Total Cost	Contractor 4 Line Item Total Cost
A0704	Tele Com Cable Splicer Support of Aerial and Buried Splicing	bucket truck 1 x 10hrs	Hourly	10	\$1,500.00	\$1,341.80	\$0.00	\$1,383.80
A0706	Tele Com Journeyman Lineman; Tele Com Equipment Operator; Tech Support of Aerial and Buried Construction	bucket truck 1 x 20hrs	Hourly	20	\$2,900.00	\$2,785.60	\$4,760.00	\$2,665.00
A0710	Material Handler Pick-up of Material Return of Unused Material	flatbed 1 X 5hrs 1 X 5hrs	Hourly	10	\$830.00	\$746.10	\$1,770.00	\$768.80
(S or N)1201	Laborer group 1 & 2 (including ditch digger) Support of Aerial and Buried Construction	one ton 2 x 20hrs	Hourly	40	\$3,400.00	\$3,422.80	\$7,200.00	\$3,465.20

Davis Bacon Equipment Use/Hour

One ton utility truck Support of Aerial and Buried Construction		Hourly	20	\$440.00	\$600.00	\$540.00	\$512.60
F 450/550 flatbed Support of Aerial and Buried Construction	1 x 20hrs	Hourly	20	\$600.00	\$600.00	\$500.00	\$451.00
Bucket Truck Support of Aerial Construction and Splicing	2 x 10hrs	Hourly	10	\$450.00	\$400.00	\$300.00	\$410.00
Air Compressor portable 185 CFM Support of Buried Construction	1 x 20hrs	Hourly	20	\$400.00	\$350.00	\$500.00	\$346.60
Backhoe (mini-excavator) Support of Buried Construction	1 x 20hrs	Hourly	20	\$880.00	\$900.00	\$1,900.00	\$820.00
Wacker Support of Buried Construction	1 x 20hrs	Hourly	20	\$400.00	\$200.00	\$200.00	\$307.60

TOTAL Project Cost Per Contractor

				\$18,454.75	\$17,791.30	\$24,159.50	\$17,388.91
--	--	--	--	-------------	-------------	-------------	-------------

Percent calculator (insert amount)

	10%	\$1,845.48	\$1,779.13	\$2,415.95	\$1,738.89
--	-----	------------	------------	------------	------------

NTP AMOUNT

		\$20,300.23	\$19,570.43	\$26,575.45	\$19,127.80
--	--	-------------	-------------	-------------	-------------

Hourly Rates subject to minimum (4) hrs call out charge per day

Total UG Const Ftg 325

Overtime will be charged at 1+1/2 times hourly rate

Total Cable Install Ftg 0

Hourly Rates are inclusive of all wages, burden, tools, supervision and home office overhead

Jobsite Foreman will be billed at A0706 rate.

Labor and Equipment hours are charged portal to portal

For DB Contractors Only:

	No DB Rate Available
	No STD Rate Available
	No Rate Available

**Central Region Aerial
Technical Bid Unit Sheet**

PROJECT NAME:

Enable Davis Bacon Unit Rates (Y/N)?	Y	S. Mack Road Extension Phase 1
--------------------------------------	---	-----------------------------------

Contractor: NA Contract No.

ITEM	AERIAL PLACEMENT	Type	Amount	Contractor 1 Line Item Total Cost	Contractor 2 Line Item Total Cost	Contractor 3 Line Item Total Cost	Contractor 4 Line Item Total Cost
201b	Place Strand (> 500')	Per ft.	977	\$1,709.75	\$1,954.00	\$1,758.60	\$1,851.13
	Place New Strand from Pole at S. Donovan Dr to New Tie-in location on W. Levan Dr		977				
202a	Lash 1 (ea.) Coax Cable (less than 500')	Per ft.	362	\$724.00	\$814.50	\$778.30	\$687.80
	Relash existing Facilities from S. Donovan Dr to Aerial Crossing at W. Levan Dr		362				
202b	Lash 1 (ea.) Coax Cable (> 500')	Per ft.	1339	\$2,343.25	\$3,012.75	\$2,878.85	\$2,477.15
	Lash New .875 from S. Donovan Dr to New Tie-in location on W. Levan Dr		1339				
203d	Delash/Relash	Per ft.	362	\$796.40	\$814.50	\$1,610.90	\$611.78
	Delash existing Facilities from S. Donovan Dr to Aerial Crossing at W. Levan Dr		362				
206a	Remove Aerial strand and cable	Per ft.	724	\$543.00	\$724.00	\$1,303.20	\$651.60
	Remove (2) Aerial Stands with .625/.750 Coax cable		724				
212	Bonding (Does not include grounding)	Each	1	\$10.50	\$10.00	\$17.70	\$7.18
	Place New Bonding at New Riser at Tie-in location on W. Levan Dr		1				
213	Grounding (Ground rod and vertical)	Each	1	\$122.50	\$100.00	\$265.50	\$102.50
	Place new Ground Rod and Vertical for New Riser at Tie-in location on W. Levan Dr		1				
ITEM	"Regular" SPLICING	Type	Amount	Contractor 1 Line Item Total Cost	Contractor 2 Line Item Total Cost	Contractor 3 Line Item Total Cost	Contractor 4 Line Item Total Cost
301	Trunk Station - Replacement	Each	1	\$525.00	\$375.00	\$1,769.80	\$384.38
	Place New Trunk Station at S. Levan Dr		1				
303	ACTIVE TIE IN	Each	2	\$350.00	\$150.00	\$0.00	\$205.00
	Tie-in New facilities at S. Donovan Dr		2				
304	Line Extender - Replacement	Each	1	\$405.00	\$300.00	\$530.95	\$307.50
	Place New Line Extender at S. Tundra Rose Cir. And S. Siberian Pea Cir		1				
307	Passives	Each	1	\$118.00	\$50.00	\$530.95	\$66.63
	Place New Passive at S. Donovan Dr		1				
308	Taps	Each	2	\$169.00	\$180.00	\$708.00	\$123.00
	Place New Tap at Tie-in Location on S. Tundra Rose Cir.		1				
	Place New Tap at S. Levan Ave and S. Clapp Rd		1				
309	Main Line Jumpers	Each	1	\$73.50	\$70.00	\$442.45	\$61.50
	Place New Main Line Jumper at S. Donovan Dr		1				
Total Line Items Cost				\$8,438.30	\$8,877.50	\$12,595.20	\$7,858.13
Percent Calculator (Insert amount)			10%	\$843.83	\$887.75	\$1,259.52	\$785.81
NTP AMOUNT				\$9,282.13	\$9,765.25	\$13,854.72	\$8,643.94

Hourly Rates subject to minimum (4) hrs call out charge per day
 Overtime will be charged at 1+1/2 times hourly rate
 Hourly Rates are inclusive of all wages, burden, tools, supervision and home office overhead
 Jobsite Foreman will be billed at A0706 rate.
 Labor and Equipment hours are charged portal to portal
 For DB Contractors Only:

<input type="checkbox"/>	No DB Rate Available
<input type="checkbox"/>	No STD Rate Available
<input type="checkbox"/>	No Rate Available

Total Aerial Const Ftg	977
Total Cable Install Ftg	1701

Project #: 13-3686
Project Name: Mack Road Extension

- Estimate for:**
- 1-Line Design Material Estimate for 65% Plans
 - 1-Line Design Material Estimate for 95% Plans
 - Final Design Material Cost Estimate
- Reimbursable**
- Non-Reimbursable**
- Betterment**

Summary

<u>Sheet</u>	<u>Cost</u>
Buried Materials	\$2,757.25
Aerial Materials	\$872.31
Fiber Hardware, Electronics	\$0.00
Power Supply	\$0.00
Motorola Electronics, BBI	\$336.00
Taps	\$46.88
Connectors	\$186.13
Subtotal	\$4,198.57
20% Contingency	\$839.71
TOTAL	\$5,038.28

CONSTRUCTION ISSUE REQUEST

Name: Jason Francis Job Name: Mack Road Extension
 Date: 8/23/2014 Job Number: 07.8899.19820.0394.9926
 Approved by: Jerry Cochran Contractor: NA

		REV 8/15/13	QTY			Unit
010100035	010100035	Cable, .875 Jacketed Aerial	<u>1339</u>	OS	*OS*	FT
013800016	013800016	Cable, .625 1-1/4" CIC Innerduct	<u>325</u>	OS	*OS*	FT
020000004	020000004	Rod, Ground 5/8"x8'	<u>2</u>	OSCG	*OSCG*	Each
020000009	020000009	Rod, Ground Clamp 5/8"	<u>2</u>	N12	*N12*	Each
020000019	020000019	Wire, Copper Solid #6, 315' Roll	<u>315</u>	A14	*A14*	FT
030000002	030000002	Tape, Caution, Buried Fiber	<u>1</u>	J3	*J3*	Each
0326000012	0326000012	Coupler, 2" "Deep"	<u>4</u>	J11	*J11*	Each
032600004	032600004	Conduit, 2", 10' Sticks	<u>40</u>	OSCG	*OSCG*	Each
032600043	032600043	Sweep, PVC 2" Standard 90 Degree	<u>2</u>	J8	*J8*	Each
032600045	032600045	Sweep, PVC 2"x45 Degree	<u>2</u>	J8	*J8*	Each
033100002	033100002	1730 Amp Pedestal	<u>2</u>	OS	*OS*	Each
033100048	033100048	116 Tap Pedestal	<u>2</u>	OS	*OS*	Each
092800004	092800004	Tubing, Heat Shrink, CFT1700	<u>2</u>	G1	*G1*	Each
092800005	092800005	Tubing, Heat Shrink, CFT2000	<u>2</u>	G1	*G1*	Each
095700004	095700004	Cement, PVC	<u>1</u>	J7	*J7*	Each

CONSTRUCTION ISSUE REQUEST

Name: Jason Francis Job Name: Mack Road Extension
 Date: 8/23/2014 Job Number: 07.8899.19820.0394.9926
 Approved by: Jerry Cochran Contractor: NA

			REV 8/15/13	QTY		Unit
010200001	010200001	Dead-end, Wirewise, 102-114		<u>2</u>	I9 I9	Each
020000011	020000011	1/4" Strand, EHS		<u>977</u>	OS OS	FT
020000014	020000014	Strap, 2" Unistrut Clamp		<u>6</u>	I10 I10	Each
020000019	020000019	Wire, Copper, Solid, #6 AWG, 315 ft. Roll		<u>315</u>	A14 A14	Each
020000022	020000022	Ground Wire Staples, 1/4"		<u>50</u>	H10 H10	Each
020000032	020000032	Guy Hook, "Ram's Head"		<u>4</u>	I6 I6	Each
020000041	020000041	Lashing Wire		<u>4</u>	O20 O20	Roll
021600001	021600001	Clamp, D Lash Wire (Bugnut)		<u>10</u>	I2 I2	Each
021600003	021600003	Cable Strap, Zinc 10"		<u>50</u>	I2 I2	Each
021800004	021800004	Guy Clamp, 2 Bolt, 1/4" J1030		<u>2</u>	I2 I2	Each
021800019	021800019	Clamp, Suspension Straight, 3 Bolt		<u>3</u>	I4 I4	Each
021800042	021800042	Bolt, Machine, 5/8" x 14" J8814		<u>4</u>	I11 I11	Each
021800043	021800043	Bolt, Machine, 5/8" x 16" J8816		<u>2</u>	I11 I11	Each
021800049	021800049	Nut, Thimbleye 5/8" J6510		<u>2</u>	I12 I12	Each
021800053	021800053	Nut, Square 5/8" J8563		<u>5</u>	I6 I6	Each
021800065	021800065	Washer, Square 2" x 2"		<u>10</u>	I6 I6	Each
021800068	021800068	Guy Clamp, 2 Bolt 5/16" J926		<u>2</u>	I4 I4	Each
021800074	021800074	Screw Lag, 1/2" x 4" J8754		<u>25</u>	I4 I4	Each
022400008	022400008	Guard, Yellow Guy 8'		<u>2</u>	P1 P1	Each
025500003	025500003	Heavy Duty Stand Off, 15" WA15SB, "3 Leg"		<u>6</u>	OSCG OSCG	Each

CONSTRUCTION ISSUE REQUEST

Name: Jason Francis Job Name: Mack Road Extension
Date: 8/23/2014 Job Number: 07.8899.19820.0394.9926
Approved by: Jerry Cochran Contractor: NA

		REV 8/15/13	QTY			Unit
070400021	070400021	TAP 2 WAY 26DB 1GHZ COMPLETE (SA) PN SAT2MM-26541748, WEST 1 CATV	<u>2</u>	K5	K5	Each
070400076	070400076	POWER INSERTER 1GHZ WITH CLAMP (SA) 712974, TULSAT	<u>1</u>	K8	K8	Each