

DETAIL "A"

INSTALL 2"x4" WOOD POST
3' ABOVE FINISH GRADE.

FINISH GRADE

12" (MAX.)

3'

2"x4" WOOD POST
PAINTED BLUE AND
STENCILED W/ THE
WORD "WATER" IN
WHITE TWO (2) INCH
HIGH LETTERING.

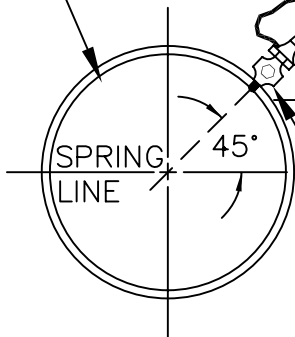
10' (MIN.)

1 1/4" MUELLER KEY
BOX (KB) WITH ROD

RUBBER COATED #2
THAW WIRE, TYREX OR
EQUAL (SEE NOTE 7)

KEY BOX ROD
(SEE NOTE 5)

WATER MAIN TYPE
D.I. OR C.I., IF A.C.
(SEE NOTE 6)



4" MIN.
8" MAX.

TYPE "K" SOFT COPPER
WATER SERVICE LINE

CORPORATION STOP
(SEE DETAIL "A")

CURB STOP
(SEE NOTE 4)

ON-PROPERTY
SERVICE LINE

NOTES:

1. USE MUELLER CORPORATION STOP NO.15050 OR EQUAL FOR STEEL PIPE.
2. USE MUELLER CORPORATION STOP NO.10016 OR EQUAL FOR WOOD STAVE PIPE.
3. USE MUELLER 1-INCH CORPORATION STOP NO.15000 OR EQUAL FOR DUCTILE PIPE.
4. USE MUELLER CURB STOP NO. H-15214 OR EQUAL FOR COPPER TO COPPER CONNECTIONS.
5. KB ROD TO BE ATTACHED TO CURB STOP WITH 9/64" X 4" BRASS COTTER PIN, NO SUBSTITUTIONS (MANUFACTURERS COTTER PIN SHALL NOT BE USED).
6. STAINLESS STEEL WRAP AROUND SERVICE SADDLE SHALL BE USED ON ALL A.C, PIPE. C.I.P. AND D.I.P. MAY BE DIRECT TAPPED.
7. THAW WIRE TO BE PLACED PARALLEL TO THE SERVICE LINE AND SHALL NOT COME IN CONTACT WITH THE SERVICE LINE AT ANY LOCATION.

REVISION: 12/09 MODIFIED NOTE 6

MUNICIPALITY



OF ANCHORAGE

SCALE:
NTS

APPROVED:

REVISED:
12/09

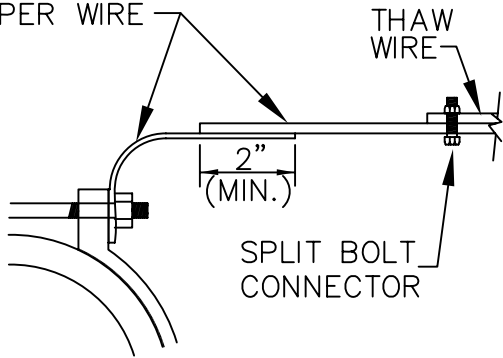
WATER SERVICE CONNECT

1"

SECTION #
60.06

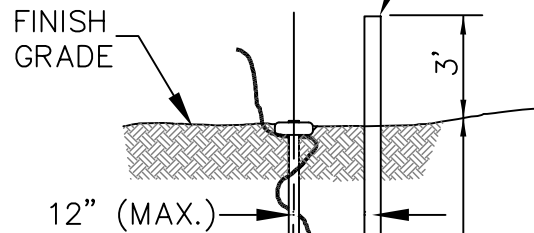
DETAIL #
60-7

1-1/4" x 6" #8 COPPER SHEET BRAZED TO #2 COPPER WIRE

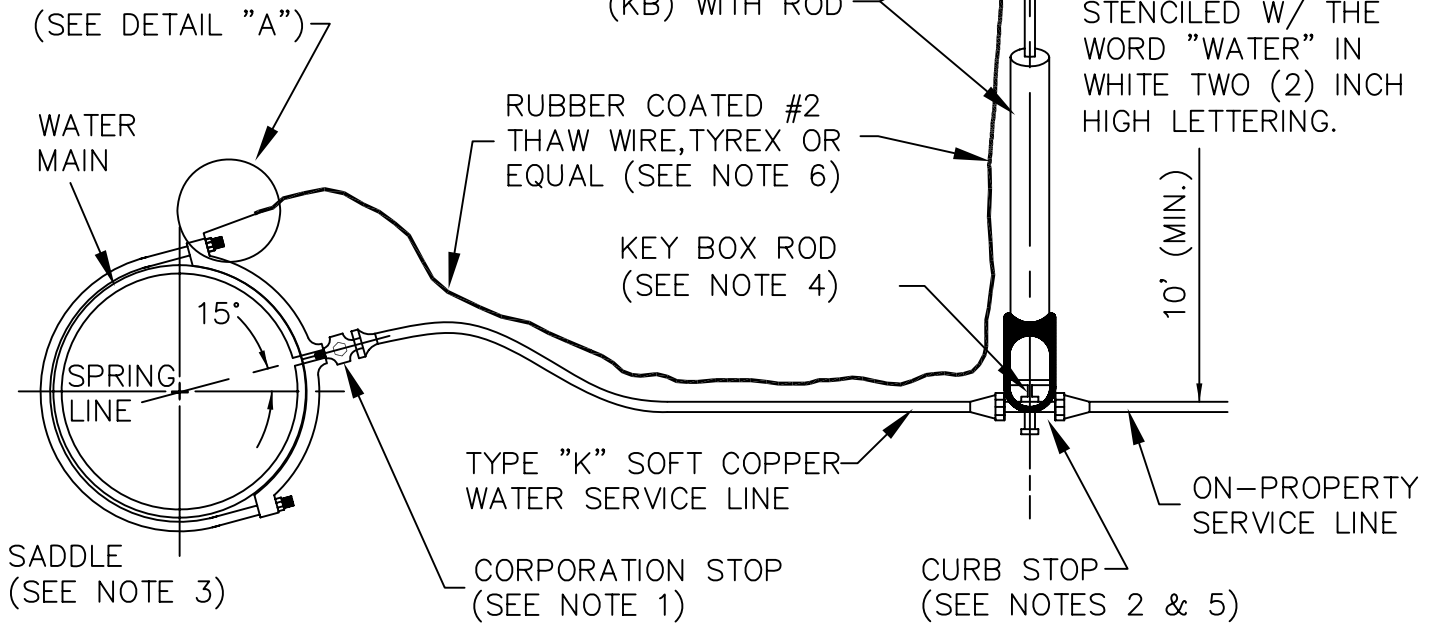


DETAIL "A"

INSTALL 2"x4" WOOD POST 3' ABOVE FINISH GRADE.



2"x4" WOOD POST PAINTED BLUE AND STENCILED W/ THE WORD "WATER" IN WHITE TWO (2) INCH HIGH LETTERING.



NOTES:

1. USE MUELLER CORPORATION STOP NO. 15025 OR EQUAL.
2. USE MUELLER CURB STOP NO. H15184 ORISEAL OR EQUAL FOR COPPER TO IRON CONNECTIONS.
3. WRAP AROUND STAINLESS STEEL SERVICE SADDLE SHALL BE USED ON ALL PIPE.
4. KB ROD TO BE ATTACHED TO CURB STOP WITH 9/64 X 4" BRASS COTTER PIN, NO SUBSTITUTIONS (MANUFACTURERS COTTER PIN SHALL NOT BE USED).
5. USE MUELLER CURB STOP NO. H15214 ORISEAL OR EQUAL.
6. THAW WIRE TO BE PLACED PARALLEL TO THE SERVICE LINE AND SHALL NOT COME IN CONTACT WITH THE SERVICE LINE AT ANY LOCATION.

MUNICIPALITY



OF ANCHORAGE

SCALE:
NTS

APPROVED:

REVISED:
10/07

**WATER SERVICE CONNECT
1-1/2" AND 2"**

SECTION #
60.06

DETAIL #
60-8

ABOVE GROUND IRRIGATION FACILITIES ENCLOSURE TO BE SIZED AS NECESSARY (SEE NOTE 6)

WATER METER (SEE NOTE 1)

BACKFLOW PREVENTER (SEE NOTES 2 & 3)

GATE VALVE

GATE VALVE

HOSE BIB

FINISHED GROUND SURFACE

12"

12"

12" MIN.
4' MAX.

PIPE SUPPORT ANCHORED TO BOX AND FLOOR (TYP.)

10' BURY (MIN.)

NO. 2 THAW WIRE (TYREK OR EQUAL)

CLASSIFIED NSF MAT'L. 95% DENSITY

VARIES

SERVICE KEY BOX

TYPE "K" COPPER

TYPE "K" COPPER



DRAIN HOLE

PEA GRAVEL W/ SAND
1/2 CUBIC YARD
(MIX 50-50)

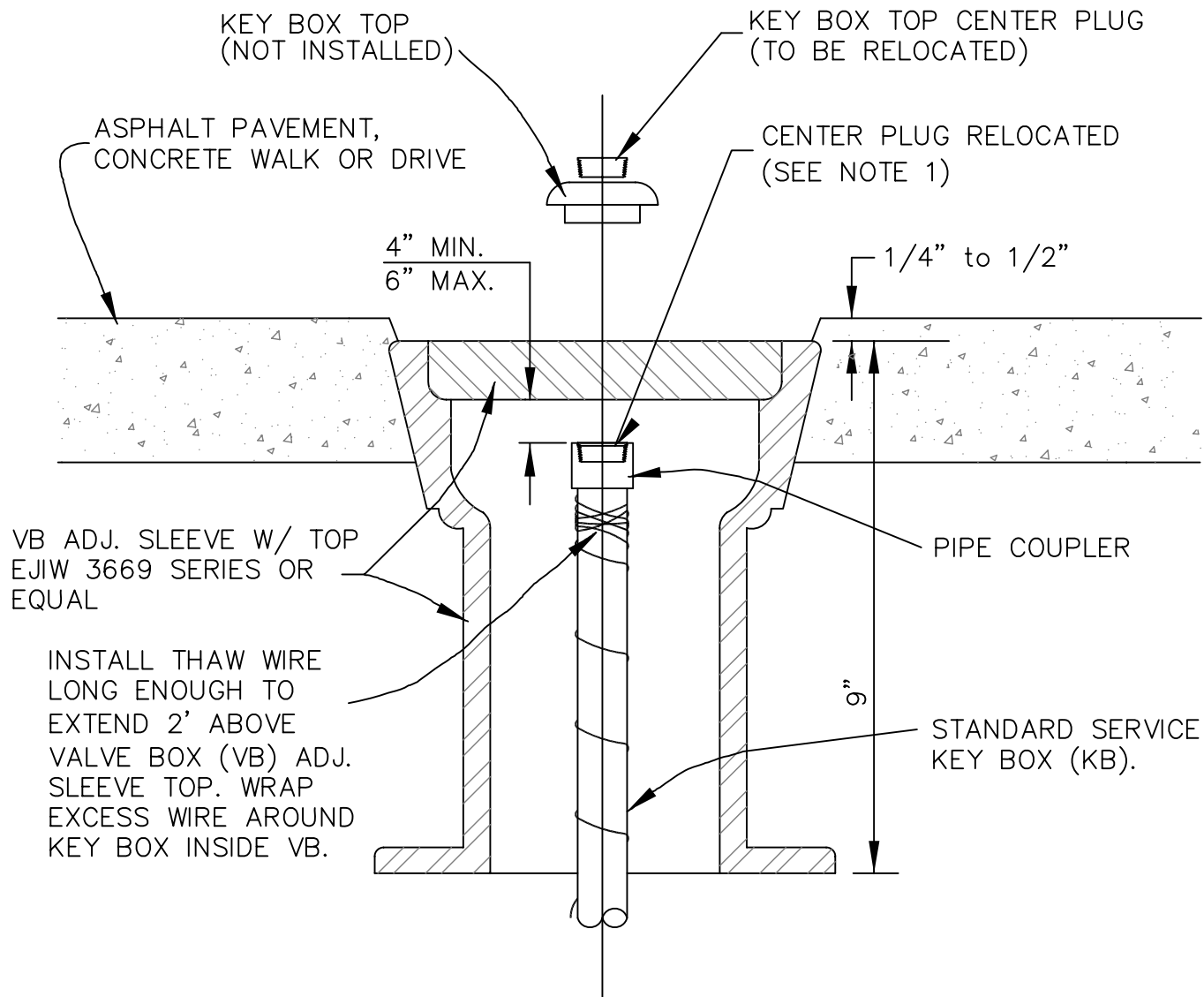
NOTES:

1. WATER METER TO BE FURNISHED AND INSPECTED BY AWWU (FIELD SERVICES).
2. ALL BACK FLOW PREVENTION DEVICES SHALL BE INSTALL IN ACCORDANCE WITH M.O.A. LOCAL AMENDMENT (23.25,603,0) TO THE 1994 UPC, CURRENT EDITION OF THE AWWU CROSS CONNECTION CONTROL MANUAL, AND THE MANUFACTURER'S RECOMMENDATIONS. ALL BACKFLOW DEVICES SHALL BE APPROVED BY M.O.A. IF LISTED BY THE U.S.C. FOUNDATION OF CROSS CONNECTION CONTROL AND HYDRAULIC RESEARCH.
3. A PERMIT AND INSPECTION SHALL BE REQUIRED BY THE MUNICIPALITY OF ANCHORAGE (M.O.A.) BUILDING SAFETY.
4. AWWU SHALL RECEIVE AN ENGINEERED SET OF PLANS TO BE REVIEWED AND APPROVED. PLANS SHALL INCLUDE WHO WILL PAY FOR THE WATER USAGE AND STORE METER.
5. REMOVE METER IN FALL TO PREVENT FREEZE-UP.

IRRIGATION FACILITIES ENCLOSURE

6. FOR SECURITY AND PROTECTION, IT IS RECOMMENDED THAT THE ENCLOSURE BE FABRICATED WITH 1-1/2" x 1-1/2" ANGLE IRON (FRAME) COVERED W/ FLAT EXPANDED METAL (MESH) PRIMED AND PAINTED. ENCLOSURE SHALL BE SIZED TO ENCLOSE ALL ABOVE FINISH GRADE APPURTENANCES AND SHALL PROVIDE ADEQUATE DRAINAGE TO KEEP THE BACKFLOW PREVENTER FROM BECOMING SUBMERGED.

<p>MUNICIPALITY</p>  <p>OF ANCHORAGE</p>	<p>SCALE: NTS</p> <p>APPROVED:</p> <p>REVISED: 10/07</p>	<p>IRRIGATION SYSTEM</p>	<p>SECTION # MISC.</p> <p>DETAIL # 60-9</p>
---	--	---------------------------------	---



NOTES:

1. REMOVE KEY BOX TOP AND INSTALL PIPE COUPLING ON STANDARD KEY BOX, REMOVE CENTER PLUG FROM KEY BOX TOP AND INSTALL INTO TOP OF PIPE COUPLER.
2. TYPICAL INSTALLATION WHEN KEY BOX FALLS WITHIN ASPHALT PAVEMENT, CONCRETE WALK OR DRIVEWAY.
3. TO BE INSTALLED AND APPROVED BY THE ENGINEER.
4. ALL BACKFILL MATERIAL AROUND VALVE BOX SHALL BE NFS AND COMPACTED TO 95% MAX. DENSITY.

MUNICIPALITY

 OF ANCHORAGE

SCALE:
NTS
 APPROVED:
 REVISED:
11/08

ADJUST SERVICE KEY BOX

SECTION #
60.19
 DETAIL #
60-14