

Date of Action: 2.9.15	
Approved <input checked="" type="checkbox"/>	Denied <input type="checkbox"/>
By: <i>[Signature]</i>	

CITY COUNCIL ACTION MEMORANDUM

AM No. 15-07: Contract Amendment to Aquarius Systems in the amount of \$35,225 for a Shore Conveyor to support the new Aquatic Plant Harvester for Lake Lucile.

Originator: Public Works Director

Date: January 28, 2015

Agenda of: February 9, 2015

Route to:	Department Head	Signature	Date
X	Public Works Director	<i>[Signature]</i>	1/28/15
X	Finance Director	<i>[Signature]</i>	1/28/15
X	Deputy Administrator	<i>[Signature]</i>	1/28/15
X	City Clerk	<i>[Signature]</i>	1.28.15

Reviewed by Mayor Bert L. Cottle: *[Signature]* 01:28:2015

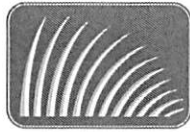
Fiscal Impact: yes \$35,225 **Funds Available:** yes

Account name/number: Lake Lucile WQ State/110-4520-452-45-51 \$32,160
 Lake Lucile WQ City/110-4520-452-45-48 \$3,065

Attachments: Shore Conveyor Details (5 pages)

Summary Statement: This contract amendment is proposed to purchase a shore conveyor that will provide a more efficient means of loading harvested plants into a dump truck. The alternative is to use a loader that is slower and has a greater chance of disturbing the shoreline. There is \$32,160 available from a State Grant to apply towards the purchase. The aquatic plant harvester purchase was authorized by AM No. 14-46 in the amount of \$174,800 from Aquarius Systems in December and it has been ordered. The proposed shore conveyor is designed to work directly with the harvester.

Staff Recommendation: Adopt AM No. 15-07.



**CITY OF WASILLA
WASILLA, ALASKA
EQUIPMENT CONTRACT**

Proposal Number: 122314.02

QUANTITY	DESCRIPTION	PRICE EACH*
1	820 Series Aquatic Plant Harvester	Included
	Kubota V3600-T-E3B Diesel Engine	Included
	Extra-large Bimini Sun/Rain Canopy	Included
	Standard Duty Galvanized Conveyor Belting	Included
	Environmental Marine Safe Hydraulic Oil & Grease	Included
	Permanent Fuel Tank, 28 gallon Capacity	Included
	Aquarius Blue Color Scheme	Included
	Alternate Color Scheme, Please State at Time of Order: _____	No Charge
	Standard Spare Parts & Tool Kits	Included
1	TR-34 Yard Trailer	Included
	12,000 lb. Electric Winch on Trailer	Included
~	Sub-Total (Harvester + Trailer)	\$174,800.00
~	Harvester Options	
	Jib Crane	\$1,850.00
	Hydraulically Retractable Paddle Wheels	\$7,500.00
	Central Greasing System	\$3,850.00
	Navigational Lights	\$875.00
	Portable Wash Down Pump	\$2,125.00
	Passenger Seat	\$390.00
1	SC-34 Shore Conveyor	\$35,225.00

Contract Number	122314.02
Company's Initials	TAW
Date	31 Dec 2014
Page Number	1 of 1

shore conveyors



Shore Conveyors are deployed at the waters edge and serve the harvesters, transport barges and trash skimmers as an unloading link between land and water.

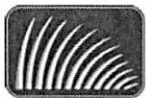
Standard Shore Conveyors are equipped with hydraulic quick disconnect hoses to draw power from the harvester, transport or trash skimmer as it unloads. As an alternative, Shore Conveyors can be self-powered via a gasoline or diesel power pack. An optional vandal proof enclosure is available to secure the engine and hydraulics.

Shore Conveyors are easily pulled by a full sized pickup truck, and feature integrated D.O.T. compliant lighting, a heavy duty towing hitch and safety chains, wheel fenders and chocks, manual height adjustment and a removable auxiliary positioning hitch.



PO Box 215 | 200 N Harrison Street | North Prairie | Wisconsin | 53153 USA
| P 262-392-2162 | T 800-328-6555 | F 262-392-2984
info@aquarius-systems.com | www.aquarius-systems.com

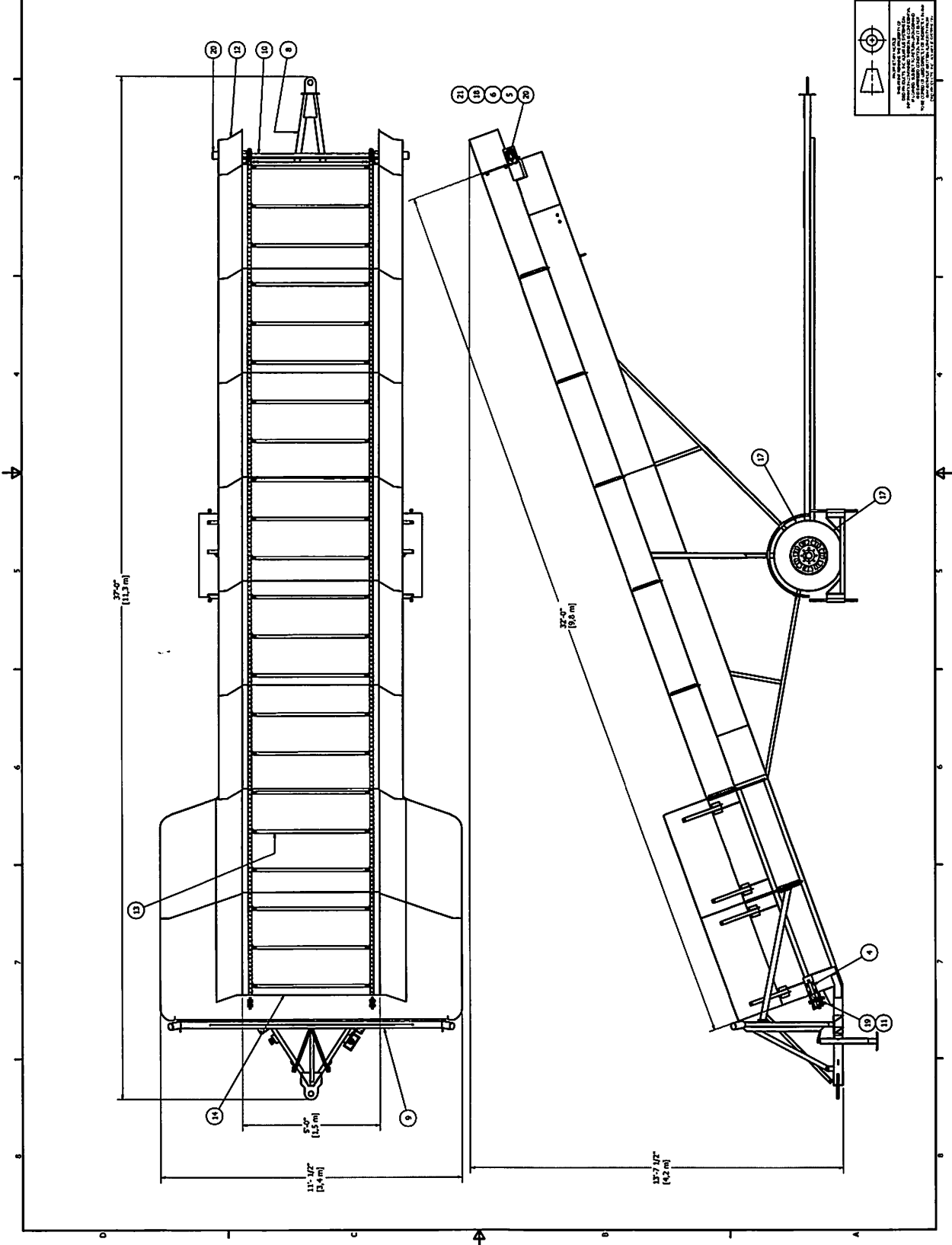
shore conveyors



**AQUARIUS
SYSTEMS**
A Division of D&D Products Inc.

PO Box 215 | 200 N Harrison Street | North Prairie | Wisconsin | 53153 USA
| P 262-392-2162 | T 800-328-6555 | F 262-392-2984
info@aquarius-systems.com | www.aquarius-systems.com

ITEM	QTY	TITLE	PART NUMBER
3	2	WHEEL CHOCKS	0355
4	2	TAKE-UP ASSEMBLY	0566
5	2	BRACKET - HYDRAULIC MOTOR	0679
6	2	GUARD - CHAIN COUPLING	0688
7	1	HAULT CONVEYOR FRAME	2001
8	1	FLANGE - DRIVE SHAFT	2285
9	1	KEYWAY - DRIVE SHAFT	2285
10	1	DRIVE SHAFT	2288
11	1	ROLLER SHAFT	2289
12	2	REAR FLANGES	2375
13	1	CONVEYOR FLIGHTS & CHAIN	2376
14	1	FLANGE RETAINING PLATE	2400
15	2	WHEEL	PH-141
16	2	FLANGE BEARING - 2 BOLT, 1.7/16" ID	PH-148
17	2	FLANGE BEARING	PH-148
18	2	DRIVE MOTOR	PH-147
20	2	CHAIN COUPLING ASSEMBLY	PH-204-100
21	1	HAND JACK, 5000 LBS	PJ-174
22	1	WHEEL WELDMENT - SC-245PL	2889
23	1	WHEEL WELDMENT - SC-245PL	2889
24	2	WHEEL WELDMENT - SC-245PL	2889
25	2	WHEEL WELDMENT - SC-245PL	2889
26	2	WHEEL WELDMENT - SC-245PL	2889
27	2	WHEEL WELDMENT - SC-245PL	2889
28	2	WHEEL WELDMENT - SC-245PL	2889
29	2	WHEEL WELDMENT - SC-245PL	2889
30	2	WHEEL WELDMENT - SC-245PL	2889
31	2	WHEEL WELDMENT - SC-245PL	2889
32	2	WHEEL WELDMENT - SC-245PL	2889
33	2	WHEEL WELDMENT - SC-245PL	2889
34	2	WHEEL WELDMENT - SC-245PL	2889
35	2	WHEEL WELDMENT - SC-245PL	2889
36	2	WHEEL WELDMENT - SC-245PL	2889
37	2	WHEEL WELDMENT - SC-245PL	2889
38	2	WHEEL WELDMENT - SC-245PL	2889
39	2	WHEEL WELDMENT - SC-245PL	2889
40	2	CONVEYOR & PIVOT PIN	3034



DESIGNED WITHOUT HYD. POWERPACK

AQUARIUS SYSTEMS

MASTERVIEW

SC-34

REV D

REV C

REV B

REV A

REV 1

REV 2

REV 3

REV 4

REV 5

REV 6

REV 7

REV 8

REV 9

REV 10

REV 11

REV 12

REV 13

REV 14

REV 15

REV 16

REV 17

REV 18

REV 19

REV 20

REV 21

REV 22

REV 23

REV 24

REV 25

REV 26

REV 27

REV 28

REV 29

REV 30

REV 31

REV 32

REV 33

REV 34

REV 35

REV 36

REV 37

REV 38

REV 39

REV 40

REV 41

REV 42

REV 43

REV 44

REV 45

REV 46

REV 47

REV 48

REV 49

REV 50

REV 51

REV 52

REV 53

REV 54

REV 55

REV 56

REV 57

REV 58

REV 59

REV 60

REV 61

REV 62

REV 63

REV 64

REV 65

REV 66

REV 67

REV 68

REV 69

REV 70

REV 71

REV 72

REV 73

REV 74

REV 75

REV 76

REV 77

REV 78

REV 79

REV 80

REV 81

REV 82

REV 83

REV 84

REV 85

REV 86

REV 87

REV 88

REV 89

REV 90

REV 91

REV 92

REV 93

REV 94

REV 95

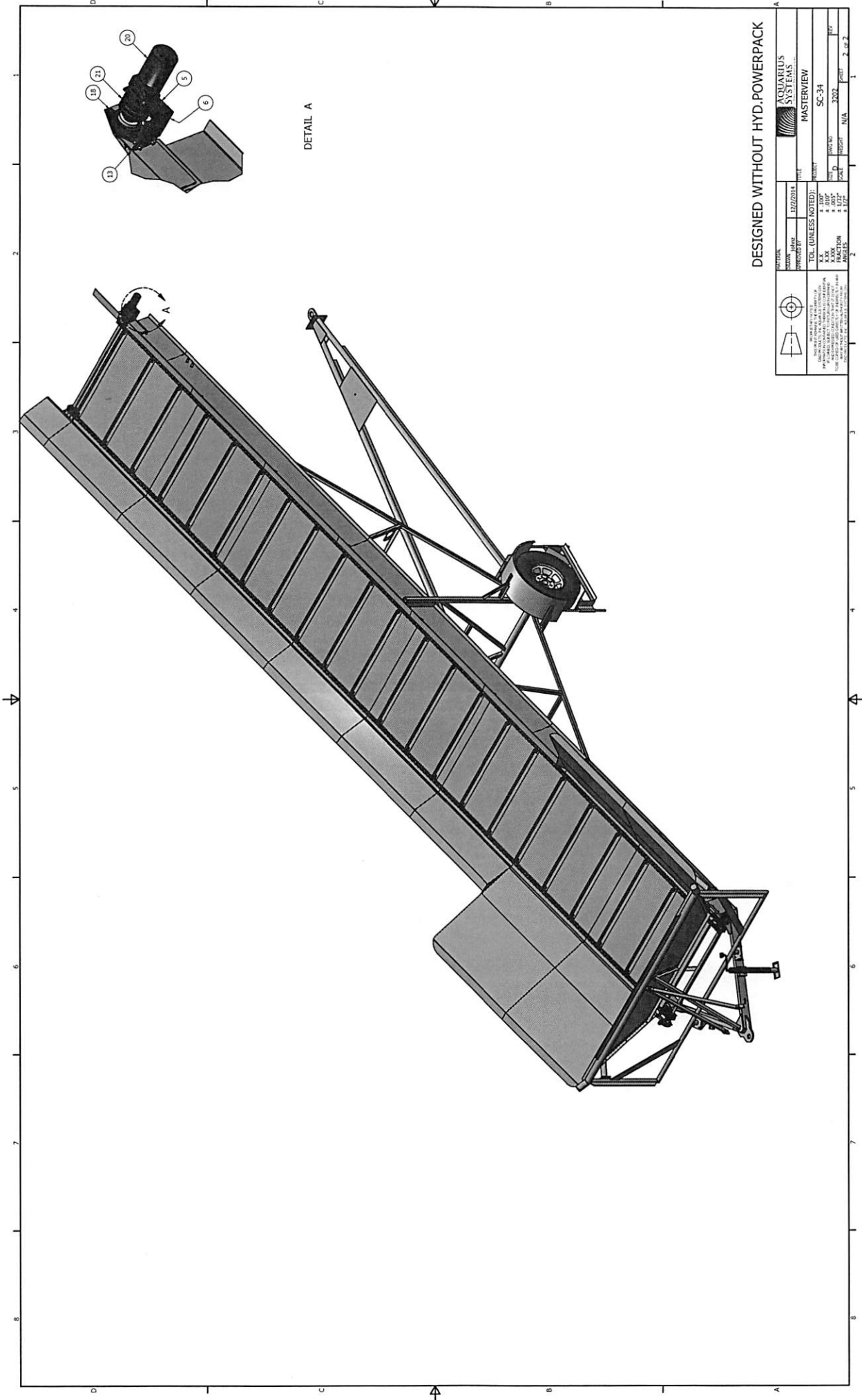
REV 96

REV 97

REV 98

REV 99

REV 100



DETAIL A

DESIGNED WITHOUT HYD. POWERPACK

		AQUARIUS SYSTEMS	
TITLE MASTERVIEW		MODEL NO. SC-34	
SERIAL NO. 3202		DATE 1/77	
DRAWN BY N/A		CHECKED BY 2 of 2	
TOL. (UNLESS NOTED): FRACTIONS # 1/3200+ DECIMALS # .0005 ANGLES # .0005 DIMENSIONS # .0005 HOLE DIA. # .0005 HOLE DIA. # .0005 HOLE DIA. # .0005			
NOTES: 1. SEE DRAWING FOR DIMENSIONS. 2. ALL DIMENSIONS ARE TO CENTER UNLESS OTHERWISE SPECIFIED. 3. ALL DIMENSIONS ARE TO CENTER UNLESS OTHERWISE SPECIFIED. 4. ALL DIMENSIONS ARE TO CENTER UNLESS OTHERWISE SPECIFIED.			