

16.04.070 Definitions.

When used in this title, the following words and phrases shall have the meanings set forth in this section:

“**Farm animal**” means an accessory use involving a single animal with an adult weight over two hundred fifty (250) pounds usually associated with agriculture; or any combination totaling ten (10) poultry or rabbits, three sheep or three goats or other small animals; but not including domestic dogs and cats. Other animals including the orders Felidae (cats) and Ursidae (bears) which, in the opinion of the planner, may pose a threat to human safety are not a farm animal.

16.16.060 Specific approval criteria.

The following uses are subject to the preceding general criteria and these additional approval standards:

- E. **Farm Animals.** Farm animals are allowed as an accessory use to agriculture in the industrial zone. In the rural residential and single-family residential farm animal(s) may be allowed as described in the following.
1. A residential use in the RR, R1 or R2 district with a total lot area of forty thousand (40,000) square feet or more may include the keeping of one farm animal as an accessory use, provided that a suitable fence is provided and no stable or building used for farm animals may be closer than twenty-five (25) feet from any exterior lot line. Two farm animals may be kept provided that a site plan is approved by the planner.
 2. A residential use in the RR, R1 or R2 district may include the keeping of three or more farm animals if all of the above is met and the total lot area is eighty thousand (80,000) square feet or more.
 3. Up to three dogs are allowed per residence. Keeping of more than three dogs more than four months of age is a kennel (see kennel in use chart).
 4. No more than four hives per ten thousand (10,000) square feet of lot area shall be allowed and bee colonies shall be managed in such a manner that their flight path to and from the hive will not bring them into contact with people on adjacent property. To accomplish this, the colonies shall:
 - a. Be at least twenty-five (25) feet from any exterior lot line not in common ownership and be oriented with entrances facing away from adjacent property; or
 - b. Be placed behind a fence at least six feet in height and extending at least ten (10) feet beyond the hive in both directions.

PAGE

INTENTIONALLY

LEFT

BLANK

Tina Crawford

From: Archie Giddings
Sent: Wednesday, June 24, 2015 4:55 PM
To: Tina Crawford
Subject: mayor on board

Follow Up Flag: Follow up
Flag Status: Flagged

Categories: Red Category

With min house size around 1,000 sqft. I suggest 1,008 sqft = 24x42 and 36x28 which are good building sizes.

PAGE

INTENTIONALLY

LEFT

BLANK



Custom Detached 4-Plex



120216 Split 4-plex.jpg

1 / 9

New concept in Multifamily building.



©2008 bylercontracting

MASTER PLAN #20

915 SQ. FT.

Issued For Construction

Living Area = 915 sq. ft.
Garage Area = 310 sq. ft.

Accepted As Drawn By:

(Builder) X

(Buyer) X

Dennis Byler
Byler Contracting
P.O. Box 877750
Wasilla, AK, 99687
Ph: (907) 357-3073
Fax: (907) 357-3061
Email: dennis@bylercontracting.com

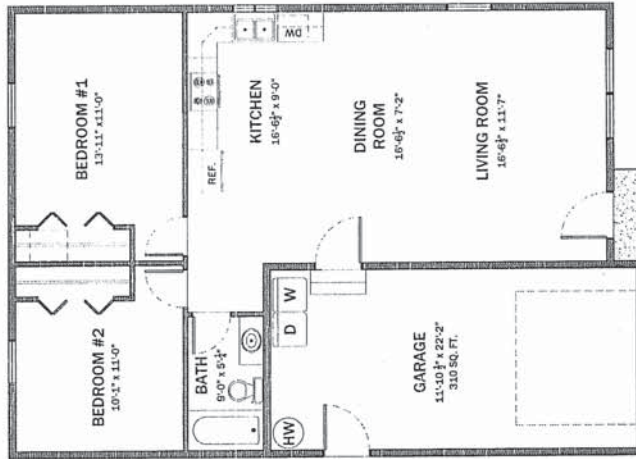
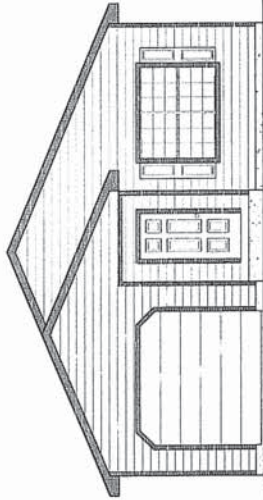


EXHIBIT E



TUMBLEWEED[®]

TINY HOUSE COMPANY

TUMBLEWEED CATALOG 2015



TABLE OF CONTENTS

House-To-Gos™	3
Cypress™ Overview	4
Cypress™ 18 Equator	5
Cypress™ 18 Overlook	6
Cypress™ 20 Arise	7
Cypress™ 20 Equator	8
Cypress™ 20 Horizon	9
Cypress™ 20 Overlook	10
Cypress™ 24 Equator	11
Cypress™ 24 Horizon	12
Cypress™ 24 Overlook	13
Cypress™ 24 Vantage	14
Elm™ Overview	15
Elm™ 18 Equator	16
Elm™ 18 Overlook	17
Elm™ 20 Equator	18
Elm™ 20 Horizon	19
Elm™ 20 Overlook	20
Elm™ 24 Equator	21
Elm™ 24 Horizon	22
Elm™ 24 Overlook	23
Elm™ 24 Vantage	24
Linden™ Overview	25
Linden™ 20 Equator	26
Linden™ 20 Horizon	27
Linden™ 20 Overlook	28
Mica™ Overview	29
Mica™ 20 Clear	30
Equator Options	31
Horizon Options	32
Overlook Options	33
Vantage Options	34
Towing	35
Products	36
Workshops	37

Please reach us with your questions and comments anytime. We'll be listening at support@tumbleweedhouses.com.


TUMBLEWEED TINY HOUSE COMPANY®

Our tiny homes are carefully crafted and made from the same high quality materials that you'd find in a regular home. We've perfected our design for 15 years, and we care about each and every one of our homes and the people residing in them.

WHERE CAN I PUT IT?

Our House-to-Gos™ are RVIA certified, which means they can be parked at a RV park or campground. Many Tumbleweed owners use their homes as additional spaces and place them in their backyards or properties.

WHY WHEELS?

During the 1960s building codes were established that required households to meet a certain size and, in doing so, required citizens to live in larger and larger homes. By placing our tiny homes on trailers they are considered recreational trailers and are not restricted by these same laws.

IS FINANCING AVAILABLE?

Yes. Tumbleweed's can be financed using RV loans. Some banks and most credit unions have RV financing; local credit unions generally offer the best rates and terms.

CAN I GET IT DELIVERED?

Ready-made House-to-Gos™ can be delivered right to your front door, anywhere in the United States. Delivery can take 8-10 weeks from the moment you place your order.


**LETTER FROM THE PRESIDENT,
STEVE WEISSMANN**

It has been a joy connecting with the tiny home community, while designing and enhancing our tiny houses for you. We hope our catalog of Houses-To-Gos™, which are RV certified, live up to your dreams and practical expectations.



HOUSE-TO-GO™ MODELS

With wheels, traditional proportioning and archetypal form, these little structures are designed to be portable and can, essentially, be sited anywhere you can park a travel trailer. They range from about 117 to 172 sq ft. Purchase your Ready-made or buy the plans to build it yourself.



CYPRESS™

House Lengths: 18' / 20' / 24'
Floor Plan Options: 10



ELM™

House Lengths: 18' / 20' / 24'
Floor Plan Options: 9



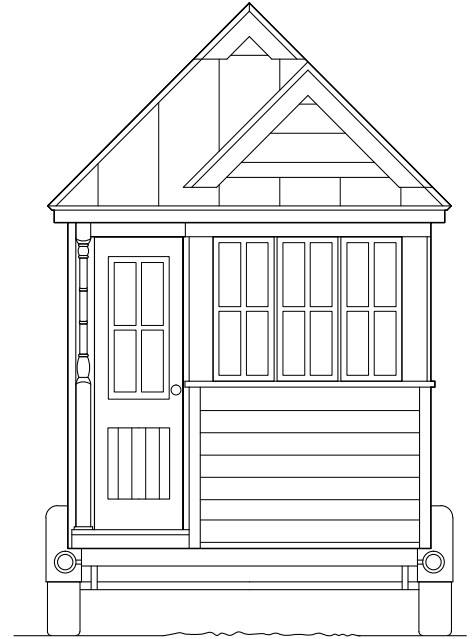
LINDEN™

House Length: 20'
Floor Plan Options: 3



MICA™

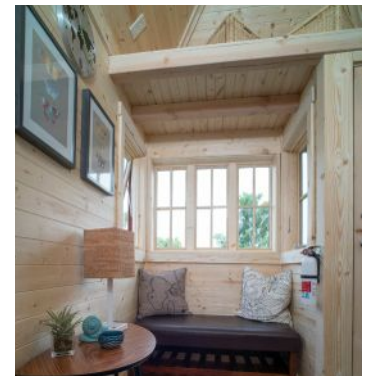
House Length: 20'
Floor Plan Options: 1



CYPRESS™ MODEL

The Cypress™ design makes use of the most interior space, by incorporating a corner porch and utilizing the extra room as interior space. The rhythm of the design and depth, from its recessed porch and hipped roof, offer an aesthetic that had led to the overwhelming popularity of this design.

SPECS	
House Width	7'6"
House Lengths	18' / 20' / 24'
Ceiling Height	6'6"
Loft Height	3'6"
Dry Weight	8,000-10,500
GVWR	9,990-15,000
Truck Size	¾ to 1 Ton



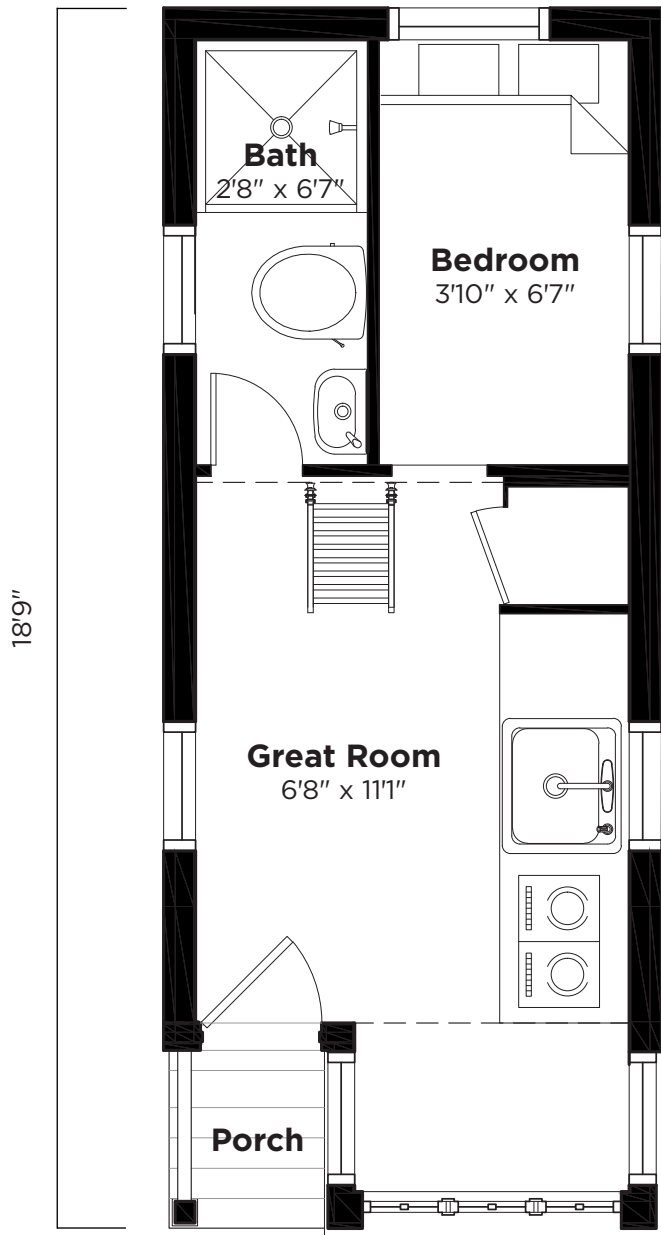
*Models shown with optional features

CYPRESS™ 18—EQUATOR

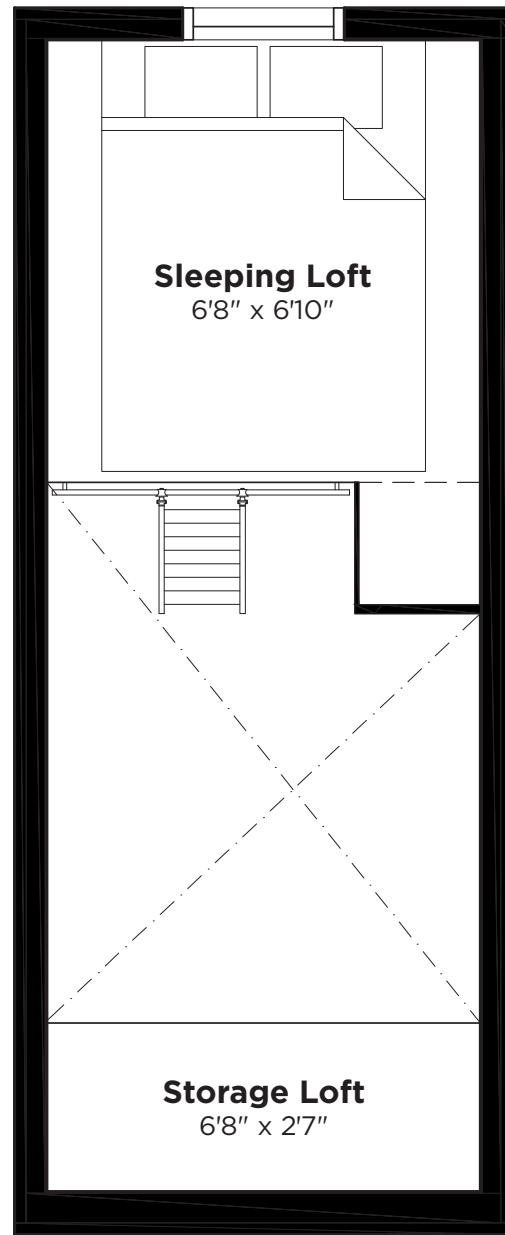


Square Footage 130 sq ft + 46 Loft
Dry Weight 8,000lbs
Sleeping Arrangement Downstairs Twin Bedroom and Queen Size sleeping loft.

\$57,000 Ready-made: \$385/mo, 20% down, 6% APR, 15 year loan
 \$433/mo, 10% down, 6% APR, 15 year loan
 *Measurements Approximate



First Floor Layout



Loft Layout

CYPRESS™ 18—OVERLOOK



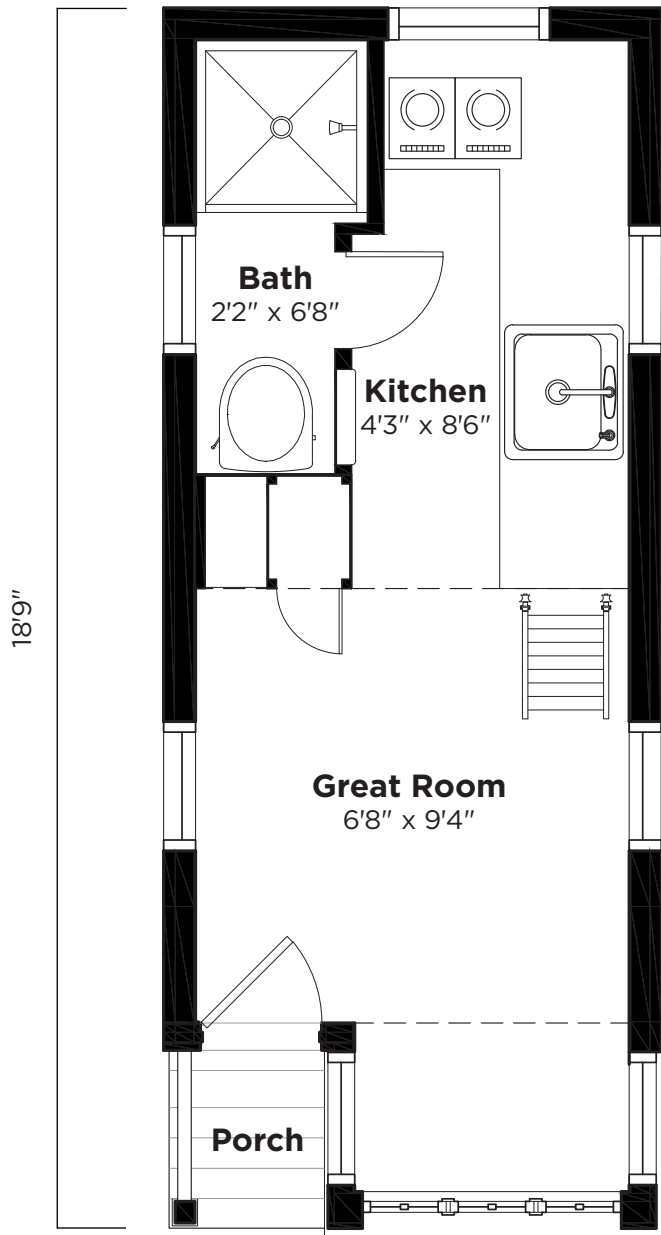
Square Footage
130 sq ft + 57 Loft

Dry Weight
8,000lbs

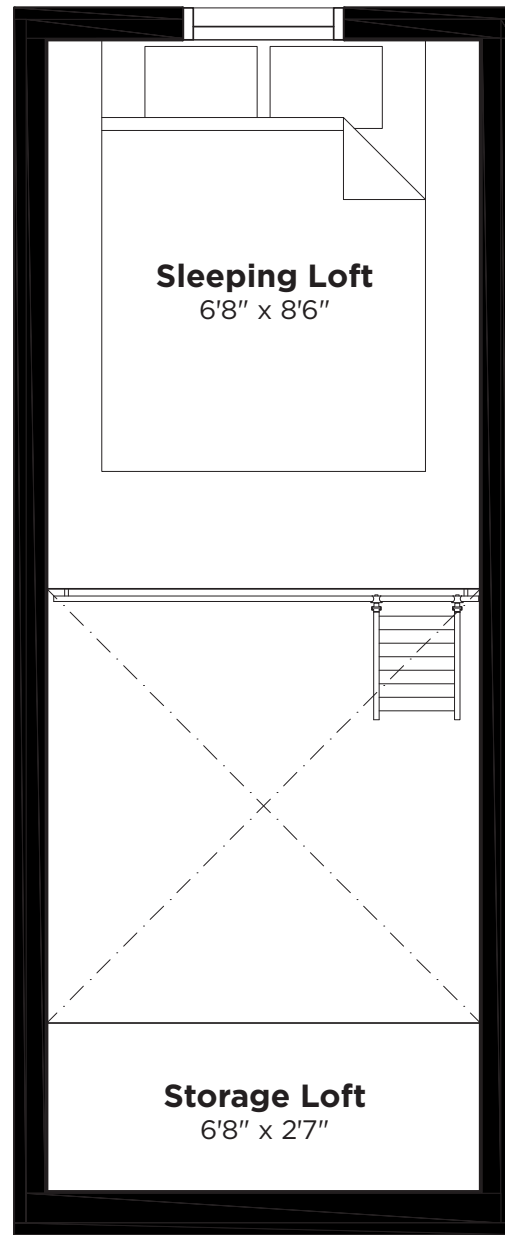
Sleeping Arrangement
Queen Size sleeping loft.

\$57,000 Ready-made: \$385/mo, 20% down, 6% APR, 15 year loan
\$433/mo, 10% down, 6% APR, 15 year loan

*Measurements Approximate



First Floor Layout



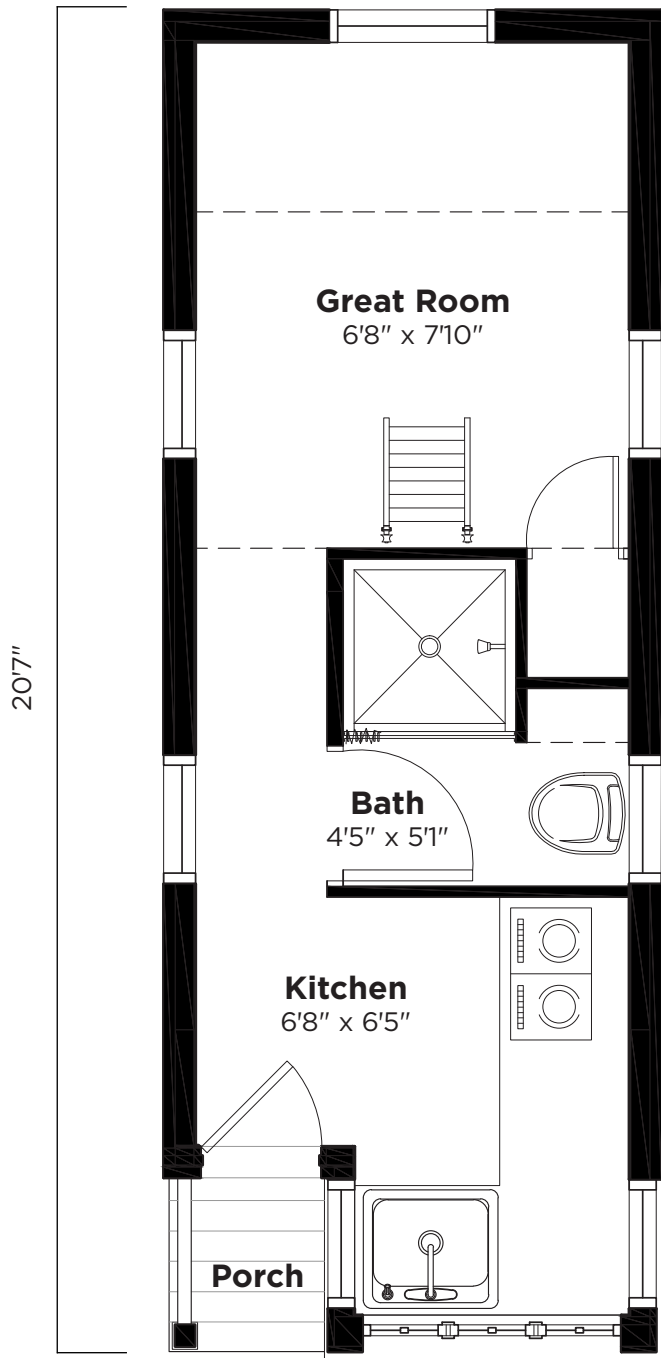
Loft Layout

CYPRESS™ 20—ARISE

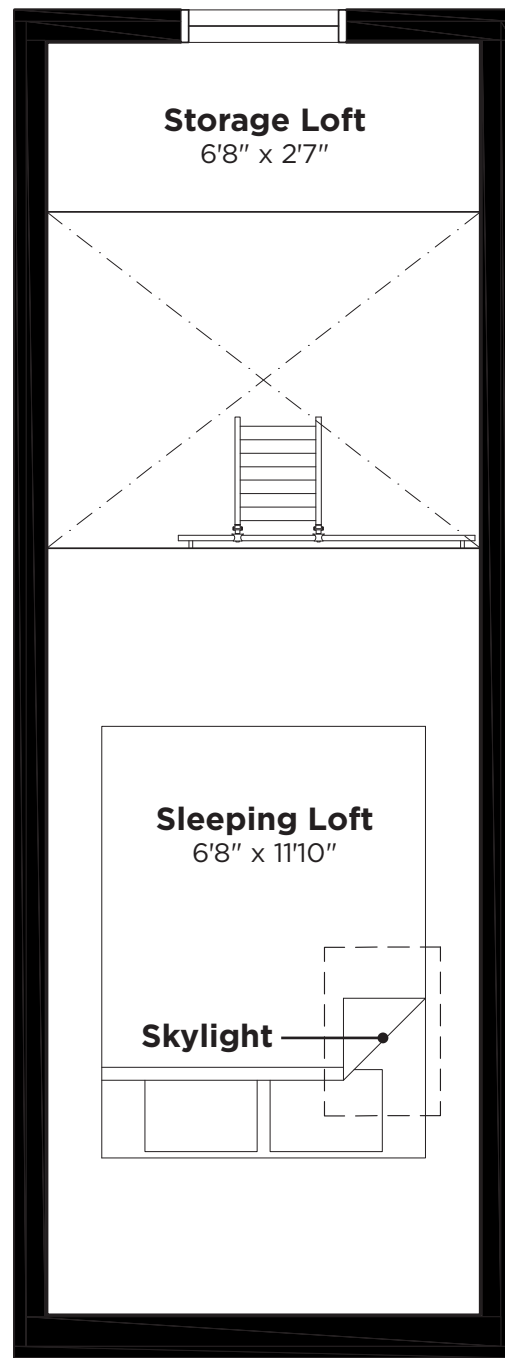


Square Footage 144 sq ft + 79 Loft **Dry Weight** 8,800lbs **Sleeping Arrangement** Downstairs Murphy Bed Option and Queen Size sleeping loft.

\$60,000 Ready-made: \$406/mo, 20% down, 6% APR, 15 year loan *Measurements Approximate
 \$456/mo, 10% down, 6% APR, 15 year loan



First Floor Layout



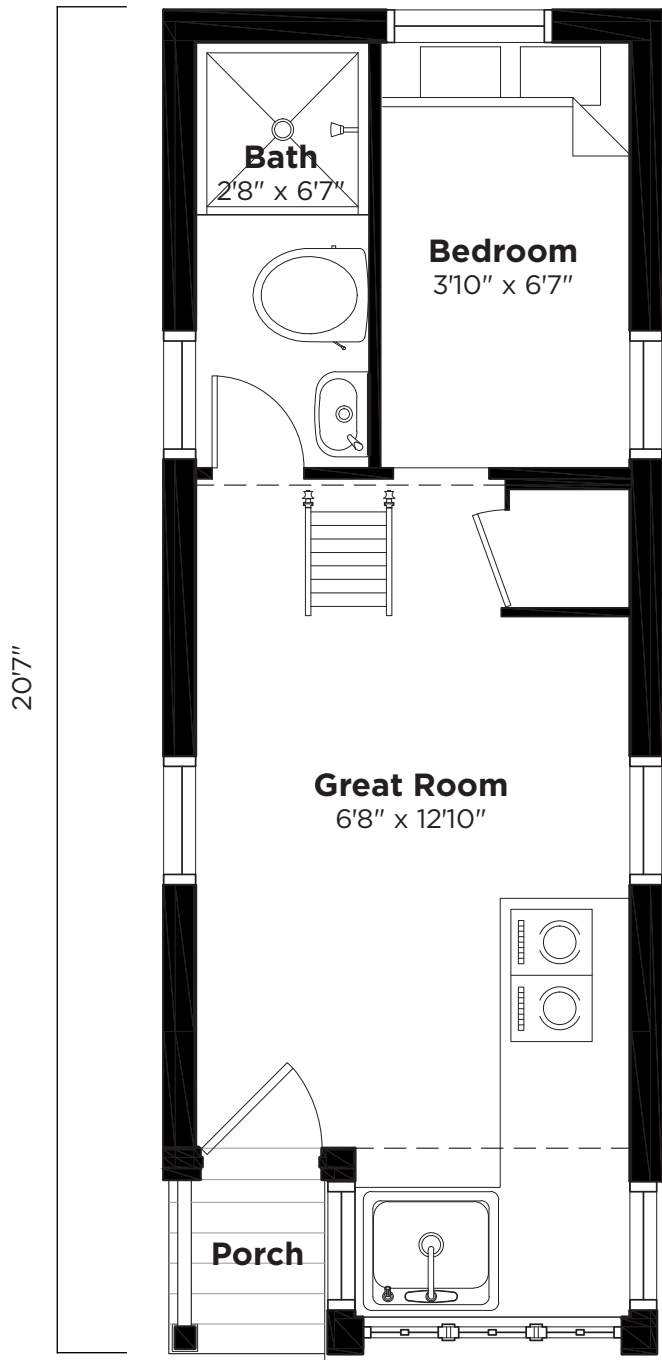
Loft Layout

CYPRESS™ 20—EQUATOR

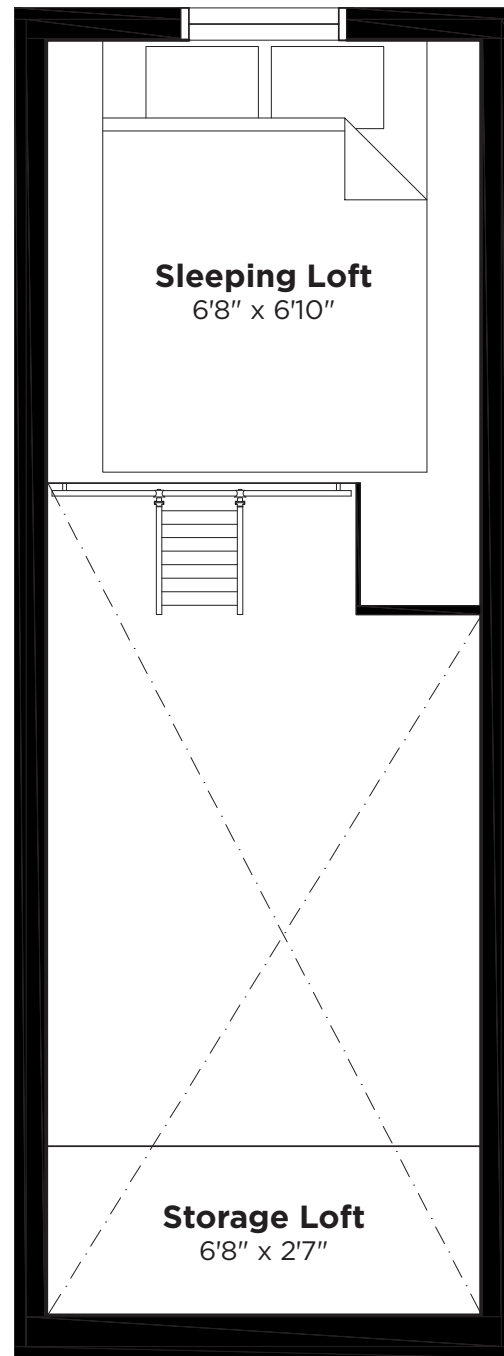


Square Footage 144 sq ft + 46 Loft
Dry Weight 8,800lbs
Sleeping Arrangement Downstairs Twin Bedroom and Queen Size sleeping loft.

\$60,000 Ready-made: \$406/mo, 20% down, 6% APR, 15 year loan *Measurements Approximate
 \$456/mo, 10% down, 6% APR, 15 year loan



First Floor Layout



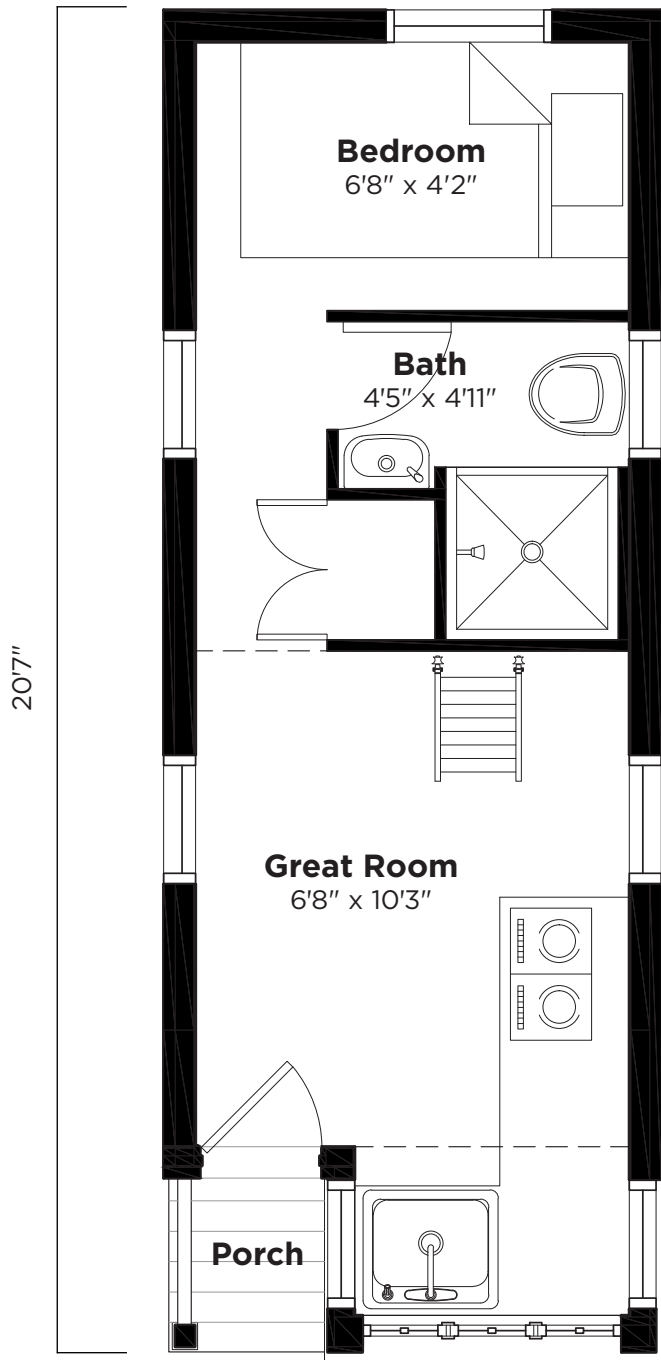
Loft Layout

CYPRESS™ 20—HORIZON

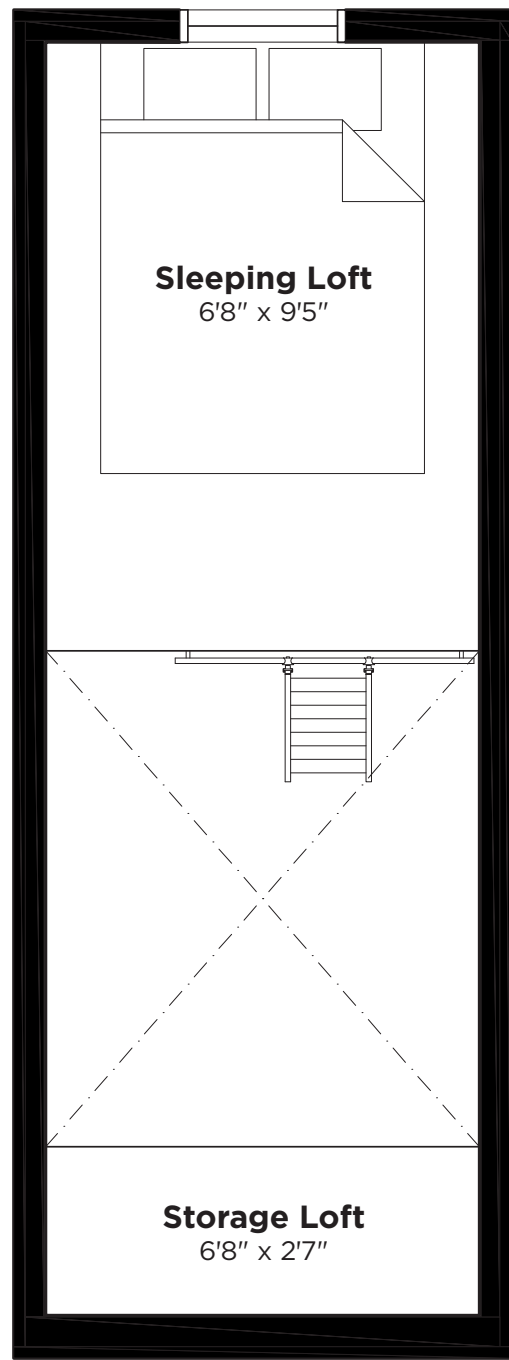


Square Footage 144 sq ft + 63 Loft
Dry Weight 8,800lbs
Sleeping Arrangement Downstairs Twin Bedroom and Queen Size sleeping loft.

\$60,000 Ready-made: \$406/mo, 20% down, 6% APR, 15 year loan *Measurements Approximate
 \$456/mo, 10% down, 6% APR, 15 year loan



First Floor Layout



Loft Layout

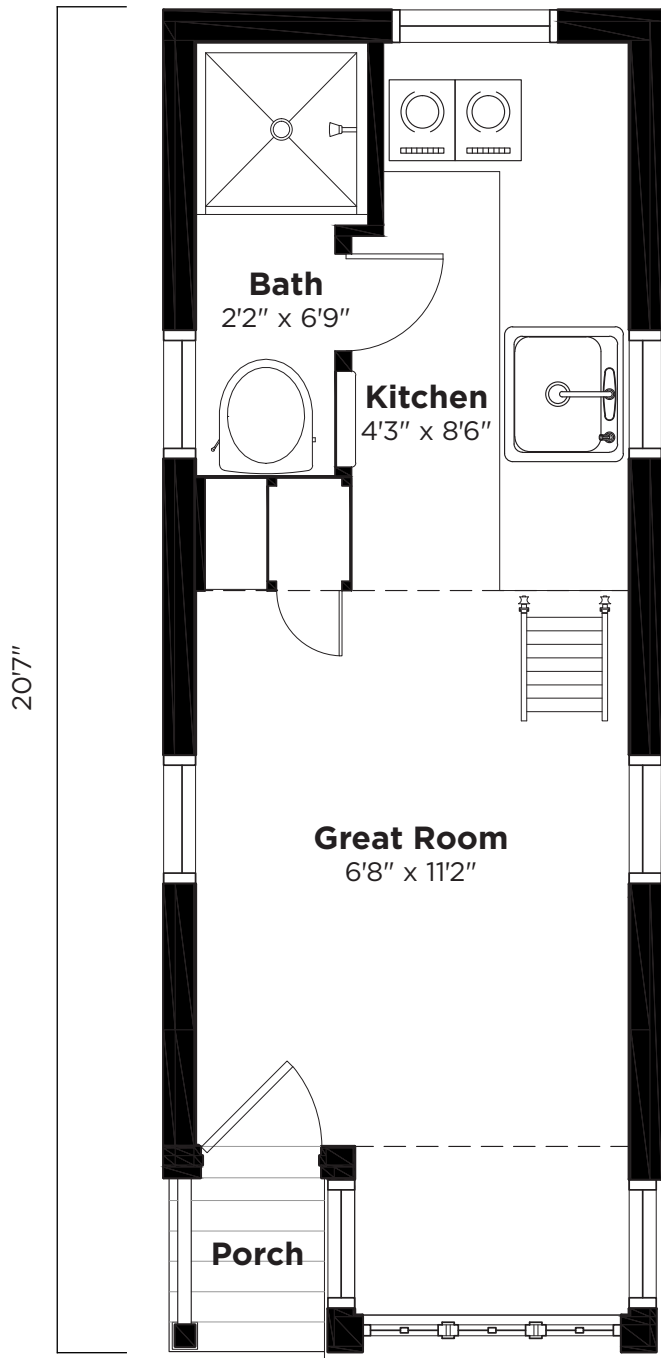
CYPRESS™ 20—OVERLOOK



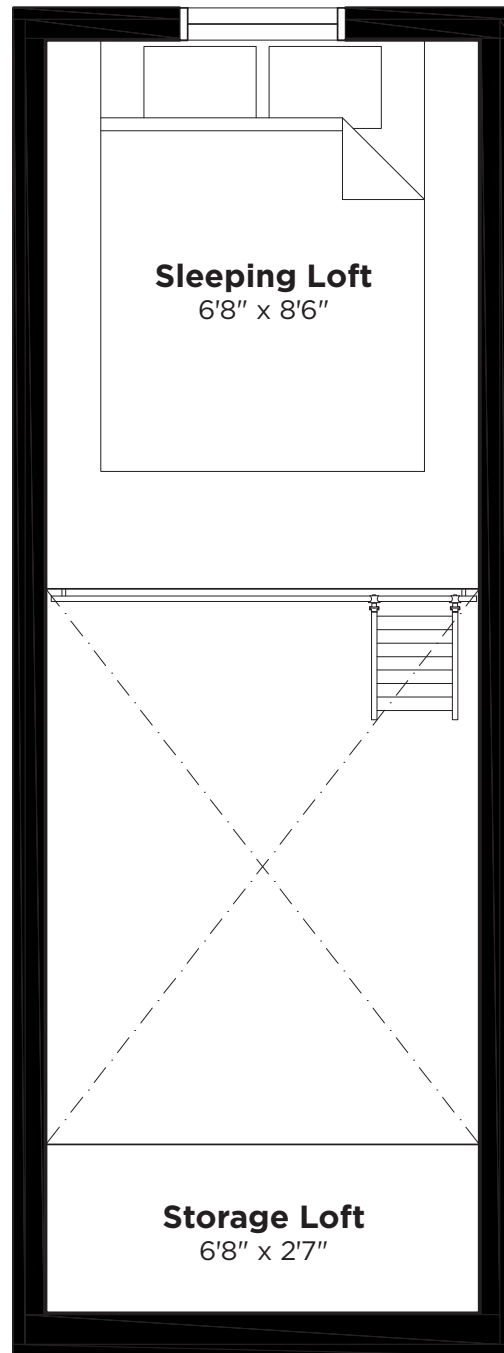
Square Footage 144 sq ft + 44 Loft
Dry Weight 8,800lbs
Sleeping Arrangement Queen Size sleeping loft.

\$60,000 Ready-made: \$406/mo, 20% down, 6% APR, 15 year loan
 \$456/mo, 10% down, 6% APR, 15 year loan

*Measurements Approximate



First Floor Layout



Loft Layout

CYPRESS™ 24—EQUATOR



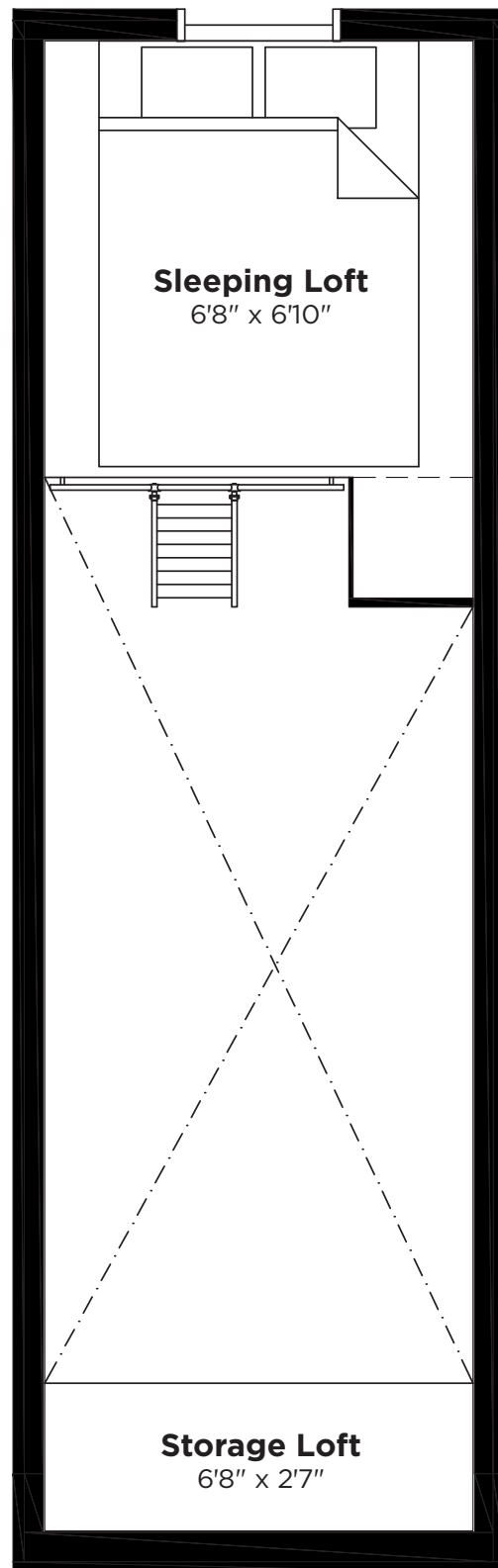
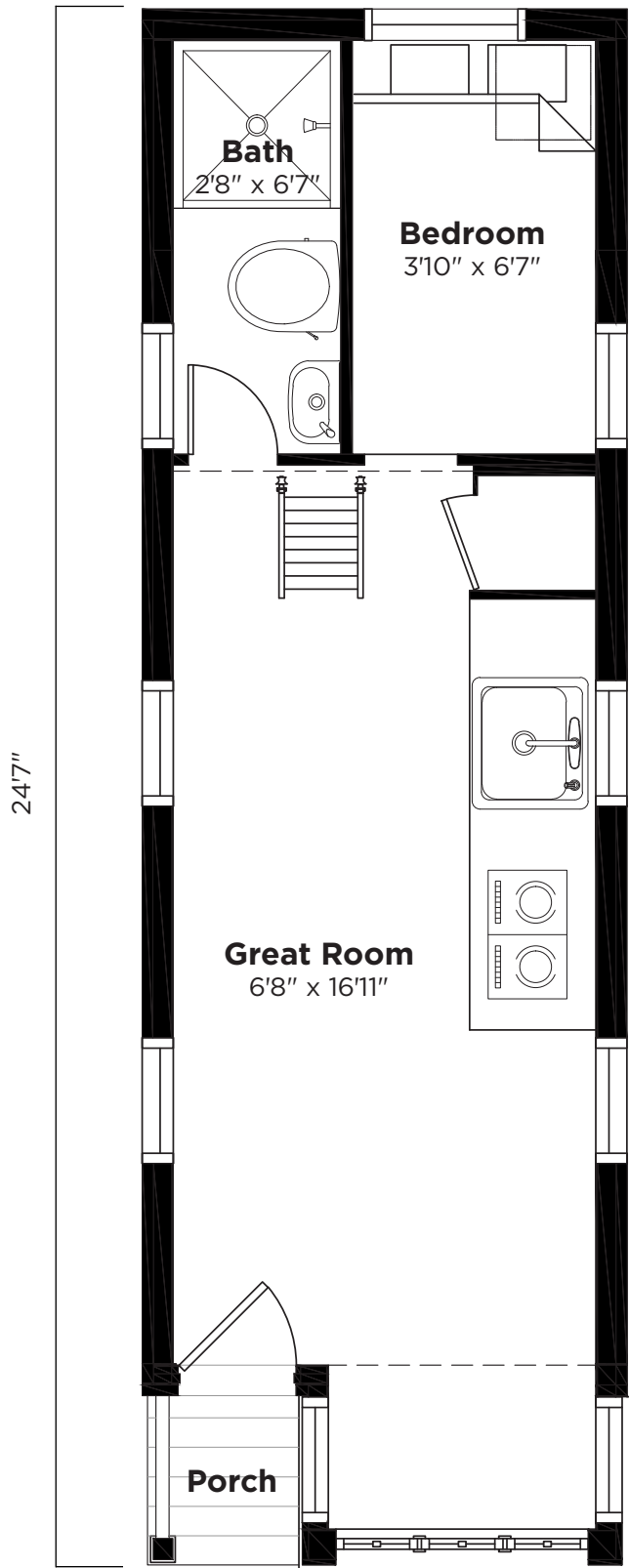
Square Footage
172 sq ft + 46 Loft

Dry Weight
10,500lbs

Sleeping Arrangement
Downstairs Twin Bedroom and Queen Size sleeping loft.

\$66,000 Ready-made: \$446/mo, 20% down, 6% APR, 15 year loan
\$502/mo, 10% down, 6% APR, 15 year loan

*Measurements Approximate



CYPRESS™ 24—HORIZON



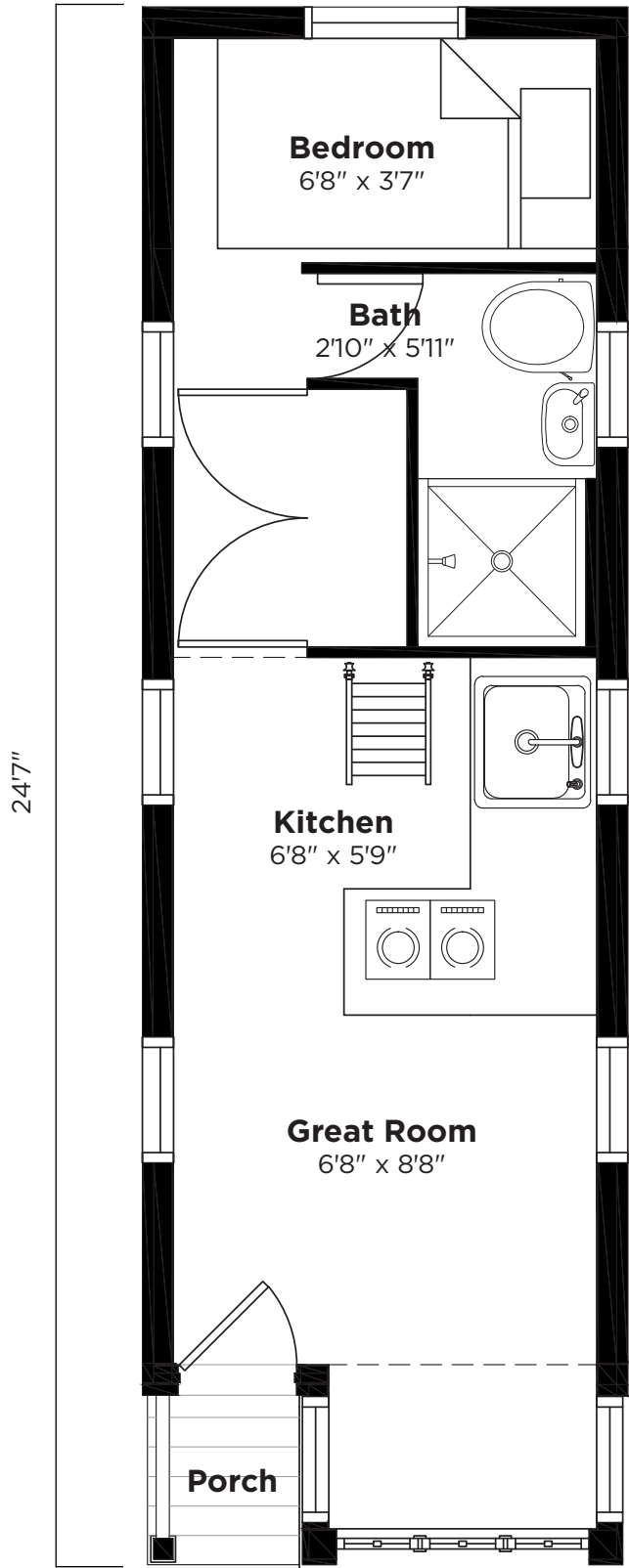
Square Footage
172 sq ft + 66 Loft

Dry Weight
10,500lbs

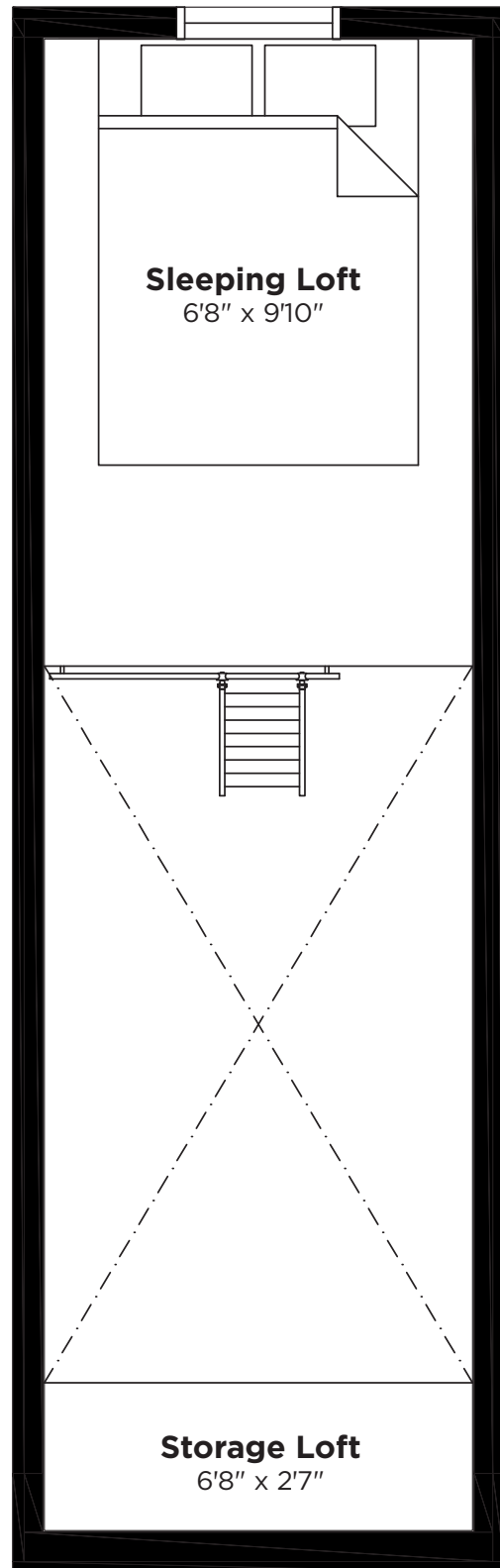
Sleeping Arrangement
Downstairs Twin Bedroom and Queen Size sleeping loft.

\$66,000 Ready-made: \$446/mo, 20% down, 6% APR, 15 year loan
\$502/mo, 10% down, 6% APR, 15 year loan

*Measurements Approximate



First Floor Layout



Loft Layout

CYPRESS™ 24—OVERLOOK



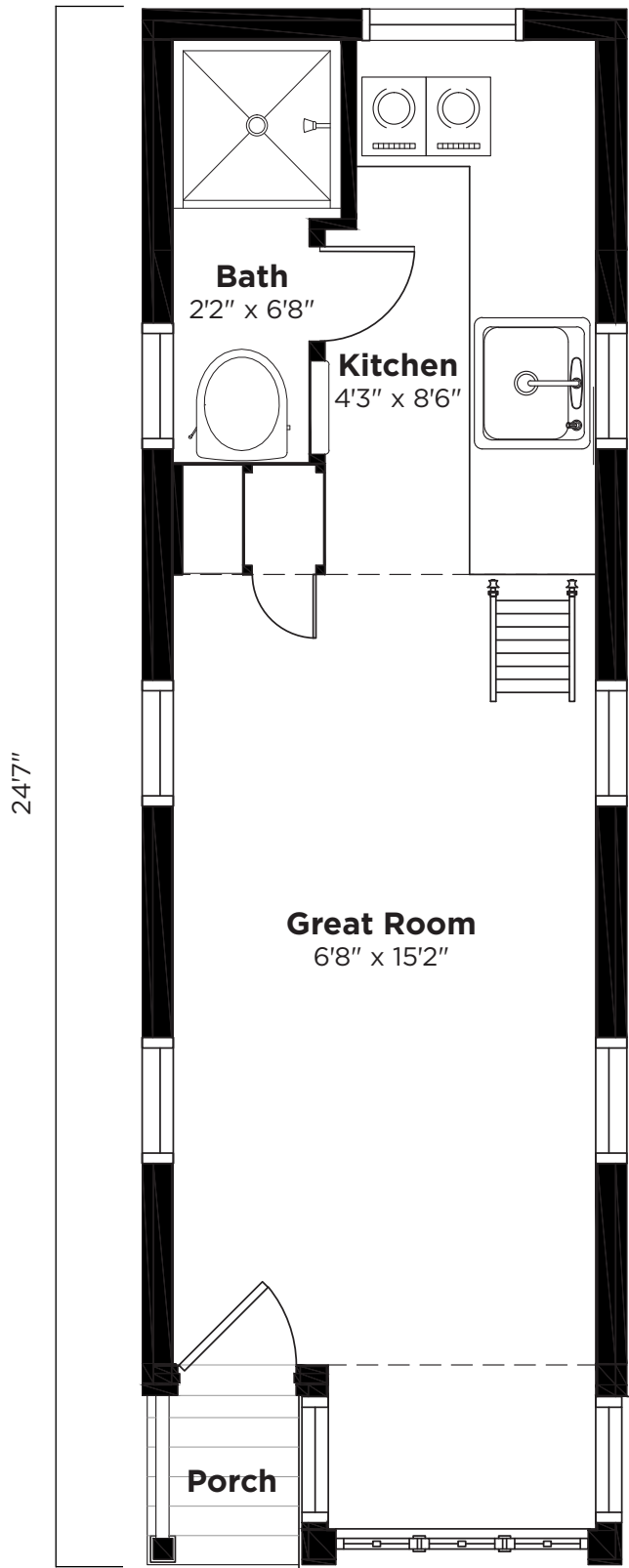
Square Footage
172 sq ft + 57 Loft

Dry Weight
10,500lbs

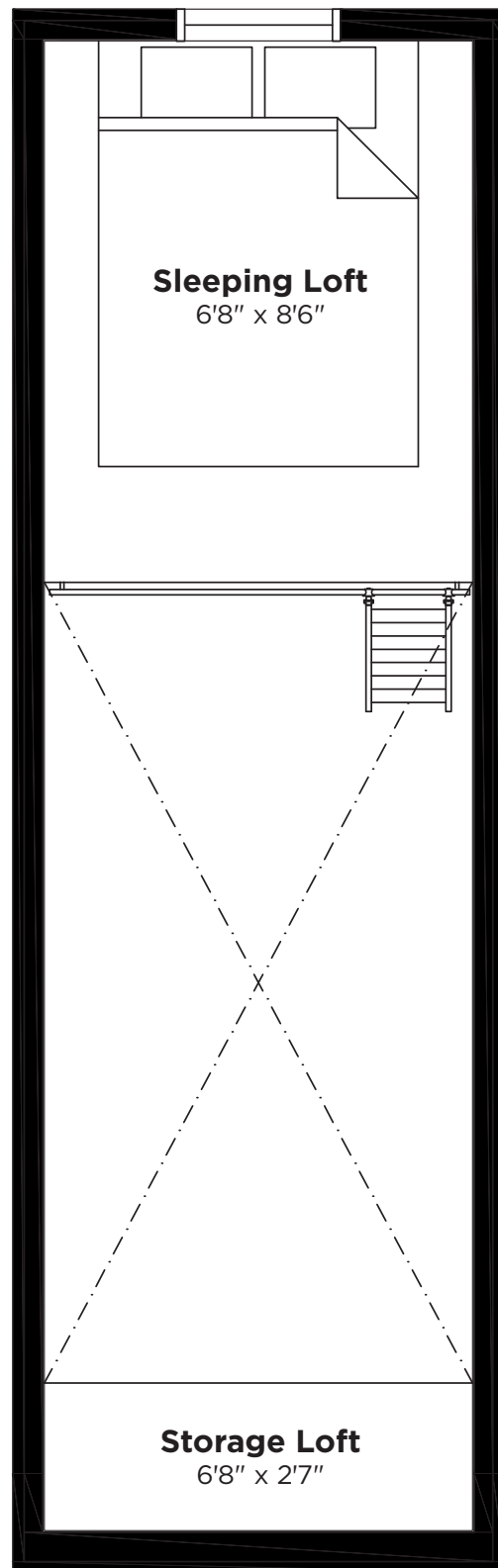
Sleeping Arrangement
Queen Size sleeping loft.

\$66,000 Ready-made: \$446/mo, 20% down, 6% APR, 15 year loan
\$502/mo, 10% down, 6% APR, 15 year loan

*Measurements Approximate



First Floor Layout



Loft Layout

CYPRESS™ 24—VANTAGE



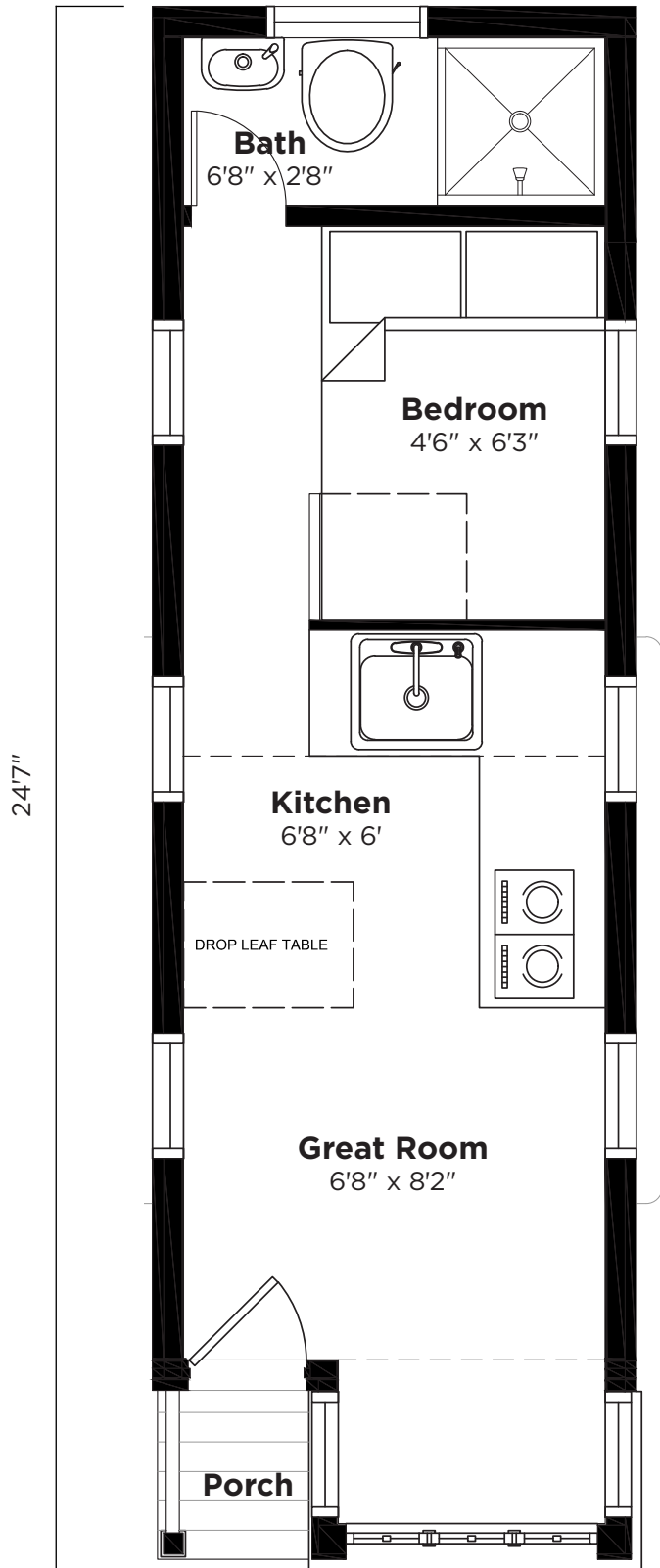
Square Footage
172 sq ft + 57 Loft

Dry Weight
10,500lbs

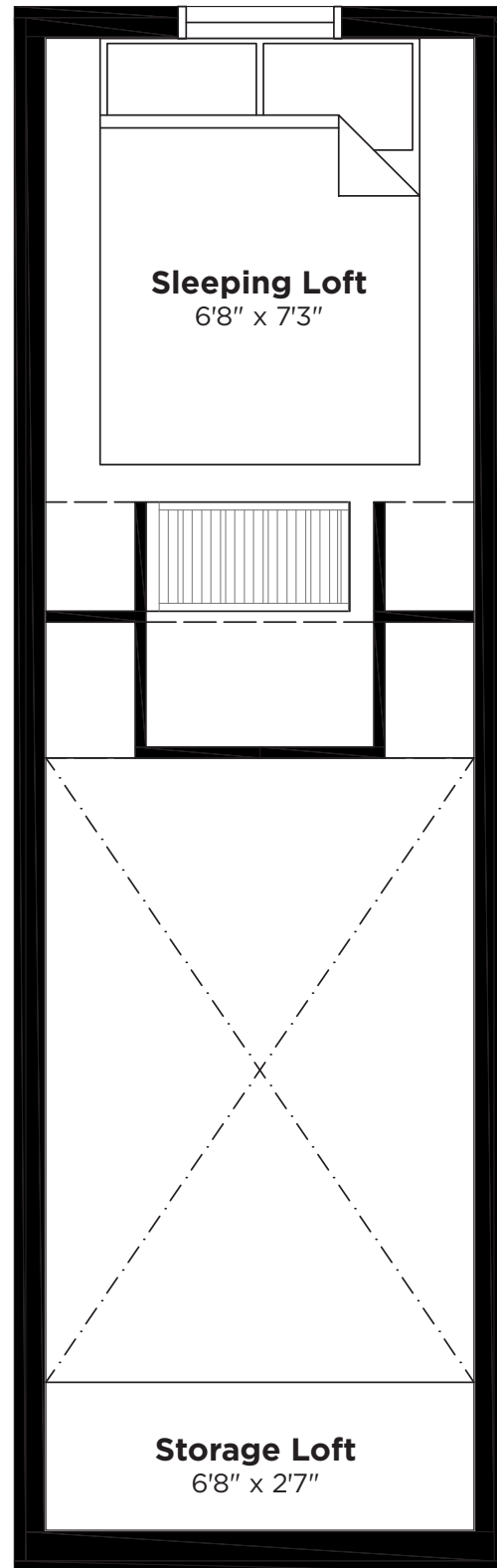
Sleeping Arrangement
Downstairs Full Bedroom and Queen Size sleeping loft.

\$66,000 Ready-made: \$446/mo, 20% down, 6% APR, 15 year loan
\$502/mo, 10% down, 6% APR, 15 year loan

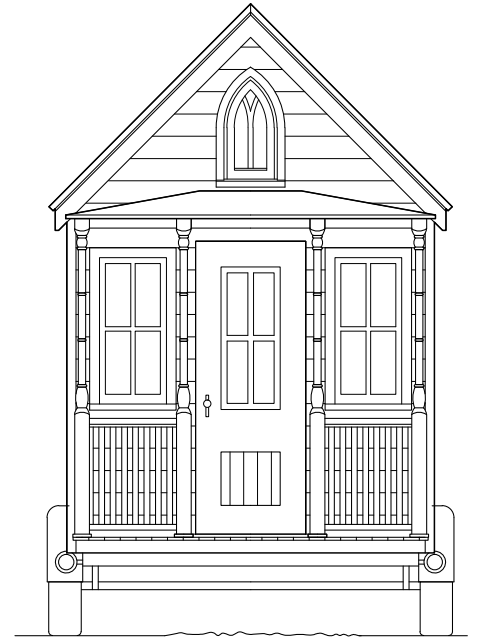
*Measurements Approximate



First Floor Layout



Loft Layout



ELM™ MODEL

The iconic Elm™ facade features a custom arched window above the door. The beauty and function of this house has withstood the test of time. Optional dormers are available in the loft for added space, light, and cross breeze. The full porch and lancet window give this exterior design the charm and elegance that started it all.

SPECS

House Width	7'6"
House Lengths	18' / 20' / 24'
Ceiling Height	6'6"
Loft Height	3'6"
Dry Weight	8,000-10,500
GVWR	9,990-15,000
Truck Size	¾ to 1 Ton



ELM™ 18—EQUATOR



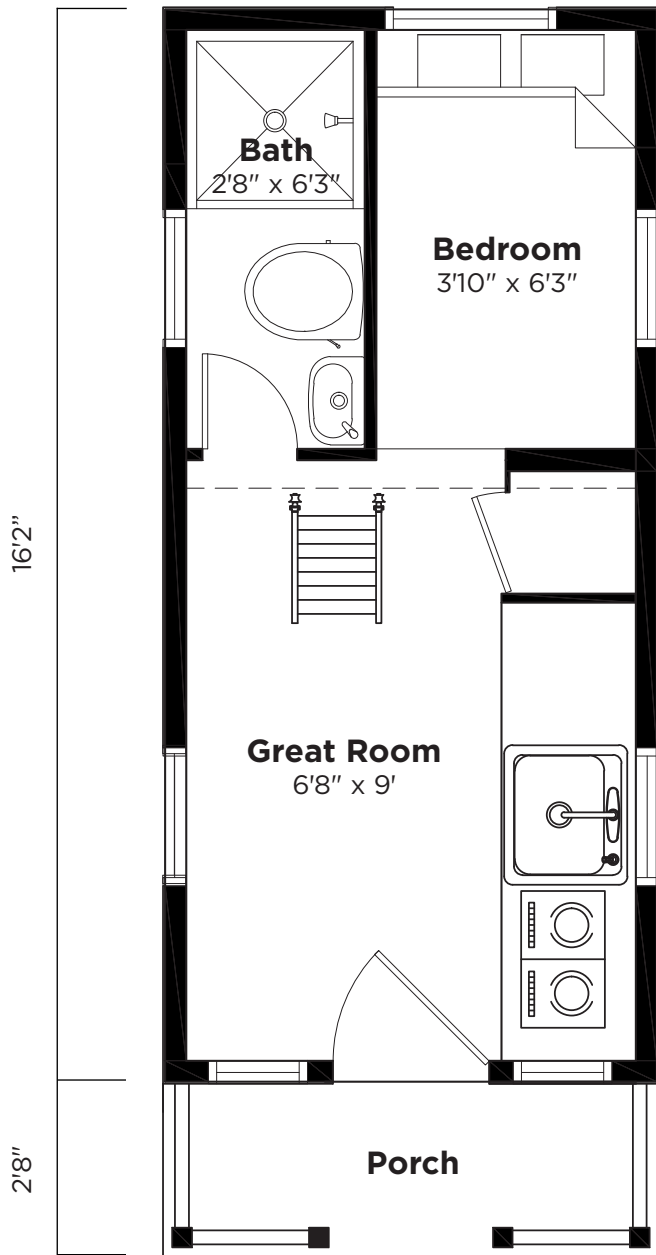
Square Footage
117 sq ft + 46 loft

Dry Weight
8,000lbs

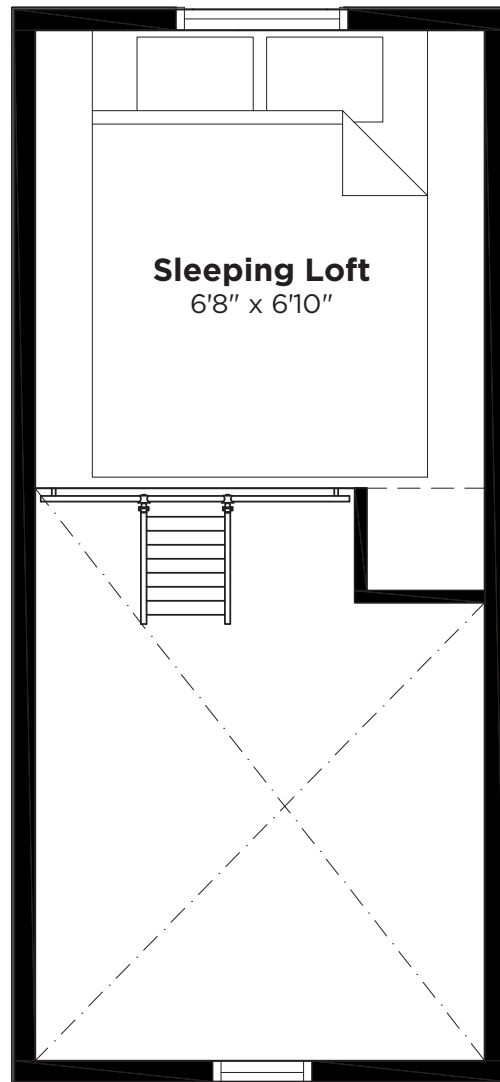
Sleeping Arrangement
Downstairs Twin Bedroom and Queen Size sleeping loft.

\$57,000 Ready-made: \$385/mo, 20% down, 6% APR, 15 year loan
\$433/mo, 10% down, 6% APR, 15 year loan

*Measurements Approximate



First Floor Layout



Loft Layout

ELM™ 18—OVERLOOK

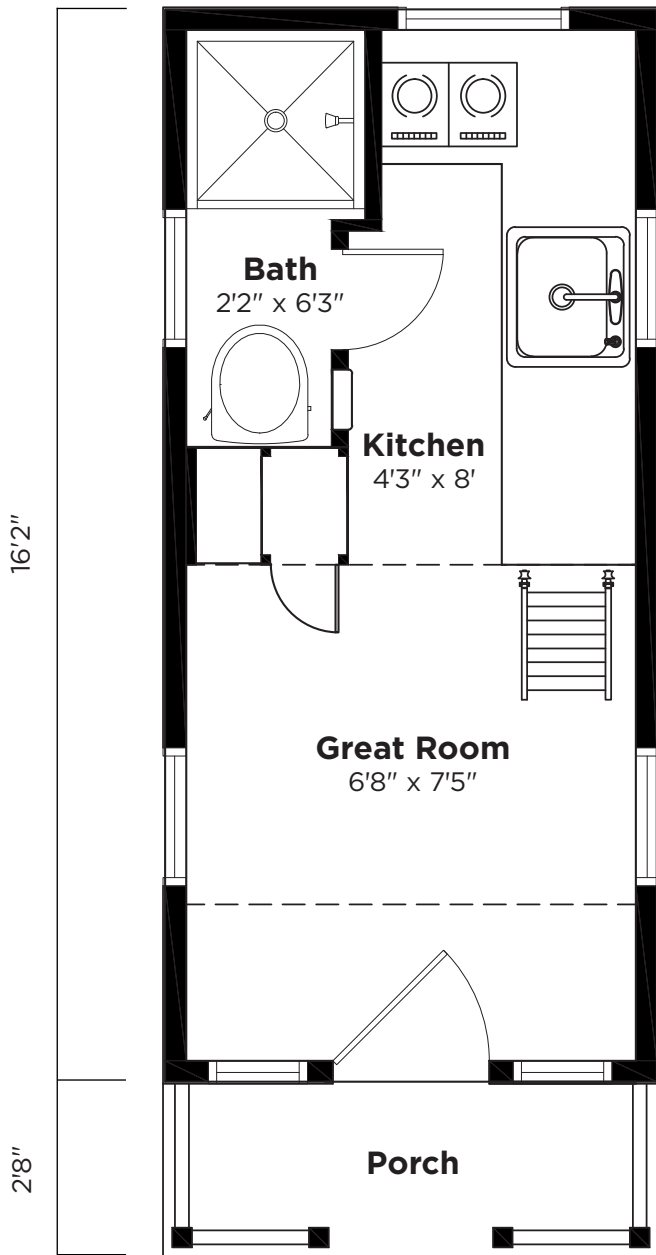
Square Footage
117 sq ft + 53 loft

Dry Weight
8,000lbs

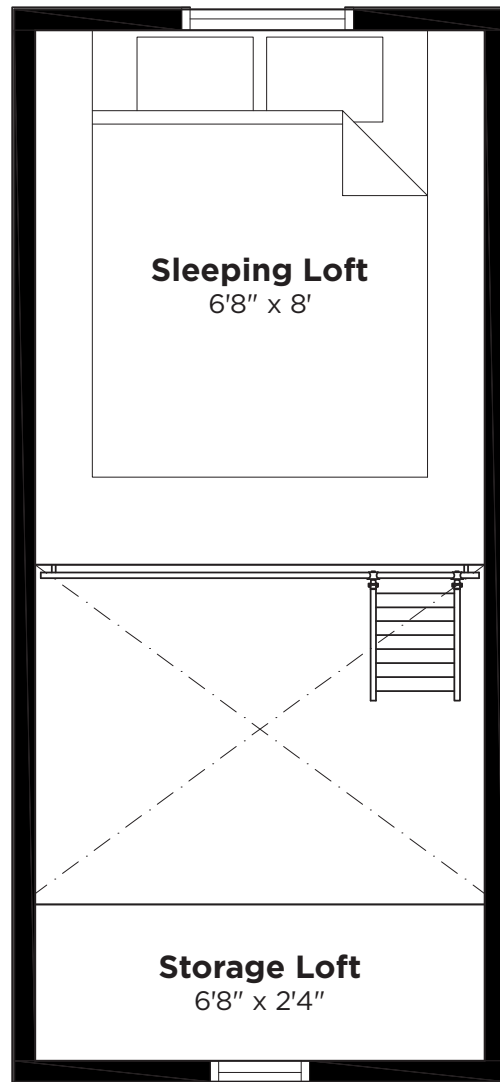
Sleeping Arrangement
Queen Size sleeping loft.

\$57,000 Ready-made: \$385/mo, 20% down, 6% APR, 15 year loan
\$433/mo, 10% down, 6% APR, 15 year loan

*Measurements Approximate



First Floor Layout



Loft Layout

ELM™ 20—EQUATOR

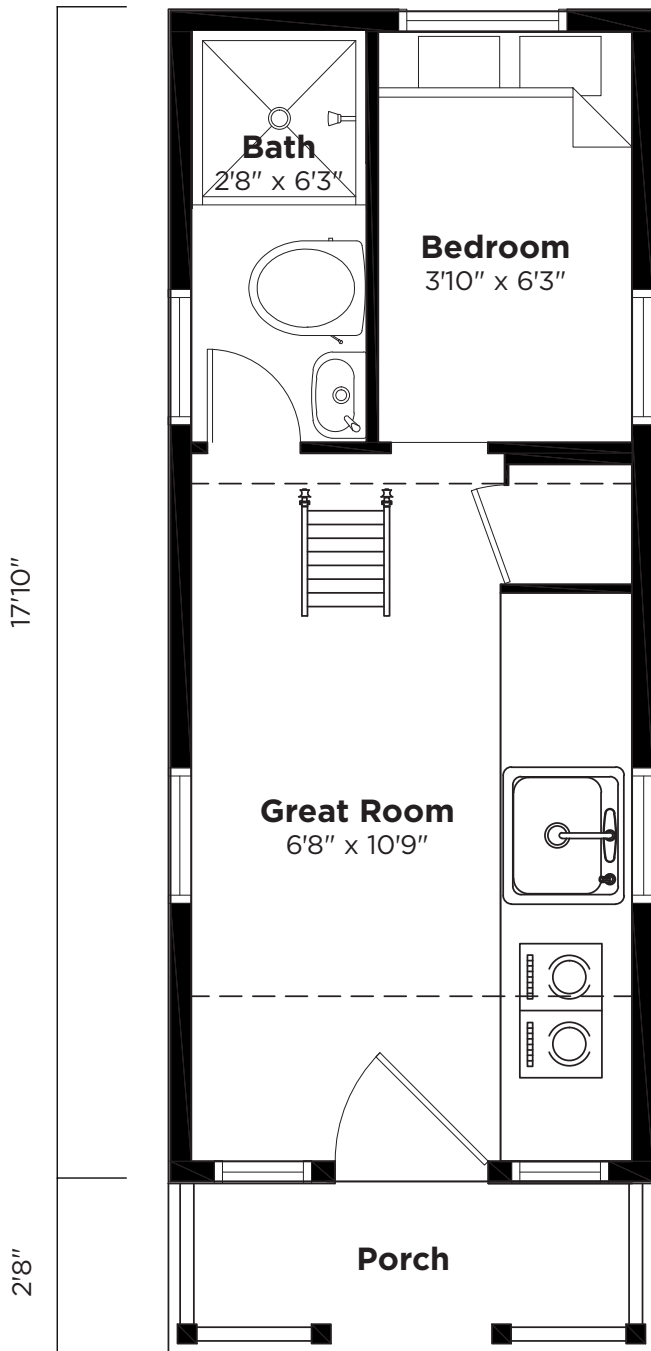
Square Footage
131 sq ft + 46 loft

Dry Weight
8,800lbs

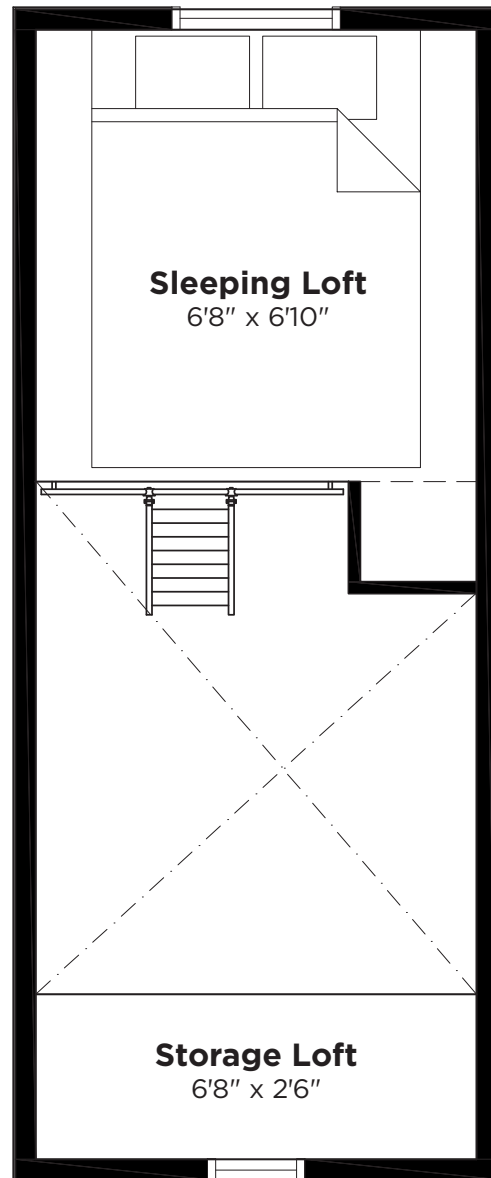
Sleeping Arrangement
Downstairs Twin Bedroom and Queen Size sleeping loft.

\$60,000 Ready-made: \$406/mo, 20% down, 6% APR, 15 year loan
\$456/mo, 10% down, 6% APR, 15 year loan

*Measurements Approximate



First Floor Layout



Loft Layout

ELM™ 20—HORIZON

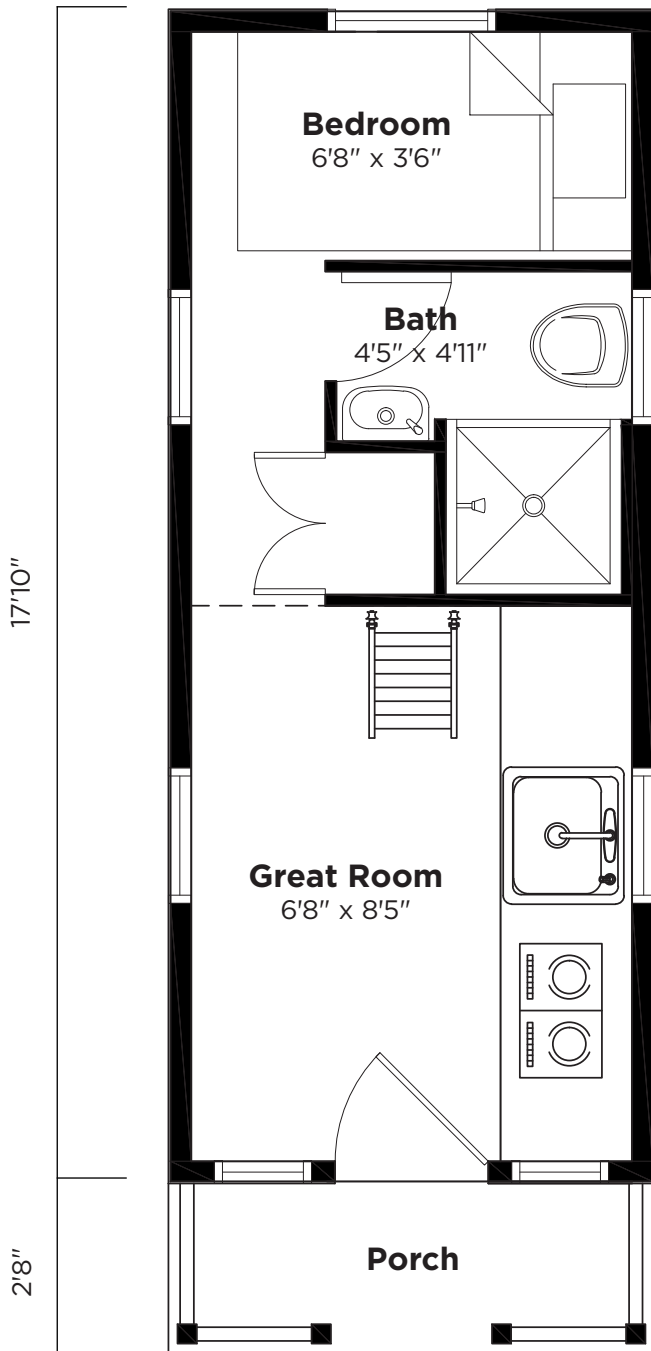
Square Footage
131 sq ft + 58 loft

Dry Weight
8,800lbs

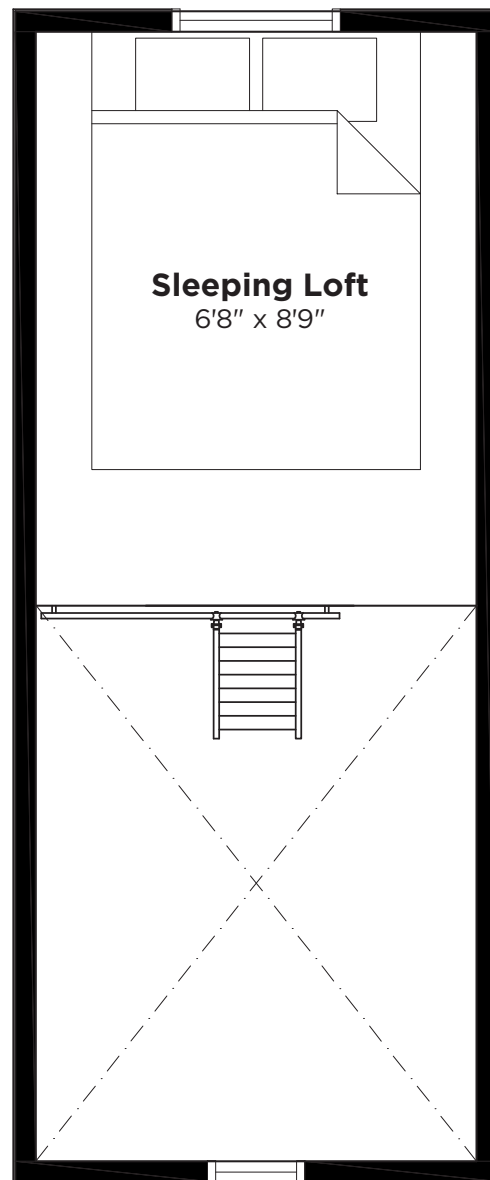
Sleeping Arrangement
Downstairs Twin Bedroom and Queen Size sleeping loft.

\$60,000 Ready-made: \$406/mo, 20% down, 6% APR, 15 year loan
\$456/mo, 10% down, 6% APR, 15 year loan

*Measurements Approximate



First Floor Layout



Loft Layout

ELM™ 20—OVERLOOK



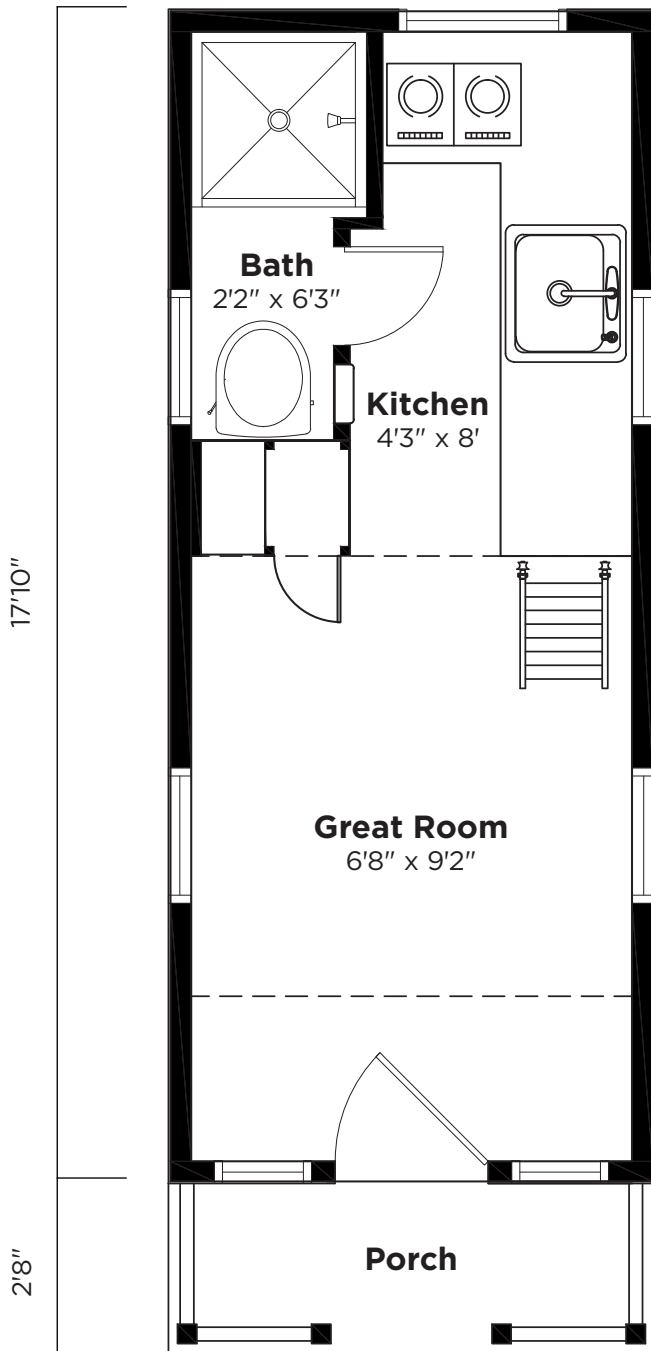
Square Footage
131 sq ft + 53 loft

Dry Weight
8,800lbs

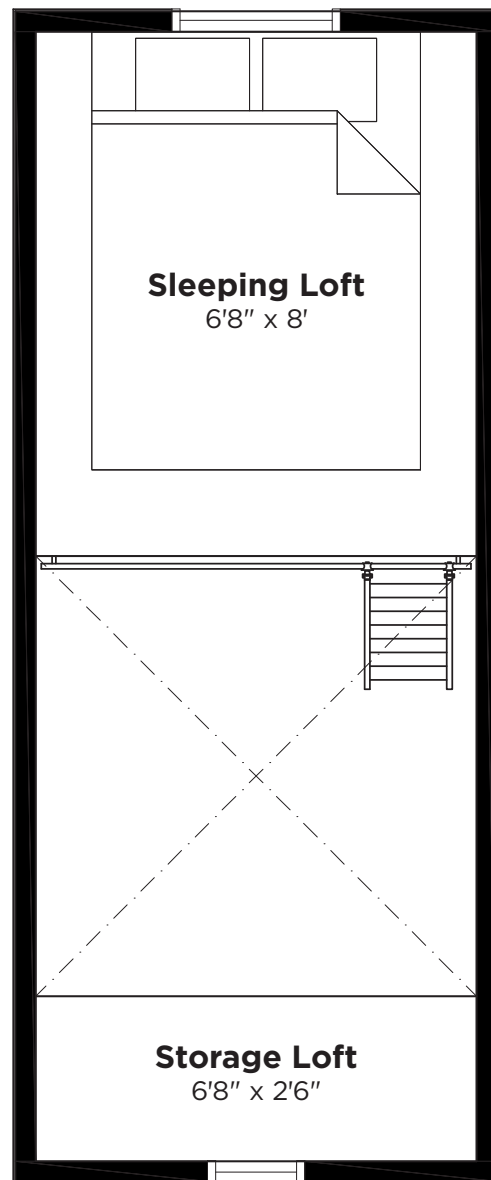
Sleeping Arrangement
Queen Size sleeping loft.

\$60,000 Ready-made: \$406/mo, 20% down, 6% APR, 15 year loan
\$456/mo, 10% down, 6% APR, 15 year loan

*Measurements Approximate



First Floor Layout



Loft Layout

ELM™ 24—EQUATOR

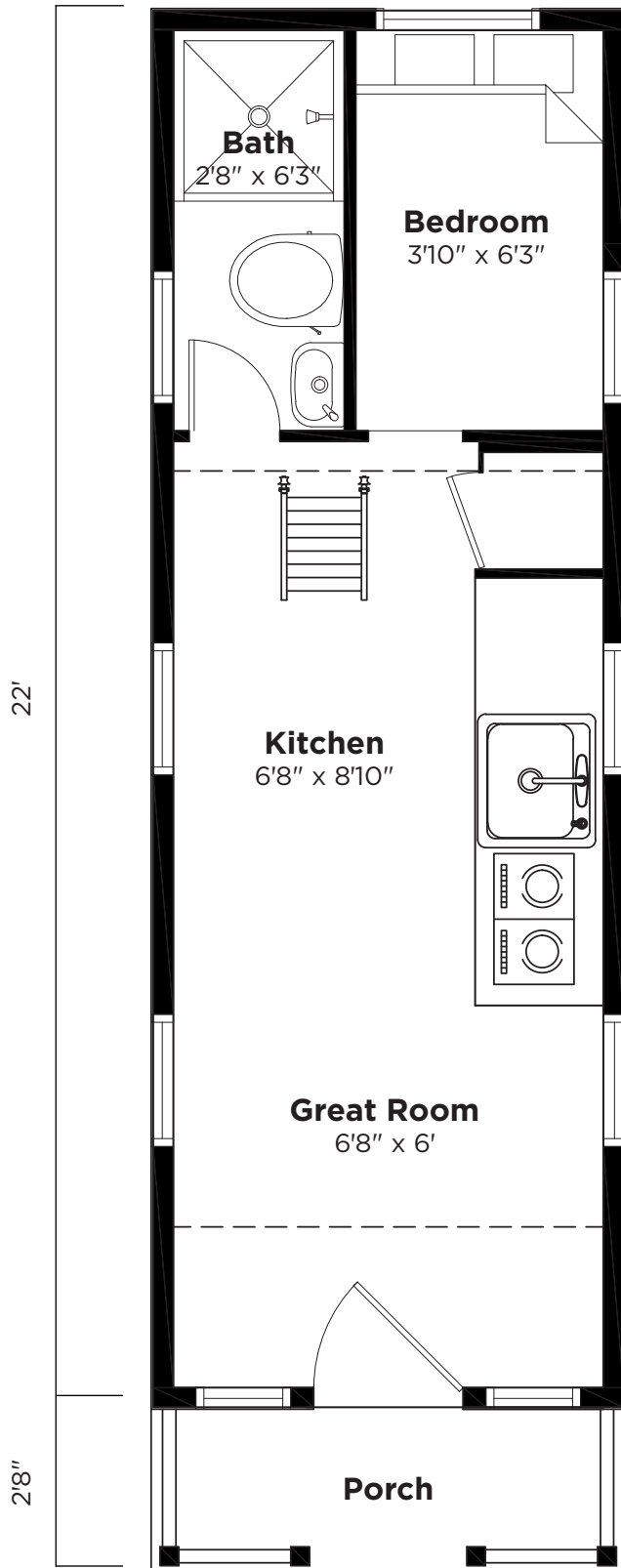
Square Footage
161 sq ft + 46 loft

Dry Weight
10,500lbs

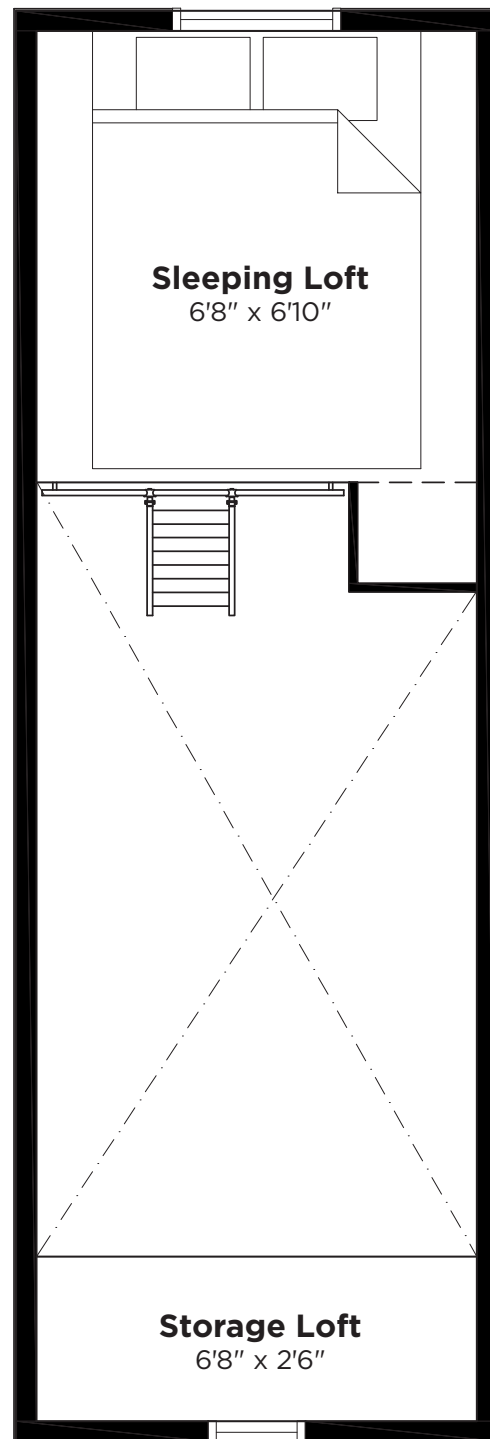
Sleeping Arrangement
Downstairs Twin Bedroom and Queen Size sleeping loft.

\$66,000 Ready-made: \$446/mo, 20% down, 6% APR, 15 year loan
\$502/mo, 10% down, 6% APR, 15 year loan

*Measurements Approximate



First Floor Layout



Loft Layout

ELM™ 24—HORIZON

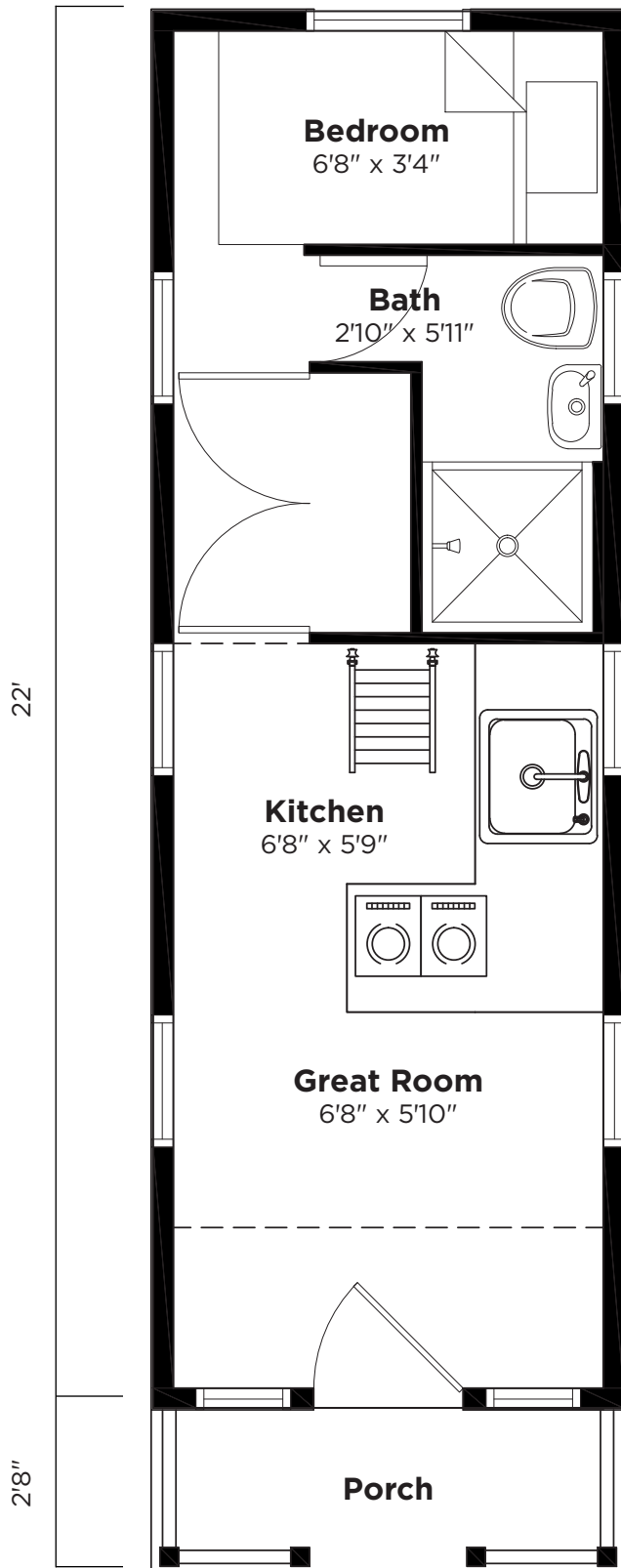
Square Footage
161 sq ft + 64 loft

Dry Weight
10,500lbs

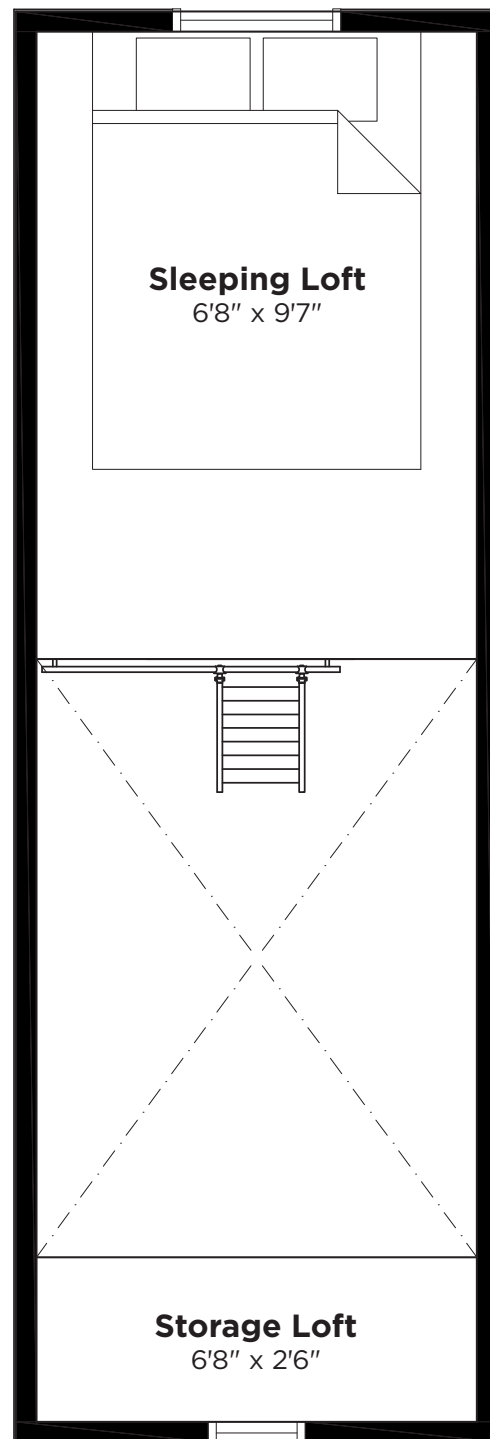
Sleeping Arrangement
Downstairs Twin Bedroom and Queen Size sleeping loft.

\$66,000 Ready-made: \$446/mo, 20% down, 6% APR, 15 year loan
\$502/mo, 10% down, 6% APR, 15 year loan

*Measurements Approximate



First Floor Layout



Loft Layout

ELM™ 24—OVERLOOK

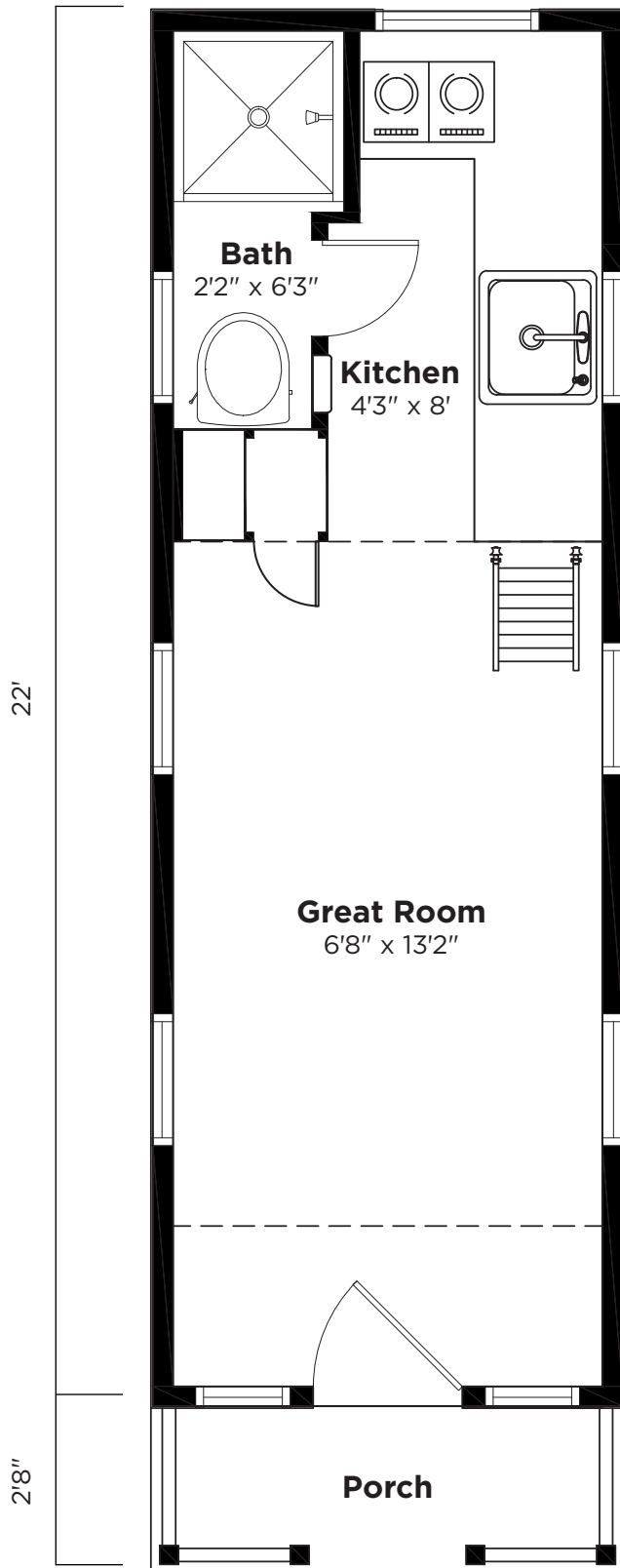
Square Footage
161 sq ft + 53 Loft

Dry Weight
10,500lbs

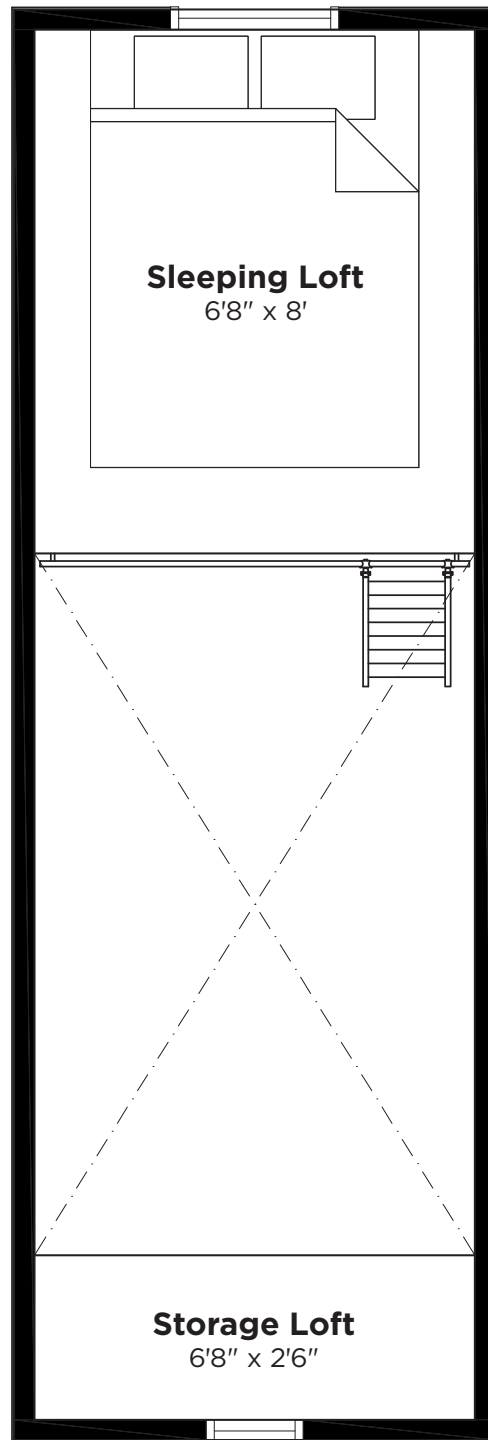
Sleeping Arrangement
Queen Size sleeping loft.

\$66,000 Ready-made: \$446/mo, 20% down, 6% APR, 15 year loan
\$502/mo, 10% down, 6% APR, 15 year loan

*Measurements Approximate



First Floor Layout



Loft Layout

ELM™ 24—VANTAGE



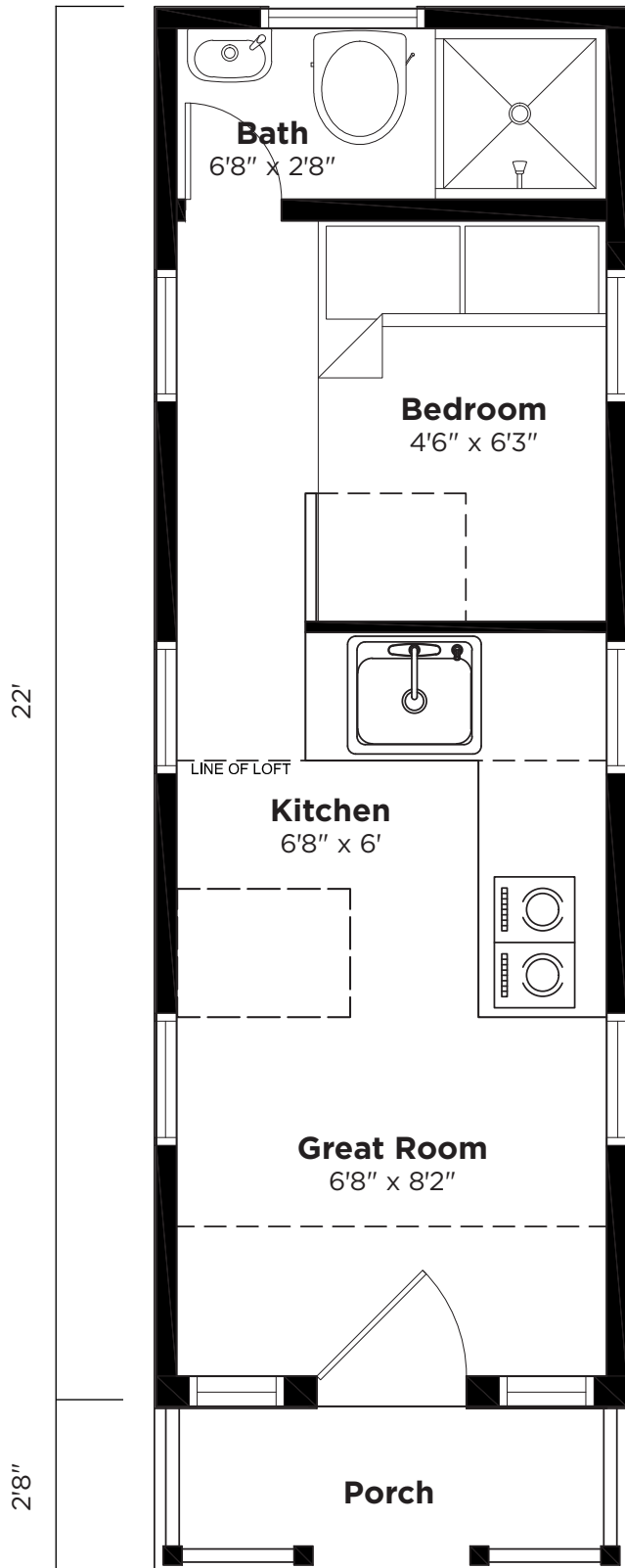
Square Footage
161 sq ft + 48 Loft

Dry Weight
10,500lbs

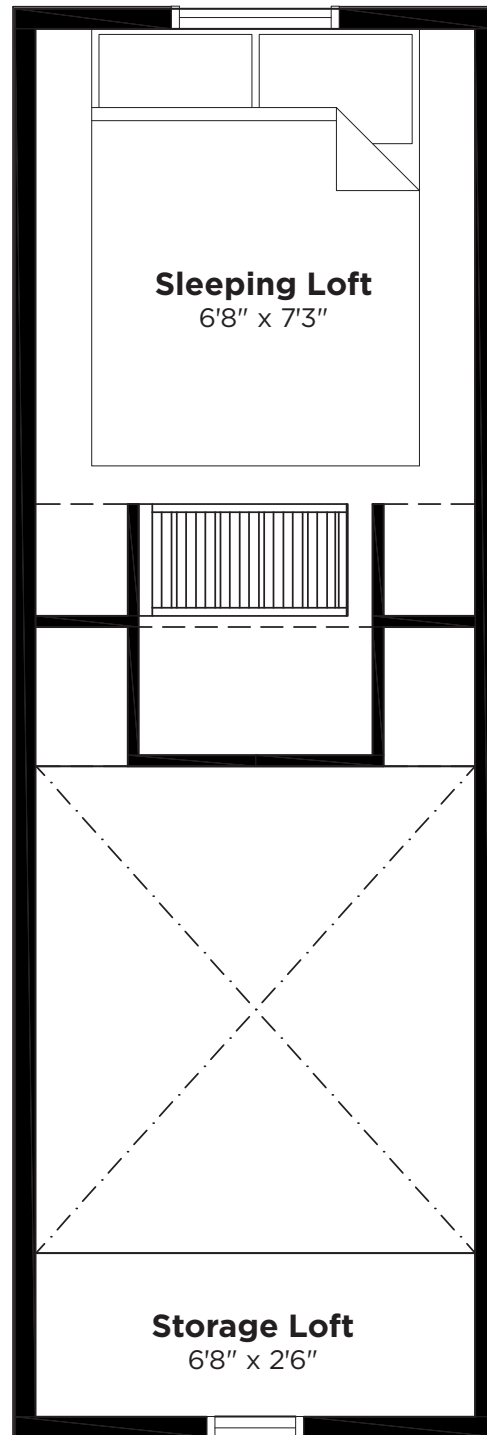
Sleeping Arrangement
Downstairs Full Bedroom and Queen Size sleeping loft.

\$66,000 Ready-made: \$446/mo, 20% down, 6% APR, 15 year loan
\$502/mo, 10% down, 6% APR, 15 year loan

*Measurements Approximate



First Floor Layout



Loft Layout

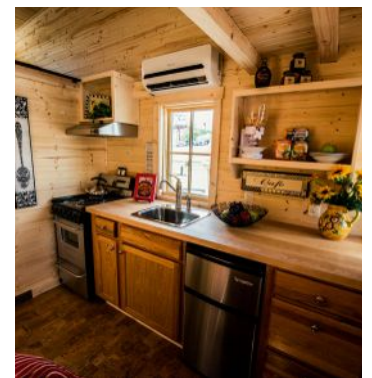


LINDEN™ MODEL

The Linden™ has an open great room and an innovative new loft are the major features of this design. The roof includes two dormers, which will give your home towering ceilings and extra sleeping space. The full porch across the front provides a nice outdoor sitting area to enjoy a relaxing evening.

SPECS

House Width	7'6"
House Lengths	20'
Ceiling Height	6'6"
Loft Height	3'6"
Dry Weight	8,800
GVWR	9,990
Truck Size	¾ Ton



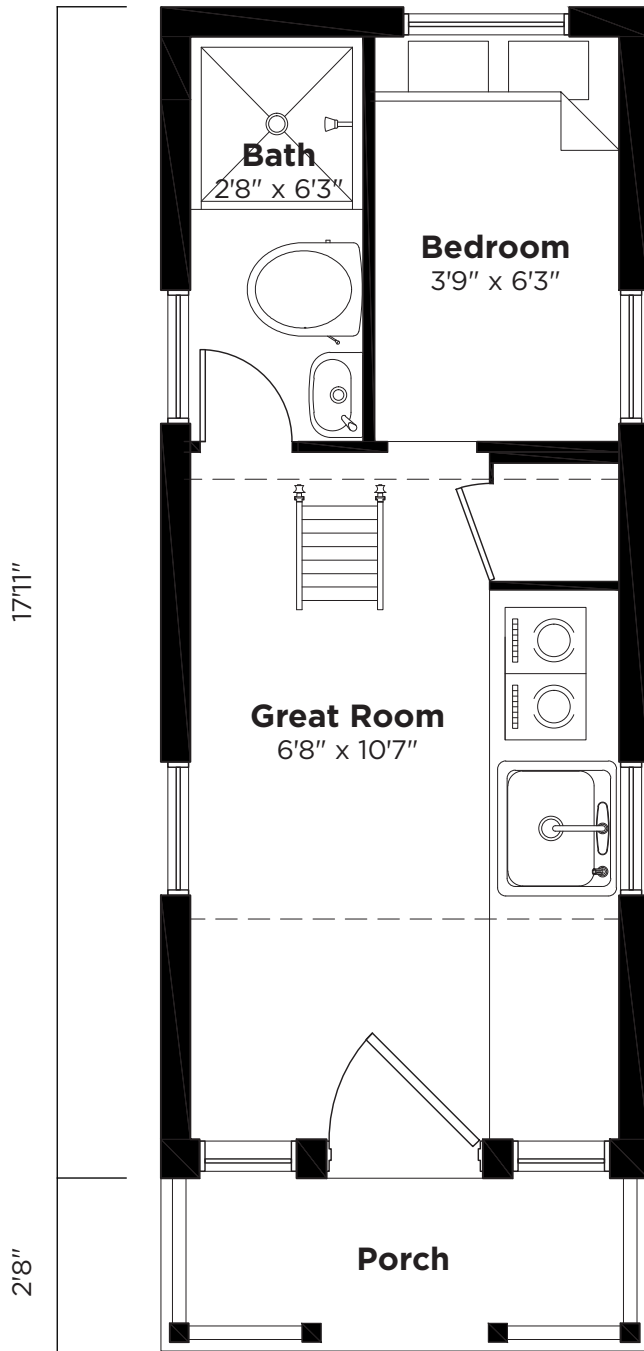
LINDEN™ 20—EQUATOR

Square Footage
131 sq ft + 46 loft

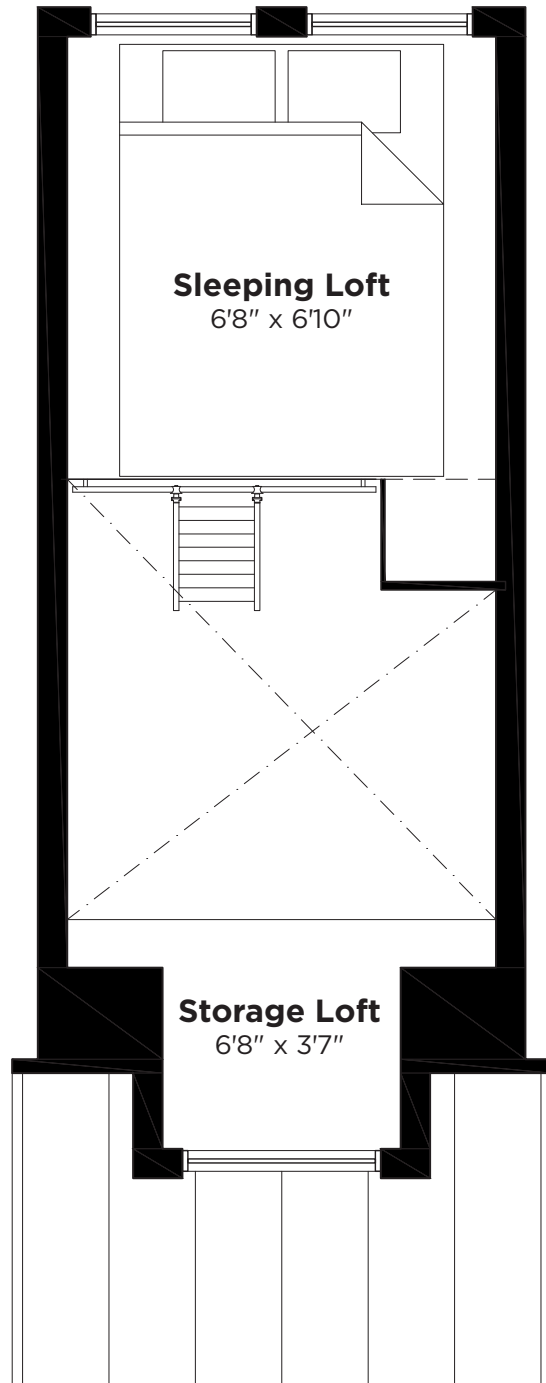
Dry Weight
8,800lbs

Sleeping Arrangement
Downstairs Twin Bedroom and King Size sleeping loft.

\$60,000 Ready-made: \$406/mo, 20% down, 6% APR, 15 year loan *Measurements Approximate
\$456/mo, 10% down, 6% APR, 15 year loan



First Floor Layout



Loft Layout

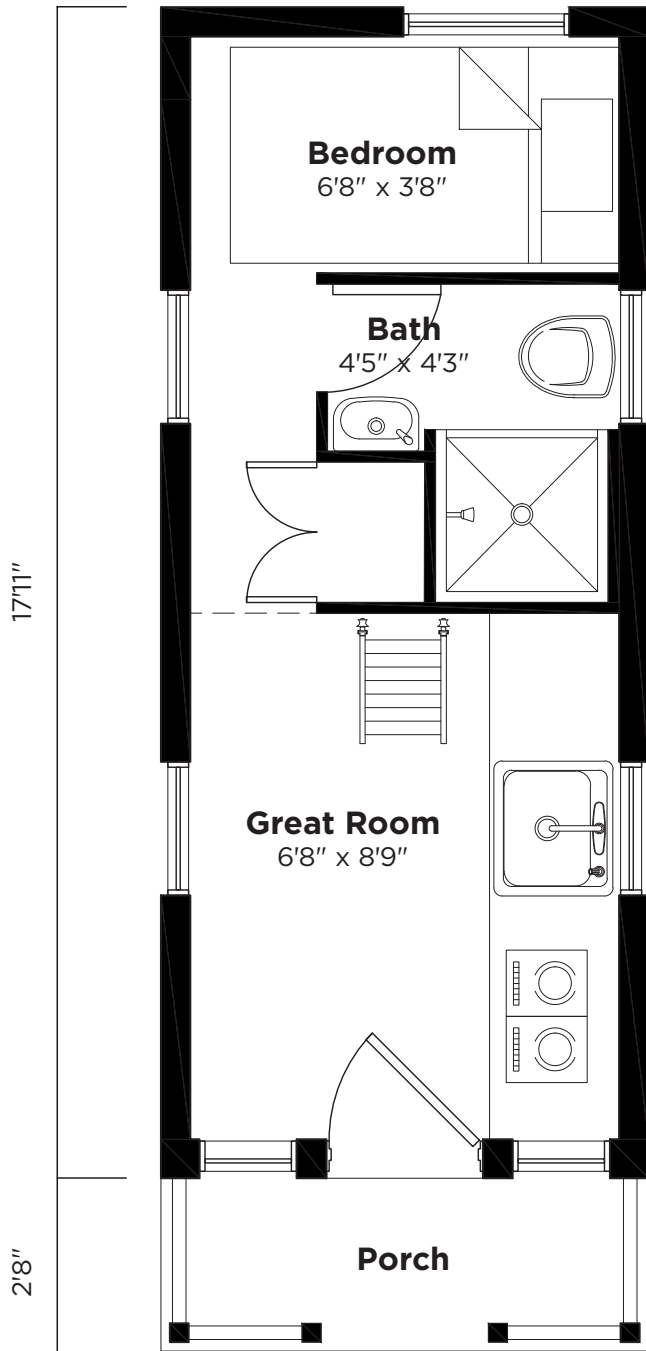
LINDEN™ 20—HORIZON

Square Footage
131 sq ft + 55 loft

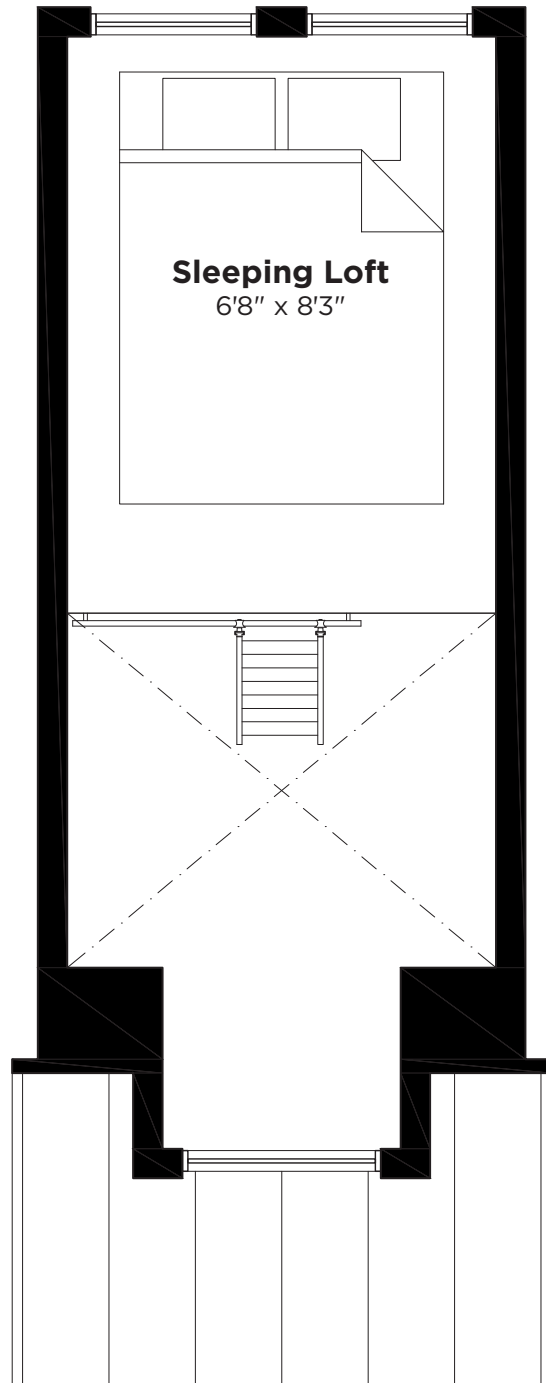
Dry Weight
8,800lbs

Sleeping Arrangement
Downstairs Twin Bedroom and King Size sleeping loft.

\$60,000 Ready-made: \$406/mo, 20% down, 6% APR, 15 year loan *Measurements Approximate
\$456/mo, 10% down, 6% APR, 15 year loan



First Floor Layout

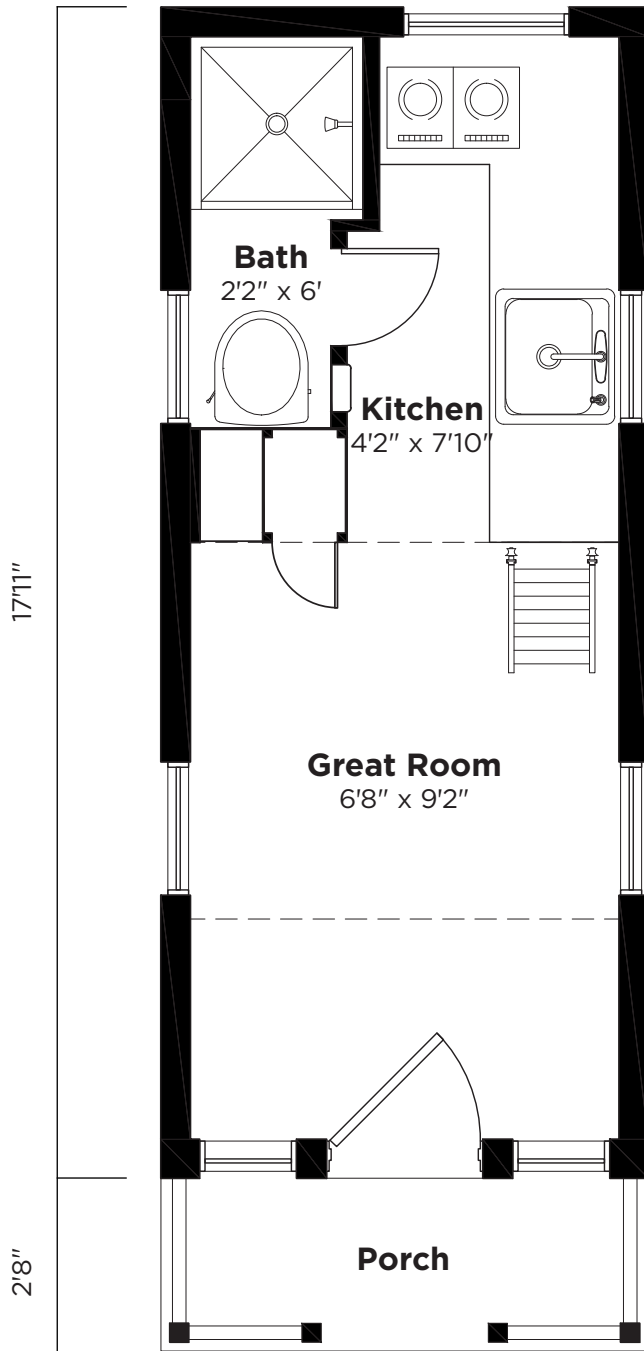


Loft Layout

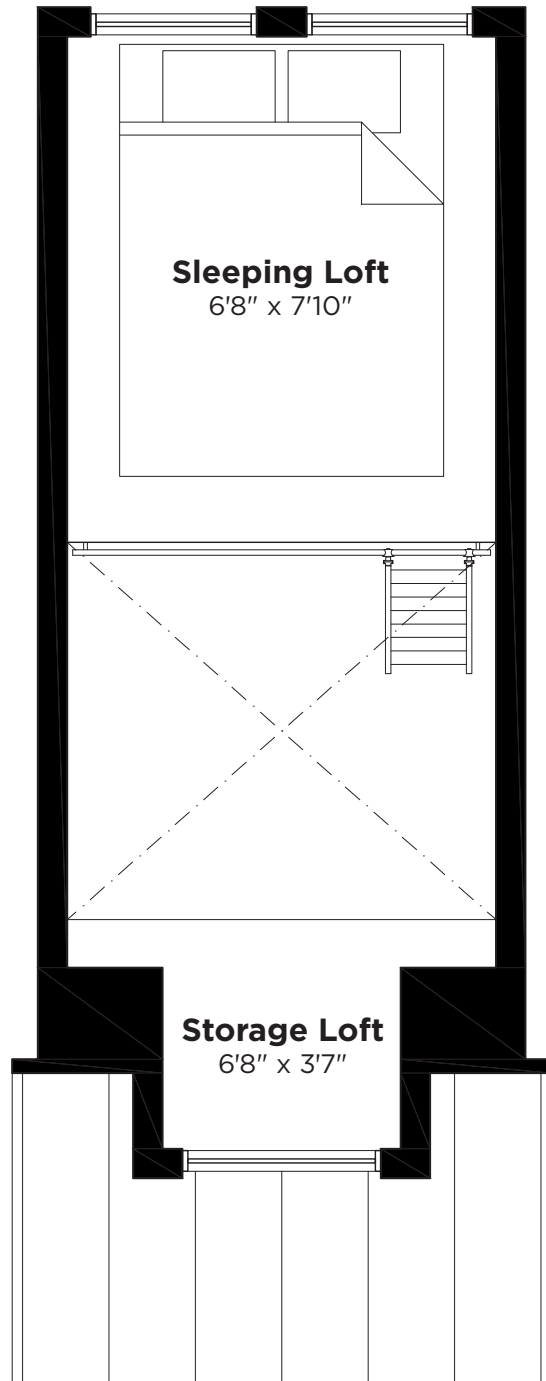
LINDEN™ 20—OVERLOOK

Square Footage 131 sq ft + 52 Loft
Dry Weight 8,800lbs
Sleeping Arrangement King Size sleeping loft.

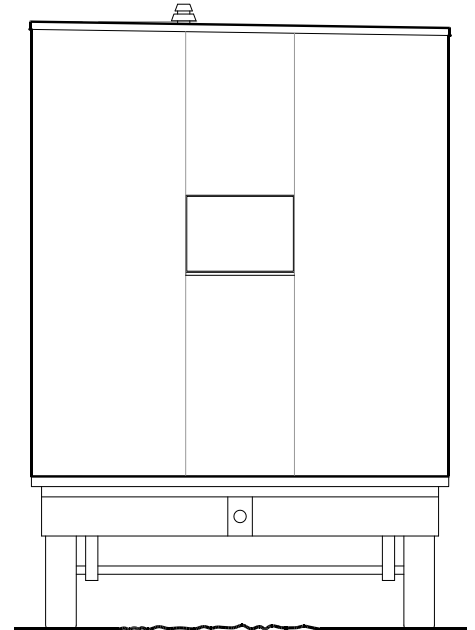
\$60,000 Ready-made: \$406/mo, 20% down, 6% APR, 15 year loan *Measurements Approximate
 \$456/mo, 10% down, 6% APR, 15 year loan



First Floor Layout



Loft Layout



MICA™ MODEL

The Mica™ is our sleek and modern home. Simply shaped it can have hot rolled corrosion resistant steel siding which separates this house from anything else on the road. You can also go more traditional with cedar siding. At 8'6" wide, the Mica™ maximizes the road width without requiring any special permit to tow.

SPECS	
House Width	8'6"
House Lengths	20'3"
Ceiling Height	7'10"
Loft Height	NA
Dry Weight	10,000
GVWR	9,990
Truck Size	1 Ton

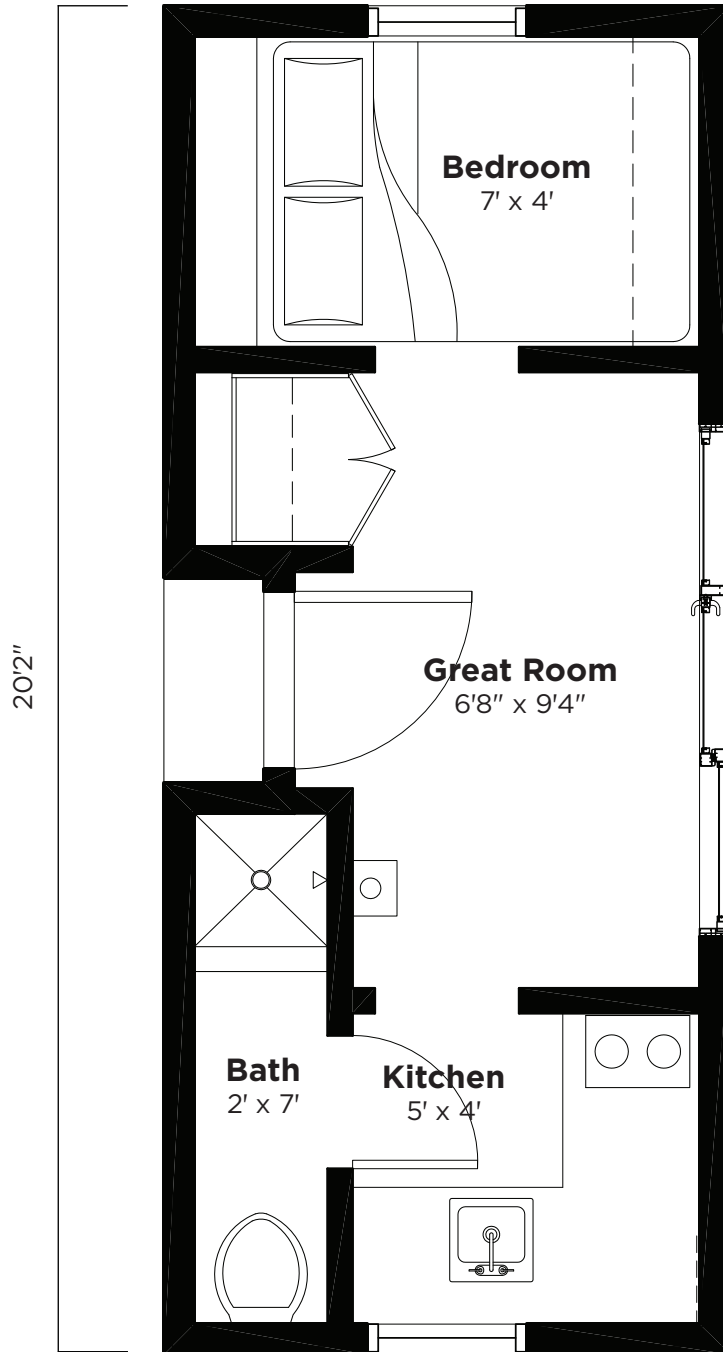


MICA™ 20—CLEAR

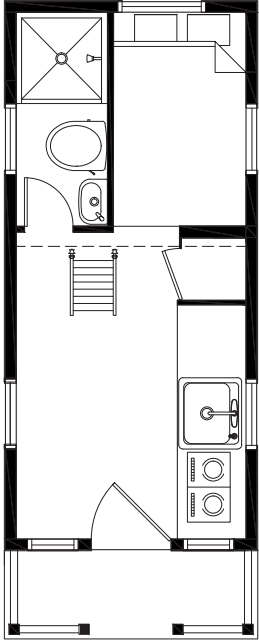
Specifics 172 sq ft
Dry Weight 10,000lbs
Sleeping Arrangement Downstairs Full Bedroom.

\$66,000 Ready-made: \$446/mo, 20% down, 6% APR, 15 year loan
\$502/mo, 10% down, 6% APR, 15 year loan

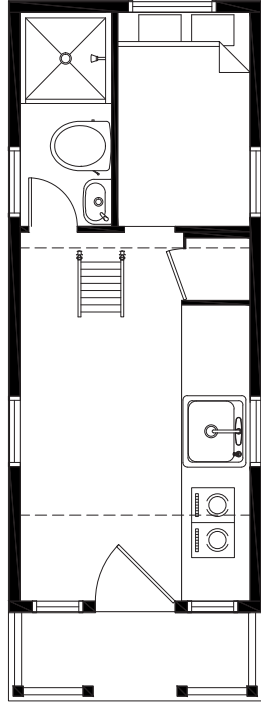
*Measurements Approximate



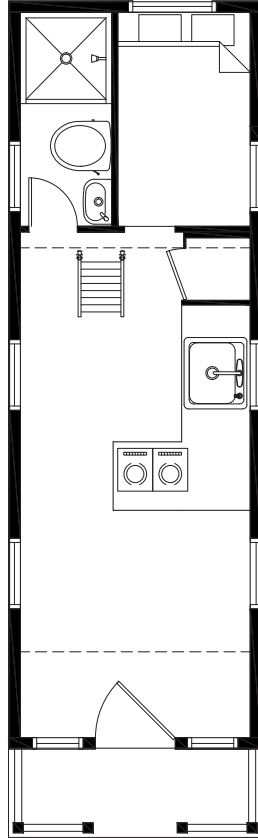
First Floor Layout



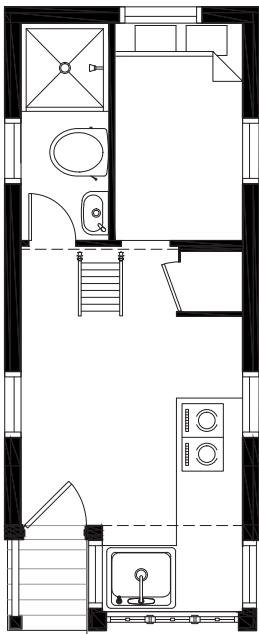
Elm™ 18 pg 16
Available: A



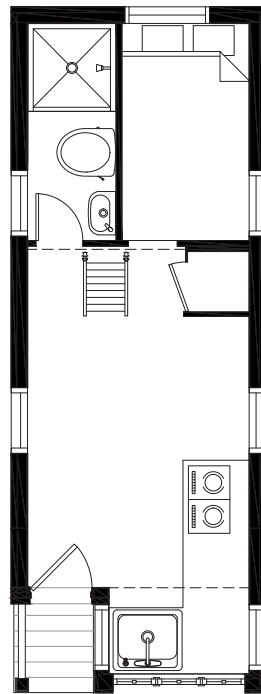
Elm™ 20 pg 18
Linden™ 20 pg 26
Available: A



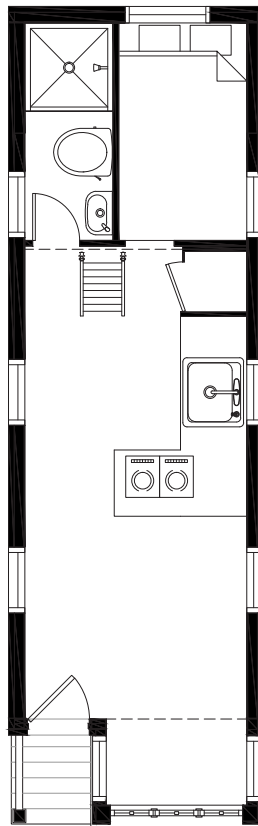
Elm™ 24 pg 21
Available: A, B



Cypress™ 18 pg 5
Available: A, C



Cypress™ 20 pg 8
Available: A, C



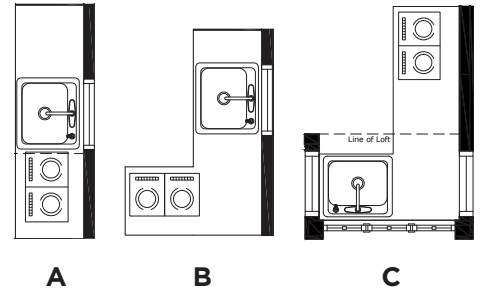
Cypress™ 24 pg 11
Available: A, B, C

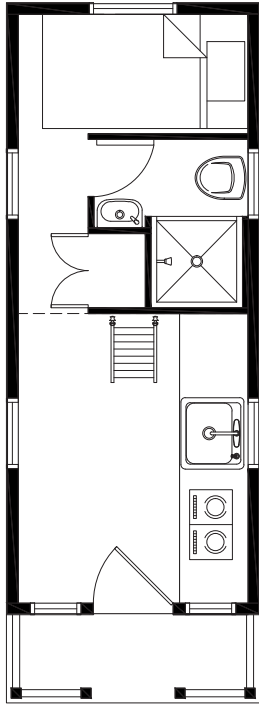
Equator Kitchen Options

A: Straight Kitchen as shown in the Elm™ 18, Elm™ 20 and Linden™ 20.

B: L-Shaped Kitchen as shown in the Elm™ 24 and Cypress™ 24.

C: Bay window kitchen is only available in the Cypress™ models.

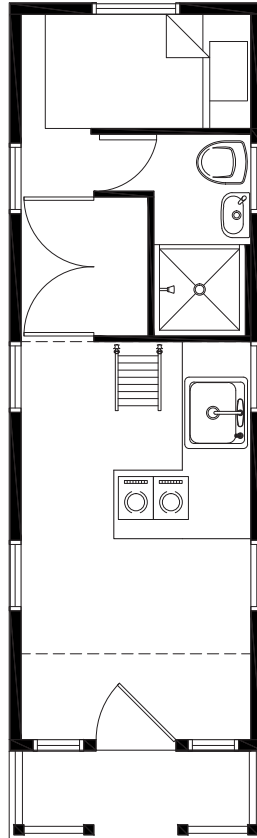




Elm™ 20 pg 19

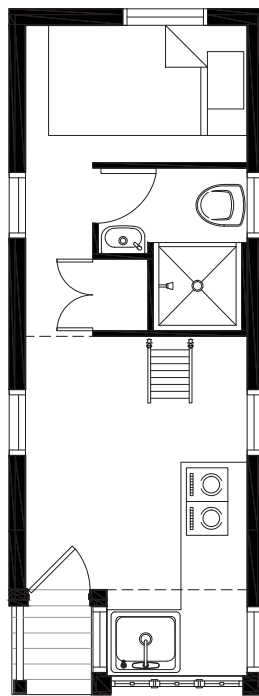
Linden™ 20 pg 27

Available: Kitchen A and Bath X



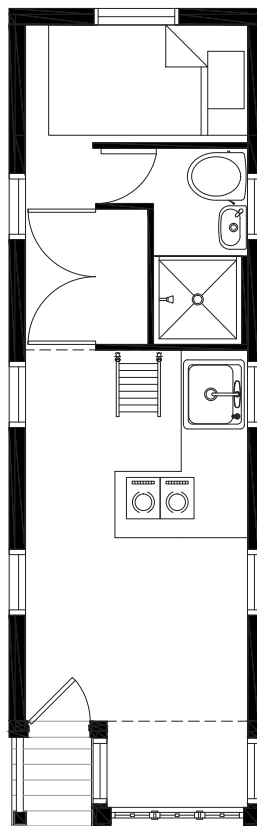
Elm™ 24 pg 22

Available: Kitchens A, B Baths X, Y



Cypress™ 20 pg 9

Available: Kitchen A, B, C and Bath X



Cypress™ 24 pg 12

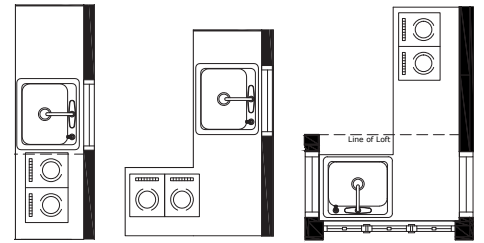
Available: Kitchens A, B, C Baths X, Y

Horizon Kitchen Options

A: Straight Kitchen as shown in the Elm™ 20 and Linden™ 20.

B: L-Shaped Kitchen as shown in the Elm™ 24 and Cypress™ 24.

C: Bay window kitchen is only available in the Cypress™ models.



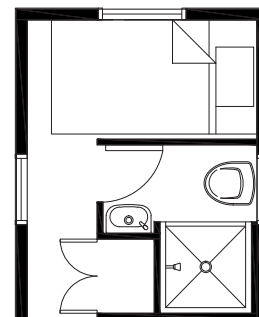
A

B

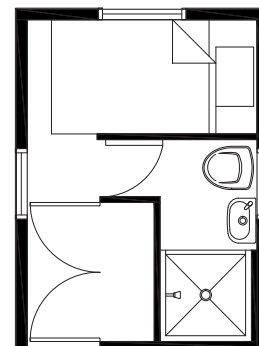
C

Horizon Bath Options

The closet and bathroom space changes between floor plans.



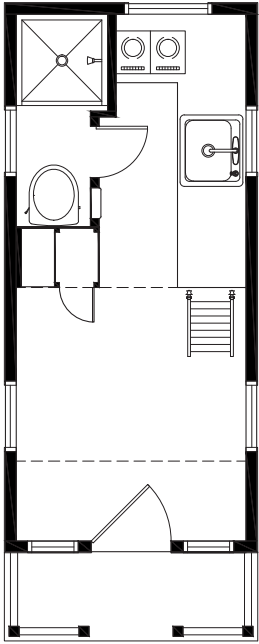
X



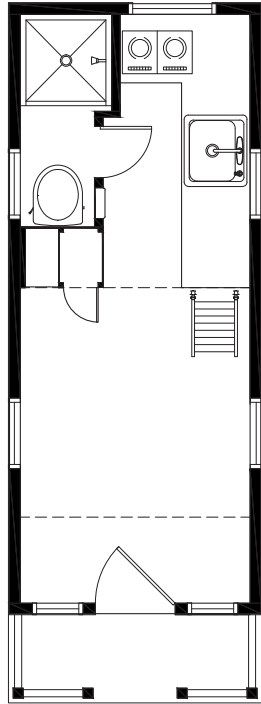
Y

OVERLOOK FLOOR PLAN OPTIONS

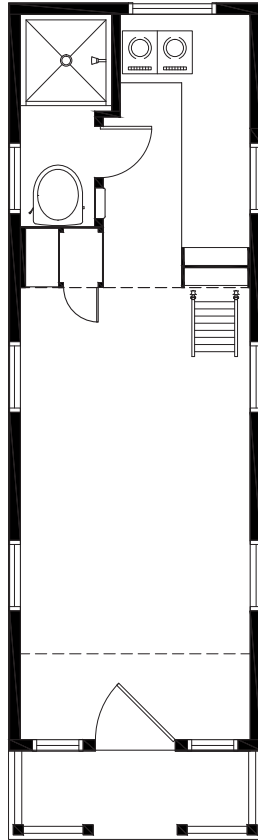
AVAILABLE IN:



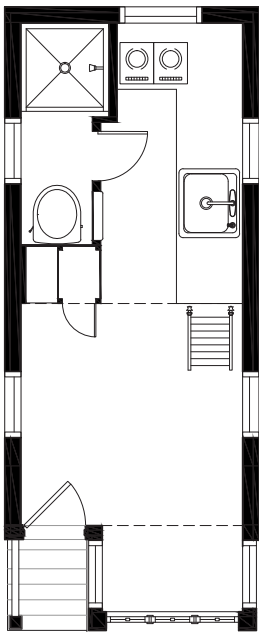
Elm™ 18 pg 17
Available: A, B



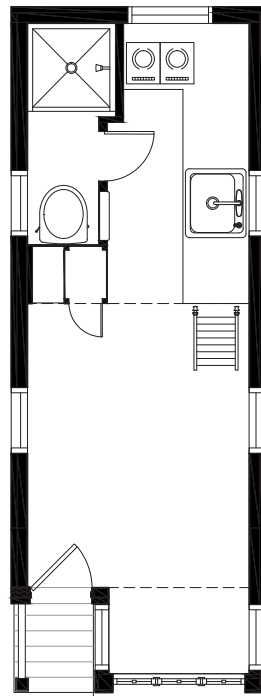
Elm™ 20 pg 20
Linden™ 20 pg 28
Available: A, B



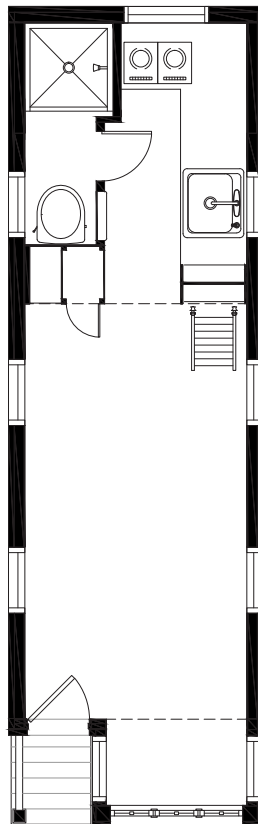
Elm™ 24 pg 23
Available: A, B



Cypress™ 18 pg 6
Available: A, B



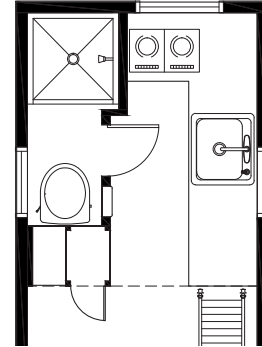
Cypress™ 20 pg 10
Available: A, B



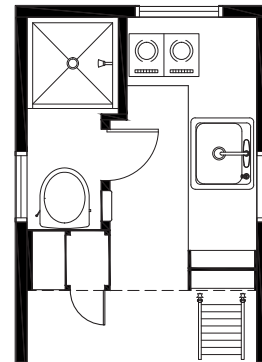
Cypress™ 24 pg 13
Available: A, B

Overlook Storage Options

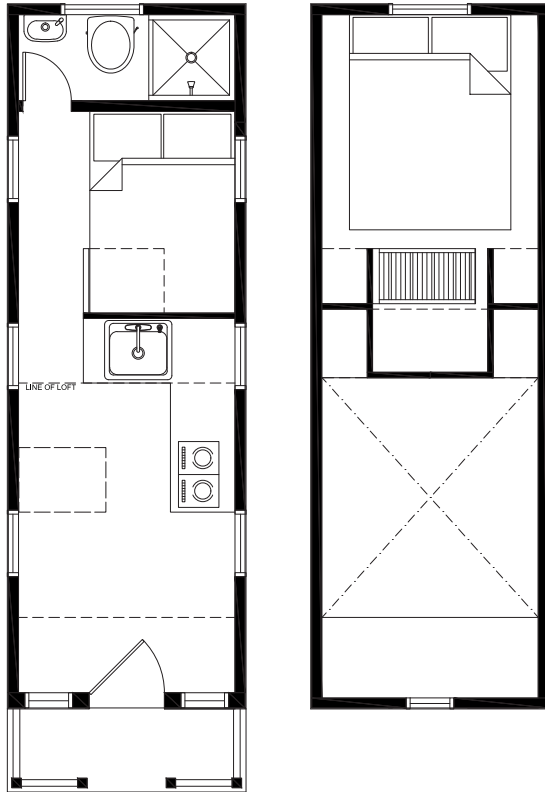
All models feature additional storage in the kitchen area with customized shelving.



A



B

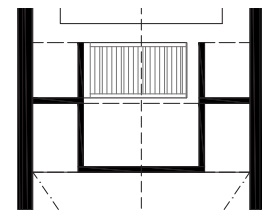


Elm™ 24 pg 24
Available: A, B, X

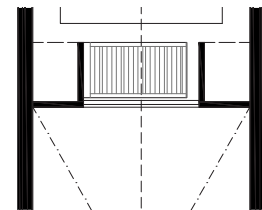
Vantage Loft Option

A: Expanded shelving option for increased storage space.

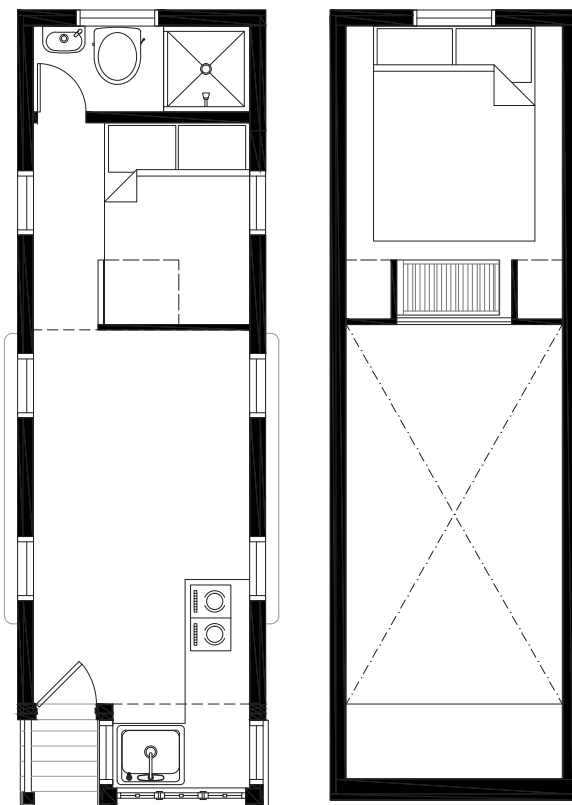
B: Loft change for one set of storage shelving.



A



B

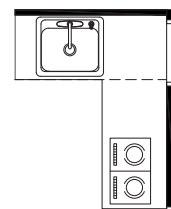


Cypress™ 24 pg 14
Available: A, B, X, Y

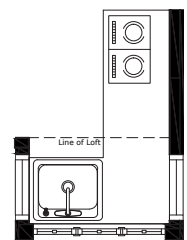
Vantage Kitchen Option

X: Kitchen in the center of the house for both models.

Y: Bay window kitchen is only available in the Cypress™ models.



X



Y

TOWING



Our tiny homes can be towed by a standard 3/4 or 1 ton truck depending on the size of your home and do not require any permits to tow. Trucks can easily be rented or purchased depending on your transportation needs. Our House-to-Go™ models are RV certified and have a street legal width of 8'6" and height of 13'4". Remember that your home should be titled, licensed and insured to tow legally as an RV. To prepare for towing, below are specifications about home weights and minimum tow vehicle requirements.

TOWING SPECIFICS	18'	20'	24'	Mica™ 20'
Dry Weight	8,000	8,800	10,500	10,000
GVWR	9,990	9,990	9,990	12,000
Tongue Weight	800-1,485	880-1,485	1,050-2,250	1,000-2,200
Truck Size	3/4 Ton	3/4 Ton	1 Ton	1 Ton
Hitch Type	Class V	Class V	Class V	Class V
Compatible Ball Size	2-5/16"			

Tumbleweed house weights vary by size. Dry weight refers to the home and trailer combined weight. GVWR or gross vehicle weight rating refers to maximum allowable weight of the combined home, trailer and personal belongings. Tongue weight refers to weight carried by the hitch rather than the wheels of the trailer. Insufficient tongue weight is the primary reason it's difficult for 1/2 ton trucks to tow Tumbleweeds. The compatible ball size is 2-5/16" for all Tumbleweed house trailers.



READY-MADE



TINY HOUSE STYLE



CONSTRUCTION DVD



AMISH BARN RAISER™



WORKSHOPS



TUMBLEWEED TRAILER™



BUILDING PLANS

DREAM BIG LIVE TINY™

A 2-DAY WORKSHOP

SAVE TIME, MONEY, & THE ENVIRONMENT

Do you dream of building your own tiny home, simplifying your life and freeing yourself from hefty financial commitments? But you're not sure how or even where to start? Not to worry, now we can teach you our success stories...at a workshop near you!

Tumbleweed's 2-day workshop is packed with all the insightful and extensive information you'll need to design and build your very own tiny home—setting you on a path to a simplified, economically-balanced, environmentally-friendly life-style.



Skillfully presented by actual Tumbleweed home owners/builders—who happily share their stories and experiences on subjects such as choosing the appropriate trailer base, selecting green materials, and the importance of using the right tools, etc.—these workshops cover every aspect of tiny house building and living.

You'll be provided with comprehensive, detailed information on tiny home building that you can't learn anywhere else—and you'll get to meet many other like-minded people in a fun and engaging setting and mixer.

So join us at an up-coming Tumbleweed Workshop and start redesigning your life. We look forward to seeing you there!

WHAT YOU'LL LEARN

Workshop - a class or series of classes in which a small group of people learn the methods and skills used in doing something.
Merriam-Webster Dictionary



Planning Your Build

Create your game plan to save you money and time. Get expert advice firsthand.



Tiny House Design

Classic looks, state of the art design, old world mobility for tomorrow's lifestyle.



Trailers

Your foundation and your freedom—discover the best way to connect your home to your trailer.



Framing & Sheathing

Make it strong. Make it reliable. And make it last for 50 years.



Roofing, Windows, Doors

Learn how to protect your home with a tight dry envelope.



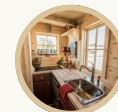
Siding and Trim

Do it right and do it in style with recycled or new materials.



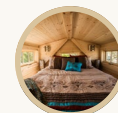
Systems

From composting to solar to organic insulation, we have answers to your questions.



Interior Finish

Express your personal style; create a beautiful, comfortable and cozy home.



Downsizing

Get rid of the clutter and make space for what's really important.

PAGE

INTENTIONALLY

LEFT

BLANK