

Herring Substation

Lazelle Substation

Legend

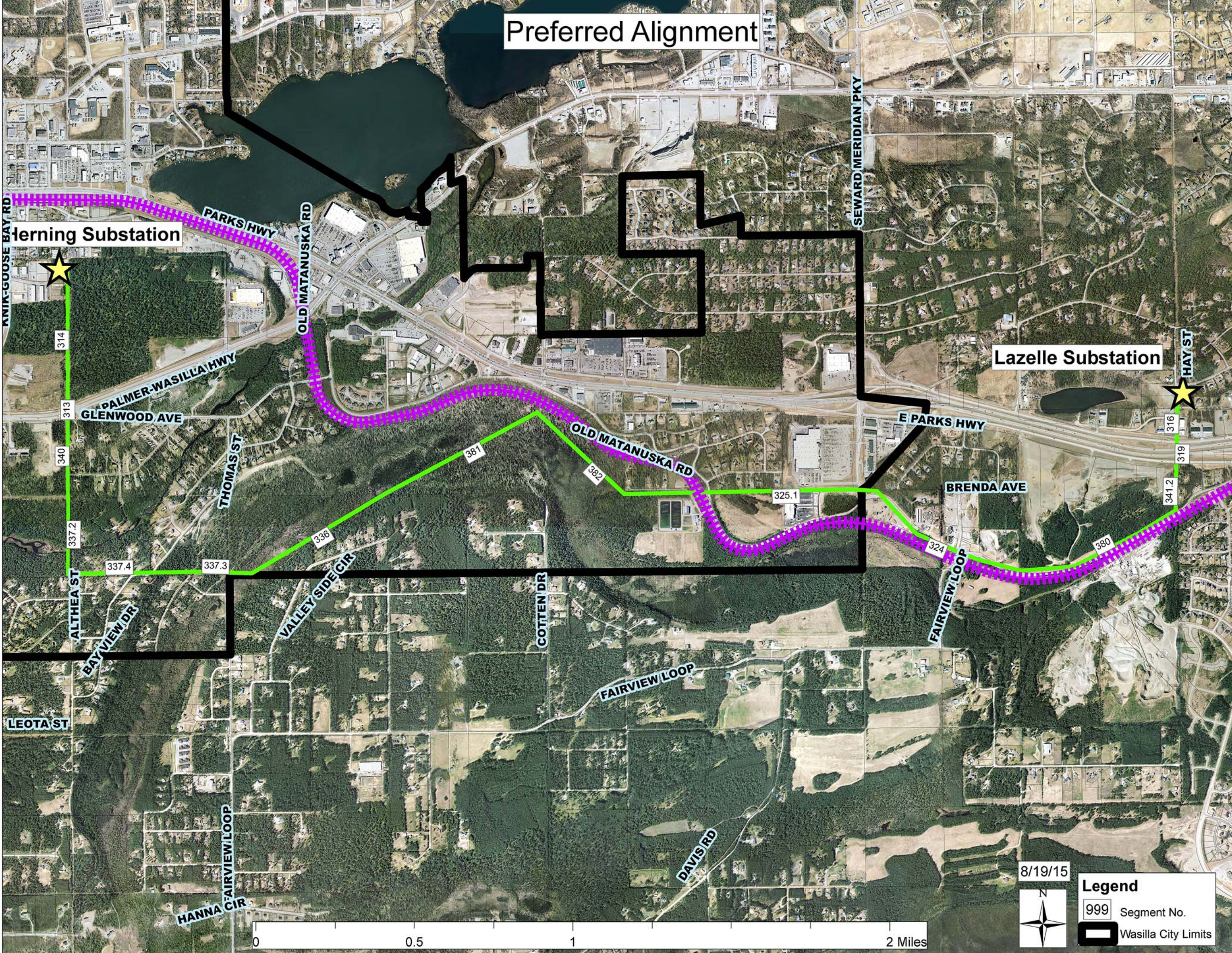
- r Route
- Preferred & Alt 2
- Preferred & Alt 1
- All Routes

10/8/15

# Preferred Alignment

Herring Substation

Lazelle Substation



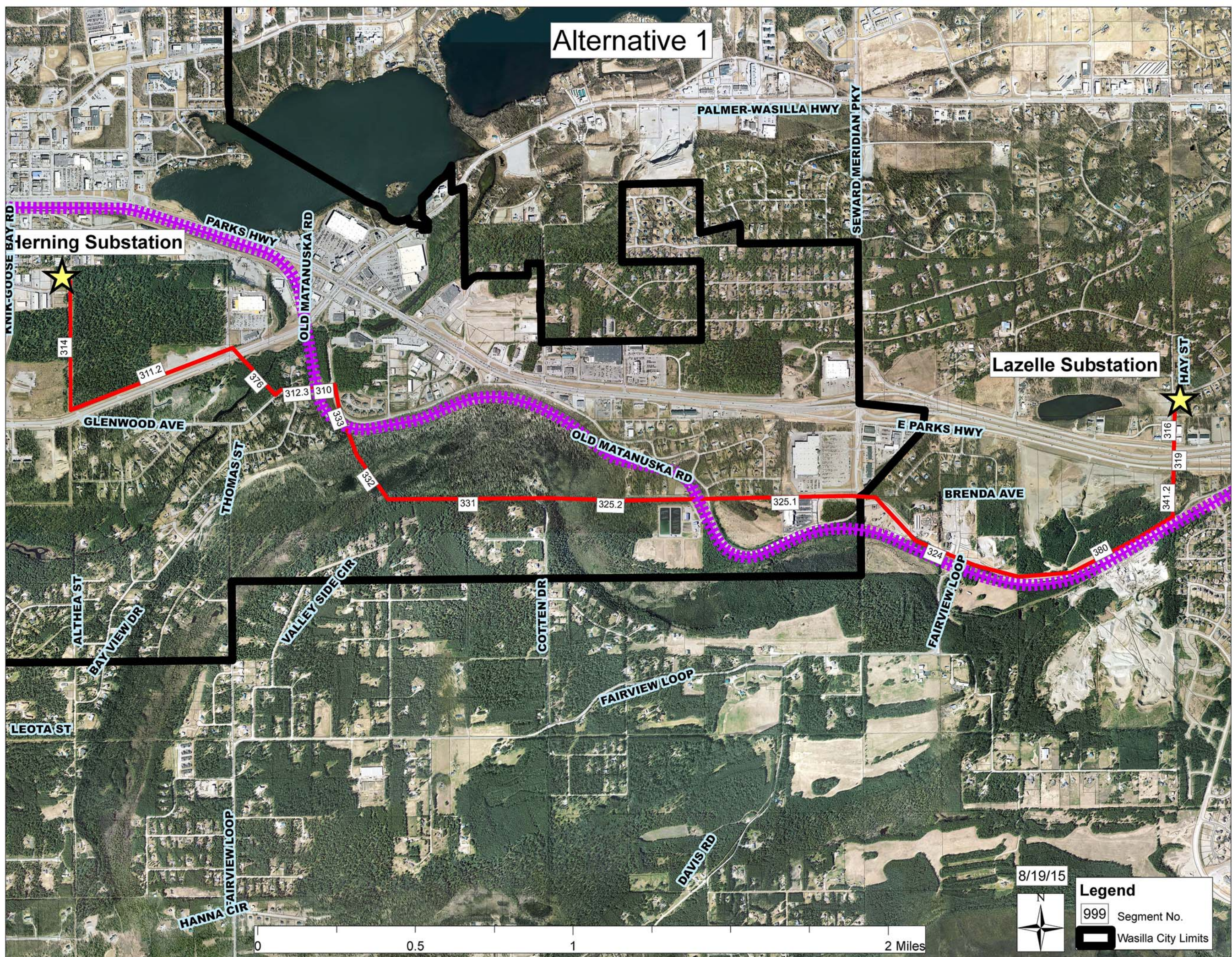
8/19/15



### Legend

- 999 Segment No.
- Wasilla City Limits

# Alternative 1



Herring Substation

Lazelle Substation

8/19/15



**Legend**

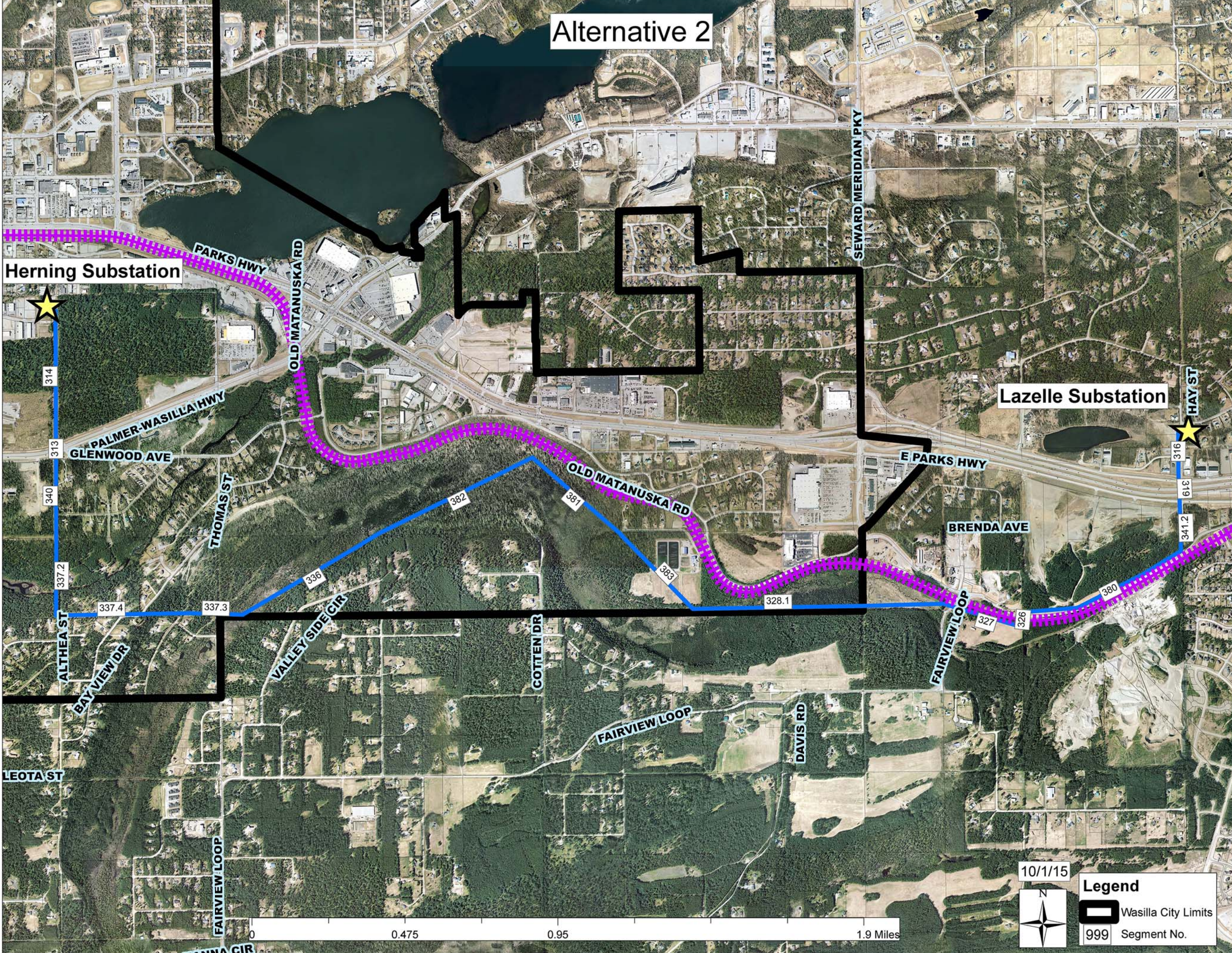
- 999 Segment No.
- Wasilla City Limits



# Alternative 2

Herning Substation


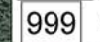
Lazelle Substation



10/1/15



### Legend

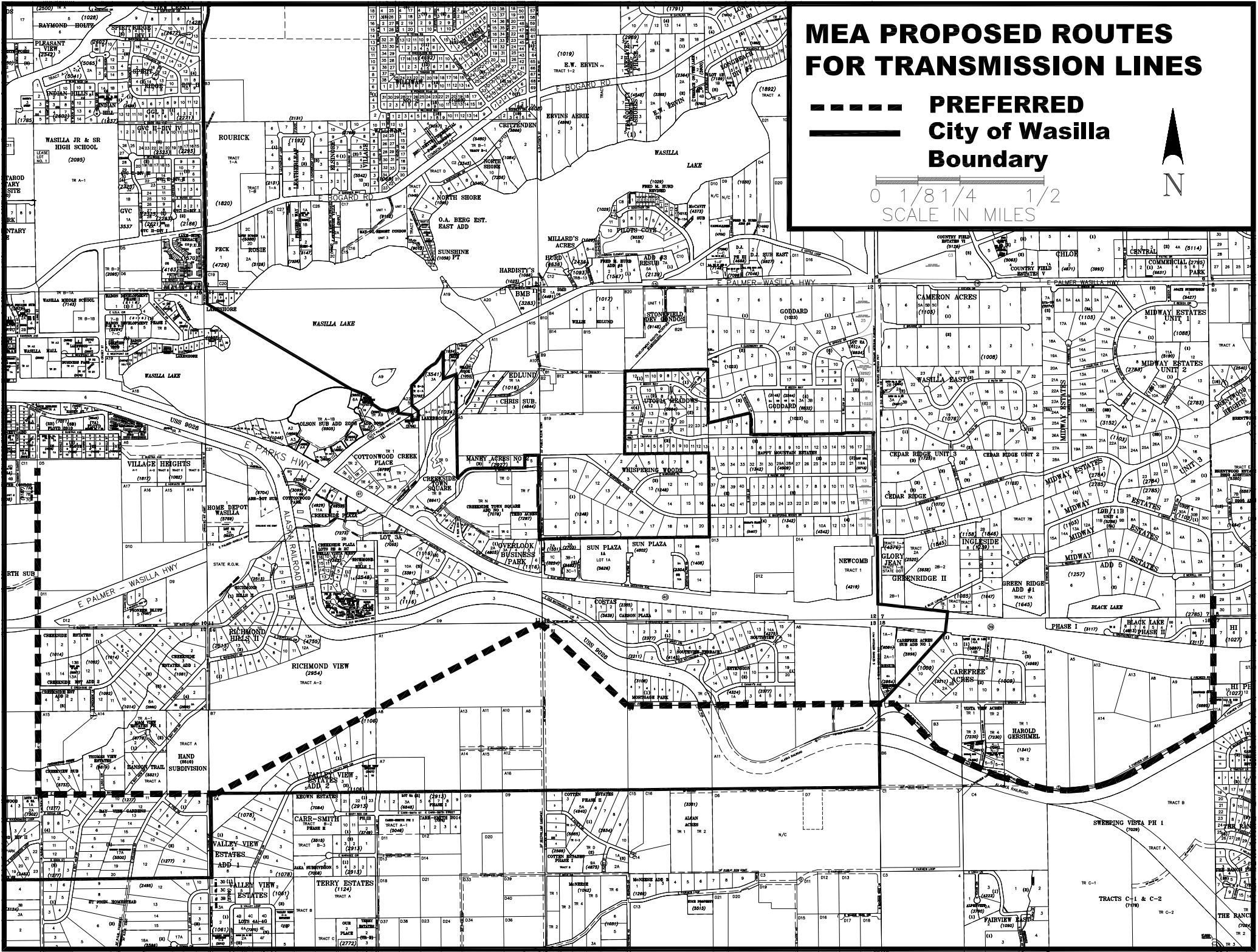
-  Wasilla City Limits
-  Segment No.

0 0.475 0.95 1.9 Miles

# MEA PROPOSED ROUTES FOR TRANSMISSION LINES

----- PREFERRED  
—— City of Wasilla  
Boundary

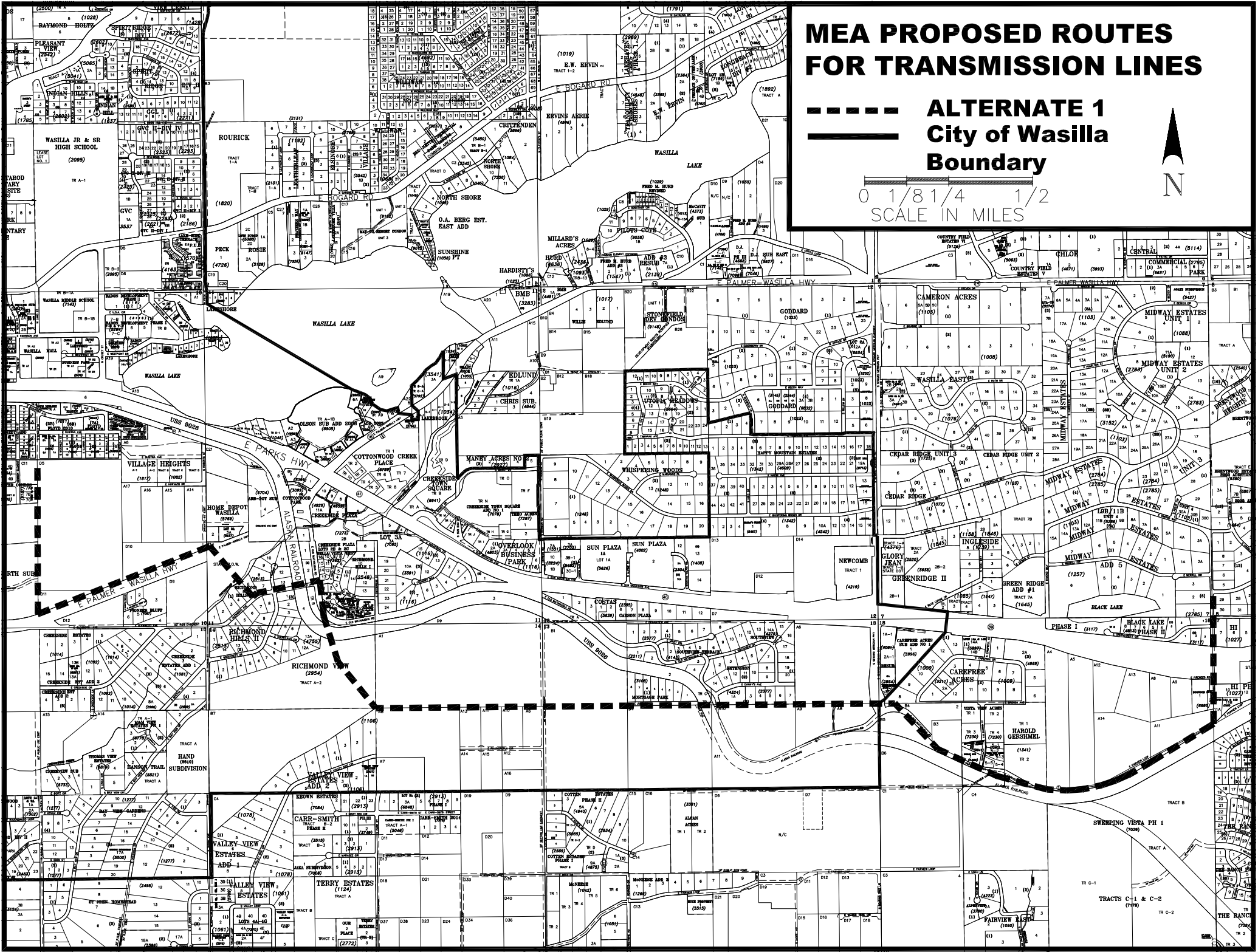
0 1/8 1/4 1/2  
SCALE IN MILES



# MEA PROPOSED ROUTES FOR TRANSMISSION LINES

----- ALTERNATE 1  
—— City of Wasilla  
Boundary

0 1/8 1/4 1/2  
SCALE IN MILES



# MEA PROPOSED ROUTES FOR TRANSMISSION LINES

----- ALTERNATE 2  
—— City of Wasilla  
Boundary

0 1/8 1/4 1/2  
SCALE IN MILES

