

By: Planning  
Public Hearing: 03/14/17  
Adopted: 03/14/17

**WASILLA PLANNING COMMISSION  
RESOLUTION SERIAL NO. 17-03**

**A RESOLUTION OF THE WASILLA PLANNING COMMISSION APPROVING THE  
CLEARING OF APPROXIMATELY 79 PERCENT OF TRACT 2, VISTA ROSE  
SUBDIVISION, PER WMC 16.33.050(A)(2).**

WHEREAS, Cameron Johnson, ARC Land Development, LLC, submitted a request for a waiver/modification on February 14, 2017, along with a site plan showing the vegetated areas of the parcel (existing and proposed); and

WHEREAS, a notice of the Planning Commission public hearing was published in the Frontiersman on March 5, 2017; and

WHEREAS, the Wasilla Planning Commission conducted a public hearing taking into account the information submitted by the applicant, the information contained in the staff report, written and verbal testimony, the applicable provisions of the Wasilla Municipal Code and Comprehensive Plan, and other pertinent information brought before them; and

NOW THEREFORE BE IT RESOLVED, that the Wasilla Planning Commission, after due consideration of the information submitted by the applicant, the information contained in the staff report, written and verbal testimony, the applicable provisions of the Wasilla Municipal Code and Comprehensive Plan, and other pertinent information brought before them, grants a waiver with the following conditions:

1. Landscaping and vegetation on the site must be installed and maintained in perpetuity as shown on the site plan dated February 13, 2017, attached as Exhibit A to Resolution Serial No. 15-18(AM), as required in WMC 16.33.060.
2. The applicant must provide the landscape guarantee required in WMC 16.33.040 prior to any clearing and/or construction on the lot.

ADOPTED by the Wasilla Planning Commission on March 14, 2017.

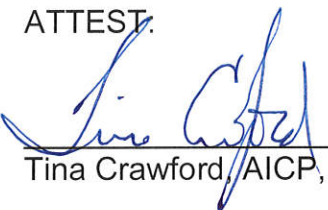
APPROVED:



---

Jessica Dean, Chairman

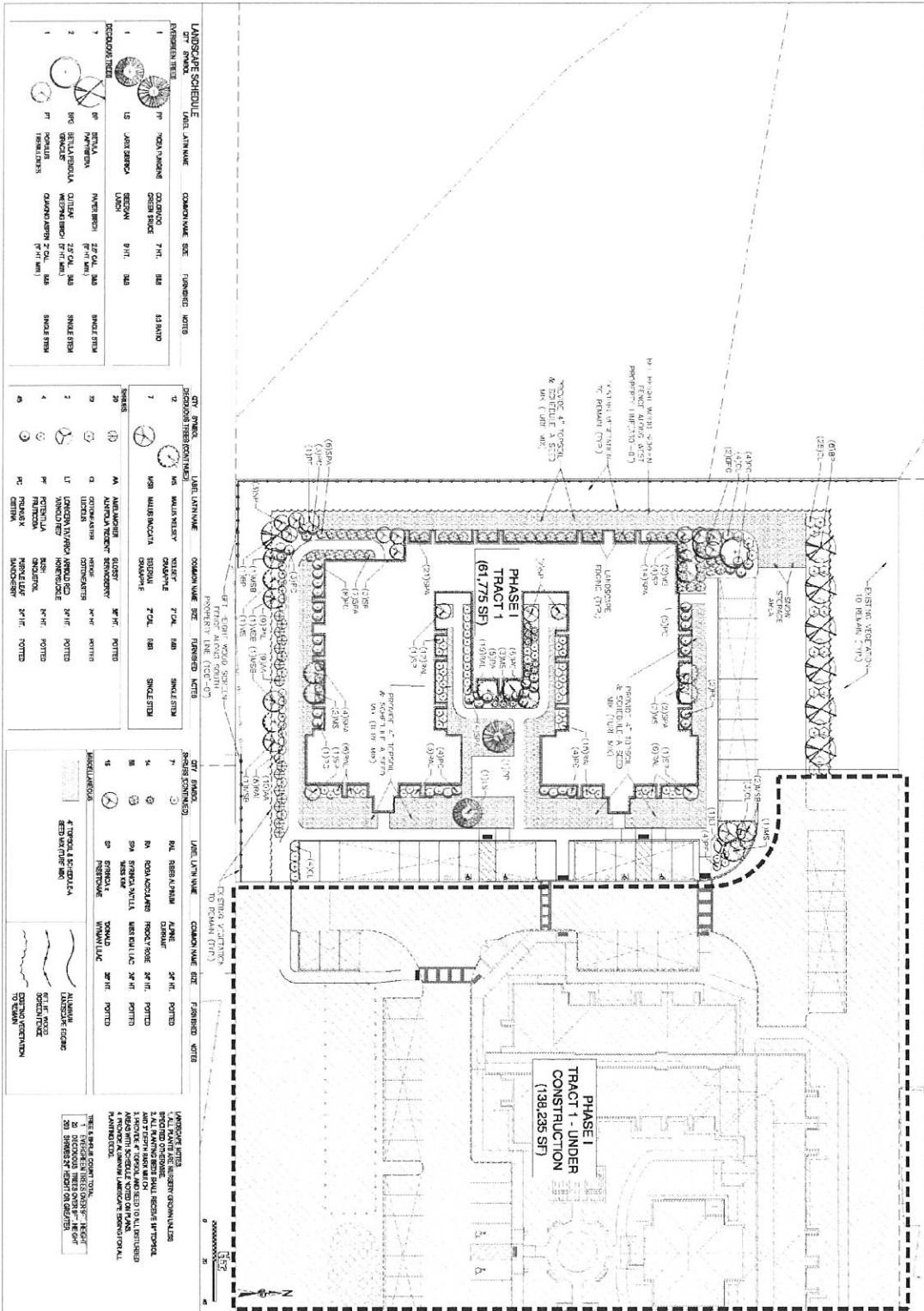
ATTEST:



---

Tina Crawford, AICP, City Planner

VOTE: Passed Unanimously



**LANDSCAPE SCHEDULE**

| QTY | SYMBOL | LANDSCAPE SCHEDULE | COMMON NAME | SIZE | FINISHED | NOTES |
|-----|--------|--------------------|-------------|------|----------|-------|
| 1   | 1      | 1                  | 1           | 1    | 1        | 1     |
| 1   | 2      | 2                  | 2           | 2    | 2        | 2     |
| 1   | 3      | 3                  | 3           | 3    | 3        | 3     |
| 1   | 4      | 4                  | 4           | 4    | 4        | 4     |
| 1   | 5      | 5                  | 5           | 5    | 5        | 5     |
| 1   | 6      | 6                  | 6           | 6    | 6        | 6     |
| 1   | 7      | 7                  | 7           | 7    | 7        | 7     |
| 1   | 8      | 8                  | 8           | 8    | 8        | 8     |
| 1   | 9      | 9                  | 9           | 9    | 9        | 9     |
| 1   | 10     | 10                 | 10          | 10   | 10       | 10    |
| 1   | 11     | 11                 | 11          | 11   | 11       | 11    |
| 1   | 12     | 12                 | 12          | 12   | 12       | 12    |
| 1   | 13     | 13                 | 13          | 13   | 13       | 13    |
| 1   | 14     | 14                 | 14          | 14   | 14       | 14    |
| 1   | 15     | 15                 | 15          | 15   | 15       | 15    |
| 1   | 16     | 16                 | 16          | 16   | 16       | 16    |
| 1   | 17     | 17                 | 17          | 17   | 17       | 17    |
| 1   | 18     | 18                 | 18          | 18   | 18       | 18    |
| 1   | 19     | 19                 | 19          | 19   | 19       | 19    |
| 1   | 20     | 20                 | 20          | 20   | 20       | 20    |

**QTY SYMBOL LANDSCAPE SCHEDULE COMMON NAME SIZE FINISHED NOTES**

| QTY | SYMBOL | LANDSCAPE SCHEDULE | COMMON NAME | SIZE | FINISHED | NOTES |
|-----|--------|--------------------|-------------|------|----------|-------|
| 1   | 1      | 1                  | 1           | 1    | 1        | 1     |
| 1   | 2      | 2                  | 2           | 2    | 2        | 2     |
| 1   | 3      | 3                  | 3           | 3    | 3        | 3     |
| 1   | 4      | 4                  | 4           | 4    | 4        | 4     |
| 1   | 5      | 5                  | 5           | 5    | 5        | 5     |
| 1   | 6      | 6                  | 6           | 6    | 6        | 6     |
| 1   | 7      | 7                  | 7           | 7    | 7        | 7     |
| 1   | 8      | 8                  | 8           | 8    | 8        | 8     |
| 1   | 9      | 9                  | 9           | 9    | 9        | 9     |
| 1   | 10     | 10                 | 10          | 10   | 10       | 10    |
| 1   | 11     | 11                 | 11          | 11   | 11       | 11    |
| 1   | 12     | 12                 | 12          | 12   | 12       | 12    |
| 1   | 13     | 13                 | 13          | 13   | 13       | 13    |
| 1   | 14     | 14                 | 14          | 14   | 14       | 14    |
| 1   | 15     | 15                 | 15          | 15   | 15       | 15    |
| 1   | 16     | 16                 | 16          | 16   | 16       | 16    |
| 1   | 17     | 17                 | 17          | 17   | 17       | 17    |
| 1   | 18     | 18                 | 18          | 18   | 18       | 18    |
| 1   | 19     | 19                 | 19          | 19   | 19       | 19    |
| 1   | 20     | 20                 | 20          | 20   | 20       | 20    |

**QTY SYMBOL LANDSCAPE SCHEDULE COMMON NAME SIZE FINISHED NOTES**

| QTY | SYMBOL | LANDSCAPE SCHEDULE | COMMON NAME | SIZE | FINISHED | NOTES |
|-----|--------|--------------------|-------------|------|----------|-------|
| 1   | 1      | 1                  | 1           | 1    | 1        | 1     |
| 1   | 2      | 2                  | 2           | 2    | 2        | 2     |
| 1   | 3      | 3                  | 3           | 3    | 3        | 3     |
| 1   | 4      | 4                  | 4           | 4    | 4        | 4     |
| 1   | 5      | 5                  | 5           | 5    | 5        | 5     |
| 1   | 6      | 6                  | 6           | 6    | 6        | 6     |
| 1   | 7      | 7                  | 7           | 7    | 7        | 7     |
| 1   | 8      | 8                  | 8           | 8    | 8        | 8     |
| 1   | 9      | 9                  | 9           | 9    | 9        | 9     |
| 1   | 10     | 10                 | 10          | 10   | 10       | 10    |
| 1   | 11     | 11                 | 11          | 11   | 11       | 11    |
| 1   | 12     | 12                 | 12          | 12   | 12       | 12    |
| 1   | 13     | 13                 | 13          | 13   | 13       | 13    |
| 1   | 14     | 14                 | 14          | 14   | 14       | 14    |
| 1   | 15     | 15                 | 15          | 15   | 15       | 15    |
| 1   | 16     | 16                 | 16          | 16   | 16       | 16    |
| 1   | 17     | 17                 | 17          | 17   | 17       | 17    |
| 1   | 18     | 18                 | 18          | 18   | 18       | 18    |
| 1   | 19     | 19                 | 19          | 19   | 19       | 19    |
| 1   | 20     | 20                 | 20          | 20   | 20       | 20    |

**LANDSCAPE NOTES**

1. ALL PLANTING TO BE INSTALLED BY CONTRACTOR.
2. ALL PLANTING SHALL BE INSTALLED IN ACCORDANCE WITH THE LANDSCAPE PLAN AND FIELD TO ALL ENTIRELY PLANTED AREAS WITH SCHEDULED VARIOUS PLANTING.
3. ALL PLANTING SHALL BE INSTALLED IN ACCORDANCE WITH THE LANDSCAPE PLAN AND FIELD TO ALL ENTIRELY PLANTED AREAS WITH SCHEDULED VARIOUS PLANTING.
4. ALL PLANTING SHALL BE INSTALLED IN ACCORDANCE WITH THE LANDSCAPE PLAN AND FIELD TO ALL ENTIRELY PLANTED AREAS WITH SCHEDULED VARIOUS PLANTING.
5. ALL PLANTING SHALL BE INSTALLED IN ACCORDANCE WITH THE LANDSCAPE PLAN AND FIELD TO ALL ENTIRELY PLANTED AREAS WITH SCHEDULED VARIOUS PLANTING.
6. ALL PLANTING SHALL BE INSTALLED IN ACCORDANCE WITH THE LANDSCAPE PLAN AND FIELD TO ALL ENTIRELY PLANTED AREAS WITH SCHEDULED VARIOUS PLANTING.
7. ALL PLANTING SHALL BE INSTALLED IN ACCORDANCE WITH THE LANDSCAPE PLAN AND FIELD TO ALL ENTIRELY PLANTED AREAS WITH SCHEDULED VARIOUS PLANTING.
8. ALL PLANTING SHALL BE INSTALLED IN ACCORDANCE WITH THE LANDSCAPE PLAN AND FIELD TO ALL ENTIRELY PLANTED AREAS WITH SCHEDULED VARIOUS PLANTING.
9. ALL PLANTING SHALL BE INSTALLED IN ACCORDANCE WITH THE LANDSCAPE PLAN AND FIELD TO ALL ENTIRELY PLANTED AREAS WITH SCHEDULED VARIOUS PLANTING.
10. ALL PLANTING SHALL BE INSTALLED IN ACCORDANCE WITH THE LANDSCAPE PLAN AND FIELD TO ALL ENTIRELY PLANTED AREAS WITH SCHEDULED VARIOUS PLANTING.
11. ALL PLANTING SHALL BE INSTALLED IN ACCORDANCE WITH THE LANDSCAPE PLAN AND FIELD TO ALL ENTIRELY PLANTED AREAS WITH SCHEDULED VARIOUS PLANTING.
12. ALL PLANTING SHALL BE INSTALLED IN ACCORDANCE WITH THE LANDSCAPE PLAN AND FIELD TO ALL ENTIRELY PLANTED AREAS WITH SCHEDULED VARIOUS PLANTING.
13. ALL PLANTING SHALL BE INSTALLED IN ACCORDANCE WITH THE LANDSCAPE PLAN AND FIELD TO ALL ENTIRELY PLANTED AREAS WITH SCHEDULED VARIOUS PLANTING.
14. ALL PLANTING SHALL BE INSTALLED IN ACCORDANCE WITH THE LANDSCAPE PLAN AND FIELD TO ALL ENTIRELY PLANTED AREAS WITH SCHEDULED VARIOUS PLANTING.
15. ALL PLANTING SHALL BE INSTALLED IN ACCORDANCE WITH THE LANDSCAPE PLAN AND FIELD TO ALL ENTIRELY PLANTED AREAS WITH SCHEDULED VARIOUS PLANTING.
16. ALL PLANTING SHALL BE INSTALLED IN ACCORDANCE WITH THE LANDSCAPE PLAN AND FIELD TO ALL ENTIRELY PLANTED AREAS WITH SCHEDULED VARIOUS PLANTING.
17. ALL PLANTING SHALL BE INSTALLED IN ACCORDANCE WITH THE LANDSCAPE PLAN AND FIELD TO ALL ENTIRELY PLANTED AREAS WITH SCHEDULED VARIOUS PLANTING.
18. ALL PLANTING SHALL BE INSTALLED IN ACCORDANCE WITH THE LANDSCAPE PLAN AND FIELD TO ALL ENTIRELY PLANTED AREAS WITH SCHEDULED VARIOUS PLANTING.
19. ALL PLANTING SHALL BE INSTALLED IN ACCORDANCE WITH THE LANDSCAPE PLAN AND FIELD TO ALL ENTIRELY PLANTED AREAS WITH SCHEDULED VARIOUS PLANTING.
20. ALL PLANTING SHALL BE INSTALLED IN ACCORDANCE WITH THE LANDSCAPE PLAN AND FIELD TO ALL ENTIRELY PLANTED AREAS WITH SCHEDULED VARIOUS PLANTING.

|                    |  |   |  |                                    |                                     |   |                                    |                                     |   |
|--------------------|--|---|--|------------------------------------|-------------------------------------|---|------------------------------------|-------------------------------------|---|
| <p><b>L1.2</b></p> | <p><b>PROJECT</b></p> <p>VISTA ROSE SENIOR APARTMENTS PHASE II (LANDSCAPE PLAN)</p> <p>W. BLUE COURT &amp; N. LUCKIE ST. WASH DC</p> | <p><b>DG GROUP ARCHITECTURE PLLC</b></p> <p>600 E. 5TH STREET SUITE 100<br/>DENVER CO 80202<br/>TEL: 303.733.1111 FAX: 303.733.1112</p> <p>ALASKA - ARIZONA - CALIFORNIA - COLORADO - CONNECTICUT - FLORIDA - GEORGIA - ILLINOIS - INDIANA - IOWA - KANSAS - KENTUCKY - LOUISIANA - MARYLAND - MASSACHUSETTS - MICHIGAN - MINNESOTA - MISSISSIPPI - MISSOURI - MONTANA - NEBRASKA - NEVADA - NEW HAMPSHIRE - NEW JERSEY - NEW YORK - NORTH CAROLINA - NORTH DAKOTA - OHIO - OKLAHOMA - OREGON - PENNSYLVANIA - RHODE ISLAND - SOUTH CAROLINA - SOUTH DAKOTA - TEXAS - UTAH - VIRGINIA - WISCONSIN - WYOMING</p> | <p><b>The Boulder Co</b></p> <p>1075 Cherry St., Suite 211<br/>Boulder, Colorado 80502<br/>Tel: 303.440.4444 Fax: 303.440.4445</p> | <p><b>DATE</b></p> <p>01/15/11</p> | <p><b>SCALE</b></p> <p>AS SHOWN</p> | <p><b>PROJECT NO.</b></p> <p>11-001</p> | <p><b>DATE</b></p> <p>01/15/11</p> | <p><b>SCALE</b></p> <p>AS SHOWN</p> | <p><b>PROJECT NO.</b></p> <p>11-001</p> |
|                    |  |   |  |                                    |                                     |   |                                    |                                     |   |

