

By: Public Works Department
Adopted: November 27, 2017
Yes: Burney, Dryden, Graham, Ledford, O'Barr
No: None
Absent: Harvey

**City of Wasilla
Resolution Serial No. 17-32**

A Resolution Of The Wasilla City Council Transferring Funds Within An Accounting Fund In The Amount of \$250,000 For Road's Department Equipment Purchases.

WHEREAS, the Road's Department currently has \$250,000 budgeted for a new sanding/plow truck in the fiscal year 2018 Capital Improvement Program; and

WHEREAS, the Road's Department has successfully rebuilt its 1997 Freightliner with a new plow, wing and sander, and a new sanding/plow truck is not needed at this time; and

WHEREAS, the Road's Department is proposing to purchase other needed equipment for road maintenance using the fiscal year 2018 Capital Improvement Program Road's Budget.

NOW, THEREFORE BE IT RESOLVED, that the Wasilla City Council authorizes the transfer of funds for new road's maintenance equipment to the following accounts:

110-4320-432.45-xx	Self-Propelled Paint Striper	\$70,000
110-4320-432.45-xx	MMA Pavement Marking Machine	\$60,000
110-4320-432.45-xx	Equipment Trailer	\$15,000
110-4320-432.45-xx	Trailer-Mounted 50ft Main-Lift	\$60,000
110-4320-432.45-xx	Flex Wing Rotary Mower	\$45,000

BE IT FURTHER RESOLVED, that the source of funding is as follows:

110-4320-432.45-72	Sanding Truck	\$250,000
--------------------	---------------	-----------

ADOPTED by the Wasilla City Council on November 27, 2017.


BERT L. COTTLE, Mayor

ATTEST:


JAMIE NEWMAN, MMC, City Clerk

[SEAL]

WASILLA

• ALASKA •

CITY COUNCIL LEGISLATION STAFF REPORT

Resolution Serial No. 17-32: Transferring Funds Within An Accounting Fund In The Amount of \$250,000 For Roads Department Equipment Purchases.

Originator: Public Works Director

Date: October 30, 2017

Agenda of: November 27, 2017

Route to:	Department Head	Signature	Date
X	Public Works Director		11/1/17
X	Finance Director		11.1.17
X	Deputy Administrator		11/1/17
X	City Clerk		11/1/17

Reviewed by Mayor Bert L. Cottle:

 11/02/2017**Fiscal Impact:** yes or no \$250,000**Account name/number:** Sanding Truck/110-4320-432.45-72**Attachments:** Equipment Specifications (5 pages)
Resolution Serial No. 17-32 (2 pages)

Summary Statement: The Roads Department is in need of new equipment to improve service, reduce rental costs, and be less reliant on contracted services. The following is a description of the proposed equipment proposed for this funding transfer:

- 1) Self-Propelled Paint Striper: The existing striper is 10 years old and the running gear has reached the end of its useful life. This machine is used to annually paint white and yellow pavement markings in downtown and outlying areas.
- 2) MMA Pavement Marking Machine: The Roads Department has experimented with the use of Methyl Methacrylate (MMA) cold plastic road marking paint over the last 5 years on white STOP bars by hand. This entails grinding out the pavement a small amount and filling it in with MMA for more permanent pavement marking. The Roads Department is proposing to expand this program to include all markings within an intersection with the purchase of a MMA pavement marking machine to eliminate the need for annual painting.
- 3) Equipment Trailer: The Roads Department equipment trailer is no longer in use due to a cracked frame at its hinge point on the tilt trailer. Proposed is the purchase of a dual axel trailer to haul equipment up to 20,000 pounds for road maintenance.
- 4) Trailer-Mounted 50ft Man-Lift: The Roads Department routinely rents man-lifts for street light repairs. This equipment purchase will eliminate the need for rentals which will provide a

savings to the operating budget and provide for a more timely response for street light repairs as rentals are not always readily available.

5) Flex Wing Rotary Mower: This is a pull behind mower that can be attached to the Roads Department brushing tractor. This mower can cut low brush up to 15 feet wide in one pass. This is the same type of mower the Alaska of Department of Transportation uses to maintain rights-of-way. This will be an added feature to the brushing tractor that has a 4 foot diameter brush cutter on an extendable boom.

Recommended Action: Adopt resolution.



Manufacturers of High Quality Heavy Duty Pavement Marking Equipment and Snow Removal Equipment

Kelly-Creswell Products
Proudly Manufactured
in the USA Since 1937.



Home | Stripping Equipment ▾ | Stripping Guns ▾ | Electronic Equipment ▾ | Stripping Supplies ▾ | Services ▾ | Snow Removal | Used Equipment | Contact |

Kelly-Creswell Intermediate Series WV-50C-AL Self Propelled Airless Striper

[Stripping Equipment](#) > [Intermediate](#) > WV-50C-AL

- Overview
- Key Selling Points
- Specifications
- Optional Equipment
- Photos
- Videos
- Literature

The Kelly-Creswell WV-50C-AL is a self contained, single operator center & edgeline highway striping machine. Striping speeds up to 10 mph, over the road speeds of 25 mph. Operates in own lane of traffic maintaining traffic flow. Compact, maneuverable offering features and performance of larger truck mounted units at an affordable price. Operate one and you will understand why Kelly-Creswell is the name that has defined striping since 1937.

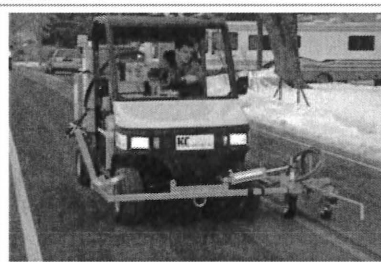


WV-50C-AL Self Propelled Airless Striper

- 50 gallon paint tank.
- 250 lb. pressure bead tank.
- 3.1 GPM hydraulic high pressure airless spray system.
- Reversible gun carriage with pneumatic lift.
- Mark 40D skip line controller with footage counters
- (2)KC-700 with reverse-a-clean tips, (2)KC-600 bead guns
- Telescoping pointer with rubber drag strap



Self contained center & edgeline striper



Maintains traffic flow, 10' turning radius



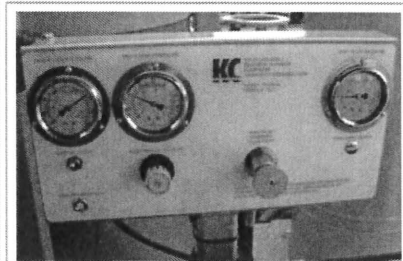
Operators station with great visibility



Rugged dual wheel gun carriage



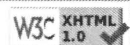
Reversible gun carriage



Simple controls

Get a Monthly Payment Quote >>>
QUICK QUOTE
Get an Instant Online Quote
An Equipment Leasing Company

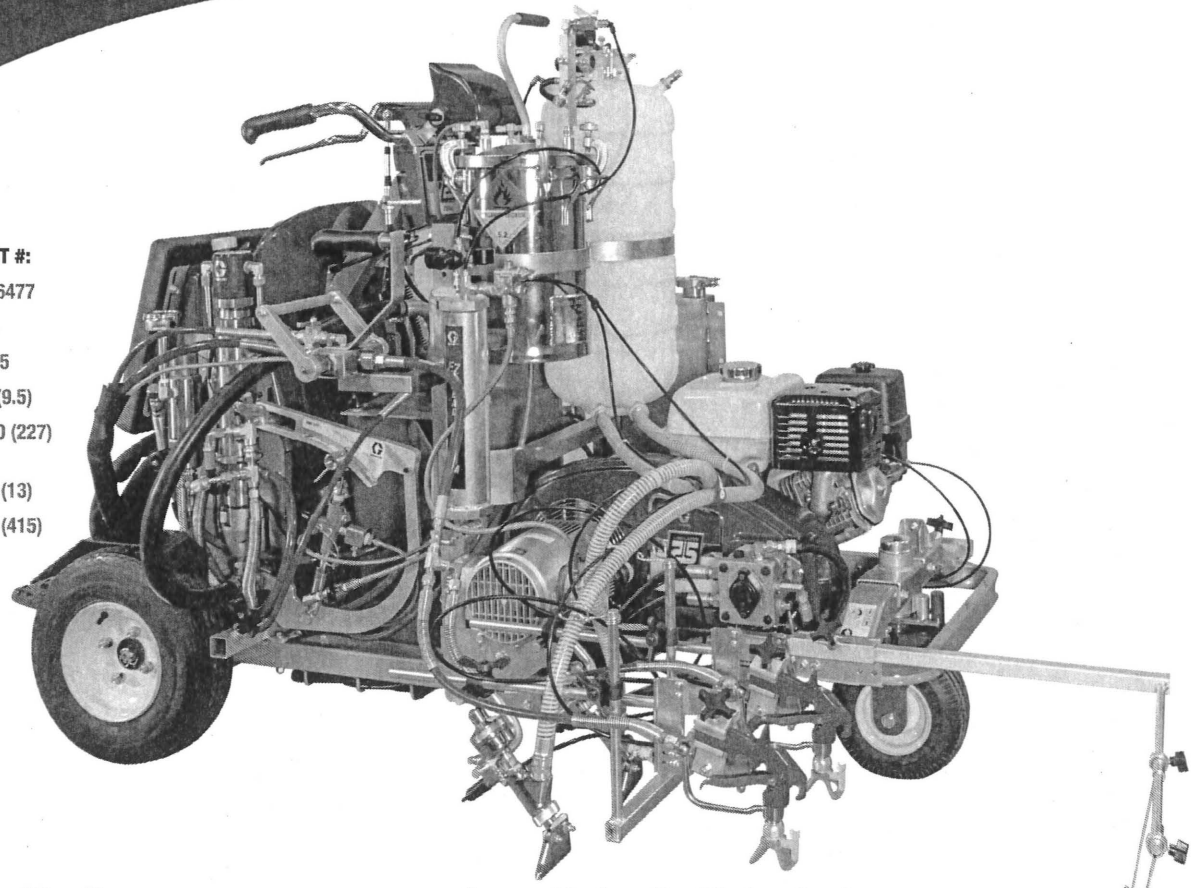
[Site Map](#) | [Disclaimer](#) | [Terms of Sale](#) | [About Kelly-Creswell](#)
All Content © 2011 Kelly-Creswell
1221 Groop Rd., Springfield OH 45504
Phone: 937-325-3978 | Toll Free: 800-372-9221 | Fax: 937-325-7067
Email: sales@kellycreswell.com



98:2 MMA Liner



Pavement Marking Machine



MMA Liner

DESCRIPTION	PART #:
MMA Liner	2006477
SPECIFICATIONS:	
MAX TIP SIZE:	0.055
MAX GPM (LPM):	2.5 (9.5)
MAX PSI (BAR):	3300 (227)
HONDA GX	
ENGINE CC (HP):	390 (13)
WEIGHT LBS (KG):	910 (415)

Programmed EnDiSys Monitor

For ratio assurance and flush timer.

Automatic Gun Control System

Manual or automatic paint and bead guns with the push of a button.

Electric Clutch System

Disengages engine for fast starting.

15 Gallon (57 L) Resin Feed Hopper

Easy to service & repair.

Honda® 360 GX Engine

Industry proven performance with the most demanded engine by contractors.

Endurance Piston Pump System

Long life pump provides precise flow for striping with MMA.

Rear Gun Mount System

Provides straighter long lines – perfect for bike paths, airports and other long line jobs.

Self-Centering Front Wheel

Eliminates one user interface for simpler operation.

Mix Manifold

Easily removable for precise stencil work.

Graco Hydraulic Motor System

Graco's no-stall hydraulic motor for uninterrupted performance.

BPO SST Graco Pump

Engineered for superior ratio control. Adjustments from 1.5 to 4.0%.

Flushable Static Mixer Assembly

Manifold is designed to prevent cross-over contamination and is easily flushable.

Pressurized Bead System

Consistent pressurized delivery of beads through Graco's standard bead module.

Solvent Flush System

2-Gallon (8 L) reservoir and air-operated-double diaphragm pump provides pressurized flushing capability of manifold, hose assembly and gun.

2 Gallon (8 L) BPO SST Tank

Polyethylene tank liners available for quick color change and easy clean-up.

15 Gallon Resin Hopper

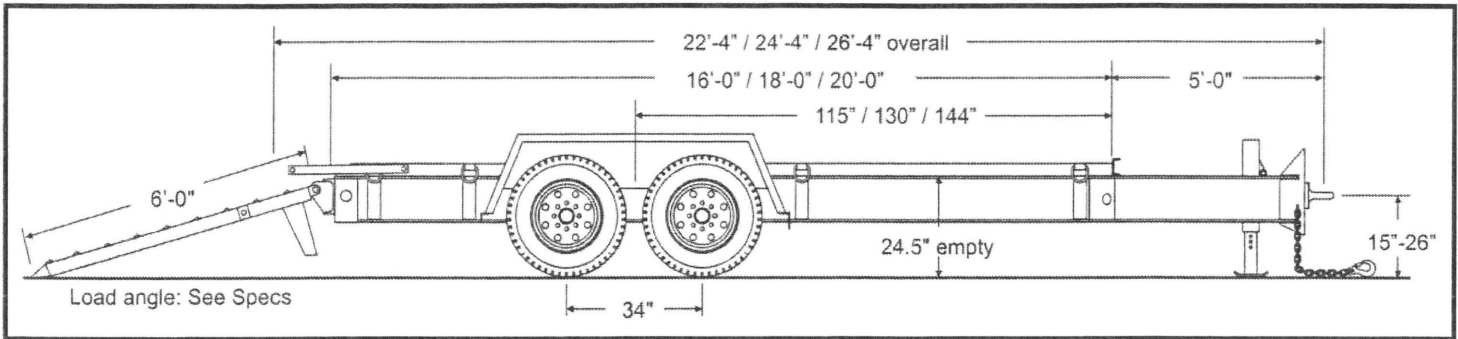
Extended striping time with large capacity hopper.

Effective Date: 2/1/2017

Drop-Deck/

Model:

T-18D



May be shown with options

STANDARD FEATURES

HITCH / TONGUE

- Adj. height, bolt-on coupler
- 3" pintle
- RV plug
- One-piece cold-formed frame rails
- Integrated storage tray
- 12K bolt-on, top-wind drop-leg parking jack
- Battery break-away kit w/tow charger & test light
- Safety chains w/hooks

FRAME / DECK

- 82" between fenders
- 24.5" deck height (unloaded)
- 10" I-beam main frame
- 3" Jr. I-beam crossmembers, 80,000 psi
- 2" nominal white oak wood deck
- 3" sides
- D-ring tie-downs (4 per side)
- 12 ga one-piece formed fender and inner panel

RAMPS / TAIL

- 18" x 6'-0" channel sides, cleated ladder style
- Load Angle: 18°
- Solid bar ramp hold-ups
- Spring-assist

AXLES / SUSPENSION

- Rubber-ride suspension axles
- (2) 10,000 lb. axles (4 wheels)
- Tires - 215/75R17.5, load range H, 16-ply
- 17.5" wheels, 8-bolt
- Electric brakes
- Forward self-adjusting brakes
- Oil bath hubs

LIGHTS / WIRING

- Rubber grommet mounted LED lights
- Sealed modular wiring

STANDARD FEATURES

- Limited Lifetime Frame Warranty*
- One-Year full Warranty*
- 5 Year Suspension Warranty*
- Weatherproof registration holder
- Two-component polyurethane primer and paint
- Trailer color: Equipment Black
- Ramp color: Equipment Red

*See web site for warranty details

*Weights and capacities vary depending upon options. Published weights are for reference only.

GAWR (lbs)	GVWR (lbs)	WEIGHT (lbs)	CAPACITY (lbs)	DECK WIDTH (in)	DECK LENGTH (ft)
20,000	22,400	4,400	18,000	82"	16'
20,000	22,600	4,600	18,000	82"	18'
20,000	22,800	4,800	18,000	82"	20'

Towmaster manufactures a complete line of trailers in several capacities. Listed weights and dimensions are approximate and can vary depending upon options installed. See VIN tag for GVWR. Check our website or see your authorized dealer for more information. Manufacturer reserves the right to modify, change or discontinue models or options as seen fit without obligation to previously sold units. Written warranty covers each trailer. Some items shown may be optional equipment.

Specifications

MODEL	TZ-50	
Measurements	US	Metric
Working height*	55 ft 6 in	16.92 m
Platform height	49 ft 6 in	15.09 m
Entry height	1 ft 8 in	.51 m
Horizontal reach	29 ft 2 in	8.89 m
Clear outreach	23 ft 1 in	7.04 m
Up and over clearance	22 ft	6.71 m
▲ Platform length	2 ft 2.8 in	.68 m
▲ Platform width	3 ft 8 in	1.12 m
▲ Height - stowed	6 ft 10 in	2.08 m
▲ Length - stowed	23 ft 6 in	7.16 m
▲ Width - stowed	5 ft 6 in	1.68 m
▲ Ground clearance - center	10 in	.25 m
▲ Length - outrigger footprint	14 ft 4 in	4.37 m
▲ Width - outrigger footprint	14 ft 4 in	4.37 m

Productivity

Lift capacity (ANSI, CSA) - standard	500 lbs	227 kg
Lift capacity (ANSI, CSA) - rotating platform	500 lbs	227 kg
Lift capacity (CE/AUS) - standard	440 lbs	200 kg
Lift capacity (CE/AUS) - rotating platform	440 lbs	200 kg
Jib boom	4 ft 1 in	1.25 m
Jib working range	135°	
Self leveling platform	2.5° standard	
Platform rotation option	160° hydraulic	
AC power to platform	standard	
Turntable rotation	359° non-continuous	
Outrigger leveling capability	11°	
Drive speed	0.85 mph	1.37 km/h
Gradeability**	20%	
Towing speed rate	60 mph	97 km/h
Tongue weight - ANSI, CSA	400 lbs	181 kg
Tongue weight - CE	220 lbs	100 kg
Surge and parking brakes	standard	
Controls	variable speed system	
Tires - ANSI, CSA	ST 225/75 R15	
Tires - CE	215 R14C	
Coupler	combination hitch	

Power

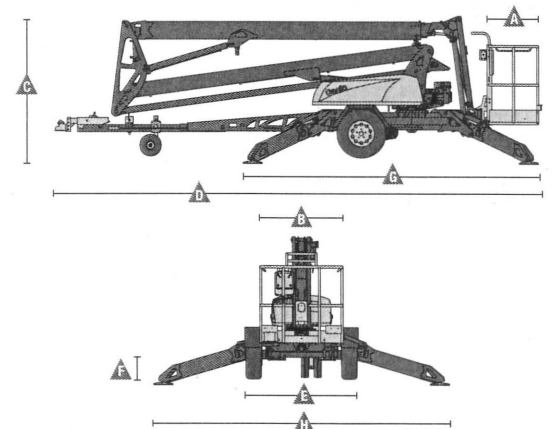
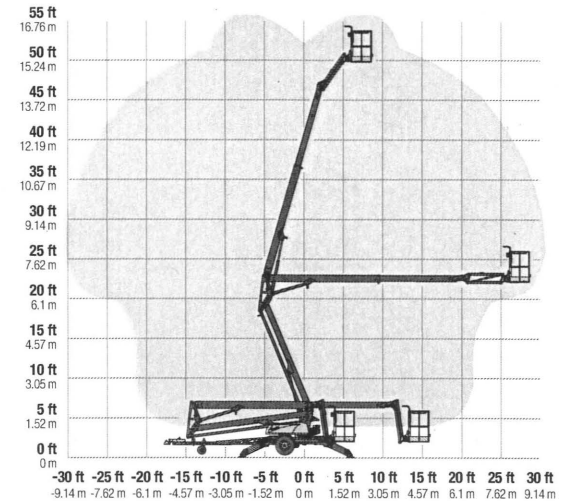
Power source - standard	24V DC (four 6V 225 Ah batteries)
Power source - drive option	24V DC (four 6V 244 Ah batteries)
Power source - option	Hybrid DC/Gas Honda 5.5 hp (4.1 kW)
Fuel tank capacity	.95 gal 3.6 L
Hydraulic tank capacity	4.75 gal 18 L
Hydraulic system capacity	8.0 gal 30 L

Weight***

ANSI, CSA, Australia	4,400 lbs	1,996 kg
CE	4,475 lbs	2,030 kg

Standards Compliance ANSI A92.2, CSA C225, EN 280, AS 1418.10

Range Of Motion TZ-50



* The metric equivalent of working height adds 2 m to platform height. U.S. adds 6 ft to platform height.

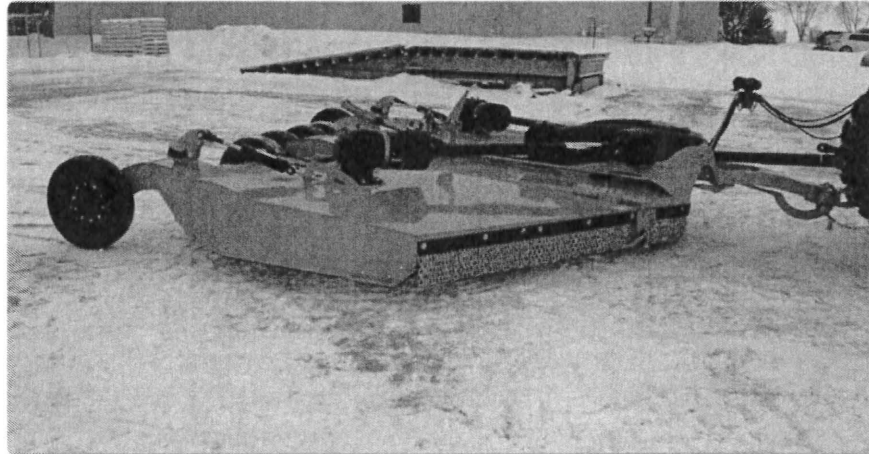
** Gradeability applies to driving on slopes. See operator's manual for details regarding slope ratings.

*** Weight will vary depending on options and/or country standards.

[Home](#)
[Video](#)
[All Products](#)
[Boom Mowers](#)
[Rotary Mowers](#)
[Flail Mowers](#)
[Truck Mount Mowers](#)
[Attachments](#)
[Specialty Mowing Equip](#)

[Product Literature](#)
[Product Manuals](#)

[Dealer Locator](#)
[Contact Us](#)
[Our Company](#)
[Industry Links](#)
[Dealer Corner](#)
[Tiger Parts](#)
[TM Corner](#)
[Login](#)



Flex-wing TK-120 & TK-180

The Tiger TK series of Flexwing Rotary mowers are the latest in computer enhanced engineering design with Tiger's proven performance. This series of Flexwing mowers are engineered to add flexibility, production and value to your tractor. In a single pass, your mower can devour 10 to 15 feet of the most demanding terrain with ease. Come take a look at what the competition has been trying to duplicate for years.

- TK series comes in 10" and 15" models.
- Deck protection rings come standard and protects the underside of the cutter deck. Clockwise rotation standard.
- Unique blade pan carrier and stump jumper, standard on TK-120 & TK-180
- Double row safety chains along front and rear of mower.
- Gear boxes have cast lower seal protection and monolithic housings.
- Designed for tractors with 540 PTO. (Optional 1000 PTO available).
- Narrow transport width allows the mower to be transported easily down narrow roads.

Specifications:

TK-120

- **Cutting width:** 126"
- **Overall width:** 133"
- **Overall length:** 183"
- **Transport width, min:** 88"
- **Transport height:** 90.5"
- **Tractor HP requirement (min):** 60 HP
- **Cutting height:** 2" to 14"
- **Ground clearance:** 13.5"

TK-180

- **Cutting width:** 180"
- **Overall width:** 186"
- **overall length:** 183"
- **Transport width, min:** 96"
- **Transport height:** 90.5"
- **Tractor HP requirement (min):** 60 HP
- **Cutting height:** 2" to 14"
- **Ground clearance:** 13.5"

[Return To Top](#)

Tiger Corporation Toll-Free: 800.843.6849 - Fax: 800.716.7620