



	Approved	Denied
Date Action Taken:	7/13/09	
Other:		
Verified by:	[Signature]	

WASILLA CITY COUNCIL ACTION MEMORANDUM

AM No. 09-33

TITLE: CONTRACT AWARD TO YUKON EQUIPMENT IN THE AMOUNT OF \$305,727 FOR A 2100 SERIES VACTOR TRUCK.

Agenda of: July 13, 2009

Date: June 30, 2009

Originator: Public Works Director

Route to:	Department	Signature/Date
	Chief of Police	
	Recreational and Cultural Services Manager	
X	Director of Public Works	[Signature] 6/30/09
X	Director of Finance	[Signature] 7-2-09
X	Deputy Administrator	[Signature]
X	City Clerk	[Signature]

REVIEWED BY MAYOR VERNE E. RUPRIGHT:

[Signature of Verne E. Rupright]

FISCAL IMPACT: yes or no Funds Available yes no

Account name/number: Vactor Truck/110-4320-420.45-54 \$300,000
Roads/001-4320-432.99-12 \$5,727

Attachments: Invitation to Bid (8 pp)

SUMMARY STATEMENT: Stimulus funding is available in the amount of \$300,000 for a new vactor truck from the Alaska Department of Environmental Conservation in the form of a loan with a provision for up to 100 percent principal forgiveness. The City of North Pole recently bid the same 2100 Series Vactor Truck the City of Wasilla is seeking to purchase. Yukon Equipment submitted the low bid as follows:

- 1) Yukon Equipment \$305,727
- 2) Bob's Services \$340,285
- 3) J&S Services \$356,785

The City is able to use the bid results from North Pole to purchase the vactor truck in accordance with WMC 5.08.100.B.8.

STAFF RECOMMENDATION: Approve the adoption of Action Memorandum 09-32 that authorizes purchase of new vactor truck from Yukon Equipment in the amount of \$305,727 subject to the execution of a \$300,000 loan agreement with the Alaska Department of Environmental Conservation.

Invitation for Bids Utility Jet-Vac Truck

City of North Pole
125 Snowman Lane
North Pole, AK 99705
907-488-2281

General Information

The City of North Pole is releasing this request for bids (RFB) to purchase one (1) new and unused dual engine combination sewer and catch basin cleaner used for removing all debris commonly found in storm basins and leads and/or sanitary sewer lines and manhole structures using a front mounted operating station. The unit shall consist of a centrifugal compressor vacuum system, a hydraulically driven high pressure water pump, an enclosed sealed body for storage of collected debris and equipped with a self-contained water supply as the source for the water pump system. The unit shall have the capability of operating both vacuum and water system simultaneously at full operating speeds continuously. The centrifugal compressor system shall be powered by the auxiliary engine and have capability to vacuum while in motion. This Project are being funded with monies made available by the federal American Recovery and Reinvestment Act of 2009 (ARRA) and such law contains provisions commonly known as "Buy American" that requires all of the iron, steel, and manufactured goods used in the project be produced in the United States.

Notice to Bidders

Any response not meeting the requirements of the bidding documents shall be considered non-responsive.

Offers made in accordance with the bidding documents must be good and firm for a period of sixty (60) days from the date of bid opening unless otherwise noted.

Bids must be received by Wednesday, June 10, 2009 by 1:00 PM, Alaska Standard Time at the North Pole City Hall. It is the sole responsibility of the bidder to see that his/her bid is submitted on time. Any bid received after the scheduled opening time will not be considered and will be held unopened. No responsibility will be attached to any officer or City employee for the premature opening of or failure to open a bid not properly addressed and identified.

The City of North Pole reserves the right to reject any or all bids, to waive any informalities in the procedures, or to cancel the solicitation if it is in the best interest of the City. The City of North Pole shall have the right to reject any bid from a bidder determined by the City, at its discretion, to be not responsible or not qualified to perform the bid specifications. A determination that a bidder is not responsible may be made solely on the basis of previous failure to perform properly or to complete contracts.

If any Addenda are issued pertaining to the bidding documents and subject Addenda are not acknowledged, the bid will be considered non-responsive.

Telegraphic or electronic bids will not be accepted.

Each bid shall be made on the form provided by the City of North Pole or copy thereof and shall be signed by the bidder with signature in full. Each bid shall be enclosed in an envelope and clearly marked **IFB # 09-Utility Jet-Vac Truck**.

Any bidder may withdraw, modify, or correct his/her bid after it has been deposited with the City of North Pole. Such requests for withdrawal, modifications, or correction must be received by the City of North Pole in writing or by electronic telecommunication before the time set for opening bids. The original bid, as modified by such written or electronic telecommunications will be considered as the bid submitted by the bidder; provided that written confirmation of any telegraphic withdrawal, modification, or correction over the signature of the bidder is placed in the mail and postmarked prior to the time set for the bid opening. The City of North Pole expressly reserves the right to reject any and all bids and to not award the proposed agreement, if it is in the City's best interest.

A copy of the bid specifications showing compliance with the desired components of the specifications shall be submitted with the bid.

A copy of the bidder's current Alaska Business License (as issued by the State Department of Commerce) shall be submitted with the bid.

Price and Delivery Time

All bid prices shall be F.O.B. North Pole, Alaska

Delivery time for the vehicles shall be 90 days from the Notice of Award date.

Bid Submission Requirements

A bidders' package **MUST** include the following **FOUR** items to be complete otherwise it will be considered incomplete and non-responsive.

1. **Bid Form**
2. **Alaska Business License**
3. **Bid Specification Form**
4. **Buy American Certification (Notarized)**

Bid Form

Three Hundred Five Thousand, Seven Hundred Twenty Nine and Sixty Seven C.
Bid Price (in words)

\$305,729.67
Bid Price (numerically)

Yukon Equipment, Inc.
Bidder Name

3511 International St.
Address

Fairbanks, AK 99701
City, State, Zip

Richard G. Buehler
Authorized Signature

Richard G. Buehler
Name/Title (print or type)

(907) 457-1541
Telephone Number

- Attach copy of current Alaska Business License

VACTOR 2100

Plus



VACTOR
Powerful Parts

The Proven Leader. Reenergized.

40
YEARS

For over 40 years, Vector® has been much more than a provider of equipment. We're a provider of solutions – doing whatever it takes to efficiently maintain and clean sewers whenever duty calls. We constantly search for new ways to make the job safer, easier and more efficient from beginning to end. That relentless search led us to develop the Vector 2100 Plus. Whether it's a Fan or Positive Displacement Model, every Vector 2100 Plus is built to your exact needs with quality-tested components and backed by the most experienced dealer network in the industry. Those who know sewer cleaning know who to count on when the rain is falling and the waters are rising. They know the proven, powerful partner, Vector.



VECTOR
Plus 2100

MAKING THE BEST EVEN BETTER.

ALL-NEW, ADVANCED ELECTRONICS

Our exclusive IntelliView™ electronic system with easy-to-read screen makes operation easier and safer thanks to its diagnostic, troubleshooting and safety check capabilities. From displaying the blower temperature to monitoring flow, pressure and system diagnostics, IntelliView saves time and money and helps keep operators safe. In addition, we now include more wireless functions, such as e-stop, hose, reel pay in and out and speed control as optional features.

SMARTER SYSTEMS FOR BETTER PERFORMANCE

As the industry innovator, Vector 2100 Plus features a host of advanced systems that not only offer better performance, but also operate more efficiently. For instance, our exclusive multi-flow system allows you to set flow at a lower rpm, which results in better fuel efficiency without sacrificing performance. In addition, details such as a lighter, more balanced fan design (Fan Model) allow for superior airflow (20% increased vacuum pressure), while a revamped air routing and filtration system make getting the job done faster, safer and more efficient.

QUIETER, SAFER, EASIER TO USE

When you add up all the details – quieter engine and water pump systems, new long-handle tool storage, higher ground clearance to navigate through off-road obstructions, twist-and-lock pipe storage that's positioned lower on the truck and an all-new arm for the controls – it's easy to see how the Vector 2100 Plus offers an overall, better experience for the operator.

EVEN MORE EFFICIENT

With everyone looking to save on fuel costs, we made efficiency a top priority. That's why we've improved many of our systems – from the chassis engine to the fan and blower systems to the auxiliary engine – to provide you with the performance you want and up to 34% better fuel economy than the current 2100 configuration. But the efficiencies don't stop with fuel. You'll use up to 10% less water thanks to the revamped pump controls and nozzle technology.

*When compared to current two-stage fans.

CUSTOMIZED SOLUTIONS

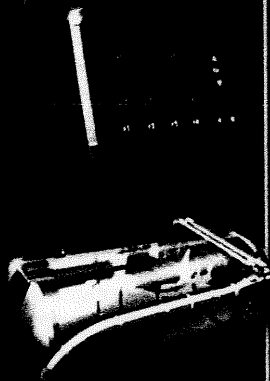
- Vector is one of a handful of companies to offer both PD and Fan platforms.
- Once our team helps you select the platform that is right for you, your Vector will be built to your exact specifications.
- Our exclusive Modul-Flex design process allows us to configure the unit modules to your specific needs, including optional features.

POWERFUL SUPPORT

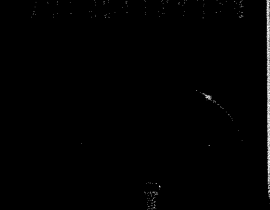
- Available during the entire life of the product, Vector offers a facility dedicated to training you and your team on the usage of your Vector equipment.
- With your new Vector comes an entire team of factory-trained service experts to ensure the very best in maintenance and repair for absolute peace of mind.

UNMATCHED QUALITY

- We introduced the 2100 Series 20 years ago, which continues to set the standard in the industry today.
- Vector products are painted prior to the assembly process, tested to ensure quality and proudly assembled in the U.S.A. using only the finest materials.
- Vector is an ISO 9001 certified company.



VECTOR
Plus 2100



VECTOR 2100
Plus

**SMARTER, TOUGHER AND MORE EFFICIENT.
FROM FRONT TO BACK.**

From big features such as our powerful Jet Rodder Water Pump to small details like hand sanitizer dispensers in the tool boxes, we left no stone unturned when it came to making the Vector 2100 Plus better than ever – and with more standard features than ever before.



A. Gathering all functions into one smart, centrally located system, our all-new IntelliView control provides diagnostics on the machine's readings, prevents operators from changing settings that may compromise safety, helps operators locate machine errors or issues, and offers a troubleshooting tool to quickly diagnose fan or motor operational problems.

B. The hose reel, nozzle storage, tool boxes and controls are all located at the front of the unit for quicker access, increasing productivity and safety. In addition, the pivoting control arm and rotating hose reel create a flexible, expansive work area.

C. Rotating up to 180 degrees, our fully hydraulic boom allows you to place the vacuum hose in hard to reach areas. In addition, the hose reel telescopes forward and backward up to 16 inches to allow for cleaning multiple inlets without moving the truck.

D. Positioned to prevent back strain, our exclusive telescoping hose reel storage offers additional storage area and makes it easy to load and unload additional pipe – with no loose straps to worry about.

D. Depending on your specific needs, Vector offers both centrifugal compressor (Stover) blow and Positive Displacement Models. Performing at greater depths with increased debris volume and velocity, our fan vacuum system (DI) employs a lightweight, perfectly balanced 33-inch (965 mm) diameter aluminum fan for smoother, safer airflow, while its chrome-hardened impeller and 14-inch (355 mm) spun steel housing provide longer life. In addition, the vacuum is powered by a step-up transmission with helical gears for increased fan speed.

E. Allowing you to set water flow at a lower rpm than competitive models, our exclusive multi flow system – now standard on the Vector 2100 Plus – uses less fuel while simultaneously helping you clean more effectively.

F. New ergonomic access to the ultra quiet auxiliary engine allows for easier engine maintenance. (Fan Model only)

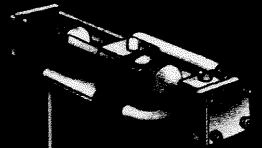
E. New, repositioned water fill makes refilling the water tanks quicker and easier. And even though our exclusive aluminum water tanks are constructed to resist corrosion and cracking for up to 10 years, its modular design allows for fast replacements – getting you back on the job as quickly as possible.

F. Our unique debris body design shields the operator from potential contamination and allows maximum separation of materials in a variety of payload offerings.

G. The rear-mounted float balls and screens protect the operator from debris exposure, while the float cages are easily removed without tools for cleaning and inspection.

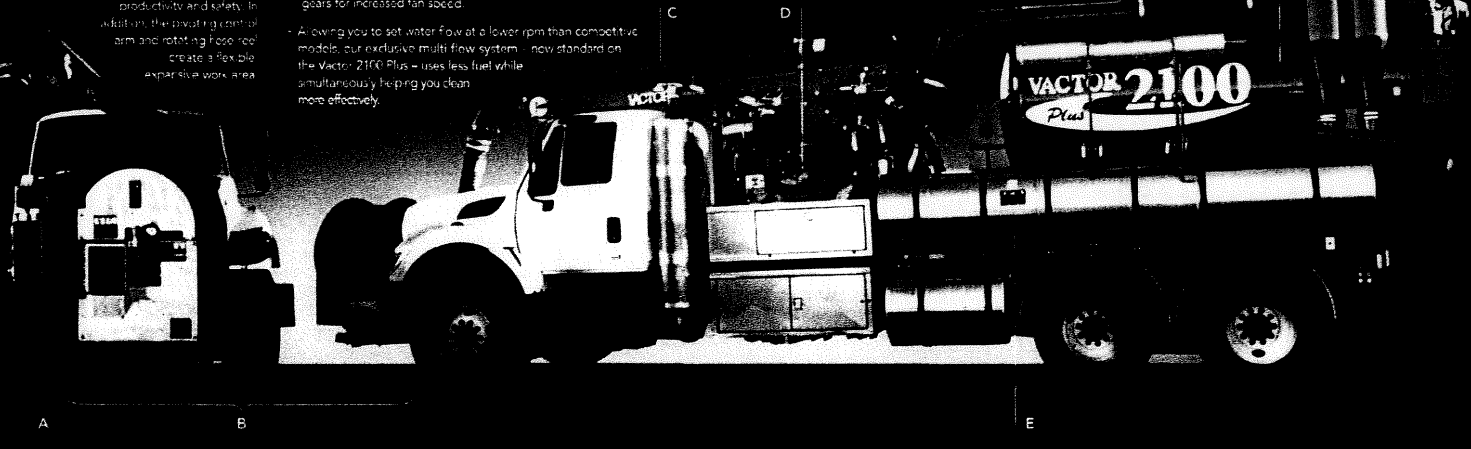
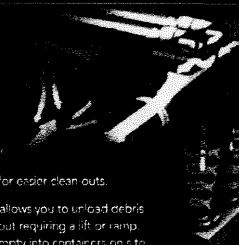
G. To accommodate the increase in air-curtain performance, we've enhanced the centrifugal cyclones, which in turn improve air filtration. Plus their rear location allows for easier clean outs.

H. Our standard 60 inch high dump allows you to unload debris into rolloffs up to 54 feet high without requiring a lift or ramp. This allows your cleanup crew to empty into containers on a site which results in fewer vehicle trips, saving you time and fuel costs.



Dropped specifically to clean sewers, our exclusive Jet Rodder Water Pump utilizes a slow pump stroke to deliver maximum, continuous flow and pressure with minimal wear.

This jackhammer action provides optimal cleaning capability, and since the pump is hydraulic and utilizes a single piston, no belts or other breakdown-prone components are required. However, its side-mounted position allows for easy access.



A

B

C

D

E

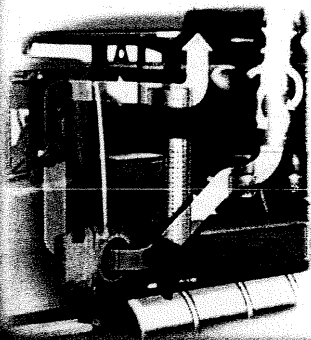
F

G

H

5

VECTOR 2100 PLUS POSITIVE DISPLACEMENT (PD) MODEL



If your job calls for PD technology as opposed to a fan vacuum system, our PD Model offers all of these features and more.

Our PD blower is chassis-driven directly through a 475 hp continuous-duty transfer case. This not only boosts efficiency and reliability, it also eliminates belts, pulleys, clutches, drive-line slip and maintenance. An inlet volume of up to 5,000 cfm and 18 Hg significantly increases the velocity pull at greater working depths.

The hydraulic water pump offers quicker on/off control and delivers full flow and pressure to the hose reel, where it counts.

The most productive of its kind, our multi-stage blower filtration system features dual air ports which maximize material separation in the debris body, stainless steel ball shutoffs to prevent liquid debris carryover, centrifugal cyclones, which remove escaped particles and condensation, and a stainless steel screen strainer which protects the blower from particles as small as 10 microns.

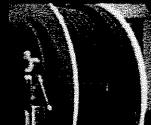
OPTIONAL FEATURES

- Over 100 precision-engineered white iron cast-iron components
- Solid-washer recirculation system
- Liquid debris pump-off system
- Debris flush-out system
- Patented hydraulic mirror-loading system
- Water tank capacity up to 2,000 gal (7,570 l)
- Force-locks system up to 275 gpm
- Flood-relief capacity up to 1,000 ft (305 m)
- Accumulator
- Dual-stage centrifugal compressor
- Dual-ECM controls



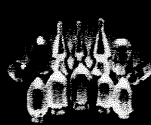
Wireless Bully Pack

- Allows remote operation and access to diagnostics readings
- Provides multiple control functions, including hose reel control, boom control, stop and more
- Easy to use, while increasing safety and efficiency



Armor Belt Series Hoses

- Patented polymer balling, specially engineered for today's extreme conditions
- Exterior cover offers low-friction protection of a standard 4-impulse hose never to eliminate cover peeling, cutting and crushing
- Unique design also reduces hose drag while moving through the pipe
- Integrated locator wire inside of the pipe allows you to track the hose location within the pipe



Vector OEM Nozzles

- A complete line of penetrating, flushing, spinning and cutting nozzles deliver the right type of performance, all at an economic price
- Designed for a wide range of pipe diameters, run lengths and applications
- Crafted from low-carbon, work-hardened steel with a corrosion-resistant coating that is harder than stainless
- Internal tungsten carbide inserts yield a longer nozzle life

VECTOR 2100
Plus

**YOUR PARTNER
IN THE
PLANNING**

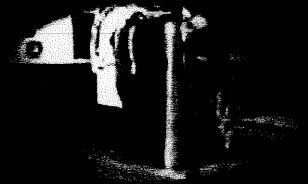
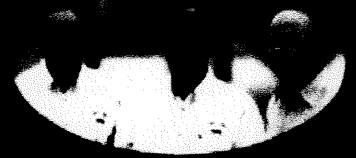
**YOUR PARTNER
IN THE
STREETS**

**YOUR PARTNER
INTO THE
FUTURE**

Instead of one-size-fits-all solutions, we'll work with you to configure your Vector to meet your specific needs.

We're here to help you maintain your Vector and train your operators to ensure the job is done right.

Our dealers don't just sell you a Vector; they're here to answer your questions and get you back on the job as quickly as possible.



VACTOR 2100
Plus

WARRANTY

The Vector 2100 series is warranted against defects in material or workmanship for a period of 12 months from the date of delivery to the original purchase, 5 years on the centrifugal compressor and 10 years on the water tanks. Optional extended warranty packages are available. Consult your Vector dealer for complete warranty information.

VACTOR
Powerful Partner

vector.com

Specifications subject to change without notice.
© 2009 Vector Manufacturing, Inc. All rights reserved.
Vector Manufacturing, Inc. is listed on the NYSE by the symbol FSS.
Vector is a subsidiary of Federal Signal Corporation.

Vector Manufacturing, Inc. • 1621 South Illinois Street • Streator, IL 61364 U.S.A.

(815) 672-3171 Phone • (815) 672-2779 Fax