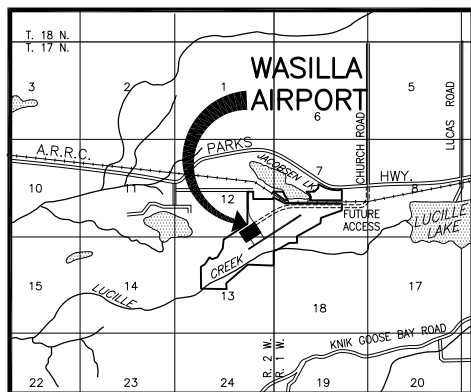
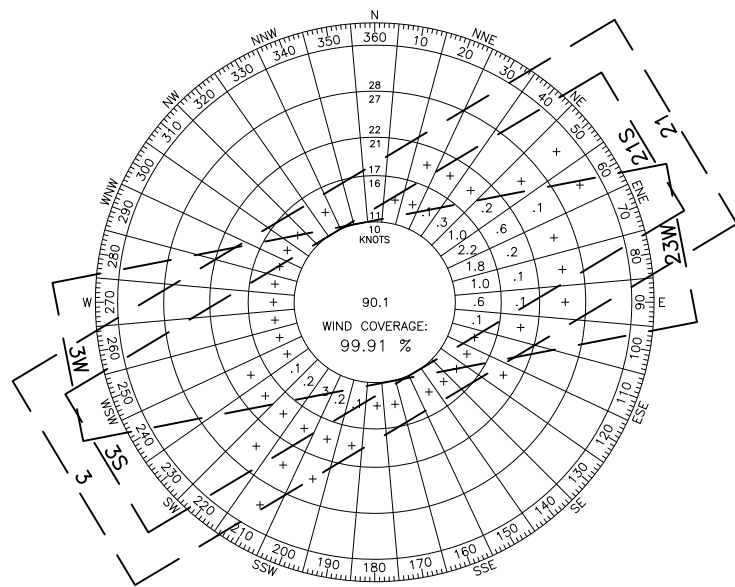
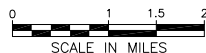


LOCATION MAP
NO SCALE



VICINITY MAP
SCALE: 1"=1 MILE

SEC. 7 & 18 T17N, R1W
SEC. 12 & 13 T17N, R2W
SEWARD MERIDIAN, ALASKA
ANCHORAGE (C-7)



WIND DATA TABLE

RUNWAY	10.5 kt	13 kt
3/21	99.86%	99.91%
3S/21S	99.86%	---
5W/23W	99.73%	---

SOURCE: WASILLA AWOS (PAWS)

PERIOD: 1/1/1999 THROUGH 12/31/2000

WATERLANE 3W/21W DATA TABLE

ITEM	EXISTING	ULTIMATE
RUNWAY TYPE (UTILITY OR OTHER THAN UTILITY)	NONE	UTILITY
FAR PART 77 APPROACH CATEGORY (V, NPI, P)		V
APPROACH SURFACES		20:1 / 20:1
VISIBILITY MINIMUM		> 1 MILE
RUNWAY SURFACE		WATER
PAVEMENT STRENGTH (SW,DW,DTW,DDTW x1000lbs)		N/A
AIRCRAFT APPROACH CATEGORY		A
AIRPLANE DESIGN GROUP		II
TRUE BEARING		N 55°49'41" E
EFFECTIVE GRADE		0.00%
TOUCHDOWN ELEVATION (NAVD88)		296.0'
RUNWAY DIMENSIONS		200'x4500'
RUNWAY SAFETY AREA (RSA) DIMENSIONS		N/A
LENGTH BEYOND R/W END		N/A
RUNWAY PROTECTION ZONE (RPZ) DIMENSIONS		N/A
RUNWAY OBJECT FREE AREA (OFA) DIMENSIONS		N/A
LENGTH BEYOND R/W END OR STOPWAY		N/A
RUNWAY OBSTACLE FREE ZONE (OFZ) DIMENSIONS		N/A
RUNWAY LIGHTING		NONE
RUNWAY MARKING TYPE		BUOY
RUNWAY VISUAL APPROACH AIDS		NONE

GEOGRAPHIC COORDINATES TABLE (NAD 83)*

ITEM	EXISTING LATITUDE	EXISTING LONGITUDE	ULTIMATE LATITUDE	ULTIMATE LONGITUDE
ARP	61°34'17.98"N	149°32'25.06"W	TBD	TBD
THRESHOLD R/W 3	61°34'07.85"N	149°32'56.83"W	TBD	TBD
THRESHOLD R/W 21	61°34'28.10"N	149°31'53.30"W	TBD	TBD
THRESHOLD R/W 3S	TBD	TBD	TBD	TBD
THRESHOLD R/W 21S	TBD	TBD	TBD	TBD
WATERLANE 5	TBD	TBD	TBD	TBD
WATERLANE 23	TBD	TBD	TBD	TBD

*TBD=TO BE DETERMINED WHEN THE AERONAUTICAL SURVEY IS COMPLETED, WHICH IS CURRENTLY IN PROGRESS.

LEGEND

ITEM	EXISTING	ULTIMATE
AIRPORT PROPERTY LINE	---	---
TREELINE	~	SAME
INDEX CONTOURS (AS NOTED)	~	SAME
AIRPORT REFERENCE POINT	▲	▲
SECURITY FENCING	-x-x-	NONE
AIRFIELD PAVEMENT	▨	▨
GRAVEL RUNWAY	NONE	▨
AIRPORT ROTATING BEACON	☼	☼
AWOS	⊙	⊙
BUILDINGS	■	■
ROADWAYS	==	==
RAILROAD	++++	++++
OVERHEAD ELECTRIC W/UTILITY POLE	⊕	⊕
RUNWAY MARKING SIGN	⊙	⊙
AIRPORT SIGN	⊕	⊕
FLOOD LIGHT	⊕	⊕
REIL	NONE	○
PAPI	⊕	SAME
WIND CONE & SEGMENTED CIRCLE	⊕	SAME
BUILDING RESTRICTION LINE (B.R.L.)	---	SAME
RUNWAY PROTECTION ZONE (RPZ)	---	SAME
RUNWAY OBSTACLE FREE ZONE (OFZ)	---	SAME
RUNWAY OBJECT FREE AREA (OFA)	---	SAME
RUNWAY SAFETY AREA (RSA)	---	SAME
TAXIWAY OBJECT FREE AREA (TOFA)	---	SAME
TAXIWAY SAFETY AREA (TSA)	---	SAME

NOTES

- CONTOURS WITHIN THE AIRPORT BOUNDARY ARE 4-FOOT INTERVALS MAPPED BY AEROMAP U.S. IN 2001. COORDINATES VALUES ARE ALASKA STATE PLANE, ZONE 4 BASED ON NORTH AMERICAN DATUM OF 1983 (NAD83), AND VERTICAL DATUM IS NORTH AMERICAN VERTICAL DATUM OF 1988 (NAVD88).
- CONTOURS OUTSIDE THE AIRPORT BOUNDARY ARE 5-FOOT INTERVALS AND ARE BASED ON 1986 MATANUSKA SUSITNA BOROUGH MAPPING ON NORTH AMERICAN DATUM OF 1927 ADJUSTED TO THE 2001 AIRPORT MAPPING USING A JACOBSEN LAKE WATER LEVEL ELEVATION OF 342 FEET. CONTOUR ELEVATIONS ARE APPROXIMATE.
- RUNWAY THRESHOLD COORDINATES (NAD83) AND ELEVATIONS (NAVD88/MSL) ARE BASED ON A LOCAL GPS SURVEY BY LCMF IN OCTOBER 1997 FOR THE FAA.
- AN AERONAUTICAL SURVEY IS CURRENTLY IN PROGRESS AND IS SCHEDULED TO BE COMPLETED IN 2011.
- BRL IS BASED ON A BUILDING HEIGHT OF 32'.
- NO THRESHOLD SITING SURFACE PENETRATIONS.
- BASED ON CURRENT MAGNETIC DECLINATION, RUNWAYS 3/21 AND 3S/21S SHOULD BE REDESIGNATED AS 4/22 AND 4S/22S, RESPECTIVELY.

AIRPORT DATA TABLE

ITEM	EXISTING	ULTIMATE
ICAO IDENTIFIER	PAWS	PAWS
NATIONAL AIRPORT IDENTIFIER	IYS	IYS
FAA SITE NUMBER	50870.3*A	50870.3*A
AIRPORT ELEVATION (NAVD88)	353.6'	353.6'
AIRPORT REFERENCE CODE	B-II	B-II
MEAN MAX. TEMPERATURE, HOTTEST MONTH (SOURCE: BETHEL)	69° F, JULY	69° F, JULY
AIRPORT AND TERMINAL NAVIGATION AIDS	NONE	NONE
TAXIWAY LIGHTING AND MARKING	MITL	MITL
OBSTRUCTION SURVEY SOURCE & TYPE		
MAGNETIC DECLINATION, YEAR, RATE OF CHANGE	19°01'E, 2010, -0°12' (W)/YEAR	19°01'E, 2010, -0°12' (W)/YEAR

RUNWAY 3/21 DATA TABLE

ITEM	EXISTING	ULTIMATE
RUNWAY TYPE (UTILITY OR OTHER THAN UTILITY)	UTILITY	OTHER THAN UTILITY
FAR PART 77 APPROACH CATEGORY (V, NPI, P)	NPI / NPI	PI / NPI
APPROACH SURFACES	34:1 / 20:1	50:1 / 34:1
VISIBILITY MINIMUM	> 1 MILE	> 3/4 MILE
RUNWAY SURFACE	ASPHALT	ASPHALT
PAVEMENT STRENGTH (SW,DW,DTW,DDTW x1000lbs)	S50/T80	S50/T80
AIRCRAFT APPROACH CATEGORY	B	B
AIRPLANE DESIGN GROUP	II	II
TRUE BEARING	N 55°48'24" E	N 55°48'24" E
EFFECTIVE GRADE	0.48%	0.48%
TOUCHDOWN ELEVATION (NAVD88)	TBD	TBD
RUNWAY DIMENSIONS	75'x3700'	75'x5100'
RUNWAY SAFETY AREA (RSA) DIMENSIONS	150'x4300'	150'x5700'
LENGTH BEYOND R/W END	300' / 300'	300' / 300'
RUNWAY PROTECTION ZONE (RPZ) DIMENSIONS	500'x700'x1000'	1000'x1510'x1700'
RUNWAY OBJECT FREE AREA (OFA) DIMENSIONS	500'x4300'	500'x5700'
LENGTH BEYOND R/W END OR STOPWAY	300' / 300'	300' / 300'
RUNWAY OBSTACLE FREE ZONE (OFZ) DIMENSIONS	250'x4100'	250'x5500'
RUNWAY LIGHTING	MIRL	MIRL
RUNWAY MARKING TYPE	NPI	P
RUNWAY VISUAL APPROACH AIDS	R/W 3-21: PAPI	R/W 4: PAPI, LOC, GS, LPV, GPS R/W 22: PAPI, GPS

RUNWAY 3S-21S DATA TABLE

ITEM	EXISTING	ULTIMATE
RUNWAY TYPE (UTILITY OR OTHER THAN UTILITY)	UTILITY	SAME
FAR PART 77 APPROACH CATEGORY (V, NPI, P)	V / V	SAME
APPROACH SURFACES	20:1 / 20:1	SAME
VISIBILITY MINIMUM	VISUAL	SAME
RUNWAY SURFACE	GRAVEL	SAME
PAVEMENT STRENGTH (SW,DW,DTW,DDTW x1000lbs)	N/A	SAME
AIRCRAFT APPROACH CATEGORY	A	SAME
AIRPLANE DESIGN GROUP	I	SAME
TRUE BEARING	N 55°48'24" E	SAME
EFFECTIVE GRADE	0.36%	SAME
TOUCHDOWN ELEVATION (NAVD88)	TBD	SAME
RUNWAY DIMENSIONS	60'x1690'	SAME
RUNWAY SAFETY AREA (RSA) DIMENSIONS	120'x2170'	SAME
LENGTH BEYOND R/W END	240' / 240'	SAME
RUNWAY PROTECTION ZONE (RPZ) DIMENSIONS	250'x450'x1000'	SAME
RUNWAY OBJECT FREE AREA (OFA) DIMENSIONS	250'x2170'	SAME
LENGTH BEYOND R/W END OR STOPWAY	240' / 240'	SAME
RUNWAY OBSTACLE FREE ZONE (OFZ) DIMENSIONS	250'x1890'	SAME
RUNWAY LIGHTING	NONE	SAME
RUNWAY MARKING TYPE	NONE	SAME
RUNWAY VISUAL APPROACH AIDS	NONE	SAME

NON STANDARD CONDITIONS TABLE

ITEM	STANDARD	EXISTING	ULTIMATE

DRAWING INDEX

SHT #	TITLE
1	WIND ROSE, DATA TABLES, LOCATION MAP, & VICINITY MAP
2	EXISTING AIRPORT LAYOUT PLAN
3	ULTIMATE AIRPORT LAYOUT PLAN
4	PART 77 AIRSPACE PLAN
5	ULTIMATE INNER PORTION OF THE APPROACH SURFACE-R/W 3-21
6	ULTIMATE INNER PORTION OF THE APPROACH SURFACE-WATERLANE
7	AIRPORT PROPERTY MAP

BY DATE REVISION

AIRPORT LAYOUT PLAN CONDITIONAL APPROVAL SUBJECT TO ALP APPROVAL LETTER DATED ___/___/___
FAA AIRSPACE REVIEW NUMBER: 2007-AAL-142-NRA

DATE: _____
FAA, AIRPORTS DIVISION ALASKAN REGION, AAL-600

WASILLA AIRPORT
WASILLA, ALASKA
WIND ROSE, DATA TABLES,
LOCATION MAP, &
VICINITY MAP

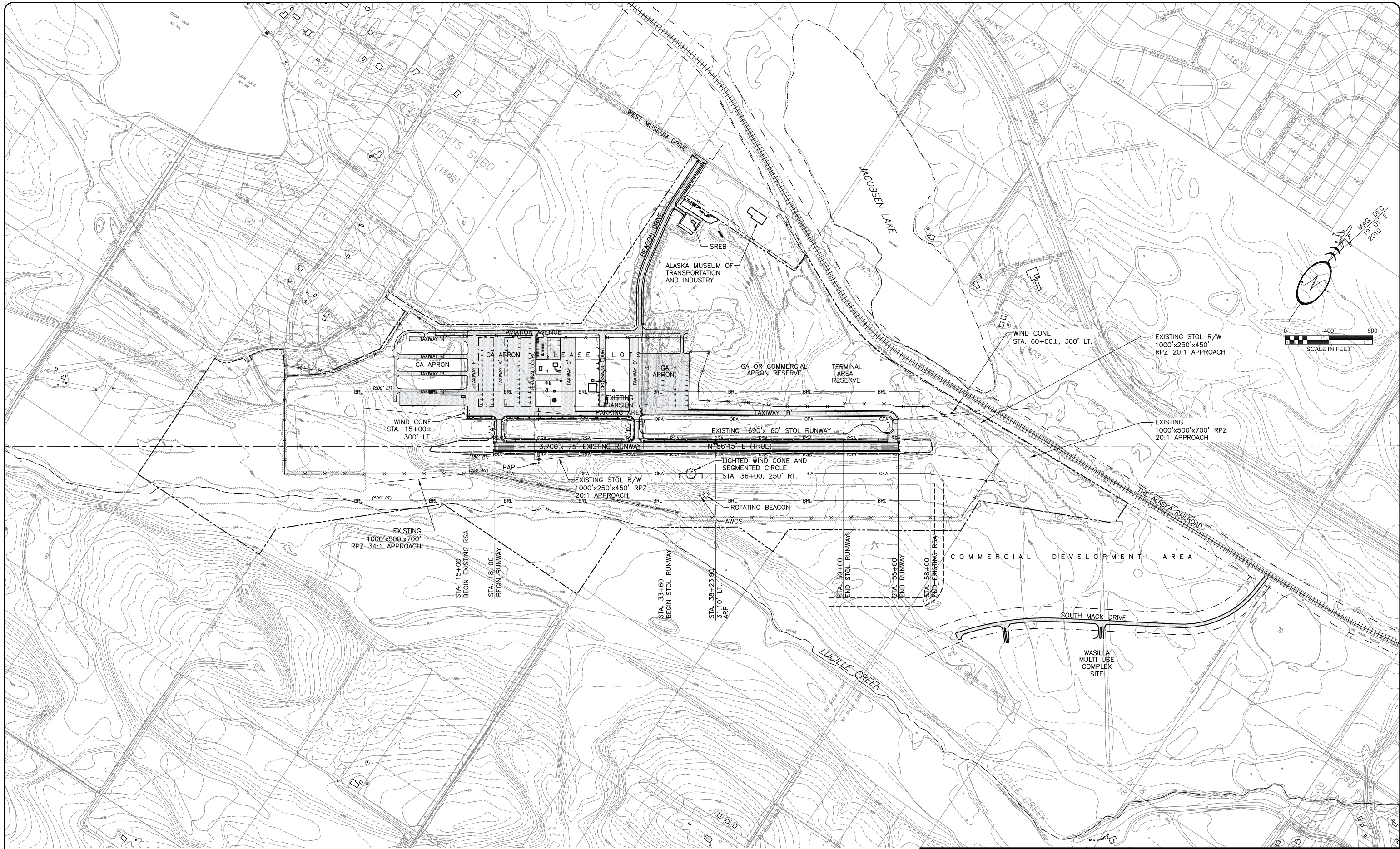
DATE: AUG. 2011
SHEET: 1 OF 7

DRAFT

Date Plotted: 10/17/07
Layout Name: ALP01
File Name: _____
Designed By: J. LUMB
Drawn By: S. GARDEN
Checked By: Z. SPARKLIN

This page intentionally left blank.

Date Plotted: 10/17/07
 Drawn By: S. JARDEN
 Checked By: E. GRIFFITH
 File Name: ALP02



DRAFT

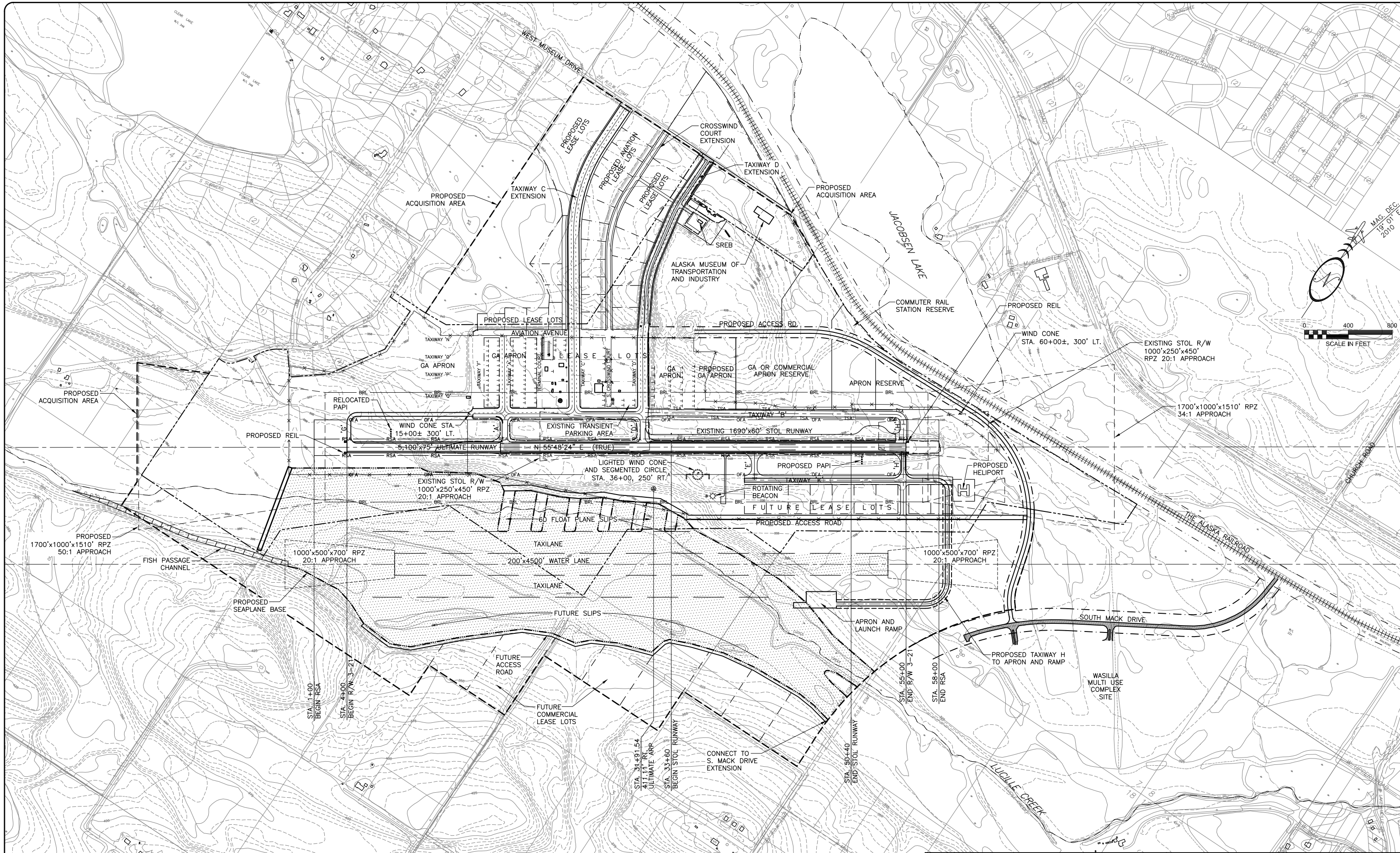
BY	DATE	REVISION

WASILLA AIRPORT
 WASILLA, ALASKA
 AIRPORT LAYOUT PLAN
 EXISTING AIRPORT LAYOUT PLAN

DATE: AUG. 2011
 SHEET: 2 OF 7

This page intentionally left blank.

Date Plotted: 10/17/07
 Layout Name: ALP02
 Designed By: J. LUMB
 Drawn By: S. GARDEN
 Checked By: E. GRIFFITH



DRAFT

BY	DATE	REVISION

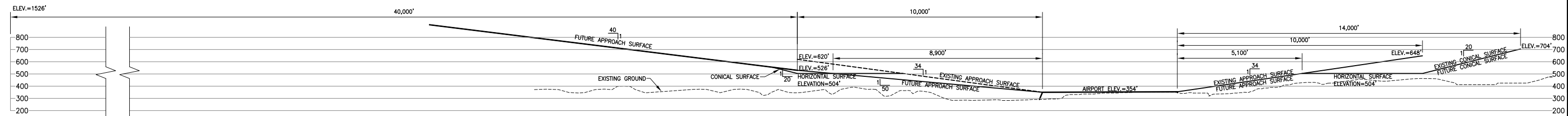
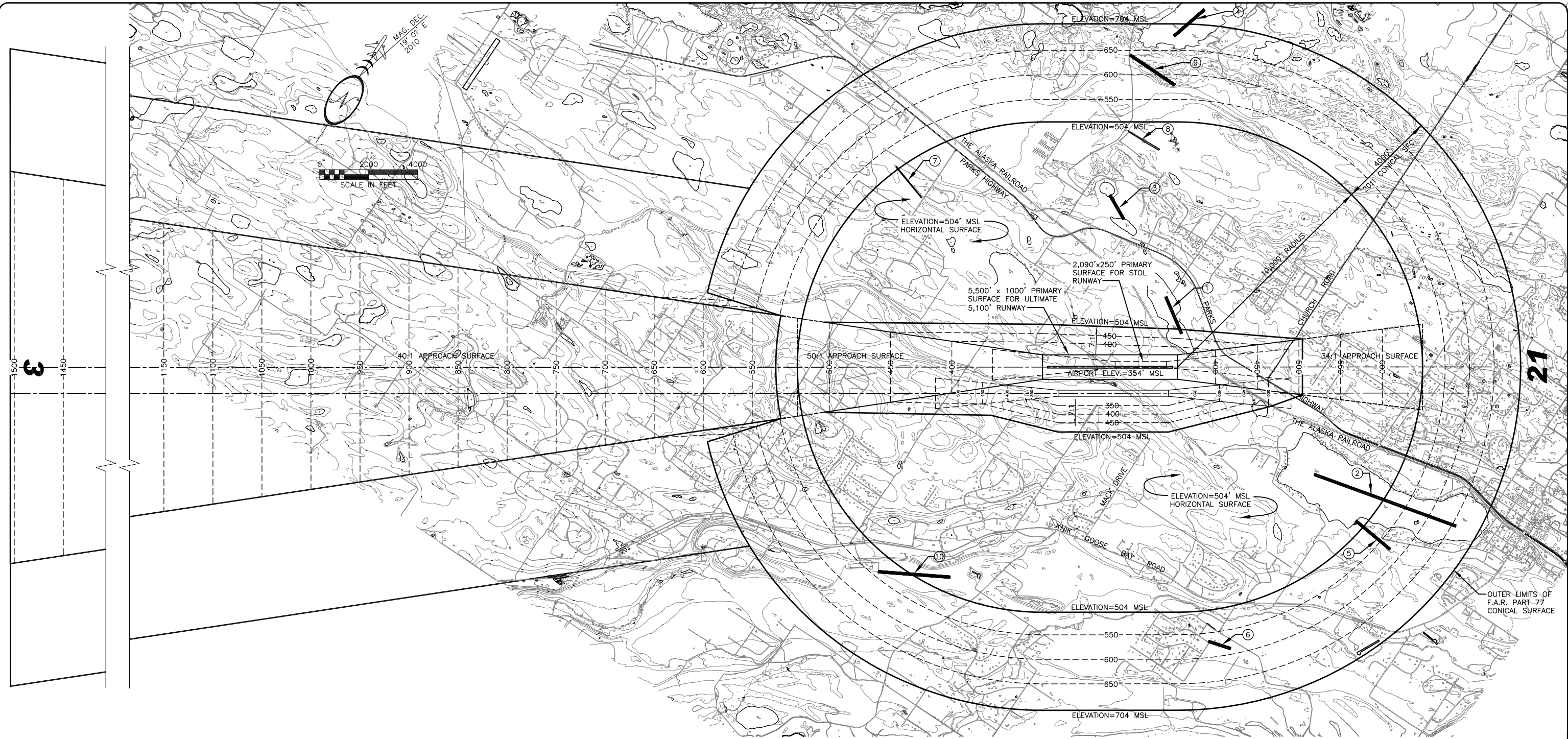
WASILLA AIRPORT
 WASILLA, ALASKA
 AIRPORT LAYOUT PLAN
 ULTIMATE AIRPORT LAYOUT PLAN

DATE:
 AUG. 2011
 SHEET:
3
 OF
 7

This page intentionally left blank.

Date Plotted: 10/17/07
 Layout Name: ALP02
 File Name:

Designed By: J. LMB
 Drawn By: C. TARDEN
 Checked By: E. GRIFFITH



NEARBY AIRPORTS (FOR INFORMATIONAL PURPOSES ONLY)

- ① JACOBSEN LAKE (PRIVATE)
- ② LAKE LUCILLE (PUBLIC)
- ③ SHAWN FIELD (PRIVATE)
- ④ KALMBACK LAKE (PUBLIC)
- ⑤ WICKER (PRIVATE)
- ⑥ UNNAMED GRAVEL AIRSTRIP (PRIVATE)
- ⑦ BECHTOL FIELD (PRIVATE)
- ⑧ JOLLY FIELD (PRIVATE)
- ⑨ KALMBACK (PRIVATE)
- ⑩ FAIRVIEW WEST (PRIVATE)

PART 77 SURFACE OBSTRUCTIONS TABLE

ID #	DESCRIPTION	STATION/OFFSET	ELEVATION	SURFACE PENETRATED	SURFACE ELEVATION	AMOUNT PENETRATION	DISPOSITION	STAGE TO CORRECT
*								

*OBSTRUCTION EVALUATION WILL BE COMPLETED WHEN THE AERONAUTICAL SURVEY IS COMPLETE. IT IS CURRENTLY IN PROGRESS WITH COMPLETION SCHEDULED IN 2011.

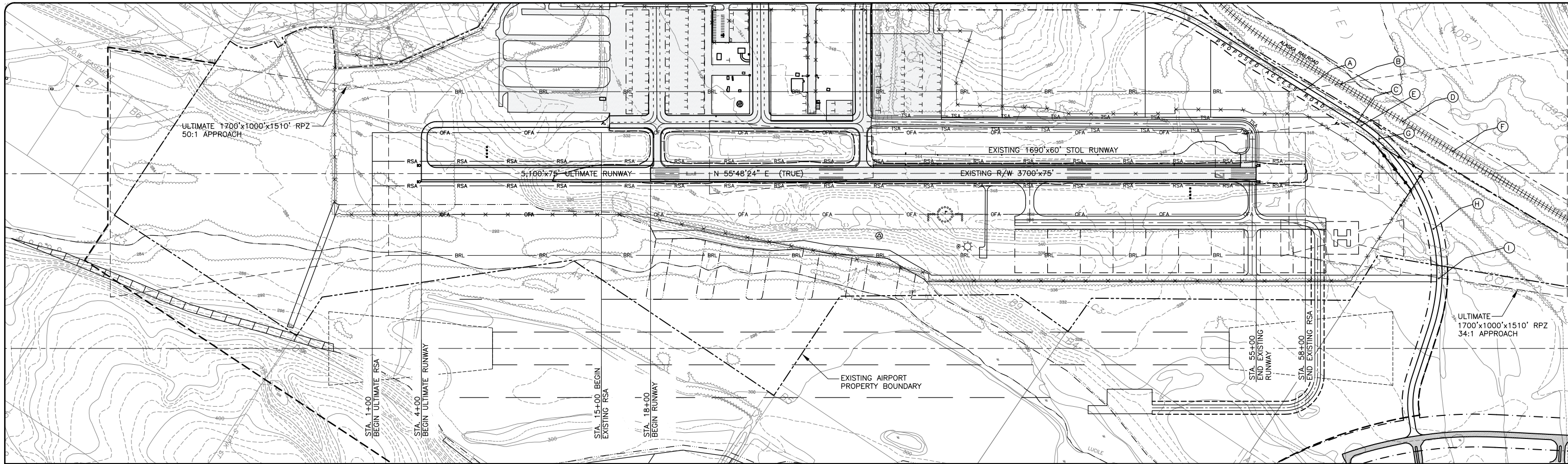
DRAFT

BY	DATE	REVISION

WASILLA AIRPORT
 WASILLA, ALASKA
 AIRPORT LAYOUT PLAN
 PART 77 AIRSPACE PLAN

DATE: AUG. 2011
 SHEET: 4 OF 7

This page intentionally left blank.



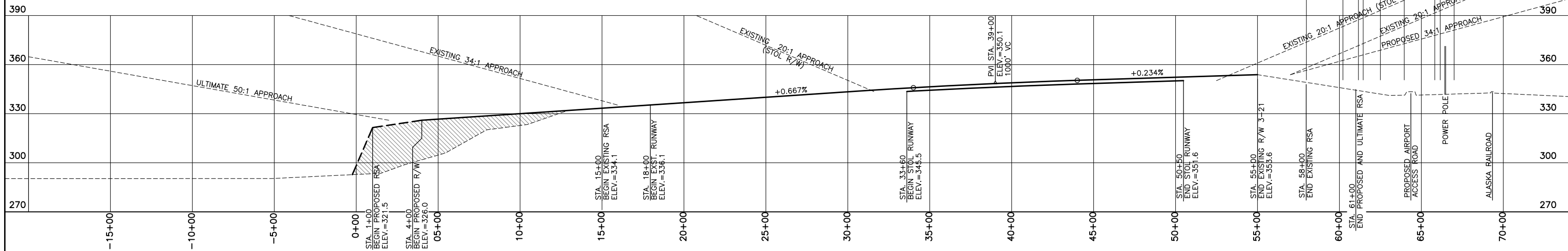
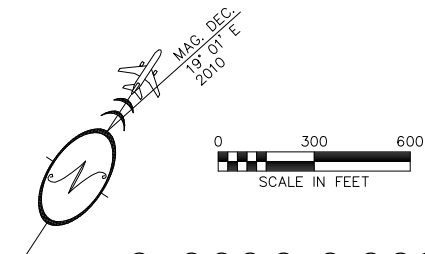
APPROACH SLOPE CLEARANCE TABLE*

	PRIMARY SURFACE ELEVATION	APPROACH SLOPE	DISTANCE FROM PRIMARY SURFACE	PART 77 ELEVATION AT PT	GRADE ELEVATION	OBJECT HEIGHT	TOP OF OBJECT ELEVATION	PART 77 CLEARANCE
(A) ROAD								
(B) RAILROAD								
(C) ROAD								
(D) RAILROAD								
(E) ROAD								

APPROACH SLOPE CLEARANCE TABLE (CONTINUED)

	PRIMARY SURFACE ELEVATION	APPROACH SLOPE	DISTANCE FROM PRIMARY SURFACE	PART 77 ELEVATION AT PT	GRADE ELEVATION	OBJECT HEIGHT	TOP OF OBJECT ELEVATION	PART 77 CLEARANCE
(F) RAILROAD								
(G) ROAD								
(H) ROAD								
(I) ROAD								

*NOTE: APPROACH SLOPE CLEARANCE TABLE WILL BE COMPLETED WHEN THE AERONAUTICAL SURVEY, WHICH IS CURRENTLY IN PROGRESS, IS COMPLETE.



RUNWAY 3-21 PLAN AND PROFILE

SCALE: HOR. 1"=300'
VER. 1"=30'

DRAFT

BY	DATE	REVISION

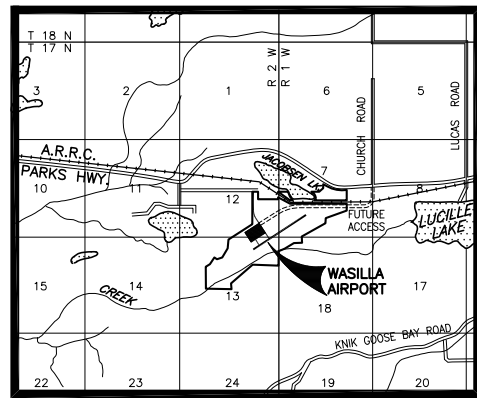
WASILLA AIRPORT
WASILLA, ALASKA
AIRPORT LAYOUT PLAN
ULTIMATE INNER PORTION OF THE
APPROACH SURFACE

DATE: AUG. 2011
SHEET: 5 OF 7

Date Plotted: 10/17/07
Designed By: J. LUMB
Drawn By: C. TARDEN
Layout Name: ALP02
Checked By: E. GRIFFITH

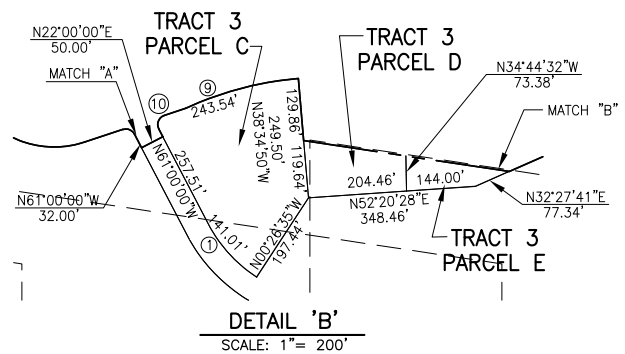
This page intentionally left blank.

This page intentionally left blank.

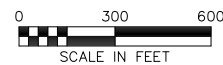


VICINITY MAP

SCALE: 1"=1 MILE
 SEC. 7 & 18 T17N, R1W
 SEC. 12 & 13 T17N, R2W
 SEWARD MERIDIAN, ALASKA
 ANCHORAGE (C-7)

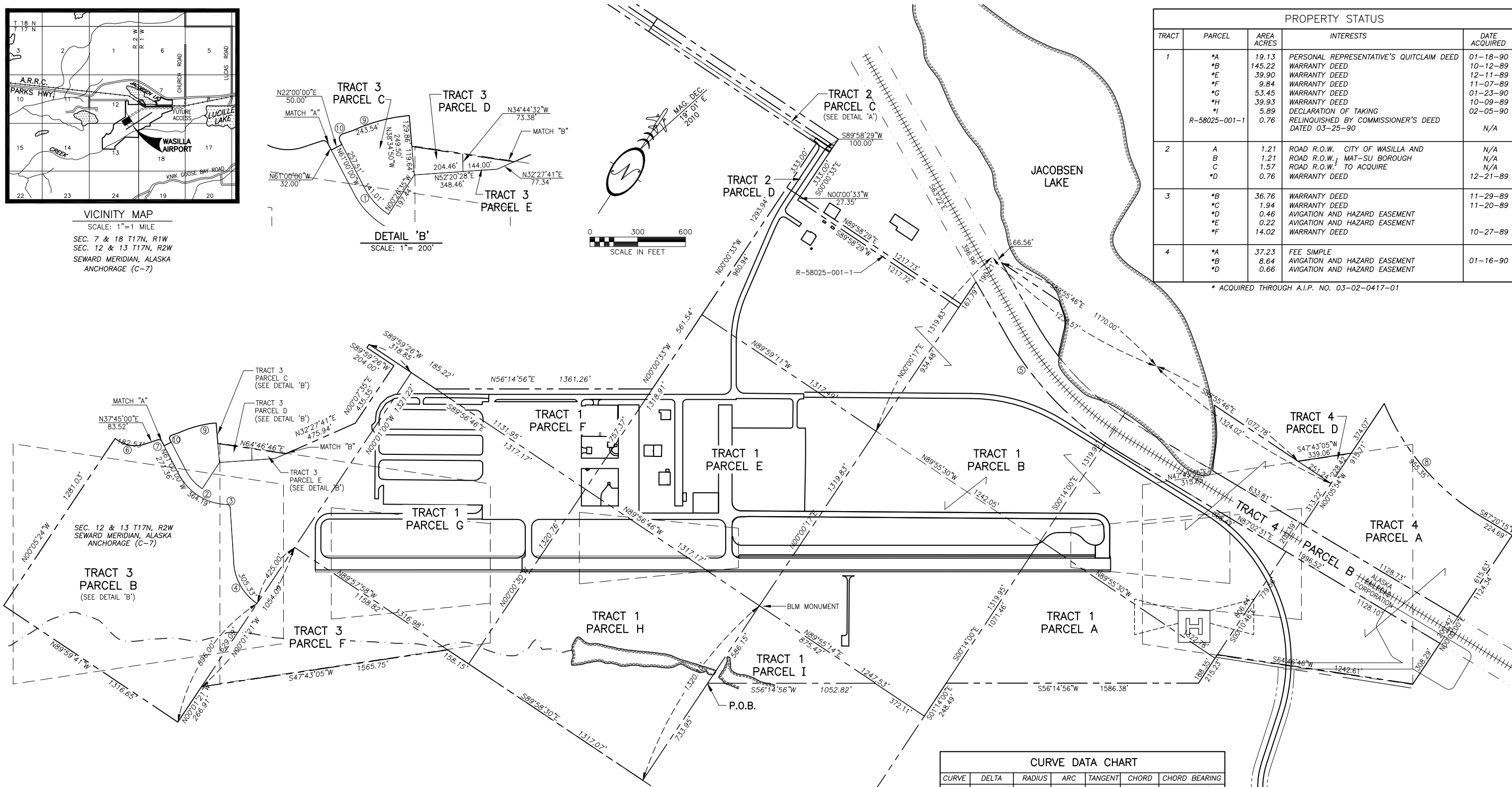


DETAIL 'B'
 SCALE: 1"= 200'

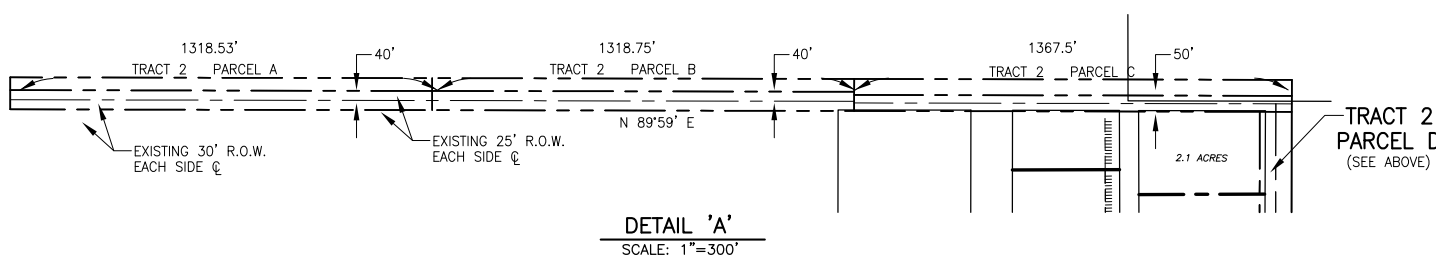


PROPERTY STATUS				
TRACT	PARCEL	AREA ACRES	INTERESTS	DATE ACQUIRED
1	*A	19.13	PERSONAL REPRESENTATIVE'S QUITCLAIM DEED	01-18-90
	*B	145.22	WARRANTY DEED	10-12-89
	*E	39.90	WARRANTY DEED	12-11-89
	*F	9.84	WARRANTY DEED	11-07-89
	*G	53.45	WARRANTY DEED	01-23-90
	*H	39.93	WARRANTY DEED	10-09-89
	*I	5.89	DECLARATION OF TAKING RELINQUISHED BY COMMISSIONER'S DEED DATED 03-25-90	02-05-90
	R-58025-001-1	0.76		N/A
2	A	1.21	ROAD R.O.W. CITY OF WASILLA AND ROAD R.O.W. MAT-SU BOROUGH ROAD R.O.W. TO ACQUIRE	N/A
	B	1.21		N/A
	C	1.57		N/A
	*D	0.76	WARRANTY DEED	12-21-89
3	*B	36.76	WARRANTY DEED	11-29-89
	*C	1.94	WARRANTY DEED	11-20-89
	*D	0.46	AVIGATION AND HAZARD EASEMENT	
	*E	0.22	AVIGATION AND HAZARD EASEMENT	
	*F	14.02	WARRANTY DEED	10-27-89
4	*A	37.23	FEE SIMPLE	
	*B	8.64	AVIGATION AND HAZARD EASEMENT	
	*D	0.66	AVIGATION AND HAZARD EASEMENT	01-16-90

* ACQUIRED THROUGH A.I.P. NO. 03-02-0417-01



CURVE DATA CHART						
CURVE	DELTA	RADIUS	ARC	TANGENT	CHORD	CHORD BEARING
1	26°51'01"	300.91	141.01	71.83	139.73	N74°25'31"W
2	59°27'53"	350.91	364.19	200.42	348.07	N89°16'03"E
3	83°01'53"	20.00	28.98	17.70	26.51	N78°56'57"W
4	52°34'30"	332.75	305.33	164.36	294.73	N63°43'15"W
5	29°35'45"	2009.86	1038.18	530.95	1026.68	S69°08'04"E
6	52°13'37"	200.24	182.53	98.15	176.27	N63°51'48"E
7	81°15'00"	20.00	28.36	17.16	26.04	N78°22'30"E
8	36°28'56"	1500.39	955.35	494.50	939.29	N74°23'23"W
9	19°55'12"	700.50	243.54	123.01	242.23	S47°46'06"W
10	98°45'00"	20.00	34.47	23.31	30.36	N11°37'30"W



DETAIL 'A'
 SCALE: 1"=300'

Date Plotted: 10/17/07
 Designed By: J. LMB
 Drawn By: S. BARBER
 Layout Name: ALP02
 Checked By: E. GRIFFITH
 File Name:

DRAFT

BY	DATE	REVISION

WASILLA AIRPORT
 WASILLA, ALASKA
 AIRPORT LAYOUT PLAN
 AIRPORT PROPERTY MAP

DATE:
 AUG. 2011
 SHEET:
 7 OF 7

This page intentionally left blank.