

WASILLA, ALASKA

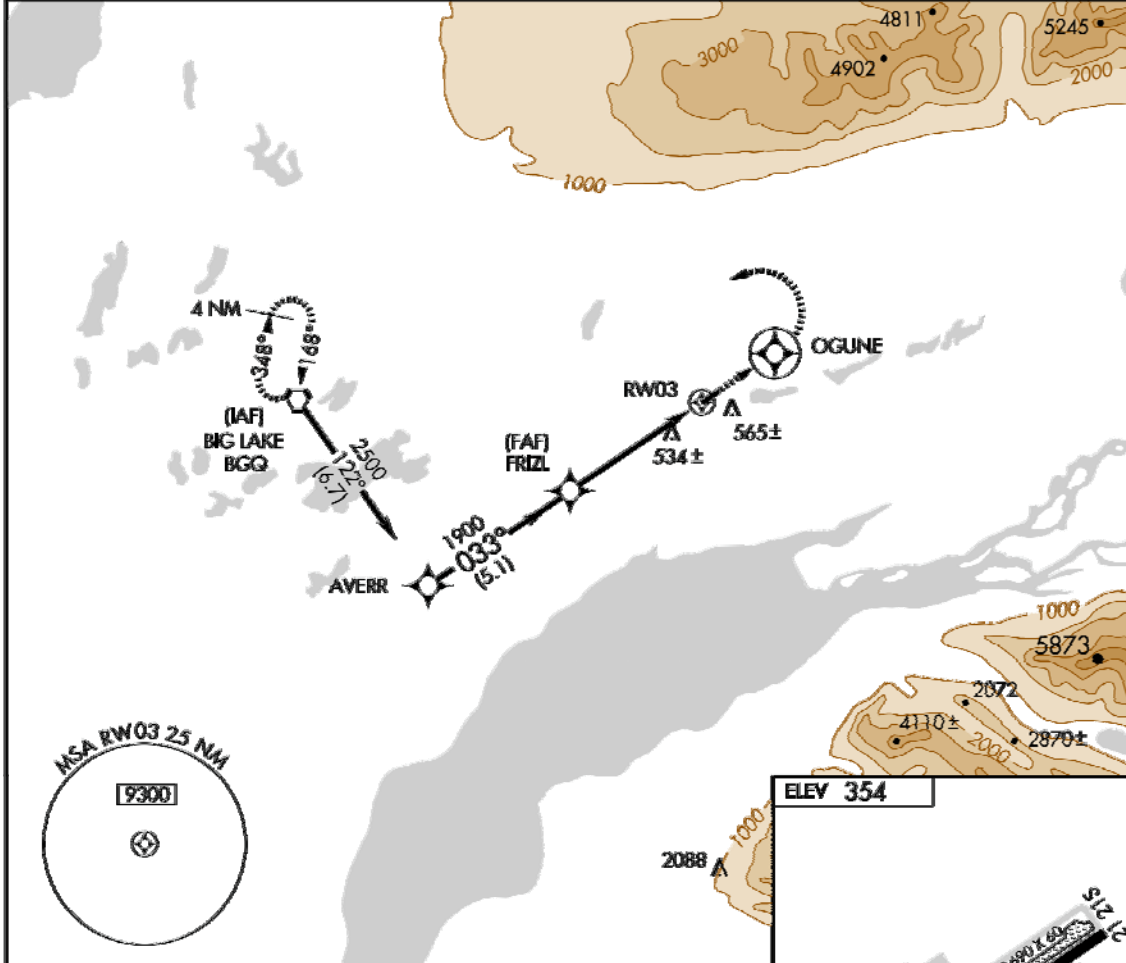
AL-9296 (FAA)

RNAV (GPS) RWY 3
WASILLA (IYS) (PAWS)

APP CRS 033°	Rwy Idg 3700
	TDZE 352
	Apt Elev 354

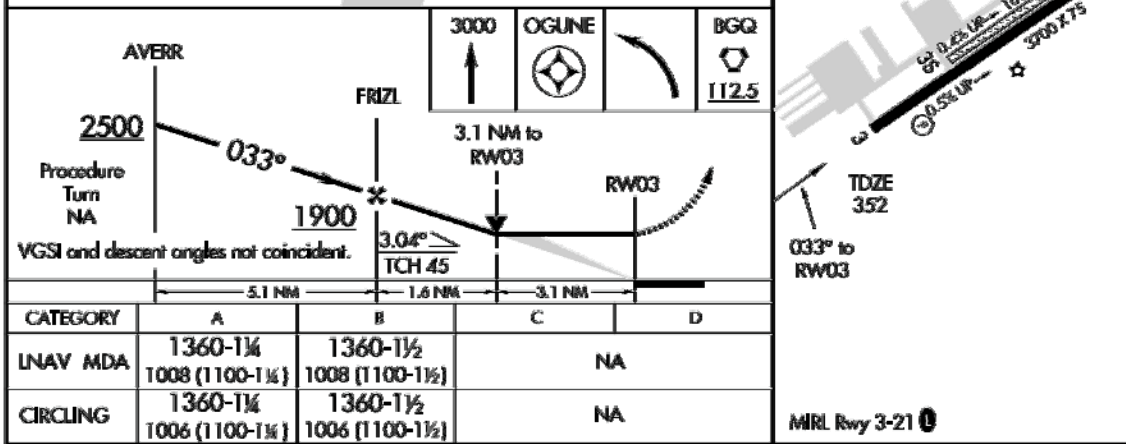
▼ DME/DME RNP-0.3 NA. **▲** MISSED APPROACH: Climb to 3000 direct OGUNE and climbing left turn direct BGG VORTAC and hold.

AWOS-3 135.25	APP CON 119.1 363.2	CTAF 122.8
-------------------------	-------------------------------	----------------------



AK, 17 DEC 2009 to 11 FEB 2010

AK, 17 DEC 2009 to 11 FEB 2010



WASILLA, ALASKA
Orig 09351

61° 34' N-149° 32' W

WASILLA (IYS) (PAWS)
RNAV (GPS) RWY 3

WASILLA AIRPORT MASTER PLAN
APPROACH PROCEDURE

USKH

DATE
OCT. 2010

FIGURE
3