

WAAS CH 53636 W04A	APP CRS 038°	Rwy Idg TDZE Apt Elev	3700 352 354
--	------------------------	-----------------------------	---

RNAV (GPS) RWY 4

WASILLA (IYS) (PAWS)

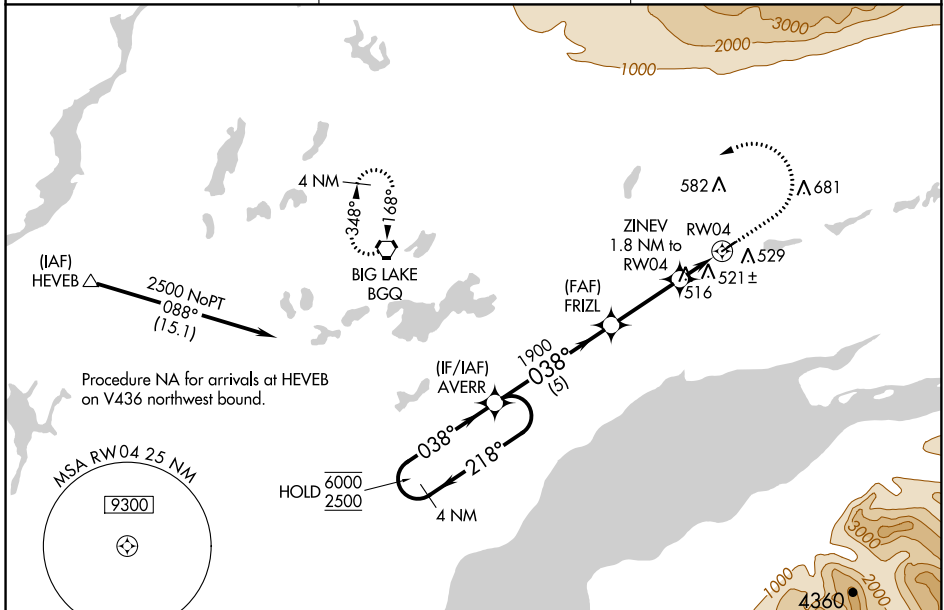
RNP APCH.

⚠ Circling NA to Rwy 4S and 22S. Baro-VNAV and VDP NA when using Palmer altimeter setting. For uncompensated Baro-VNAV systems, LNAV/VNAV NA below -20°C or above 54°C. When local altimeter setting not received, use Palmer altimeter setting and increase all DA 46 feet, all MDA 60 feet and all visibilities ¼ mile.

⚠ MISSED APPROACH: Climb to 1000 then climbing left turn to 3000 direct BQG VORTAC and hold.

❄ -31°C

AWOS-3P 135.25	ANCHORAGE APP CON 119.1 363.2	CTAF 122.8 0
--------------------------	---	------------------------



AK, 05 DEC 2019 to 30 JAN 2020

AK, 05 DEC 2019 to 30 JAN 2020

ELEV 354		TDZE 352	
4 NM Holding Pattern			
VGSI and RNAV glidepath not coincident (VGSI Angle 3.00/TCH 25).			
6000 ← 218°		3000 BQG	
2500 → 038°		*LNAV only.	
GP 3.00°		*960	
TCH 45		1.3 NM to RWY 4	
5 NM		1.3 NM	
3 NM		0.5 NM	
AVERR	FRIZL	ZINEV	RWY 4
1900		3700 X 75	
1900		0.4% UP - 1690 X 80	
1900		0.5% UP	
1900		0.38° to RWY 4	
CATEGORY	A	B	C
LPV DA	602-3/4	250 (300-3/4)	NA
LNAV/VNAV DA	828-1 5/8	476 (500-1 1/8)	NA
LNAV MDA	780-1	428 (500-1)	NA
C CIRCLING	1000-1	646 (700-1)	NA

MIRL Rwy 4-22 0
REIL Rwy 4 and 22 0