

WAAS CH 69536 W22A	APP CRS 218°	Rwy ldg TDZE Apt Elev	3700 354 354
--	------------------------	-----------------------------	---

RNAV (GPS) RWY 22

WASILLA (IYS) (PAWS)

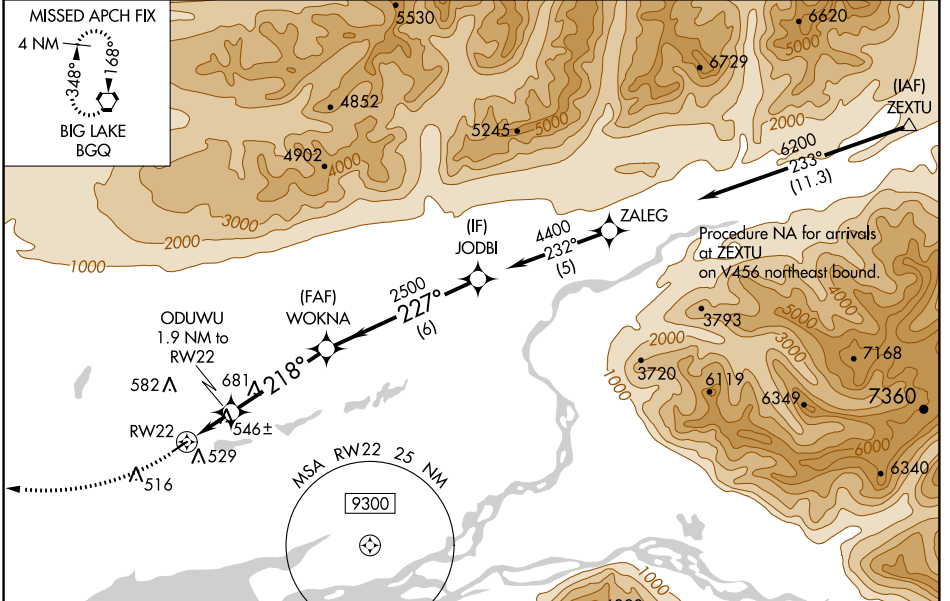
RNP APCH.

⚠ Circling NA to Rwy 4S and 22S. Baro-VNAV and VDP NA when using Palmer altimeter setting. Rwy 22 helicopter visibility reduction below $\frac{3}{4}$ SM NA. For uncompensated Baro-VNAV systems, LNAV/VNAV NA below -25°C or above 54°C. When local altimeter setting not received, use Palmer altimeter setting and increase all DA 46 feet, MDA 60 feet and all visibilities $\frac{1}{8}$ mile.

⚠ -31°C

MISSED APPROACH: Climb to 1000 then climbing right turn to 3000 direct BGQ VORTAC and hold.

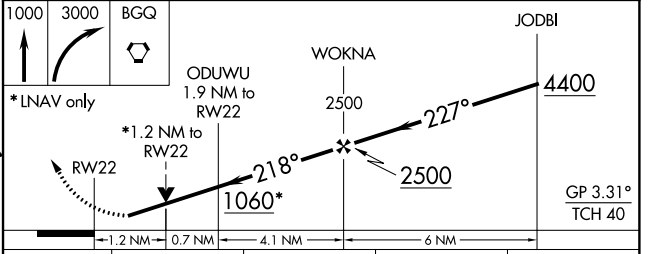
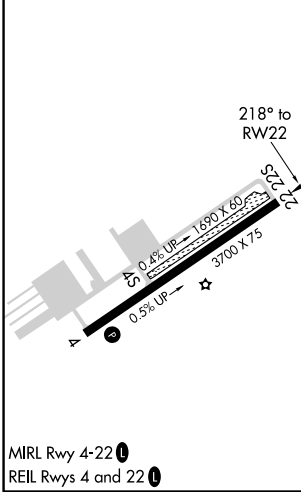
AWOS-3P 135.25	ANCHORAGE APP CON 119.1 363.2	CTAF 122.8 0
--------------------------	---	------------------------



AK, 05 DEC 2019 to 30 JAN 2020

AK, 05 DEC 2019 to 30 JAN 2020

ELEV 354	TDZE 354
----------	----------



CATEGORY	A	B	C	D
LPV DA	604- $\frac{3}{4}$	250 (300- $\frac{3}{4}$)		NA
LNAV/VNAV DA	821-1 $\frac{1}{2}$	467 (500-1 $\frac{1}{2}$)		NA
LNAV MDA	800-1	446 (500-1)		NA
C CIRCLING	1000-1	646 (700-1)		NA