

By: Public Works Department
Adopted: February 24, 2020
Yes: Burney, Dryden, Graham, Harvey, Ledford, Velock
No: None
Absent: None

**City of Wasilla
Resolution Serial No. 20-07**

A Resolution Of The Wasilla City Council Authorizing The Mayor To Execute A Lease Agreement With AT&T In The Amount Of \$1,350 A Month To Co-Locate Communication Equipment At The Matcom Dispatch Center.

WHEREAS, AT&T submitted a letter of intent to the Matcom Dispatch Center to lease space for a proposed AT&T wireless facility; and

WHEREAS, the AT&T wireless facility is proposed to be located at the Matcom Center on the tower with an antenna array that includes a ground support building in a small fenced-in area; and

WHEREAS, the Matcom Dispatch Center has determined the proposed AT&T wireless facility can be co-located with the City's communication equipment without interference.

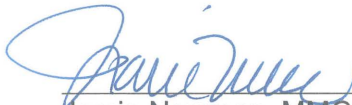
NOW, THEREFORE, BE IT RESOLVED, that the Wasilla City Council authorizes the Mayor to execute a lease agreement with AT&T in the amount of \$1,350 a month to co-locate communication equipment at the Matcom Dispatch Center.

Effective Date. This resolution takes effect upon adoption.

ADOPTED by the Wasilla City Council on February 24, 2020.


Bert L. Cottle, Mayor

ATTEST:


Jamie Newman, MMC, City Clerk



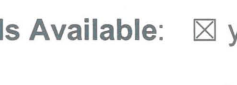
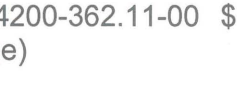
[SEAL]

**City of Wasilla
Legislative Staff Report
Resolution Serial No. 20-07**

Authorizing The Mayor To Execute A Lease Agreement With AT&T In The Amount Of \$1,350 A Month To Co-Locate Communication Equipment At The Mat-Com Dispatch Center.

Originator: Archie Giddings, Public Works Director
Date: 2/11/2020

Agenda of: 2/24/2020

Route to:	Department Head	Signature	Date
X	Chief of Police		2/12/20
X	Public Works Director		2/12/20
X	Finance Director		2-12-20
X	Deputy Administrator		2/12/2020
X	City Clerk		2/13/2020
X	Mayor		2/15/2020

Fiscal Impact: yes or no

Funds Available: yes or no

Account name/number: Rents & Royalties/001-4200-362.11-00 \$16,200 annual revenue

Attachments: Resolution Serial No. 20-07 (1 page)
AT&T Letter of Intent (4 pages)

Summary Statement: This resolution authorizes the Mayor to execute a lease agreement with AT&T in the amount of \$1,350 a month to co-locate communication equipment at the Mat-Com Dispatch Center. This equipment includes an antenna array on the communication tower and a ground support building with a backup generator in a small fenced-in area next to the tower. The Mat-Com Dispatch Center has determined that the proposed AT&T wireless facility can be co-located with the City's communication equipment without interference. Revenue from this lease is proposed to be used for Mat-Com operations.

Proposed Action: Adopt the Resolution.



Via: Electronic Version

November 5, 2019

City of Wasilla
290 E. Herning Ave.
Wasilla, AK 99654
Attention: Joel Butcher

Dear Mr. Butcher,

AT&T submits Letter of Intent for lease space for proposed wireless facility to be located at 1800 E Parks Hwy, Wasilla, AK 99654. Proposed communications facility will utilize existing City of Wasilla Police and 911 lattice tower and adjacent ground space of ground equipment.

LETTER OF INTENT TERMS AND CONDITIONS ARE AS FOLLOWS:

LEASE AGREEMENT: Term of 5 Years with 5/5 Year Options to renew. Lease Template enclosed.

MONTHLY RENT: \$1,350.00 per month for First Term of 5 Years.

RENT ESCALATION: 10% Rent Escalation each Renewal Term (Every 5 Years).

CONSTRUCTION: All costs associated with installation of the wireless facility shall be borne by AT&T.

UTILITIES: AT&T will contract with Matanuska Electric Association for separate power and provide its own separate telephone service.

ACCESS: AT&T requires 24 hour, seven days a week, year-round access in case of emergency outage.

Please review this Letter of Intent, Lease Template and Architect Drawings and Passing Structural Analysis. Please contact Patrick Hinman with any questions about this Proposal.

Sincerely,

Patrick Hinman

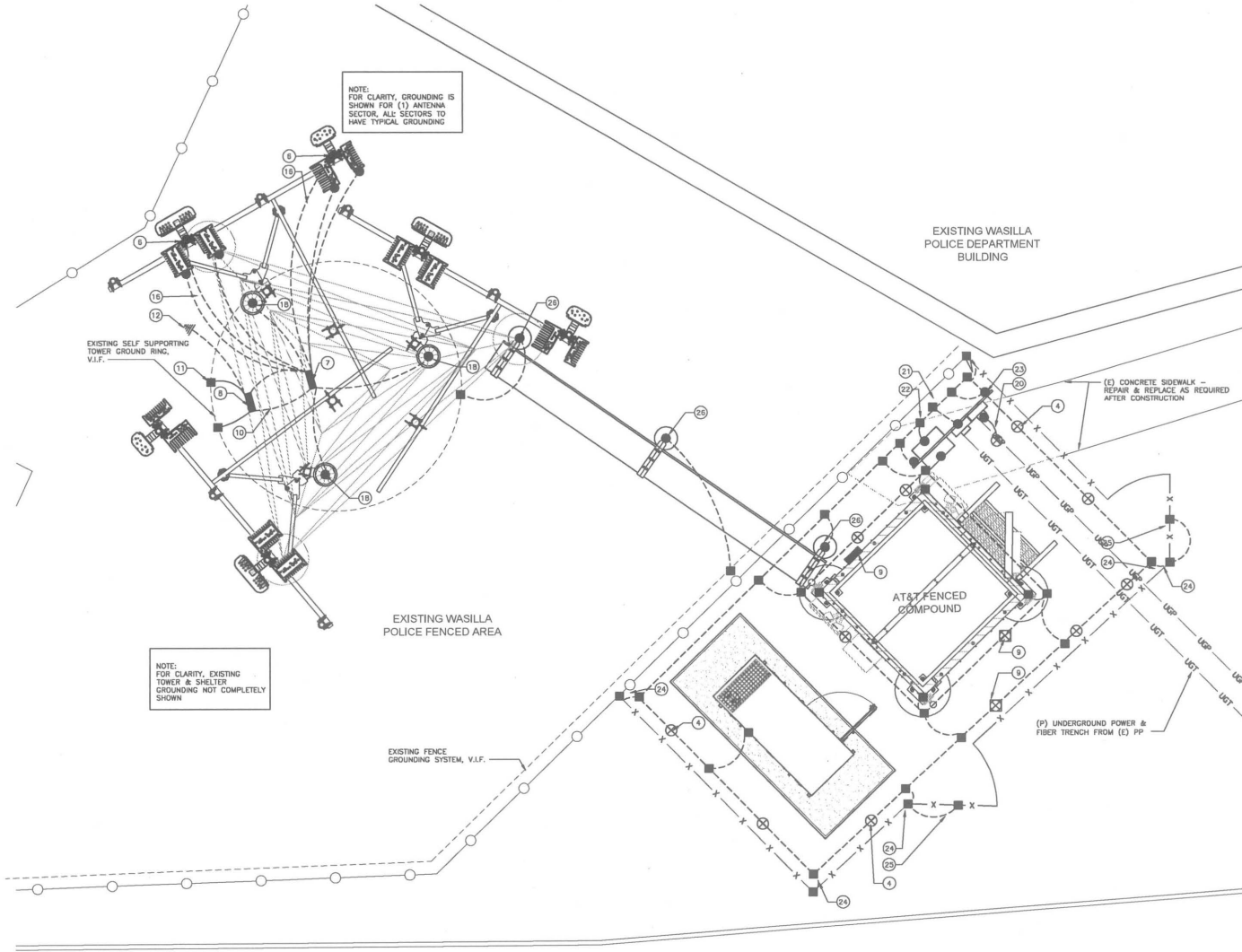
Patrick Hinman
Select Site Acquisition, LLC
An authorized representative of AT&T
Phone: (425) 306-2733
Email: patrick.hinman@selectsiteacq.com



CC: Jacob Butcher, MatCom Manager
CC: Gene Belden, Chief of Police
CC: Archie Giddings, Public Works Director
CC: Mayor Cottle's office, Lisa Bartgis.

Enclosures:

Tower Structure Form Lease
Project Drawings
Structural Analysis of the Tower



SCHEMATIC GROUNDING PLAN

N.T.S.

GROUNDING KEYED NOTES:

- 1 #2 AWG EXTERNAL GROUND RING.
- 2 #2 AWG SHELTER GROUND RING.
- 3 #2 AWG TOWER GROUND RING.
- 4 GROUND ROD @ 10'-0" O.C. MIN. (TYP)
- 5 TEST WELL. SEE DETAIL.
- 6 CAD WELD (TYP). SEE DETAIL.
- 7 ANTENNA GROUND BUS BAR AT ANTENNA LEVEL OF TOWER WITH COAX GROUND KIT. SEE DETAIL.
- 8 TOWER GROUND BUS BAR AT BASE OF TOWER WITH COAX GROUND KIT. SEE DETAILS AND MANUFACTURER FOR COAX GROUNDING.
- 9 SHELTER GROUND BUS BAR AT SHELTER COAX ENTRY PORT WITH COAX GROUND KIT. SEE DETAIL AND MANUFACTURER FOR COAX GROUNDING.
- 10 #2 AWG GROUND FROM ANTENNA GROUND BUS BAR TO TOWER GROUND BUS BAR (TYP OF (2) PLACES). SEE DETAILS.
- 11 #2 AWG GROUND FROM TOWER GROUND BUS BAR TO TOWER GROUND RING (TYP OF (2) PLACES). SEE DETAILS.
- 12 #2 AWG GROUND FROM SHELTER GROUND BUS BAR TO TOWER GROUND RING (TYP OF (2) PLACES). SEE DETAILS.
- 13 #6 AWG GROUND FROM SHELTER GROUND RING TO TOWER GROUND RING (TYP OF (2) PLACES). SEE DETAIL.
- 14 #2 AWG GROUND FROM SHELTER/TOWER GROUND RING TO COMPOUND GROUND RING (TYP OF (2) PLACES EACH RING). SEE DETAIL.
- 15 #2 AWG GROUND FROM TOWER GROUND RING TO TOWER BASE (TYP OF (3) PLACES). SEE DETAILS.
- 16 #6 AWG ANTENNA MOUNT GROUND TO ANTENNA GROUND BUS BAR (TYP OF (2) PLACES). SEE DETAIL.
- 17 #6 AWG SURGE SUPPRESSION UNIT GROUND TO ANTENNA GROUND BUS BAR (TYP OF (2) PLACES). SEE DETAIL.
- 18 #2 AWG GROUND FROM RRU/RRH'S TO PLATFORM OR SHELTER GROUND BAR (TYP) SEE DETAIL.
- 19 #2 AWG FROM GPS ANTENNA TO SHELTER GROUND RING. SEE DETAIL.
- 20 #2 AWG GROUND FROM POWER METER TO ISOLATED GROUND ROD SEE DETAIL.
- 21 #6 AWG GROUND FROM TELCO BOX TO EXTERNAL GROUND RING. SEE DETAIL.
- 22 #6 AWG GROUND FROM ELECTRICAL DISCONNECT TO EXTERNAL GROUND RING.
- 23 #2 AWG FROM SUPPORT BACK TO EXTERNAL GROUND RING (TYP OF (2) PLACES). SEE DETAIL.
- 24 #6 AWG GROUND FROM VERTICAL FENCE POST TO EXTERNAL GROUND RING (TYP).
- 25 #4 AWG WELDING CABLE OR FLEXIBLE CABLE, GATE JUMPER.
- 26 #2 AWG FROM EACH ICE BRIDGE POST TO EXTERNAL GROUND RING.

GROUNDING NOTES & LEGEND

- GENERAL GROUNDING NOTES
1. ALL DETAILS ARE SHOWN IN GENERAL TERMS. ACTUAL INSTALLATION AND CONSTRUCTION MAY VARY DUE TO SITE SPECIFIC CONDITIONS.
 2. GROUND ALL ANTENNA BASES, FRAMES, CABLE RUNS, AND OTHER METALLIC COMPONENTS USING GROUND WIRES AND CONNECT TO SURFACE MOUNTED BUS BARS. FOLLOW ANTENNA AND ITS MANUFACTURERS PRACTICES FOR GROUNDING REQUIREMENTS. GROUND COAX SHIELD AT BOTH ENDS AND EXIT FROM TOWER OR POLE USING MFR'S PRACTICES.
 3. ALL GROUND CONNECTIONS SHALL BE CADWELDED. ALL WIRES SHALL BE COPPER THIN/THIN. ALL GROUND WIRE SHALL BE GREEN INSULATED WIRE ADEQUATE GROUNDING.
 4. CONTRACTOR TO VERIFY AND TEST GROUND TO SOURCE. GROUNDING AND OTHER OPERATIONAL TESTING WILL BE WITNESSED BY AT&T WIRELESS, LLC REPRESENTATIVE.
 5. REFER TO DIVISION 16 GENERAL ELECTRIC. GENERAL ELECTRICAL PROVISION AND COMPLY WITH ALL REQUIREMENTS OF GROUNDING STANDARDS.
 6. ELECTRICAL CONTRACTOR TO PROVIDE DETAILED DESIGN OF GROUNDING SYSTEM, AND RECEIVE APPROVAL OF DESIGN BY AUTHORIZED AT&T MOBILITY REPRESENTATIVE PRIOR TO INSTALLATION OF GROUNDING SYSTEM. PHOTO DOCUMENT ALL CADWELDS AND GROUND RING.
 7. NOTIFY CONSTRUCTION MANAGER IF THERE ARE ANY DIFFICULTIES INSTALLING GROUNDING SYSTEM DUE TO SITE SOIL CONDITIONS.
- GROUNDING ROD NOTES
- [WHERE APPLICABLE]
- ELECTRICAL CONTRACTOR SHALL ORDER GROUND RESISTANCE TESTING ONCE THE GROUND SYSTEM HAS BEEN INSTALLED. A QUALIFIED INDIVIDUAL, UTILIZING THE FALL OF POTENTIAL METHOD, SHOULD PERFORM THE TEST. THE REPORT WILL SHOW THE LOCATION OF THE TEST AND CONTAIN NO LESS THAN 9 TEST POINTS ALONG THE TESTING LINE, GRAPHED OUT TO SHOW THE PLATEAU.
- 2 POINT GROUND TEST OR 3 POINT 62% TESTS WILL NOT BE ACCEPTED AS ALTERNATIVES TO THE ABOVE MENTIONED GROUND TESTS. TEST SHALL BE PERFORMED WHILE THE COUNTERPOISE IS ISOLATED FROM THE A/C SYSTEM GRIDS AND EXISTING COMMUNICATIONS FACILITY.

SYMBOL	DESCRIPTION	SYMBOL	DESCRIPTION
○	COPPER GROUND ROD	⊗	TEST WELL
⊗	CADWELD CONNECTION	⊠	GROUND BAR
■	SIDE SPLICE CADWELD	— —	GROUND BAR
↔	FIELD VERIFY & TIE INTO EXISTING GROUNDING SYSTEM		



Select Site Acquisition, LLC
1000 E. 4300 LANE
LIBERTY LAKE, WA 99019

DHD ARCHITECTURE PLLC
18300 W. 10TH AVE
DENVER, CO 80202
TEL: 303.733.0000
WWW.DHDARCHITECTURE.COM

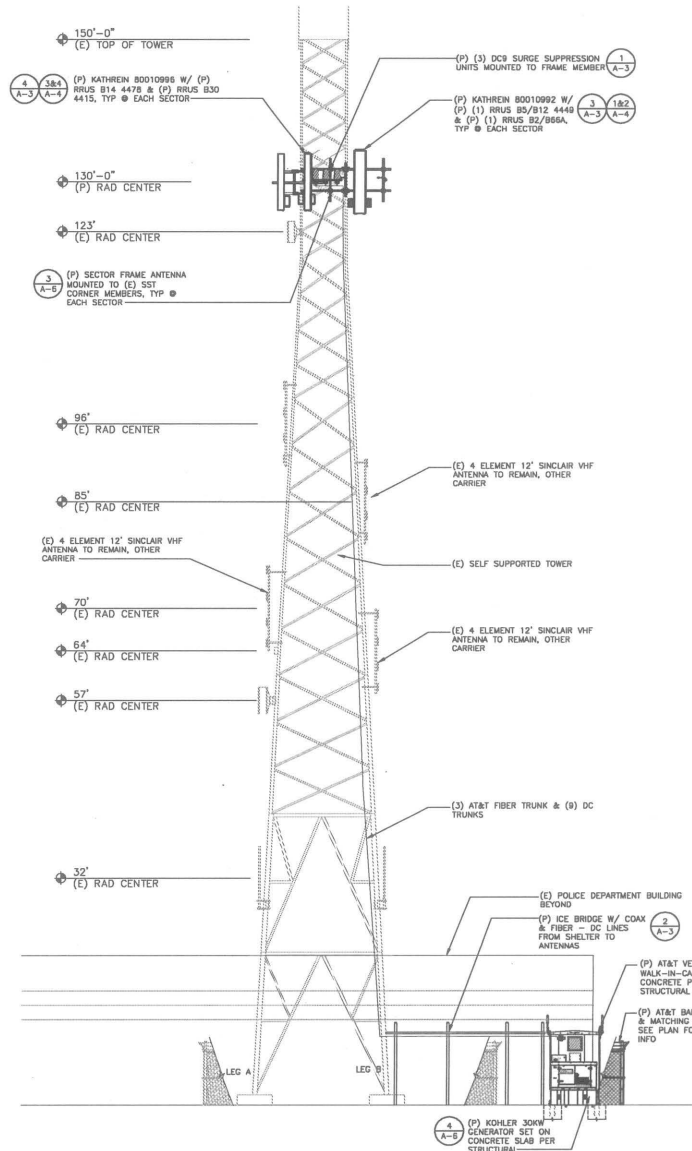
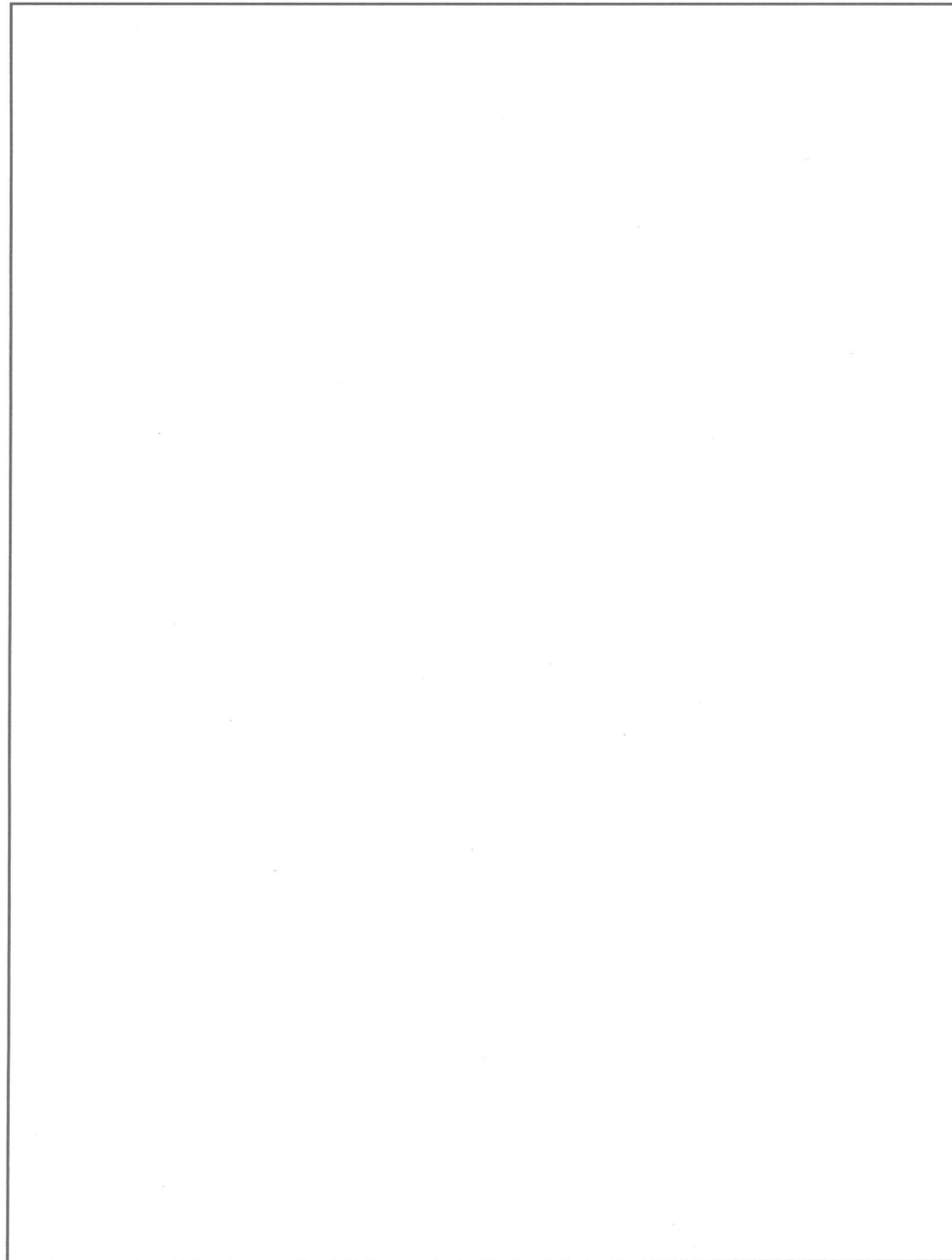
AN2353
CREEK SIDE NSB
1800 EAST PARKS HIGHWAY
WASILLA, AK 99654

ISSUED DATE: 11-05-19

NO.	DATE	BY	REVISION
1	11-05-19	NSB	ISSUE BOOK
2			
3			
4			
5			
6			
7			
8			
9			
10			

SHEET TITLE:
SCHEMATIC GROUNDING

SHEET NUMBER:
E-1



EXTERIOR ELEVATION 1/8" = 1'-0"



MasTec Network Solutions

Select Site Acquisition, LLC
 1800 E. ALKALIST
 LIBERTY LAKE, WA 99019

DHD ARCHITECTURE PLLC
 1800 E. ALKALIST
 LIBERTY LAKE, WA 99019
 PHONE: 425.677.0502
 FAX: 425.677.0503
 HTTP: WWW.DHDARCHITECTURE.COM

AN2353 CREEK SIDE NSB
 1800 EAST PARKS HIGHWAY
 WASSILLA, AK 99654

ISSUE BLACK

NO.	DATE	DESCRIPTION
1	10-10-19	ISSUE BLACK
2	11-05-19	ISSUE BLACK



SHEET TITLE:
EXTERIOR ELEVATION

SHEET NUMBER:
A-2.1