

Non-Code Ordinance

By: Public Works Department
Introduced: November 8, 2021
Public Hearing: November 22, 2021
Adopted: November 22, 2021

Yes: Brown, Graham, Harvey, Johnson, Sullivan-Leonard, Velock
No: None
Absent: None

**City of Wasilla
Ordinance Serial No. 21-22**

An Ordinance Of The Wasilla City Council Amending The Fiscal Year 2022 Budget By Appropriating \$27,000 From The Sewer Fund, Fund Balance And \$27,000 From The Water Fund, Fund Balance For Hurley Circle Utility Extensions Engineering Services.

Section 1. Classification. This is a non-code ordinance.

Section 2. Purpose. To appropriate funding from the sewer and water funds for Hurley Circle utility extensions engineering services.

Section 3. Appropriation of Funds. The funds are appropriated to the following:

Hurley Circle Sewer Extension	310-4359-435.45-37	\$27,000
Hurley Circle Water Extension	320-4369-436.45-73	\$27,000

Section 4. Source of Funds.

Sewer Fund, Fund Balance	310-0000-250.10-10	\$27,000
Water Fund, Fund Balance	320-0000-253.20-10	\$27,000

Section 5. Effective Date. This ordinance shall take effect upon adoption.

ADOPTED by the Wasilla City Council on November 22, 2021.



Glenda D. Ledford, Mayor

ATTEST:



Sarah Stanifer, MMC, Deputy City Clerk

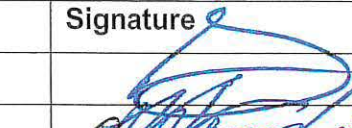

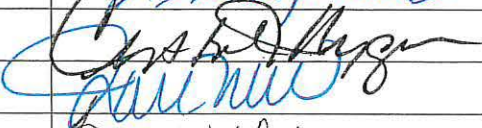

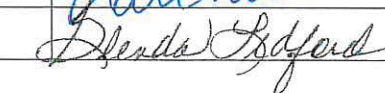
[SEAL]

**City of Wasilla
Legislative Staff Report
Ordinance Serial No. 21-22
(Non-Code Ordinance)**

Amending The Fiscal Year 2022 Budget By Appropriating \$27,000 From The Sewer Fund, Fund Balance And \$27,000 From The Water Fund, Fund Balance For Hurly Circle Utility Extensions Engineering Services.

Originator: Public Works Director
Date: 10/27/2021

Agenda of: 11/8/2021

Route to:	Department Head	Signature	Date
X	Public Works Director		10/26/21
X	Finance Director		10-27-21
X	Deputy Administrator		10/27/21
X	City Clerk		10/26/21
X	Mayor		10/27/21

Fiscal Impact: yes or no **Funds Available:** yes

Account name/number: Hurley Circle Sewer Ext. 310-4359-435.45-37 \$27,000
Hurley Circle Water Ext. 320-4369-436.45-73 \$27,000

Attachments: Ordinance Serial No. 21-22 (1 page)
HDL Proposal (6 pages)

Summary Statement: This ordinance is proposed to amend the fiscal year 2022 budget by appropriating \$54,000 from the sewer and water enterprise funds for engineering services to design sewer and water utility extensions to Hurly Circle. The city committed to Katie Hurly in 1999 that these utilities would be installed in conjunction with the Fred Meyer development. This project was never initiated by the city and the heirs to the property are seeking to have this work completed in 2022. This ordinance provides funding for the engineering contract to proceed for the Hurly Circle utility extension project.

Proposed Action: Introduce and set the ordinance for public hearing.

October 22, 2021

Archie Giddings
Public Works Director
City of Wasilla
290 E. Herning Ave
Wasilla, AK 99654

Civil
Engineering

Geotechnical
Engineering

Transportation
Engineering

Aviation
Engineering

W/WW
Engineering

Environmental
Services

Surveying &
Mapping

Construction
Administration

Material
Testing

Subject: Revised Scope and Cost Proposal
Hurley Circle Water/Sewer Extension

HDL Engineering Consultants, LLC (HDL) is pleased to present this proposal for professional services to extend water and sewer service to three properties located on Hurley Circle in Wasilla. This project includes professional services for topographic survey, easement acquisition, water/sewer pipeline design, Alaska Department of Environmental Conservation (ADEC) permitting, and Construction Administration/Inspection. The City of Wasilla has indicated that this project may be constructed without traditional public bidding using force account labor, or through a public bidding process. Therefore, we have included bid phase services as an alternate.

Scope of Services

We propose to provide professional the following services in support of the project:

Task 1 – Design Phase Services

HDL will provide design services required to prepare a package of plans and special provisions to the Municipality of Anchorage Standard Specifications (MASS) to extend water and sewer service from near the eastern corner of the Fred Meyer Building to the end of Hurley Circle to provide service to Lots 6A, 7A, and 7B. We anticipate the following major work items under this task:

Surveying/Mapping

HDL will perform a topographic survey of the proposed water and sewer utility routes roughly shown on the attached survey limits sketch. Within the survey limits, we will locate above ground improvements, buildings, structures and pavement. We will survey above ground evidence of utilities within the topo limits, and as-built water and sewer structures as available. We will file a utility locate request and survey underground utility locate marks as provided by the responding utilities.

We will set two horizontal survey control points and two Temporary Bench Marks (TBMs) within the project area to facilitate construction. Horizontal and vertical control datums will be based on an NGS OPUS solution of one of the control

points, and checked with an OPUS solution on the other. The horizontal datum will be Alaska State Plane, Zone 4 and NAVD88(Geoid12B) as determined by the OPUS Solutions. This will correspond to the datum of the FEMA flood panel 0200218085F that applies to properties along Wasilla Lake. We will search for and recover existing property corner monuments within the topo limits as applicable to Lots 6A and 7A, and sufficient to locate existing easements as well as provide the basis for a new utility easement across Lot 7A.

We will reduce the data into a topographic design base map having a Triangular Irregular Network (TIN) Surface capable of generating 1-foot contours in Civil 3D 2019. We will prepare a Survey Control drawing having the basis of control and show the horizontal and vertical control points to guide construction. The property corner monuments will also be shown, along with a best-fit location of the property lines and road Right-of-Way (ROW) lines.

Easement Exhibit

Once the utility easement needs are identified across Lot 7A, we will prepare an easement exhibit having a legal description and parcel plat depicting the easement to be acquired, with signature blocks for the affected owner's signature. We will request a title report for Lot 7A to identify land ownership status to assist with development of the easement documents. Existing easements disclosed by the title report will be shown on the easement parcel plat exhibit.

95% Plans, Specifications, and Estimate

After completion of topographic survey, HDL will prepare an assembly of engineered drawings and specifications to the 95% completion level. Design will include water and sewer main extensions along with Wasilla's standard septic tank effluent pump (STEP) system and water service connection to Lot 6A, as well as service stub-outs to Lots 7A and 7B. Specifications and contract documents will be based on the City of Wasilla's standard modifications to MASS. Construction plans and specifications will be delivered in PDF format for review by Wasilla's staff.

Final Plans, Specifications, and Estimate

We will address comments received from Wasilla on the 95% design package and finalize the documents. The completed plans and specifications will then be submitted to ADEC for review and Approval to Construct (see task description below). Any comments from ADEC will be incorporated into the construction documents.

We will also update the construction cost estimate to reflect any changes identified during final detailing of the work.

The final deliverables for this task will be final 11"x17" plans, stamped and signed by a professional engineer registered in the State of Alaska, a completed Project Manual including general contract requirements and special provisions to MASS, and an engineer's construction cost estimate. We will provide deliverables electronically in PDF format for Wasilla's use.

ADEC Approval to Construct

We will submit applications, stamped design drawings, specifications, and design calculations to ADEC for Approval to Construct the proposed project. HDL will pay permitting fees directly to ADEC and deliver a hard-copy submittal to the ADEC office in Wasilla.

Assumptions

The following basic assumptions were used to prepare this estimate:

1. No geotechnical investigation and permitting in accordance with the National Environmental Policy Act (NEPA) is included, nor is it required to complete the project.
2. Topographical Surveying will be performed during snow-on, winter conditions including up to 18" of snow cover in unplowed areas.
3. Utility relocations will not be required to complete the work.
4. Bid phase services are not included in our cost proposal. If the project is publically bid, HDL can provide these services for an additional cost under an amendment to our contract.

Schedule

We understand that Wasilla intends for this project to begin construction as soon as possible during the summer construction season. To meet that schedule, HDL will complete the design scope of work and submit our application for ADEC Approval to Construct by mid-March 2022. This will allow for a construction contract award and material deliveries in time for an anticipated June 1, 2022 construction start date.

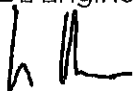
Cost Proposal

We propose to provide the aforementioned services for Tasks 1 and 3 on a time and expenses basis at our published hourly labor rates and standard 10% mark-up on subcontracts for a cost not to exceed **\$53,910** as detailed on the attached worksheet.

We look forward to working with you on this project. If you have any questions, you can contact me at (907) 746-5230.

Sincerely,

HDL Engineering Consultants, LLC



Chris Bowman, PE

Senior Civil Engineer

e: cbowman@hdlalaska.com | o: 907.746.5230

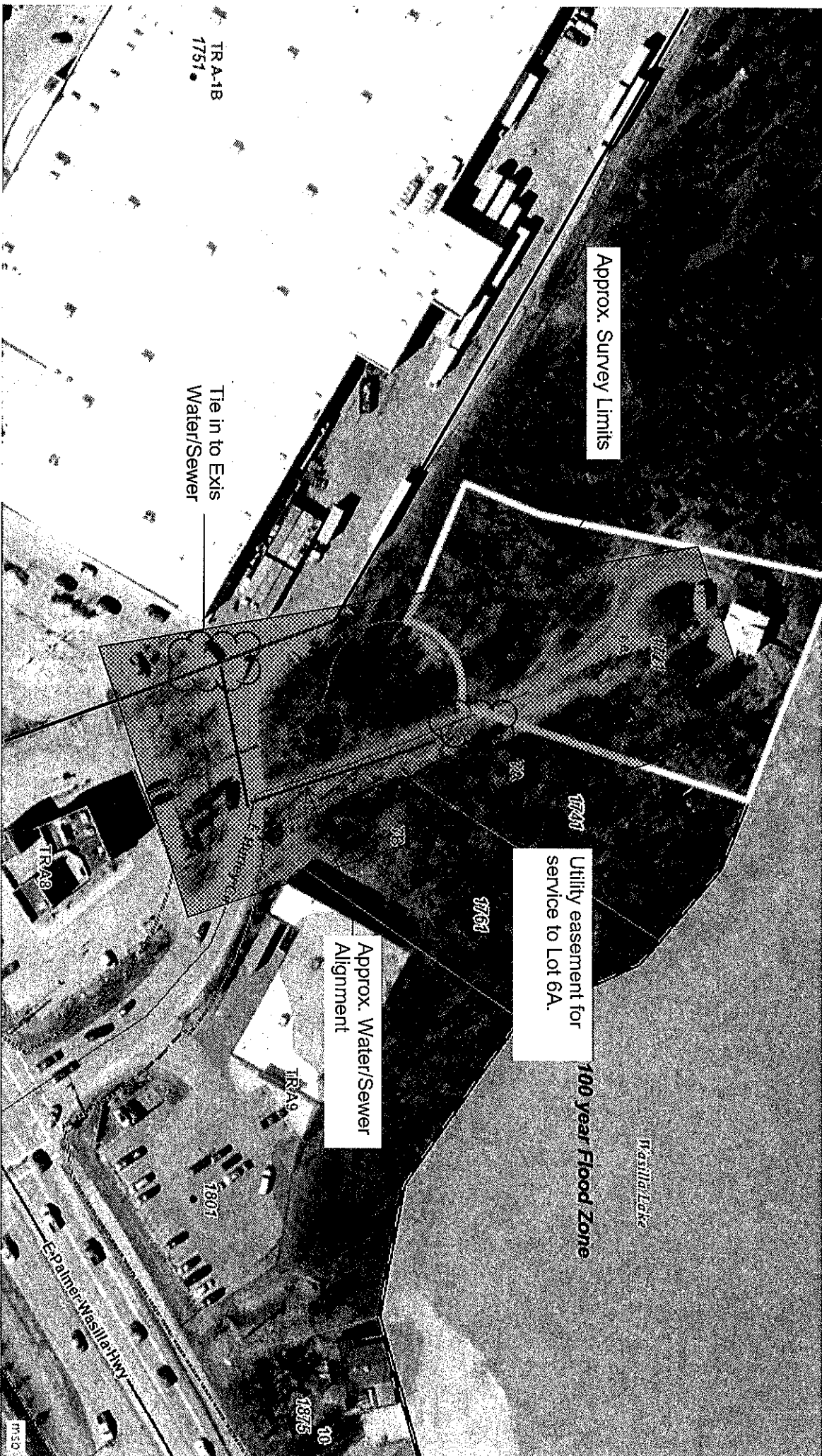
Attach: Survey Limits (1 Page)
HDL Cost Worksheet (1 page)

CC: David Lundin, PE (HDL)



FEE PROPOSAL WORKSHEET
Engineering Services for
Hurley Circle Water/Sewer Extension

<u>TASK</u>	<u>ACTIVITY</u>	<u>QTY</u>	<u>RATE</u>	<u>HDL LABOR*</u>	<u>REIMBURSABLE EXPENSES</u>	<u>SUB-CONTRACTS</u>	<u>SUBTOTAL</u>	<u>TOTAL</u>
1.0	Design Phase Services							\$53,790
1.1	<u>Project Management/Coordination</u>						\$1,530	
	Principal Civil Engineer	2 hrs	@ \$185	\$370				
	Senior Civil Engineer	8 hrs	@ \$100	\$800				
	Clerical	4 hrs	@ \$90	\$360				
1.2	<u>Surveying/Mapping</u>						\$23,860	
	Survey & Mapping Manager	4 hrs	@ \$185	\$740				
	Senior Land Surveyor	16 hrs	@ \$180	\$2,880				
	Land Surveyor	64 hrs	@ \$125	\$8,000				
	Survey Technician	16 hrs	@ \$105	\$1,680				
	2-Person Survey Crew	48 hrs	@ \$220	\$10,560				
1.3							\$3,440	
	Survey & Mapping Manager	2 hrs	@ \$185	\$370				
	Senior Land Surveyor	4 hrs	@ \$180	\$720				
	Land Surveyor	16 hrs	@ \$125	\$2,000				
	Title Report (1)	1 hrs	@ \$350		\$350			
1.4	<u>95% Plans, Specifications and Estimate</u>						\$16,100	
	Principal Civil Engineer	8 hrs	@ \$185	\$1,480				
	Senior Civil Engineer	24 hrs	@ \$155	\$3,720				
	Engineering Assistant	40 hrs	@ \$100	\$4,000				
	Drafter	60 hrs	@ \$115	\$6,900				
1.5	<u>Final Plans, Specifications, and Estimate</u>						\$5,420	
	Principal Civil Engineer	4 hrs	@ \$185	\$740				
	Senior Civil Engineer	8 hrs	@ \$155	\$1,240				
	Engineering Assistant	16 hrs	@ \$100	\$1,600				
	Drafter	16 hrs	@ \$115	\$1,840				
1.6	<u>ADEC Approval to Construct</u>						\$3,440	
	Principal Civil Engineer	2 hrs	@ \$185	\$370				
	Civil Engineer	4 hrs	@ \$155	\$620				
	Engineering Assistant	16 hrs	@ \$100	\$1,600				
	Permit Fees	1 allow	@ \$850		\$850			
Subtotal				\$52,590	\$1,200	\$0		\$53,790
Markup**					\$120	\$0		\$120
Total Fee				\$52,590	\$1,320	\$0		\$53,910
*also includes those expenses charged without a markup								
**10% for subcontracts, 10% for reimbursable expenses								



Approx. Survey Limits

Tie in to Exis
Water/Sewer

Utility easement for
service to Lot 6A.

Approx. Water/Sewer
Alignment

100 year Flood Zone

Westler Hwy

Epalmere Westler Hwy

TR A-1B
1751

TR A-8

TR A-9

1801

1875

1750