

By: Public Works Department  
Adopted: October 8, 2012  
Vote: Katkus, Harris, Holler, Sullivan-Leonard and Wall in favor  
Woodruff absent

**CITY OF WASILLA  
RESOLUTION SERIAL NO. 12-32**

**A RESOLUTION OF THE WASILLA CITY COUNCIL AUTHORIZING THE MAYOR TO EXECUTE A LAND-USE AGREEMENT WITH THE POP WARNER MAT-SU STEELERS FOOTBALL PROGRAM TO USE A PORTION OF UNDEVELOPED BUMPUS BALLFIELD PROPERTY TO BUILD AND USE FOOTBALL FIELDS FOR A PERIOD OF 10 YEARS WITH RENEWAL OPTIONS.**

---

WHEREAS, the Pop Warner Program has been in existence for 16 years in the Valley and serves youth ages 5-14; and

WHEREAS, currently this program has no Home Fields in the Valley making it necessary to travel to Eagle River, Anchorage, and the Peninsula for all games; and

WHEREAS, the creation of Home Fields in the City of Wasilla will greatly enhance the Pop Warner program by attracting more players to expand their current roster of 300 players; and

WHEREAS, the Mat-Su Steelers have volunteers and funding to create the area for Home Fields use at no cost to the City; and

WHEREAS, bringing other teams to the City of Wasilla will result in additional economic stimulus to the local merchants; and

WHEREAS, the Pop Warner Program have a solid reputation through the entire Nation as well as the Mat-Su Valley; and


WHEREAS, the use has been recommended for approval by the Parks and Recreation Commission through Resolution Serial No. 12-02, and it is highly recommended by the Director of Recreational and Cultural Services.

NOW, THEREFORE, BE IT RESOLVED, that the Wasilla City Council authorizes the Mayor to execute a land-use agreement with the Pop Warner Mat-Su Steelers for an initial period of 10 years to construct football fields at the Bumpus Ballfield Facility and use those fields at no cost to the City.

ADOPTED by the Wasilla City Council on October 8, 2012.

  
\_\_\_\_\_  
VERNE E. RUPRIGHT, Mayor

ATTEST:

  
\_\_\_\_\_  
KRISTIE SMITHERS, MMC, City Clerk

[SEAL]



**RESOLUTION SERIAL No. 12-32: A RESOLUTION OF THE WASILLA CITY COUNCIL AUTHORIZING THE MAYOR TO EXECUTE A LAND-USE AGREEMENT WITH THE POP WARNER MAT-SU STEELERS FOOTBALL PROGRAM TO USE A PORTION OF UNDEVELOPED BUMPUS BALLFIELD PROPERTY TO BUILD AND USE FOOTBALL FIELDS FOR A PERIOD OF 10 YEARS WITH RENEWAL OPTIONS.**

**Agenda of:** October 8, 2012

**Date:** September 26, 2012

**Originator:** John Combs, Director of Recreation and Cultural Services

Route to:	Department	Signature	Date
X	Public Works Director		9/26/12
X	Rec & Cultural Services Manager		9/28/2012
X	Finance Director		9-26-12
X	Interim Deputy Administrator		9/27/12
X	City Clerk		9/27/12

**REVIEWED BY MAYOR VERNE E. RUPRIGHT:**

**FISCAL IMPACT:**  yes or  No

**Account name/number:**

**Attachments:** Parks & Recreation Commission Resolution Serial No. 12-02 (2 pages)  
 Pop Warner Mat-Su Steelers Letter of Intent (2 pages)  
 Map (1 page)

**SUMMARY STATEMENT:** The Pop Warner Mat-Su Steelers are seeking to use an undeveloped portion (east 400 feet south of Mystery Avenue) of the Bumpus Ballfield property to build home fields for their program. The fields will be built with volunteer help and funding raised by their organization. The project is proposed to be allowed through a land-use agreement with the following terms and conditions:

- 1) Pop Warner Mat-Su Steelers will be responsible for construction and maintenance of the football fields.

- 2) Pop Warner Mat-Su Steelers will be responsible to provide insurance necessary for this type of project and use.
- 3) Once constructed, the football fields will be open to the public when not in conflict with Pop Warner Mat-Su Steeler activities.
- 4) Pop Warner Mat-Su Steelers will coordinate construction activities with the Public Works Department and adjust the project as needed so as to not interfere with the existing trail system.
- 5) Pop Warner Mat-Su Steelers agree to comply with Park Use Rules as defined in the Wasilla Municipal Code.
- 6) The Land Use Agreement will be for an initial period of 10 years with options to renew subject to City Council Approval.

**STAFF RECOMMENDATION:** Adopt Resolution Serial No. 12-32.

**CITY OF WASILLA  
WASILLA PARKS AND RECREATION COMMISSION  
RESOLUTION SERIAL NO. 12-02**

**A RESOLUTION OF SUPPORT FOR ALASKA SOUTH CENTRAL POP WARNER FOOTBALL ASSOCIATION / MAT-SU STEELERS FOOTBALL TO LEASE 10 ACRES OF LAND AT BUMPUS RECREATION AREA, THE EAST 400 FEET OF TAX PARCEL D4 SOUTH OF MYSTERY AVENUE WITHIN SECTION 5, TOWNSHIP 17 NORTH, RANGE 1 WEST, SEWARD MERIDIAN, ALASKA.**

---

WHEREAS, pursuant to WMC 2.64.010.A, the purpose of the Wasilla Parks and Recreation Commission is to advise the City on matters pertaining to parks and recreation facilities; and

WHEREAS, the Pop Warner Mat-Su Steelers, propose developing a football and cheerleading facility to incorporate two full size football game fields, practice field, equipment storage building, concession stand, maintenance shed, announcement booth, and large parking area, all located at the East 400 feet of Tax Parcel D4 South of Mystery Avenue within section 5, Township 17 North, Range 1 West, Seward Meridian, Alaska; and

WHEREAS, there are no dedicated home football fields for the Pop Warner program in the Mat-Su Valley serving children ages 5 to 14; and

WHEREAS, funding for the project will be through sponsors, grants, fundraising, and donations secured solely by the Pop Warner program and the land is near the Bumpus Ball Fields which is already zoned for recreational use; and

WHEREAS, youth football will bring revenue to the City of Wasilla from visiting competing teams from Eagle River, Anchorage, and other programs; and

WHEREAS, the facility will be solely operated and maintained by the Pop Warner Football Association in addition to the Maureen McCombs Equestrian Trail portion that

is nominally present in the subject property, will be incorporated in the final usage of the land use permit, and the Pop Warner program has agreed to "adopt" the entire trail to keep it cleaned and usable.

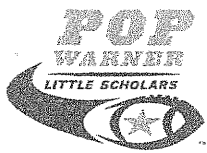
NOW, THEREFORE, BE IT RESOLVED, that the Wasilla Parks and Recreation Commission supports the lease of 10 acres to Alaska South Central Pop Warner Football Association / Mat-Su Steelers.

ADOPTED by the Wasilla Parks and Recreation Commission on September 19, 2012.

  
\_\_\_\_\_  
JOAN MATTHEWS, CO-CHAIR  
Parks and Recreation Commission

ATTEST:

  
\_\_\_\_\_  
JOHN COMBS  
Director of Recreation and Cultural Services



Alaska South Central **POP WARNER** Football Assn., Inc.  
"a non profit corporation"  
PO Box 773625  
Eagle River, AK. 99577  
(907) 694-7850 Fax: 694-7851



Letter of intent from Pop Warner Matsu Steelers Football & Cheer association  
to the City of Wasilla.

STAN BROWN JR.  
*President*

CLINT SPENCER  
*Vice-President*

ASHLEY JEFFERS  
*Secretary*

MADISYN VREM  
*Treasurer*

LENWARD TOUSSANT JR.  
*Football Director*

Gary Brown  
*Fundraising Chair*

Chantelle Lewis  
*Scholastics Coordinator*

Rachael Jeffers  
*Board Member*

KJ Villanueva  
*Board Member*

It is our intention to ask the City of Wasilla, in cooperation with the Department of Public Works and the Parks and Recreation dept. to secure a lease for 10 acres of undeveloped land near the Bumpus ballfields for the purpose of developing a Football and Cheerleading facility that would incorporate 2 full size football game fields, a very large football and cheer practice field, an equipment storage building, a concession stand, a maintenance shed, an announcement booth and a large parking area for the participants, coaches and staff. We will be funding this project through Sponsors, NFL new field grants from Pop Warner, fundraising and donations. We would like to secure a 50 year lease for the use of this property. We will fence in and secure the entire property and be completely self sufficient in the maintenance of said property. There will be a paid maintenance person that will take care of the facility, just as we do for the Pop Warner Lions Park facility located in Eagle River. We plan on using some of the same methods to develop this facility as we did to develop the Eagle River facility. We carry a large amount of insurance through Pop Warner and we have the backing of the league board at Alaska Southcentral Pop Warner Football & Cheer. This facility would serve between 200 to 300 players and we have been growing steadily for the past several years. Matsu Steelers have been in the valley for 16 years now and we are a scholastically based football and cheer program that has academic awards, including scholarship money for college through the National Pop Warner program. Pop Warner football has been in existence

since 1929 and is the largest youth football and cheer organization in the world with over 425,000 participants in 42 states and several countries.

There are several soccer and baseball facilities located in the valley, but there are no dedicated football fields, besides the high schools. We would like to change this and develop a safe, fun, practice and game facility that would serve hundreds of kids, parents in the valley, as well as bring in revenue from the competing teams parents, that would be driving out to the valley and renting hotels, eating at restaurants, buying food and fuel. Our future goals would be to host Alaska Football tournaments that would draw in hundreds of players and all the revenue to local valley businesses for accommodations, food, fuel, entertainment, shopping and tourism.

We are an Alaskan Non Profit 501c(3) corporation in good standing. Tax id # 91-1791440.

We have submitted a rough draft sketch of our plans, but upon approval, we will be seeking a full engineering plan for submittal to the proper department.

Thank you for your consideration in this matter.

Clint Spencer-Matsu Steelers Football President/ ASCPW League Vice President

7362 W. Parks Hwy. # 585

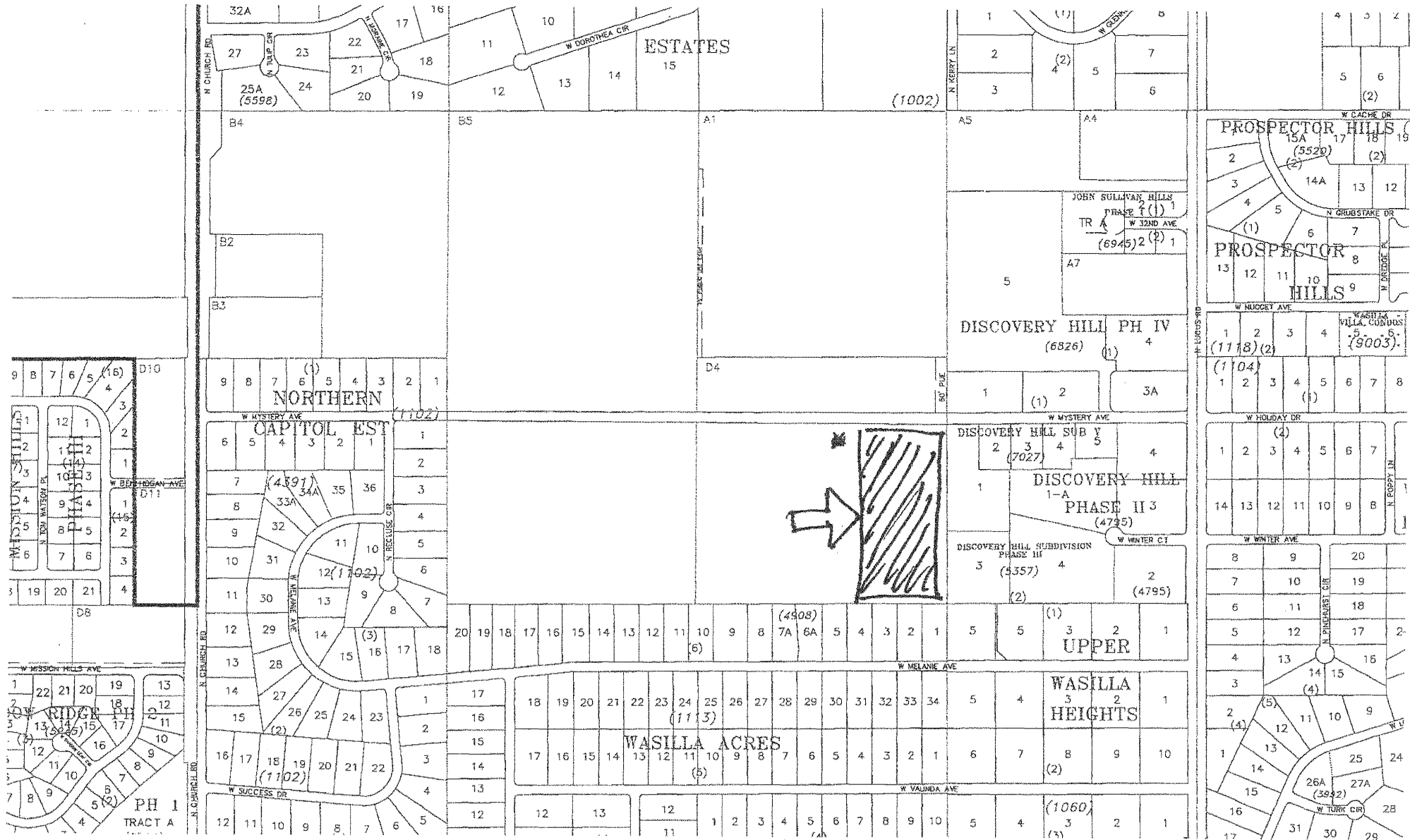
Wasilla, Ak 99623

(907) 357-3024 Home (907) 715-0003 Cell

E-mail: [spencfam@mtaonline.net](mailto:spencfam@mtaonline.net)

Website: [www.matsusteelers.net](http://www.matsusteelers.net)

N



\* THE EAST 400 FEET OF TAX PARCEL D4 SOUTH OF MYSTERY AVENUE  
 WITHIN SECTION 5, TOWNSHIP 17 NORTH, RANGE 1 WEST, SEWARD MERIDIAN, ALASKA.