

By: Public Works Department

Adopted: October 28, 2013

Vote: Buswell, Harris, O'Barr, Sullivan-Leonard, Wall and Wilson in favor

**CITY OF WASILLA
RESOLUTION SERIAL NO. 13-28**

A resolution of the Wasilla City Council supporting the fiscal year 2015 Capital Improvement Program and operating funding requests.

WHEREAS, the City of Wasilla is planning for Fiscal Year 2015 capital improvements as part of its five year capital improvement program; and

WHEREAS, the Wasilla Planning Commission adopted Resolution Serial No. 13-11 on September 10, 2013 in support of the projects listed below in accordance with Wasilla Municipal Code 2.60.010; and

WHEREAS, the City seeks support from the State of Alaska Legislature to meet its capital improvements needs and operating funds for Mat-Su Youth Court.

NOW, THEREFORE, BE IT RESOLVED by the Wasilla City Council, that the following projects are hereby identified as priorities for Fiscal Year 2015.

Mat-Su Youth Court Operating Funds	\$75,000
Airport Runway Extension to 5,000 Feet (Phase 1)	\$5 million
Water Utility Improvements	\$900,000
New Wasilla Public Library Match	\$8.2 million
Re-appropriation of Lake Lucile Dam Funding	\$180,000
Cottonwood Creek Covered Bridge and Trails	\$425,000
Historic Townsite Restroom Building	\$300,000
Menard Center Events Marquee Sign	\$50,000
Iditapark Trail and Lighting Improvements	\$225,000

ADOPTED by the Wasilla City Council on October 28, 2013.


VERNE E. RUPRIGHT, Mayor

ATTEST:



KRISTIE SMITHERS, MMC, City Clerk

[SEAL]


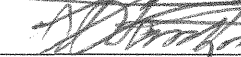


CITY COUNCIL LEGISLATION STAFF REPORT

Resolution Serial No. 13-28: Supporting the fiscal year 2015 Capital Improvement Program and Operating State funding requests.

Originator: Public Works Director

Date: October 16, 2013

Agenda of: October 28, 2013

Route to:	Department Head	Signature	Date
X	Public Works Director		10/16/13
X	Finance Director		10/17/13
X	Deputy Administrator		10/22/13
X	City Clerk		10/22/13

Reviewed by Mayor Verne E. Rupright:

Fiscal Impact: yes or noFunds Available: yes or no

Account name/number:

Attachments: Planning Commission Resolution Serial No. 13-11 (3 pages)
Project support information and diagrams (8 pages)

Summary Statement: This resolution is part of the administration's annual effort to secure state funding for City capital projects and operating cost. The Planning Commission adopted Resolution Serial N0. 13-11 in support of the following capital projects in accordance with WMC 2.60(A):

Mat-Su Youth Court Operating Funds**\$75,000**

The Mat-Su Youth Court is a state-sanctioned court that operates in the Matanuska-Susitna Valley, Alaska, which deals with first-time juvenile offenders that have committed misdemeanors. A three-judge panel hands down sentences consisting of community work service hours, an essay, and other sanctions, such as a letter of apology, viewing an adult arraignment, a tour of the Mat-Su Pretrial Facility, a drug/alcohol assessment, or a Juvenile Anti-Shoplifting class.

Airport Runway Extension to 5,000 Feet (Phase 1)**\$5 million**

This funding will be used to extend the Wasilla Airport Runway from 3,700 feet to 5,000 feet. The total cost for this project is \$15 million, and the project will be phased to include an extension of Taxiway B. This project will help economic opportunities at the airport and support more jobs in the region.

Since 2005, the City has been very successful in receiving 95 percent Federal funding for improvements at the airport. However, projects such as the newly completed airport access road,

and water main extension that is currently under construction are not directly related to aviation and as such, the FAA will not provide funding for these types of projects. In response, the administration was successful in obtaining state funding for the road and water line. Likewise, the proposed runway extension does not compete well at this time for FAA funding when compared to other aviation needs in the state. The administration believes the runway extension is the next priority for the airport as it will expand opportunities for air taxi services and air cargo services in Wasilla and stimulate business activity at the airport.

A secondary benefit to this project is that the runway extension needs vast quantities of fill in the initial phases, and the fill will be excavated and hauled from a large hill next to the existing apron area, thereby creating more apron area for lease lots and aircraft tie-down spaces.

Water Utility Improvements

\$900,000

This funding request is designed to capture basic infrastructure funding for a smaller type project in anticipation of reduced capital funding by the state. The City received basic infrastructure funding from the state last year for roads (\$1.5 million) and the sewer treatment plant (\$3 million). Water utility improvements are the next priority for the public works department.

Half of this funding will be used for water well development to increase source water capacity to meet future growth in water utility customers. There are two areas within the City to explore for additional well water; one is along Spruce Avenue and the other is by the Menard Center and Airport. Identifying and developing all of the source water potential is critical for long-term growth of the City.

The other half of this funding will also be used to complete the pump house at the E. Susitna Reservoir facility by adding booster pumps and a water main for the upper pressure zone. The E. Susitna well house was completed in 2007 to function at a basic level and serve the downtown pressure zone. The well house was constructed with piping and space available to add booster pumps. The booster pumps are needed to serve future development along the Palmer-Wasilla Highway extension near Home Depot due to the higher elevation in the area causing low water pressure relative to the downtown area.

New Wasilla Public Library Match

\$8.2 million

This funding will provide a 50 percent match to construct a 24,000 square foot public library adjacent to the Wasilla Middle School at the corner of Swanson Avenue and Crusey Street. Total project cost is \$16.4 million to replace the existing 8,000 square foot library built in 1978 that had over 97,000 patrons through the door last year. This project graduated from the Foraker Pre-development Program in 2012.

The administration submitted its application to the Library Construction and Major Expansion Matching Grant program in August 2013 for the 50 percent match, as authorized by City Council Resolution Serial No. 13-18. See attached site diagram and cost breakdown for the new library.

In addition to the projects listed above, the administration is proposing the following projects as legislative priorities:

Re-appropriation of Lake Lucile Dam Funding

\$180,000

The original state grant for the dam project was in the amount of \$500,000. The project is complete and a balance of \$180,000 remains that can be re-appropriated for other projects or

equipment to enhance the water quality of Lake Lucile. The administration is proposing to use the balance of funding to purchase a weed harvester (see attached information). Weed control continues to be a huge problem in the lake and using this type of equipment provides a cost effective way to remove a set quantity of weeds every year.

Historic Townsite Restroom Building

\$300,000

The administration has made great strides over the last 5 years with improvements to the historic townsite. The historic townsite is seeing more use with visitors and activities, including an expanded Farmer's Market. Users and visitors to the townsite have no restroom facilities and use the restrooms at the museum or library. This project will provide a restroom building connected to the municipal water and sewer system that will allow for more use of the townsite.

Cottonwood Creek Covered Bridge and Trail Improvements

\$425,000

The administration acquired 9 acres of Cottonwood Creek greenbelt area in 2010 from First National Bank for a park next to Sportsmen' Warehouse. The administration also worked with the Church of the Nazarene to acquire land between the creek and the Palmer-Wasilla Highway for a trail head and access to the greenbelt park. The administration received \$75,000 in FY2013 to construct the trail head and obtained a temporary bridge structure to be placed over the creek next year. The long-term plan is to construct a covered bridge and trail system along the creek with this funding request.

Iditapark Trail and Lighting Improvements

\$225,000

This project will complete the paving of pathways in Iditapark and provide lighting along the pathways to promote winter use of the trails in the park.

Menard Center Events Marquee Sign

\$50,000

This funding request is to purchase and install an events marquee sign along S. Mack Drive in front of the Menard Center to take advantage of the Clapp-Mack Road Extension project that will bring an estimated 2,000 vehicles a day by the facility.

STAFF RECOMMENDATION: Adopt Resolution Serial No. 13-28.

By: Planning
Public Hearing: 09/10/13
Adopted: 09/10/13

**WASILLA PLANNING COMMISSION
RESOLUTION SERIAL NO. 13-11**

**A RESOLUTION OF THE WASILLA PLANNING COMMISSION SUPPORTING THE
GOALS AND INITIATIVES FOR THE ANNUAL CAPITAL IMPROVEMENT
PROGRAM.**

WHEREAS, the City of Wasilla plans for many important road, water and sewer, parks and other facility improvement projects each fiscal year to promote the health, safety, economy and general welfare of this community; and

WHEREAS, the Wasilla City Council adopts a Capital Improvement Program each year as part of the budget process; and

WHEREAS, Section 2.60(A) of the Wasilla Municipal Code requires the Planning Commission to annually make recommendations to the City Council regarding a capital improvement program which will guide the development and funding of projects within the City of Wasilla.

NOW, THEREFORE, BE IT RESOLVED, that the Wasilla Planning Commission hereby recommends the following projects for FY2015 as the annual priorities:

- 1) Airport Runway Extension to 5,000 feet
\$5 million State Funding Request
- 2) Water Utility Improvements
\$900,000 State Funding Request
- 3) New Wasilla Public Library Match
\$8.2 million State Funding Request
- 4) Road Paving
\$100,000 City Funds
- 5) Townsite Restoration
\$25,000 City Funds

- 6) Lake Lucile Park Improvements
\$25,000 City Funds
- 7) Pederson Park Improvements
\$10,000 City Funds
- 8) Wasilla Lake Park Improvements
\$15,000 City Funds
- 9) Water and Sewer Utility
\$150,000 City Funds
- 10) Menard Sports Center
\$75,000 City Funds

BE IT FURTHER RESOLVED, that the Wasilla Planning Commission hereby recommends the following projects for FY2016 – FY2019 as the priorities for City funding:

- 1) Local Road Paving- \$100,000 annually
- 2) Public Works Maintenance Building- \$50,000 annually to complete in FY2019
- 3) Park Improvements-

Lake Lucile Park Improvements	\$25,000 annually
Bumpus Ballfield Improvements	\$20,000 FY16-FY19
Iditapark Improvements	\$75,000 FY16-FY19
Pederson Park Improvements	\$10,000 FY16
Townsite Improvements	\$60,000 FY16-FY19

- 4) Sewer Utility-

Septic Tank Replacement	\$35,000 annually
Sewer Distribution Repairs	\$25,000 annually

5) Water Utility-

Water Distribution Repairs \$65,000 annually

SCADA and GIS \$25,000 annually

6) Airport-

Match Funding for Apron Development \$125,000 annually

7) Menard Center-

Building and Grounds Improvements \$35,000 annually

8) Museum-

Improvements & Expansion \$150,000 FY16-FY19

APPROVED by the Wasilla Planning Commission on September 10, 2013.

APPROVED:



Daniel Kelly, Jr., Chairman

9/12/13

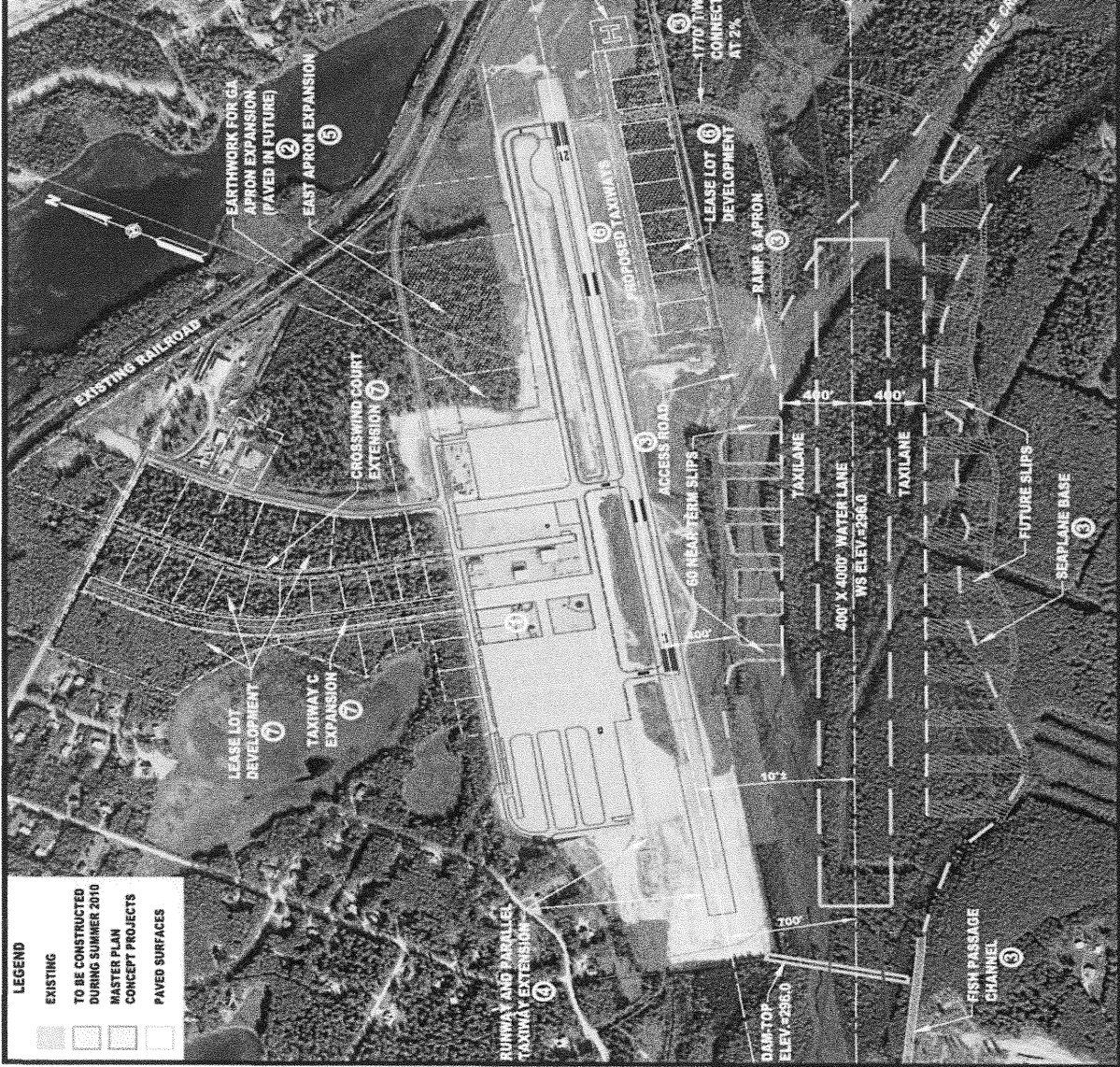
ATTEST:



Tina Crawford, AICP, City Planner

VOTE: Passed Unanimously

DEVELOPMENT TABLE		
Ref. No.	Airport Master Plan Development Option	Est. Construction Cost (2010 Dollars)
NEAR TERM (0-5 Years)		
-	LEFT APPROACH	\$0
1	PILOT/PASSENGER FACILITY	\$300K
2	PAVE GA APRON EXPANSION AND AIRPORT ACCESS ROAD (EARTHWORK CONSTRUCTED DURING SUMMER, 2010)	\$1.0 Million
3	SEAPLANE BASE	\$4.5 Million
4	RUNWAY AND PARALLEL TAXIWAY EXTENSION, AND ITS EQUIPMENT INSTALLATION	\$14.5 Million
	SUBTOTAL	\$22.3 Million
MID TERM (6-10 Years)		
-	AIRPORT WATER AND SEWER	\$4.0 Million
5	EAST APRON EXPANSION	\$8.4 Million
	SUBTOTAL	\$12.4 Million
LONG TERM (11-20 Years)		
6	SOUTH TAXIWAY K AND HELIPORT CONSTRUCTION AND LEASE LOT DEVELOPMENT	\$13.0 Million
7	NORTH AIRPARK DEVELOPMENT (TAXIWAYS C, D, AND CROSSWIND COURT EXTENSION)	\$6.0 Million
	SUBTOTAL	\$19.0 Million
	TOTAL (20 YEARS OF DEVELOPMENT)	\$53.7 Million



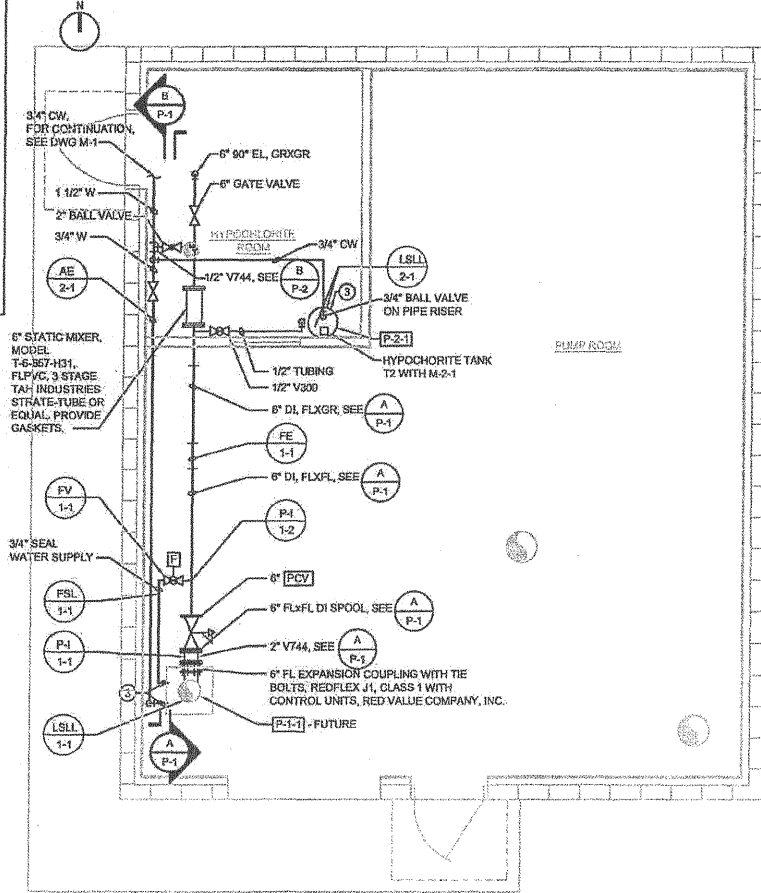
FILE: I:\112803\Drawings\Concept\Drawings\10 2A-1000d.mxd

EQUIPMENT LIST

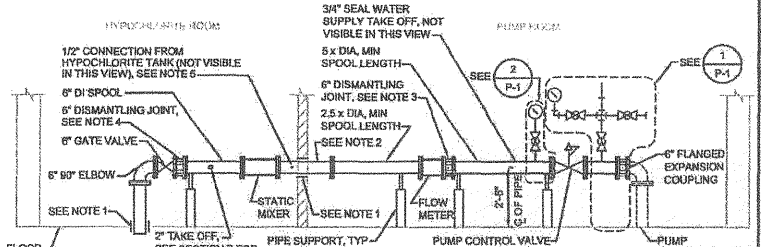
- P-1-1** FUTURE WELL PUMP, NOT IN CONTRACT. BASIS OF DESIGN: GOULD MODEL DLOT-FFTM, 13 STAGE 6x7 THC, MAX 5-IN COLUMN DIAMETER, 1800 RPM, 385 GPM AT 217' TOTAL HEAD, 75% MIN EFFICIENCY, 40 HP MOTOR
- T-2** HYPOCHLORITE TANK, 50 GALLON POLYETHYLENE WITH COVER DRILLED FOR AGITATOR MOUNTING, LMI MODEL 28250 WITH MODEL 10680 AGITATOR AND LIQUID LEVEL SWITCH MODEL NO 28731
- M-2-1** CHEM PUMP, MAX 2.0 GPM, LMI MODEL AA 161-277, ELECTRONIC METERS PUMP, 120V, MOUNTED ON TANK COVER, PROVIDE 1 SPARE PUMP.
- P-2-1** BALL VALVE, MANUFACTURER CERTIFIED FOR CHLORINATED WATER SERVICE
- V300** COMBINATION AIR/VACUUM RELEASE VALVE, APCO MODEL 143C OR EQUAL
- PCV** CLA-VAL MODEL 60-G118Y PUMP CONTROL VALVE, INCLUDING INTERNAL CHECK VALVE FEATURE

SHEET NOTES

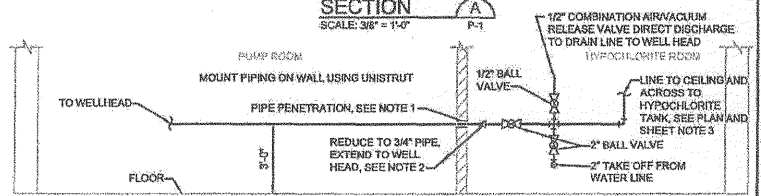
1. WATER PIPE SHALL BE COPPER
2. DI PIPE SHALL BE CLASS AWWA-C104 CEMENT LINED, THREADED FOR FLANGE OR GROOVED SHALL BE CLASS. FITTINGS SHALL BE AWWA C110, ABOVE GRADE PIPE SHALL BE SHOP PRIMED WITH EPOXY.
3. PROVIDE AIR GAP AT WATER LINE CONNECTION TO HYPOCHLORITE TANK AND WELL.
4. INSTALL AND TEST PIPING PRIOR TO DISINFECTION.
5. DISINFECT PIPING IN ACCORDANCE WITH AWWA STANDARDS FOR WATER PIPING
6. PRESSURE TEST ARE DUCTILE IRON PIPE AND PIPING TO 150 PSI FOR 2 HOURS WITH LEAKAGE ALLOWANCE PER STANDARD AWWA SPECIFICATIONS.



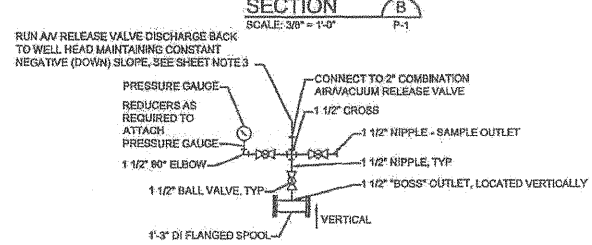
PLAN
SCALE: 3/8" = 1'-0"



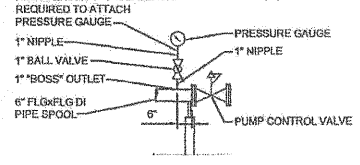
- NOTES:**
1. ALL PENETRATIONS SHALL BE SEALED - ESPECIALLY THOSE BETWEEN PUMP ROOM AND HYPOCHLORITE ROOM.
 2. FLANGE JOINTS SHALL BE SITUATED SUCH THAT NO FLANGE IS CLOSER THAN 1 FOOT TO THE WALL.
 3. INSTALL 6" DISMANTLING JOINT TO ASSIST IN FUTURE ACCESS TO FLOW METER.
 4. INSTALL DISMANTLING JOINT FOR FUTURE ACCESS TO GATE VALVE AND STATIC MIXER.
 5. HYPOCHLORITE FEED PIPING SHALL BE MOUNTED ON ROOM WALL USING UNISTRUT.



- NOTES:**
1. ALL PENETRATIONS SHALL BE SEALED - ESPECIALLY THOSE BETWEEN PUMP ROOM AND HYPOCHLORITE ROOM.
 2. SLOPE DRAIN LINE DOWNWARD TO WELL HEAD.
 3. IT IS THE INTENT OF THE DRAWING TO MOUNT ANCILLARY PIPING ON THE WALL SHOWN AND AT THE ELEVATION SHOWN USING UNISTRUT.



DETAIL 1
SCALE: NTS



DETAIL 2
SCALE: NTS



DESIGN	G. KNOX	VERIFY SCALE	
DR	F. CASTELLO	BAR IS ONE INCH ON ORIGINAL DRAWING.	
CHK	A. STORBO	IF NOT ONE INCH ON THIS SHEET, ADJUST SCALES ACCORDINGLY.	
APVD	F. DAMRON		

CH2MHILL

CITY OF WASILLA
WASILLA, ALASKA

EAST SUSITNA WELL HOUSE
PROCESS PLAN

SHEET	17
DWG	P-1
DATE	JANUARY 2007
PRJG	327384

THIS DOCUMENT, AND THE DESIGN INCORPORATED HEREIN, IS AN INSTRUMENT OF PROFESSIONAL SERVICE, AS THE PROPERTY OF CH2M HILL AND IS NOT TO BE USED, IN WHOLE OR IN PART, FOR ANY OTHER PROJECT WITHOUT THE WRITTEN AUTHORIZATION OF CH2M HILL.



3.0 THE NEW LIBRARY

SUMMARY:

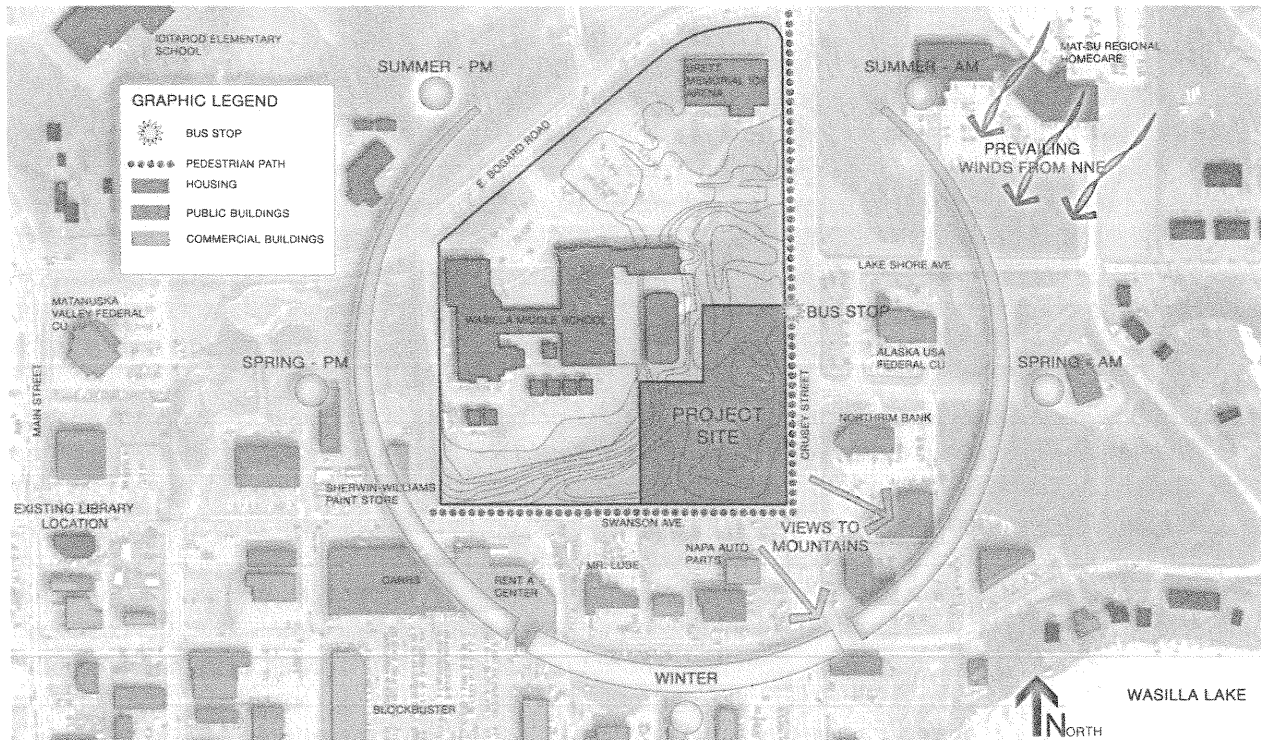
Concept: Civic Signature: Wasilla Library: Community Beacon, A Gateway to Knowledge.

The concept design is the culmination of efforts between the Library Needs Committee, library staff, Foraker Group and McCool Carlson Green Architects (MCG). MCG began the concept design process by having the Committee participate in a "civic signature" exercise (see Appendix) in which the Committee brainstormed words and phrases that best expressed what Wasilla represented to them and/or what a library for Wasilla would represent. Following this exercise MCG synthesized these words and phrases and proposed the civic signature for the Wasilla library; "Community Beacon, A Gateway to Knowledge." This statement was used to inform what the building design concept would communicate architecturally. It was felt that the building needed to be contextually appropriate, with use of materials that would "fit" the site and culture of Wasilla. It was felt that the building needed to be inviting and have a good street presence. The result is a building that is composed of a natural material palette, nestled in the trees with a bright illuminated corner that presents itself to the street.

Refer to the Appendix C for a review of the "Civic Signature" exercise conducted during the design process.

SITE DESIGN

A. Site context:



Wasilla Public Library Concept Design: Site Analysis

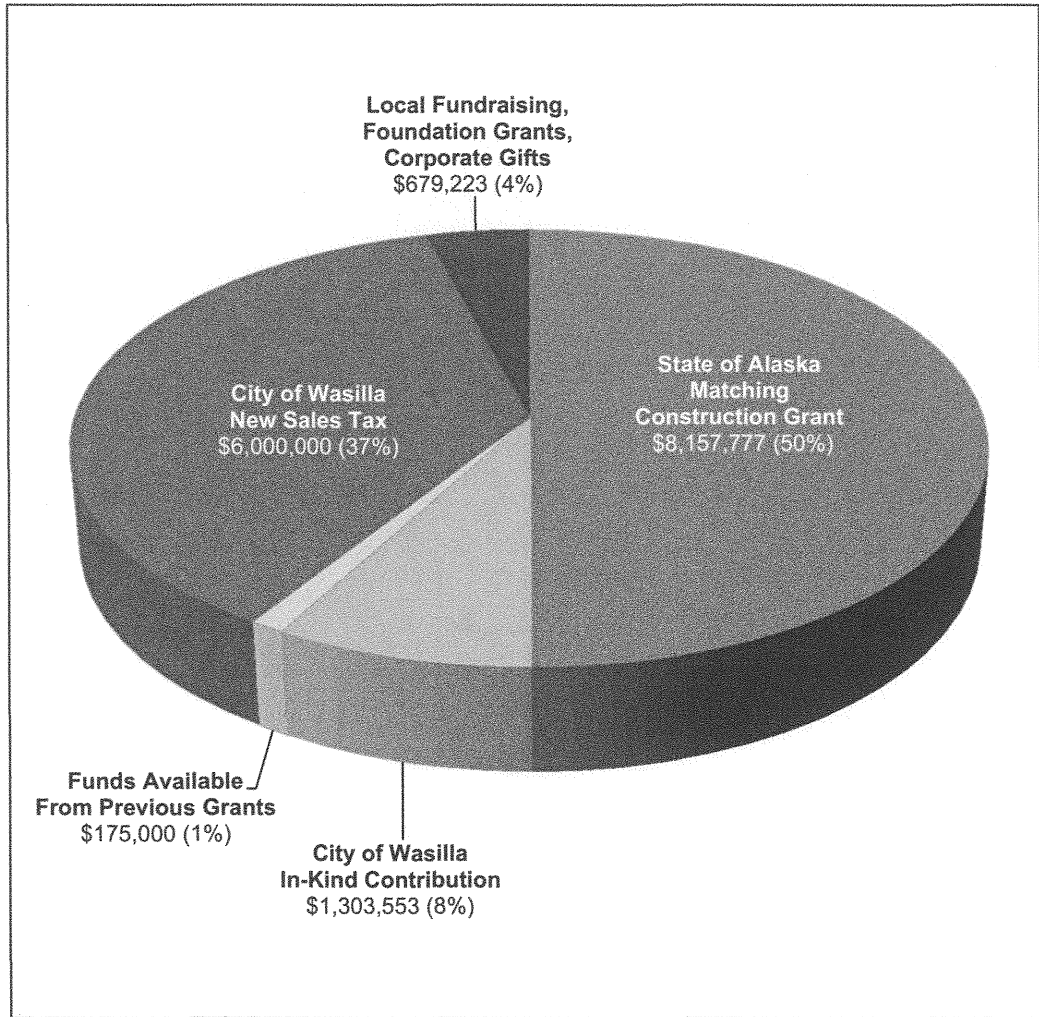
The site for the new Wasilla Public Library is on the corner of Swanson Avenue and Crusey Street in Wasilla, Alaska. The undeveloped, 4 acre site is located adjacent to the Wasilla Middle School and is covered with a variety of birch and spruce trees. The site also has a significant amount of topographical elevation change, generally sloping toward the south / east. To the south and east of the site is a commercial district consisting of banks, shopping centers and automotive stores. The site currently enjoys good southern sun exposure



4.0 PROJECT & OPERATING COSTS

Based upon a project value of \$16,315,553, the City of Wasilla should be eligible for a matching grant in the amount of \$8,157,777.

After securing a matching grant and applying funds already secured, the amount required to complete the project is \$6,679,224. The City of Wasilla is contemplating a sales tax increase to raise \$6,000,000. The remainder, \$679,224, is anticipated to be raised through local fundraising, gifts from companies and grants from foundations.

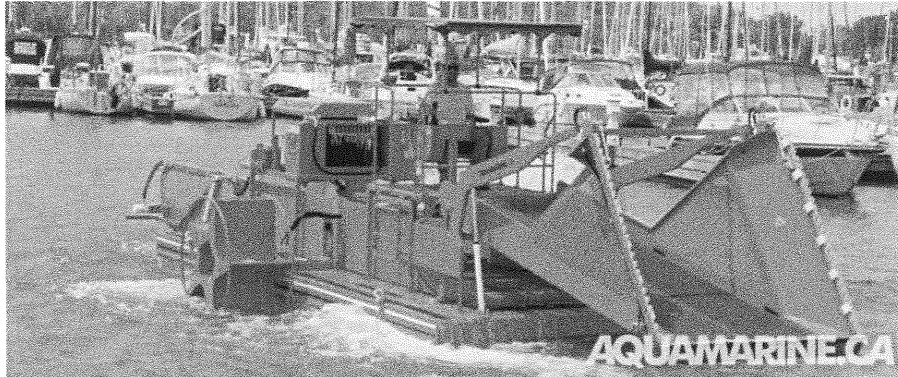


Funding plan for the new Wasilla Public Library.



Home Products Videos Parts / Service Custom Equipment International About Us Contact Us

Aquatic Weed Harvesters



Choose model for more information: [H5](#) | [H6](#) | [H7](#) | [H9](#) | [H11](#)

Aquatic Weed Harvesters are Like Lawnmowers for Aquatic Weeds

Aquamarine aquatic plant harvesters are hydraulically driven with reciprocating knives mounted on the harvesting head to cut the aquatic vegetation. The vegetation is then transferred onto the conveyor system located on the closed deck barge. The storage conveyors are gradually filled up with tightly packed plants and this harvested biomass is then transferred to the shoreline or into a dump truck via a shore conveyor.

Aquamarine designs and manufactures aquatic weed harvesters in a range of sizes to meet our customer's needs.

Please review our various models from H5 to H11. You are invited to complete a site and operational information questionnaire to help us to assist you in selecting the appropriate model.

In addition to our standard aquatic weed harvesters, Aquamarine also designs and manufactures custom equipment. For more information please visit the custom equipment page.

Translate this Page

Select Language

Powered by Google Translate

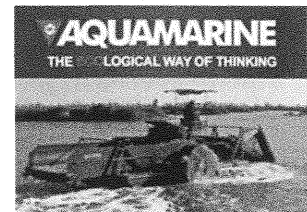
Need Help?



AQUAMARINE manufactures weed harvesting and trash skimming equipment to suit a wide range of applications. If you need help assessing your requirements, fill out the relevant online Site and Operational Information Questionnaire and we will be happy to assist you.

- For Weed Harvesting
- For Trash Skimming

Standard Features



All of Aquamarine's new weed harvesters include as standard equipment:

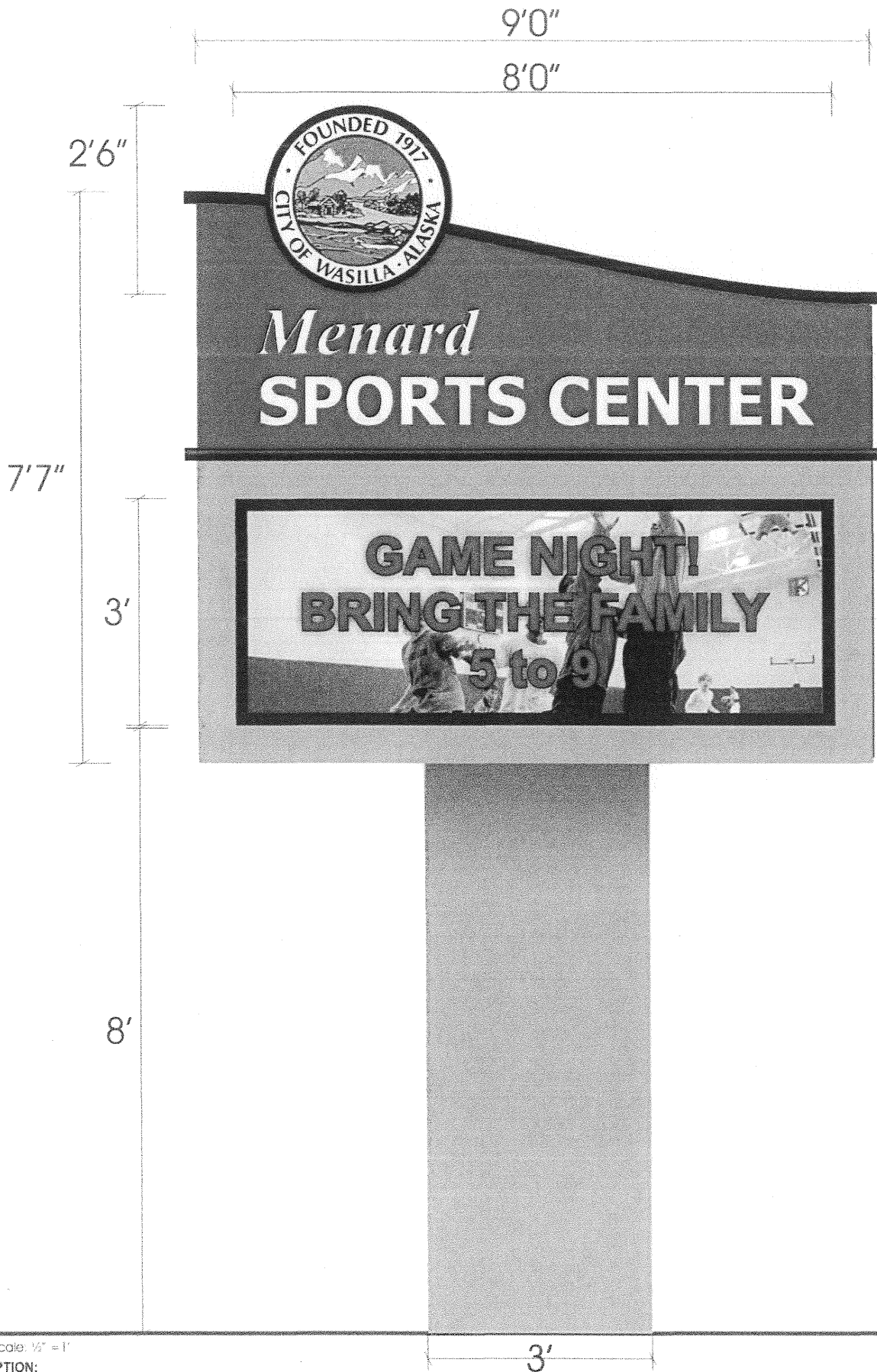
- 3 inch plated, easily replaceable cutting knives
- Suspended pivoting harvesting head which protects against collisions with underwater hazards
- Control bridge with ergonomic seating and excellent operator visibility
- Full instrumentation
- Hydraulic controls
- Bridge mounted power unit for easy maintenance and moisture protection
- Barge bottom abrasion protectors
- Fire extinguisher, lockable battery and tool box
- Painted with a multi-coat, thermally cured, high visibility epoxy/polyester paint for superior corrosion protection



© 2013 Aquamarine. All Rights Reserved.

AQUAMARINE

586 Third Line, Oakville, Ontario, CANADA L6L 4A7
 Phone: (905) 825-1371 • Email: info@aquamarine.ca



IGN 1 scale: 1/2" = 1'

DESCRIPTION:

Illuminated Monument Sign, Cabinet .125" Aluminum Backed with 3/16" White Acrylic, Fluorescent Illumination.
 30" LED Illuminated Channel Cabinet with Black Trim Cap and Sides. Full Color RGB or Single Color Message Center: TBD.

THE DESIGN DEPICTED HEREIN IS THE SOLE PROPERTY OF SIGNCO AND MAY NOT BE REPRODUCED IN WHOLE OR PART WITHOUT WRITTEN PERMISSION OF THAT COMPANY. ACTUAL COLORS MAY VARY SLIGHTLY DUE TO TRANSLUCENCY OF ACRYLIC PLASTICS AND PAINTS.

CLIENT: Wasilla, Menard Sports Center	ADDRESS / SITE: ANCHORAGE / AK	FILE: Z:\M\Menard Sports Center\Wasilla SF Monument Sign.cdr
DESCRIPTION: SF Monument Sign	DESIGN NO.: 001	DATE: 05/20/2013
SCALE: as noted	DESIGNER: A. Binkley	SALES REP: Jasmin Lewis

- APPROVED**
- AS IS
 - WITH CHANGES
 - REQUEST NEW PROOF

SIGNATURE : _____ DATE : _____

CONFORMS TO UL STD 48

SIGNCO
QUALITY SIGNS

2840 COMMERCIAL DR.
ANCHORAGE, ALASKA 99501
PH: 331-7446 FAX: 256-7192

3184917

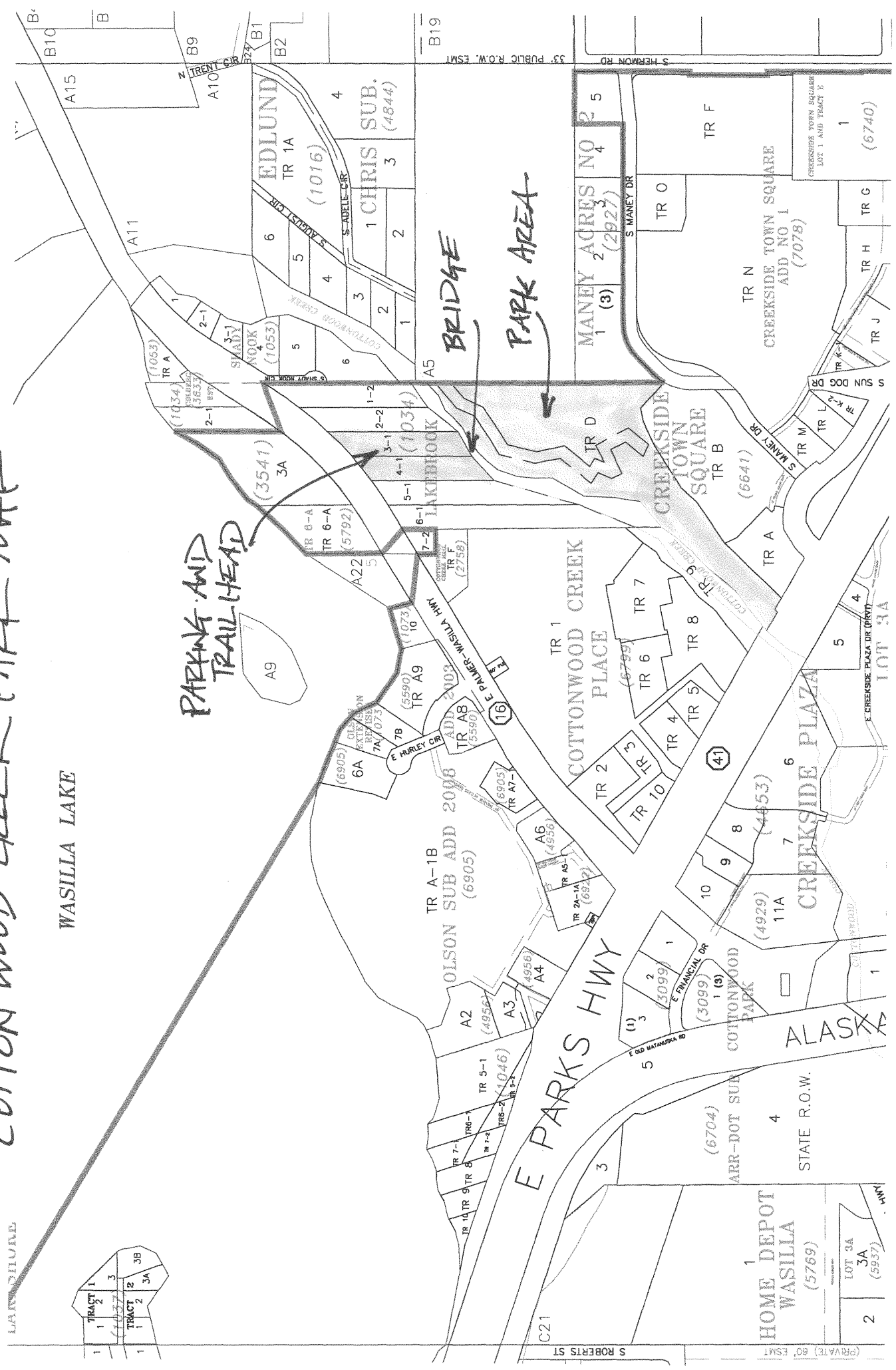


COTTON WOOD CREEK PARK MAP

WASILLA LAKE

PARKING AND TRAIL HEAD

BRIDGE
PARK AREA



TRACT 1	1
TRACT 2	2
TRACT 3	3
TRACT 3A	3A
TRACT 3B	3B

HOME DEPOT WASILLA (5769)	1
LOT 3A 3A (5937)	2