

By: Department of Public Works
Adopted: April 14, 2014
Vote: Buswell, Harris, O'Barr, Sullivan-Leonard, Wall and Wilson in favor

**City of Wasilla
Resolution Serial No. 14-13**

A Resolution of the Wasilla City Council accepting the transfer of the Garden Terrace water system from the Mat-Su Borough.

WHEREAS, the City of Wasilla has been working with the Mat-Su Borough since 2005 to provide water service to the Garden Terrace Subdivision; and

WHEREAS, the City of Wasilla received State and Federal Grants to extend water service to the Garden Terrace Subdivision as their water supply had health risks due to arsenic, corrosiveness, and low flow; and

WHEREAS, the Matanuska-Susitna Borough received a State of Alaska Drinking Water Fund loan to make improvements to the Garden Terrace Subdivision water services to ensure the water system was in a state of good repair for eventually transfer to the City of Wasilla; and

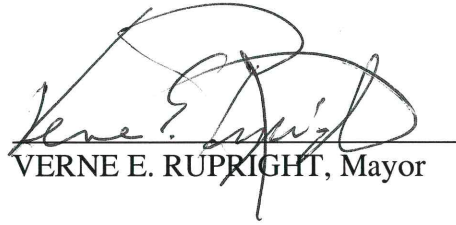
WHEREAS, the Mat-Su Borough has recently transferred title of real property for the City's water control building in this subdivision; and

WHEREAS, the Garden Terrace Subdivision is located within the City of Wasilla water service area as approved by the Regulatory Commission of Alaska.

NOW, THEREFORE, BE IT RESOLVED by the Wasilla City Council that it accepts the transfer of the Garden Terrace Subdivision water system that consists of the water distribution piping located in the rights-of-way and the water services that were improved with the State of Alaska Drinking Water Fund loan.

BE IT FURTHER RESOLVED, by the Wasilla City Council, that the City will continue to charge the Borough directly for water service until such time as the Borough eliminates the mil-rate for water service in this subdivision, the Borough pays the City the payment in lieu of assessment for these properties, and the individual properties sign up for water service to be billed monthly by the City based on metered use.

ADOPTED by the Wasilla City Council on April 14, 2014.



VERNE E. RUPRIGHT, Mayor

ATTEST:



KRISTIE SMITHERS, MMC, City Clerk

[SEAL]

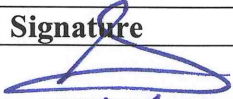
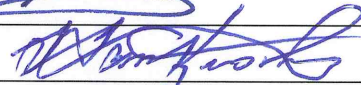

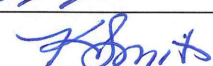
CITY COUNCIL LEGISLATION STAFF REPORT

Resolution Serial No. 14-13: Accepting the transfer of the Garden Terrace water system from the Mat-Su Borough.

Originator: Public Works Director

Date: April 2, 2014

Agenda of: April 14, 2014

Route to:	Department Head	Signature	Date
X	Public Works Director		4/2/14
X	Finance Director		4-2-14
X	Deputy Administrator		4-3-14
X	City Clerk		4/4/14

Reviewed by Mayor Verne E. Rupright: Fiscal Impact: yes

The water fund will receive the distribution piping as a donated asset that will be valued based on the date of installation in 1976. Water revenue is currently being collected from the Mat-Su Borough based on flat rate use that will be changed to metered based use in 2014 from each customer. The change in billing is expected to yield approximately the same revenue. The Borough will pay a payment in lieu of assessment in the amount of \$68,000 as part of the transfer.

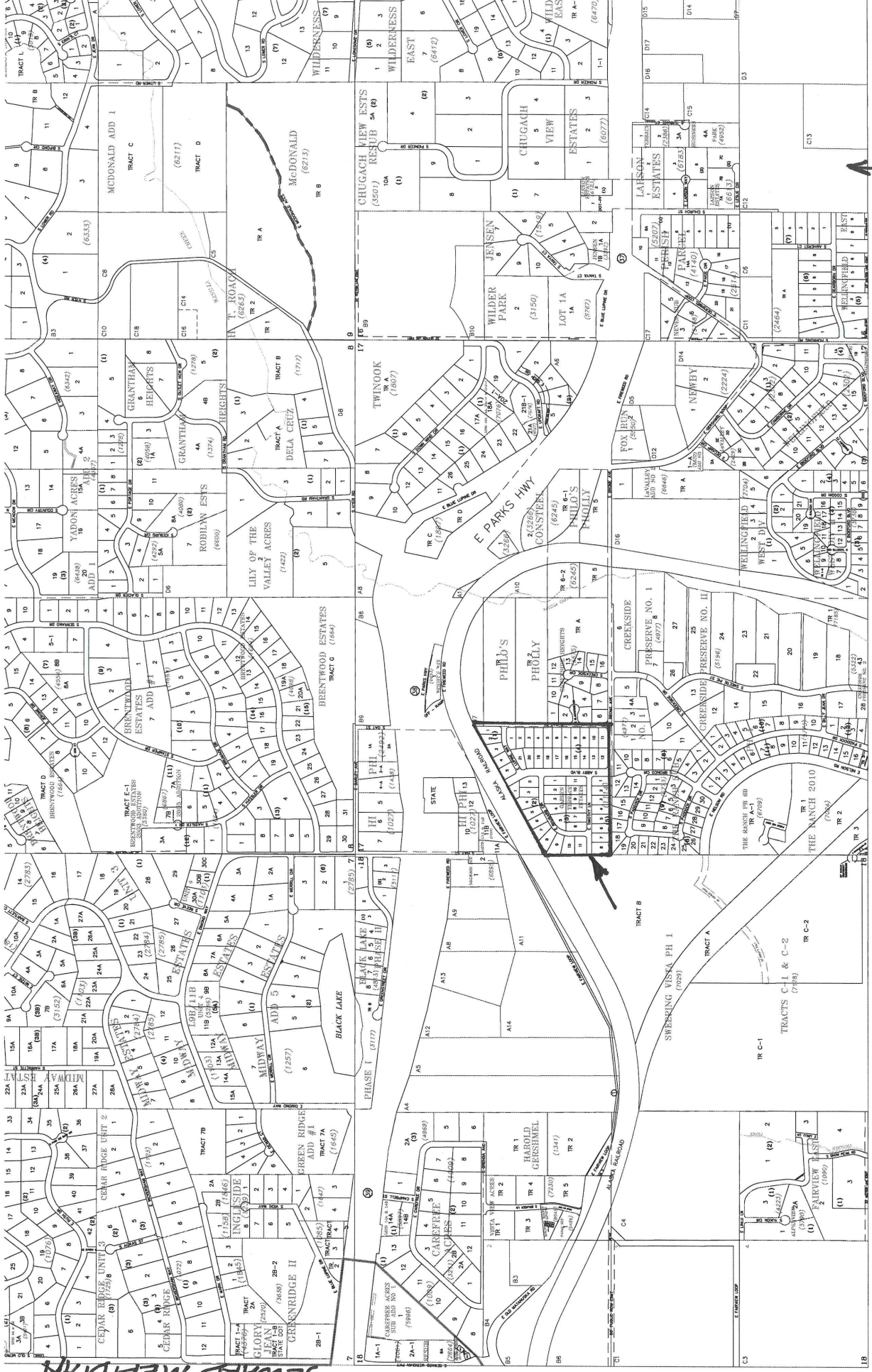
Account name/number: Water Utility Fund/320-4361-436

Attachments: Maps and Diagram (3 pages)

Summary Statement: This resolution authorizes the transfer of the Garden Terrace Subdivision water system from the Mat-Su Borough. The water system was originally constructed in 1976 to serve 50 homes with a community well. Subsequently, the Borough was asked to operate the system and a mil-rate was established to fund the operations. The community well had a long history of water quality problems and eventually the volume in the aquifer could not be sustained and water shortages began to occur.

The City of Wasilla received State and Federal Grants to extend the municipal water supply to this subdivision to ensure safe water could be provided. The Borough also made improvements to the distribution system to ensure the water system is in a good state of repair for eventual transfer to the City. The Borough is now preparing to make the final administrative water system transfer provisions later this year to the City of Wasilla.

Recommended Action: Adopt Resolution Serial No. 14-13.



North

SEE W-15

SEWARD MERIDIAN
SEE W-15

